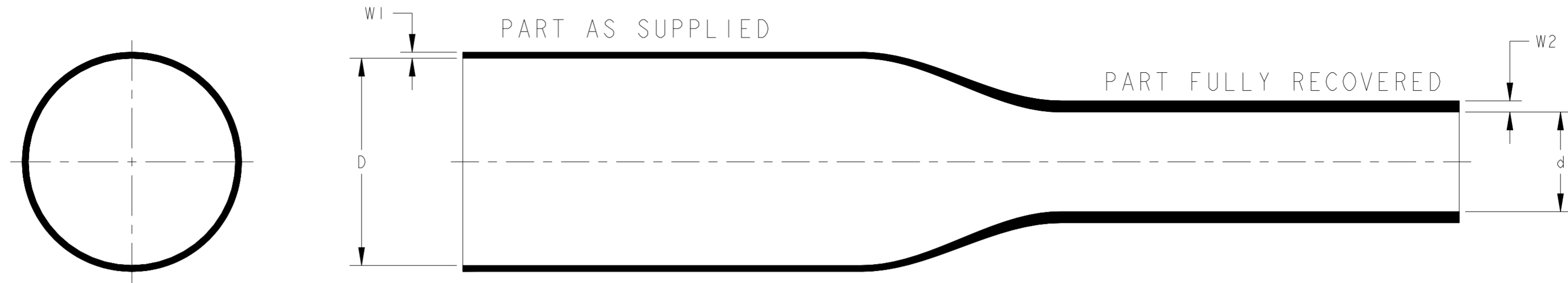


P	LTR	DESCRIPTION	DATE	DWN	APVD
	A	INITIAL RELEASE	14APR2023	BDA	MB

VERSAFIT V2 TUBING POLYOLEFIN, FLEXIBLE, HEAT-SHRINKABLE, FLAME-RETARDANT



PRODUCT DIMENSIONS

SIZE	AS SUPPLIED				AS RECOVERED			
	INSIDE DIAMETER "D"		WALL THICKNESS NOMINAL "W1"		INSIDE DIAMETER MAXIMUM "d"		WALL THICKNESS MINIMUM "W2"	
	mm.	in.	mm.	in.	mm	in.	mm	in.
0.8/0.4	1.20±0.20	0.047±0.008	0.20	0.008	0.40	0.016	0.33	0.013
1.0/0.5	1.50±0.20	0.059±0.008	0.20	0.008	0.50	0.020	0.33	0.013
1.5/0.75	2.10±0.20	0.083±0.008	0.20	0.008	0.75	0.030	0.36	0.014
2.0/1.0	2.60±0.20	0.102±0.008	0.25	0.010	1.00	0.039	0.43	0.017
2.5/1.25	3.10±0.20	0.122±0.008	0.25	0.010	1.25	0.049	0.43	0.017
3.0/1.5	3.60±0.20	0.142±0.008	0.25	0.010	1.50	0.059	0.43	0.017
3.5/1.75	4.10±0.30	0.161±0.012	0.25	0.010	1.75	0.069	0.43	0.017
4.0/2.0	4.60±0.30	0.181±0.012	0.25	0.010	2.00	0.079	0.43	0.017
5.0/2.5	5.60±0.30	0.220±0.012	0.30	0.012	2.50	0.098	0.56	0.022
6.0/3.0	6.60±0.30	0.260±0.012	0.30	0.012	3.00	0.118	0.56	0.022
7.0/3.5	7.60±0.30	0.299±0.012	0.30	0.012	3.50	0.138	0.56	0.022
8.0/4.0	8.60±0.30	0.339±0.012	0.30	0.012	4.00	0.157	0.56	0.022
9.0/4.5	9.60±0.30	0.378±0.012	0.30	0.012	4.50	0.177	0.56	0.022
10.0/5.0	10.40±0.30	0.409±0.012	0.30	0.012	5.00	0.197	0.56	0.022
11.0/5.5	11.40±0.30	0.449±0.012	0.30	0.012	5.50	0.217	0.56	0.022
12.0/6.0	12.70±0.30	0.500±0.012	0.30	0.012	6.00	0.236	0.56	0.022
13.0/6.5	13.50±0.30	0.531±0.012	0.35	0.014	6.50	0.256	0.66	0.026
14.0/7.0	14.40±0.40	0.567±0.016	0.35	0.014	7.00	0.276	0.68	0.027
15.0/7.5	15.70±0.40	0.618±0.016	0.35	0.014	7.50	0.295	0.68	0.027
16.0/8.0	16.90±0.40	0.665±0.016	0.35	0.014	8.00	0.315	0.68	0.027
18.0/9.0	19.00±0.40	0.748±0.016	0.40	0.016	9.00	0.354	0.76	0.030
20.0/10.0	21.40±0.40	0.843±0.016	0.40	0.016	10.00	0.394	0.76	0.030
22.0/11.0	23.20±0.40	0.913±0.016	0.45	0.018	11.00	0.433	0.89	0.035
25.0/12.5	26.80±0.40	1.055±0.016	0.45	0.018	12.50	0.492	0.89	0.035
27.0/12.5	28.20±0.50	1.110±0.020	0.45	0.018	12.50	0.492	0.89	0.035
28.0/14.0	30.00±0.50	1.181±0.020	0.45	0.018	14.00	0.551	0.89	0.035
30.0/15.0	32.10±0.50	1.264±0.020	0.45	0.018	15.00	0.591	0.89	0.035

PRODUCT INFORMATION

SHRINK RATIO-2:1

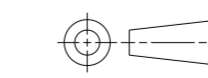
COLOUR: BLACK, WHITE, RED, YELLOW, BLUE, GREEN, BROWN, ORANGE, VIOLET AND GREY.

TUBING CUT TO SPECIFIC LENGTHS CAN BE SUPPLIED FROM THE PRODUCT SIZE REFERENCED WITHIN THIS DRAWING.

STANDARD CUTTING TOLERANCES(mm)	
CUT LENGTH	TOLERANCE
UPTO TO 9.90mm	±1.50mm
10mm TO 24.90mm	±1.50mm
25mm TO 54.90mm	±1.50mm
55mm TO 99.90mm	±3.00mm
100mm TO 149.90mm	±4.00mm
150mm TO 499.90mm	±5.00mm
500mm AND GREATER	±25.40mm

THIS DRAWING IS A CONTROLLED DOCUMENT.

DIMENSIONS:
mm (Inches)



MATERIAL
SEE NOTE

TOLERANCES UNLESS OTHERWISE SPECIFIED:
0 PLC ±-
1 PLC ±0.1
2 PLC ±0.01
3 PLC ±0.001
4 PLC ±0.0001
ANGLES ±-
FINISH -

DWN	23MAR2023
CHK	BASAVARAJA D A
APVD	23MAR2023
APVD	SELVAPANDIAN B
APVD	MAYO BAKARE
PRODUCT SPEC	RW-3023
APPLICATION SPEC	114-120022
WEIGHT	-
CUSTOMER DRAWING	



NAME
VERSAFIT V2 TUBING
POLYOLEFIN, FLEXIBLE, HEAT-SHRINKABLE,
FLAME-RETARDANT

SIZE	CAGE CODE	DRAWING NO	RESTRICTED TO
A2	-	VERSAFIT_V2	-
SCALE	NTS	SHEET	OF
			REV A