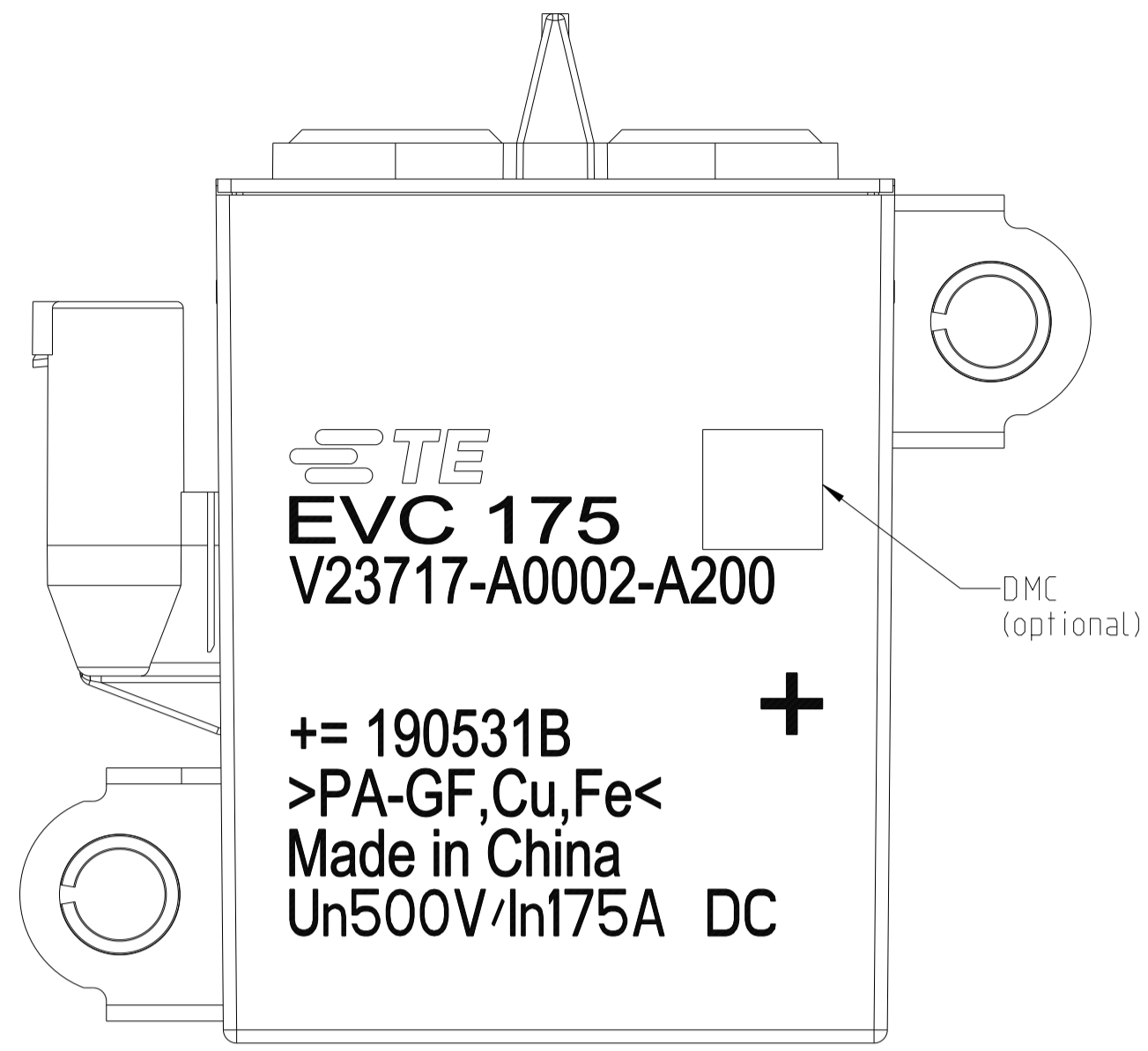
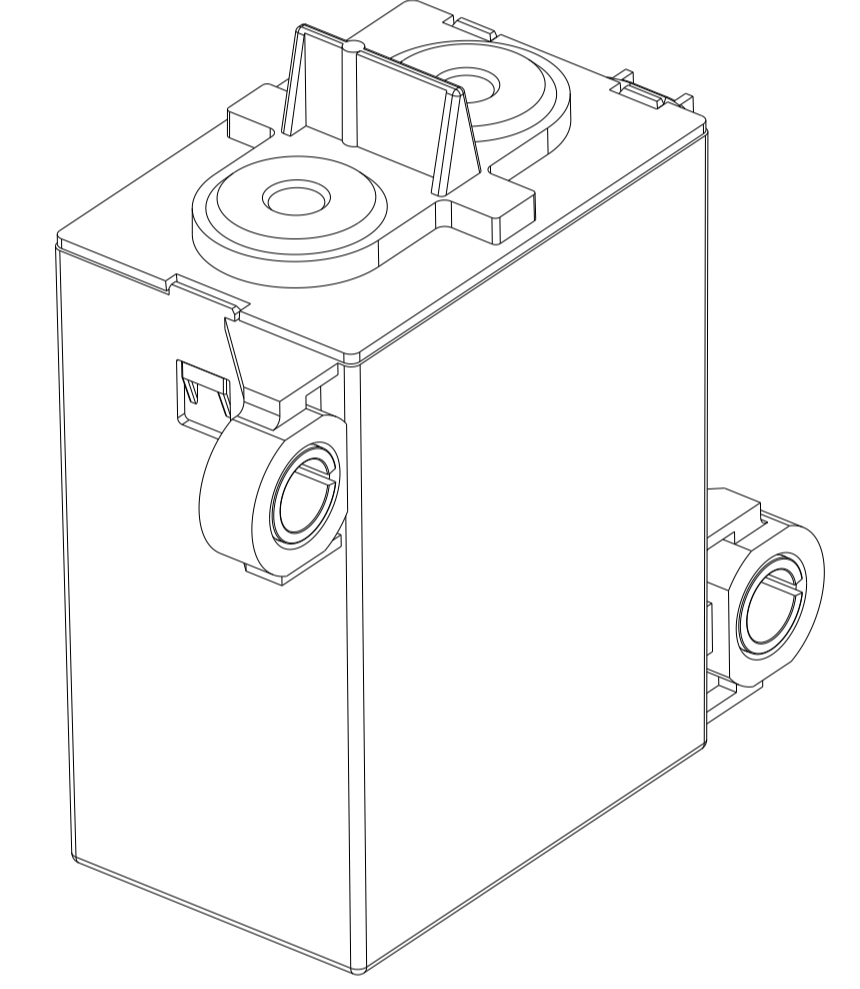
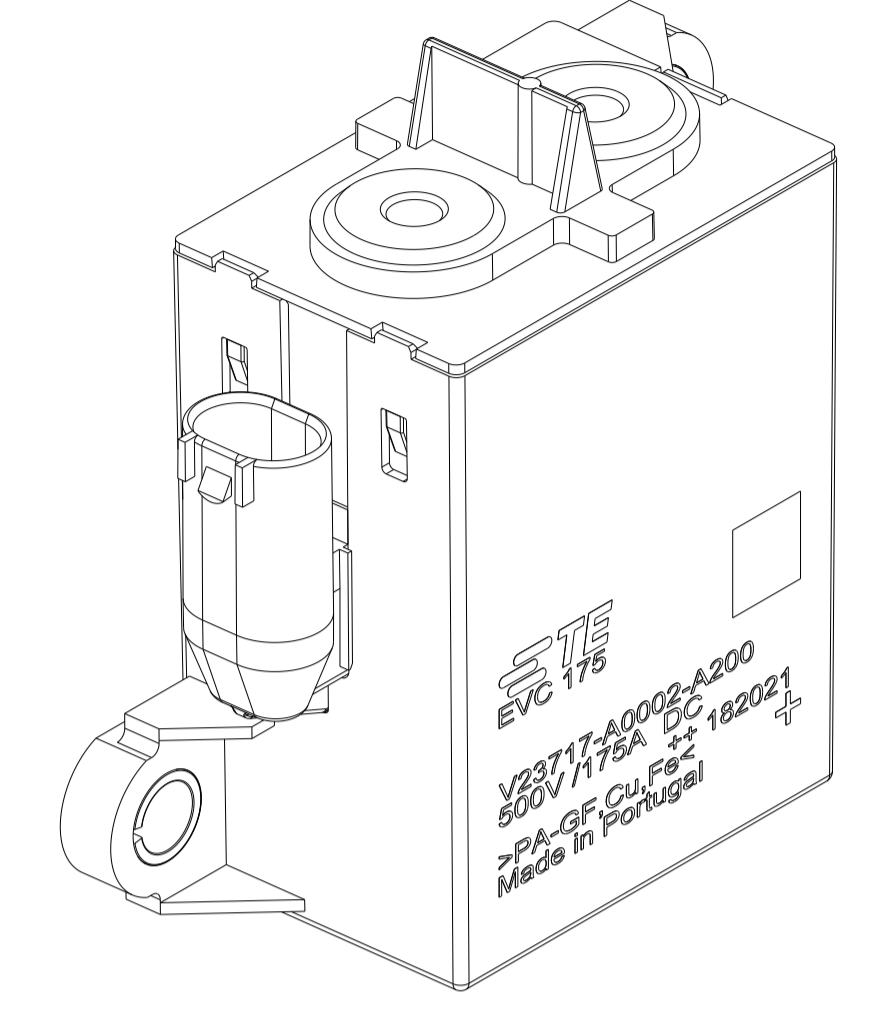
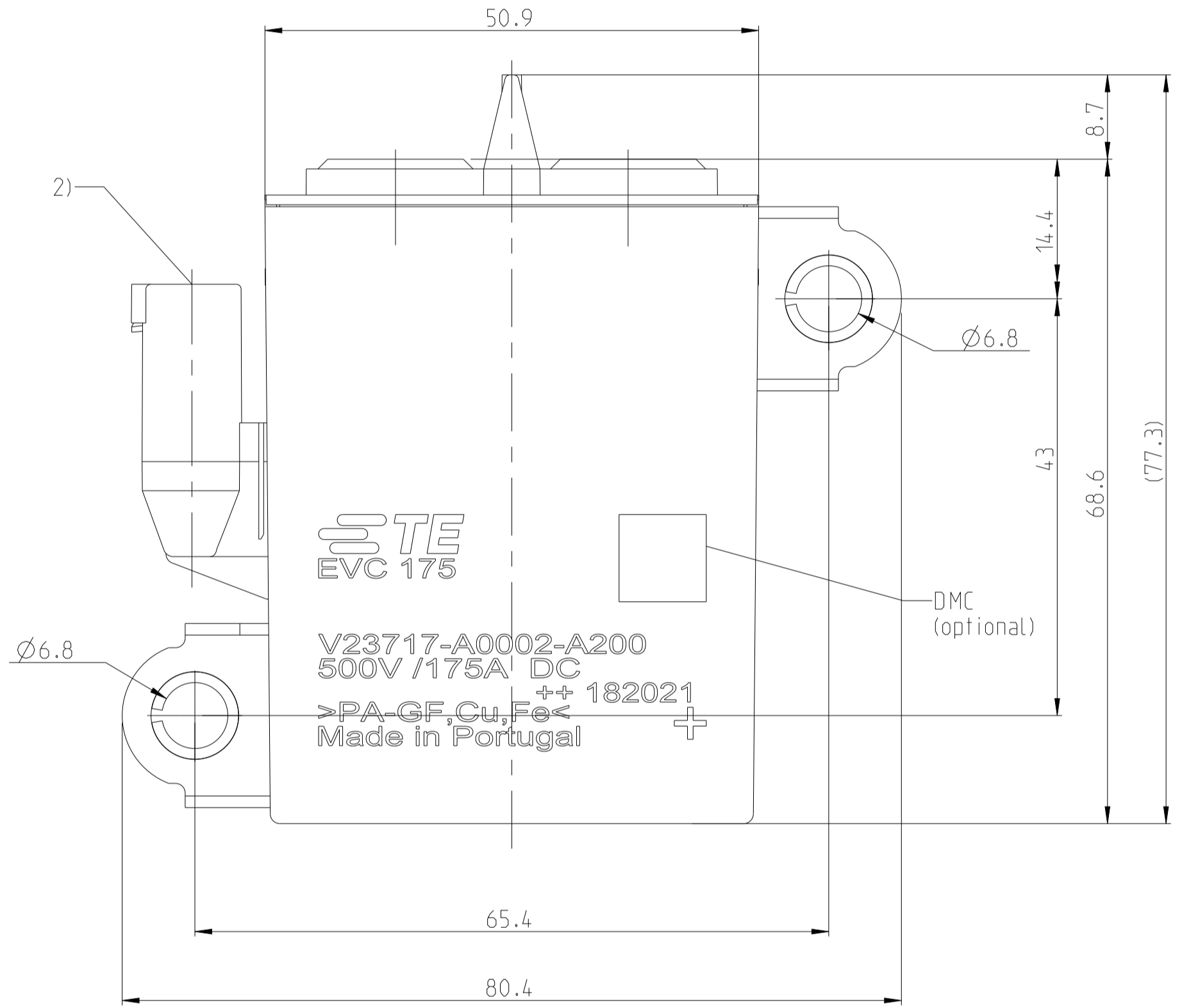
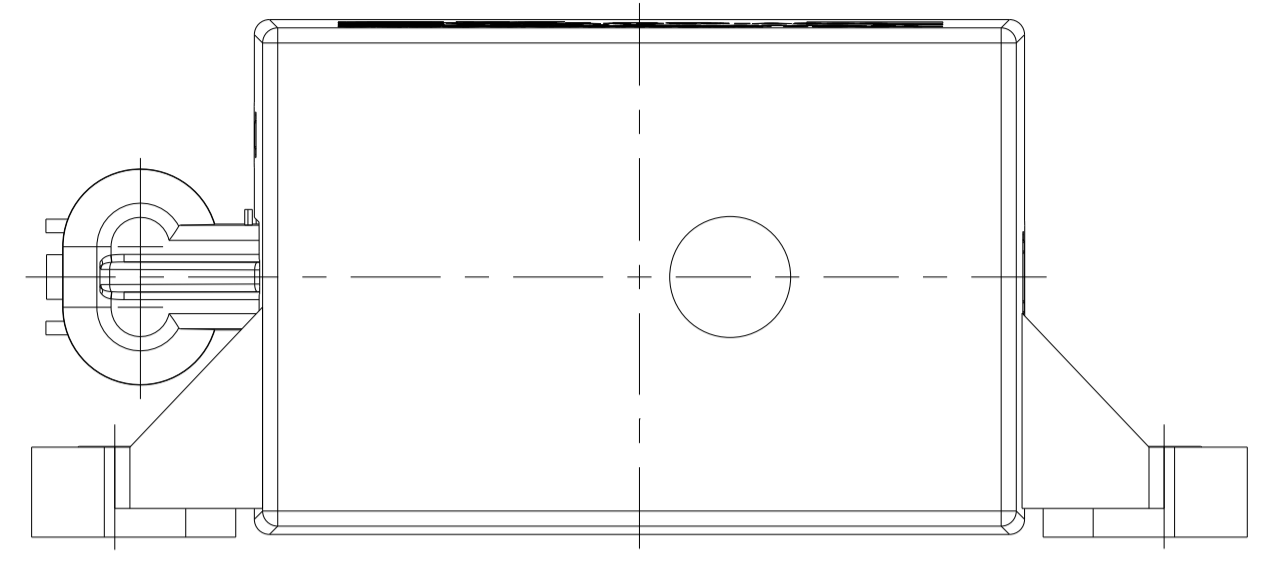
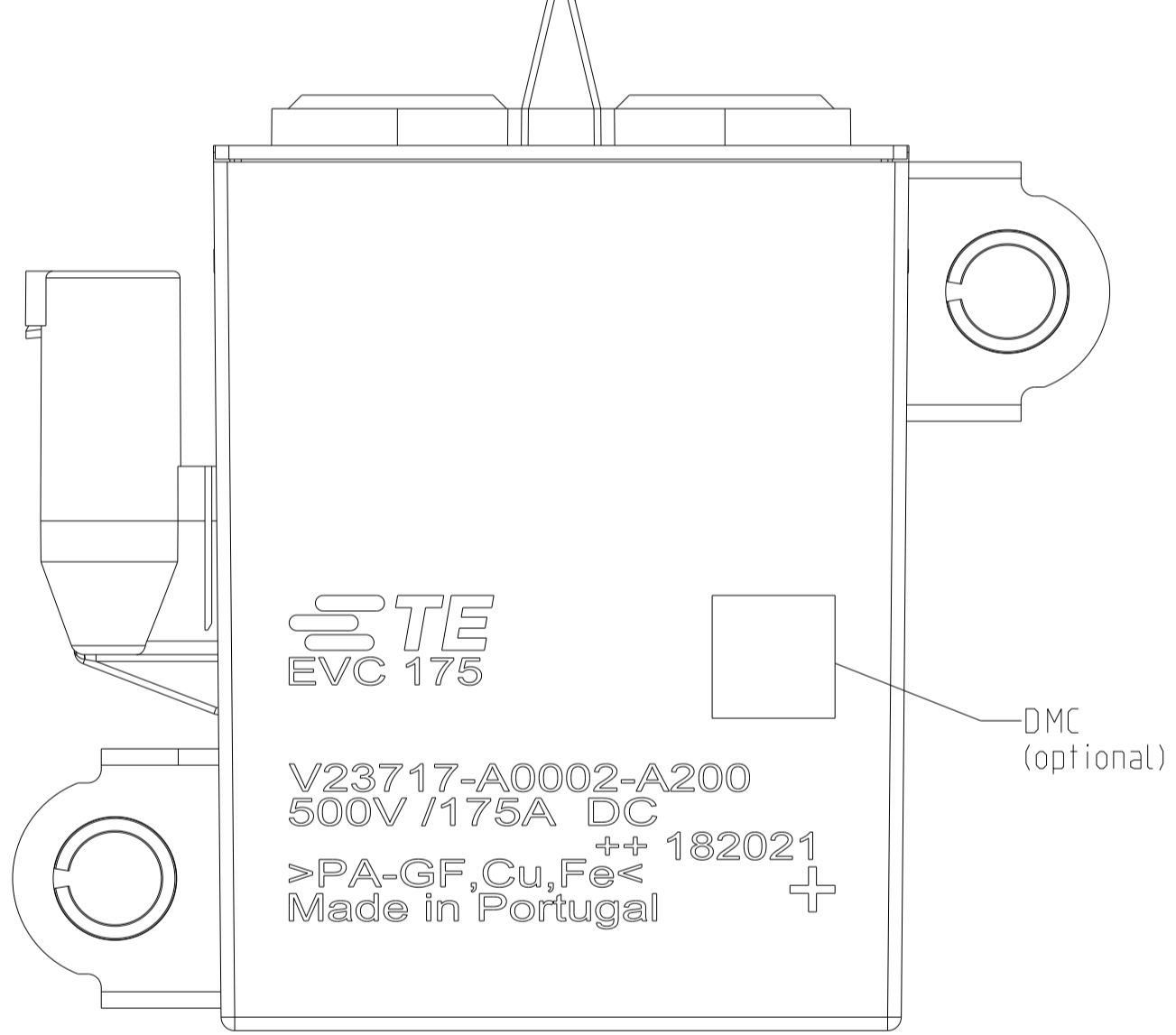


REVISIONS				
P	LTA	DESCRIPTION	DATE	OWN APVD
A2		TCPN-Table	06.JUL.2016	JGAB THAE
B		ECO-19-015478	31.JUL.2019	JGAB THAE
C		ECN-23-197594 for PN	18MAY2023	- -
D		ECN-23-213536	18MAY2023	LAM THAE

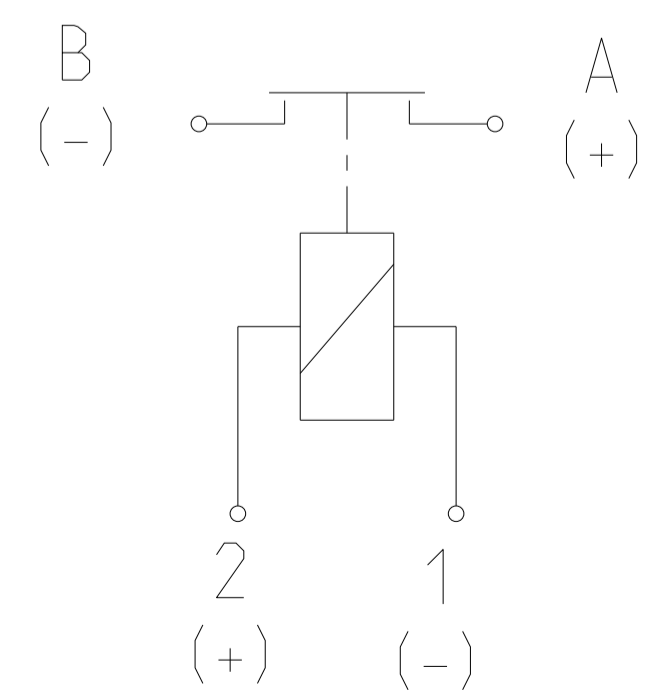
Marking for Standard EVC 175
China Production



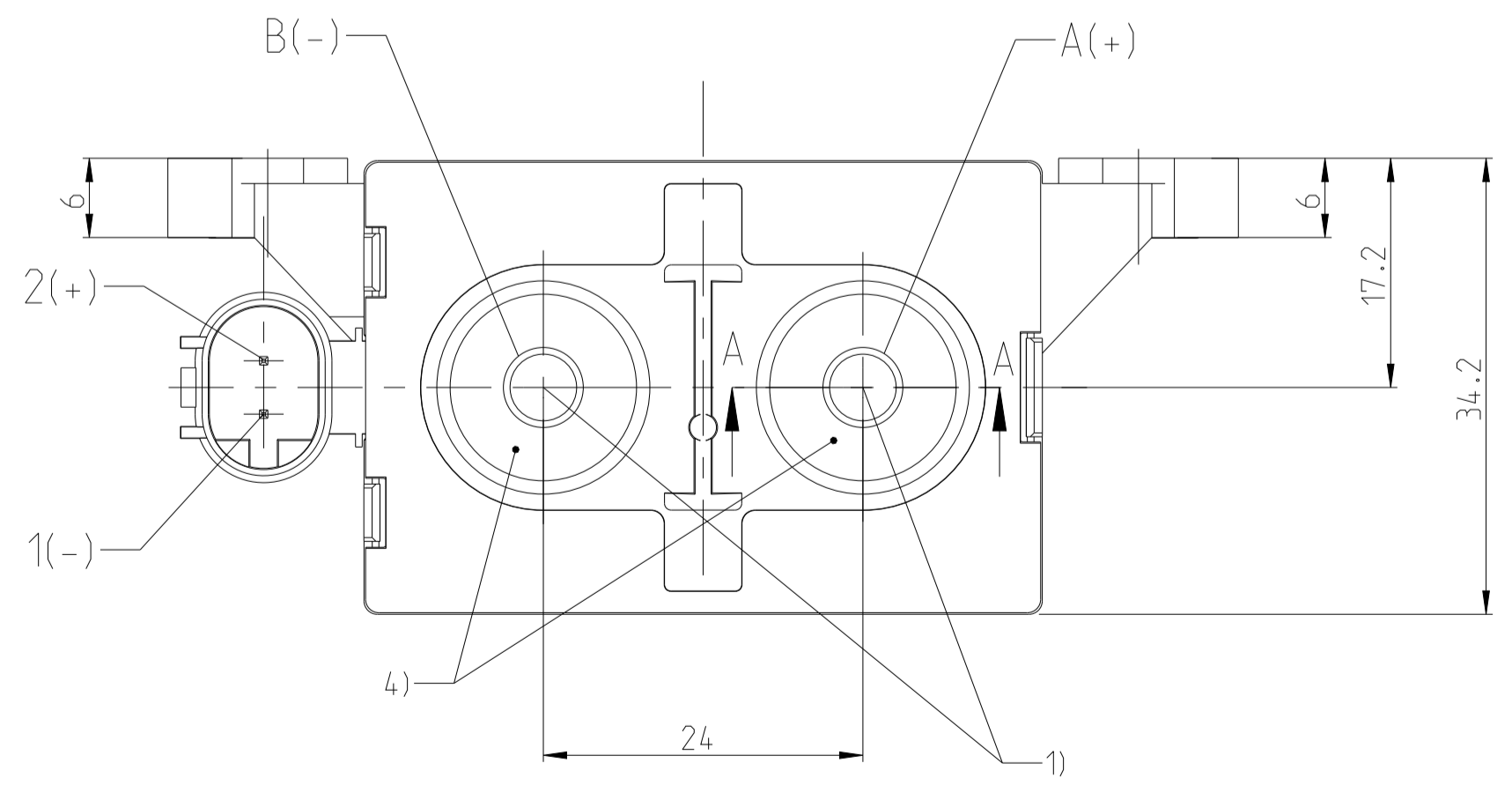
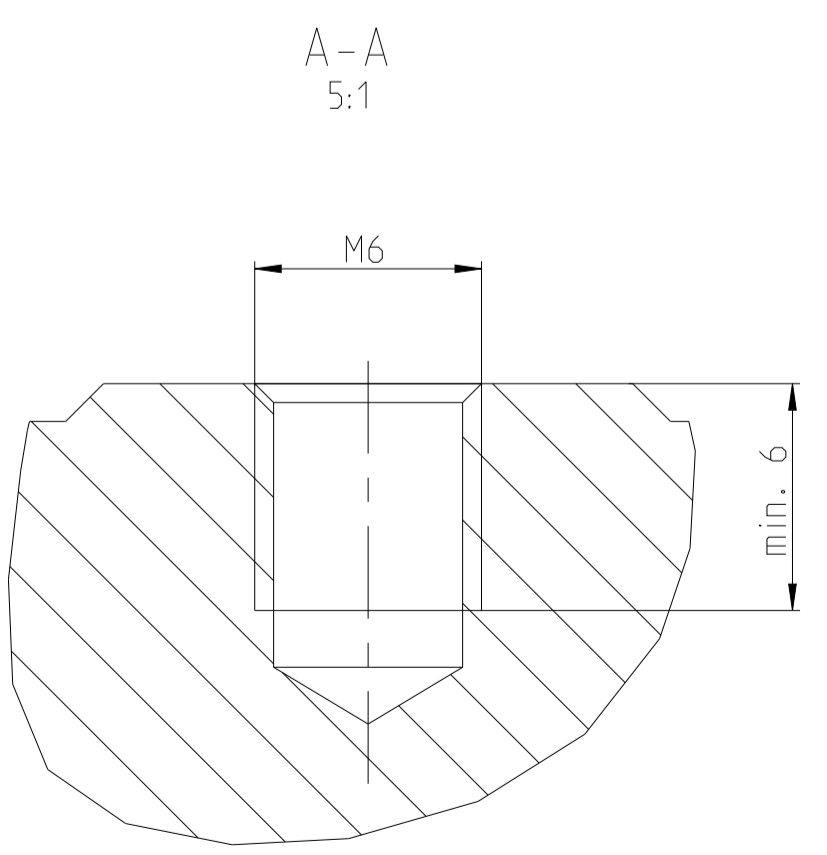
Marking for Standard EVC 175
Protugal Production



Forward load current direction



Applies for Terminal A and B



- Notice:
- 1) Permitted Torque max. 5 Nm
 - 2) Socket Housing
TE Interface 2 Pos. MQS Code A, appropriate for Socket Housing 2 Pos. MQS, TE part no. 1-967644-1
 - 3) Tolerances ISO8015 / ISO2768-cL
 - 4) Sn Plating

China Production	2312311-1	B	V23717-A0002-A200
Portugal Production	2-1904070-1	D	V23717-A0002-A200
Remarks	TCPN	REV	PART ALIAS

THIS DRAWING IS A CONTROLLED DOCUMENT.		OWN: Lido Gabel 16AUG2013	NAME: EVC 175 Internal Economizer	
DIMENSIONS: mm		CHK: Th. Hähnel 21FEB2014	SIZE: A1	
TOLERANCES UNLESS OTHERWISE SPECIFIED:		APVD: A. Koetter 21FEB2014	CAGE CODE: -	
0 PLC	± 0.1	PRODUCT SPEC	DRAWING NO: C=V23717-A0002-A200	
2 PLC	± 0.2	APPLICATION SPEC	RESTRICTED TO: -	
3 PLC	± 0.3	WEIGHT: 295g	SCALE: 2:1	
4 PLC	± 0.4	Customer Drawing	SHEET 1 OF 1	
ANGLES	± 0.5		REV D	
FINISH	-			