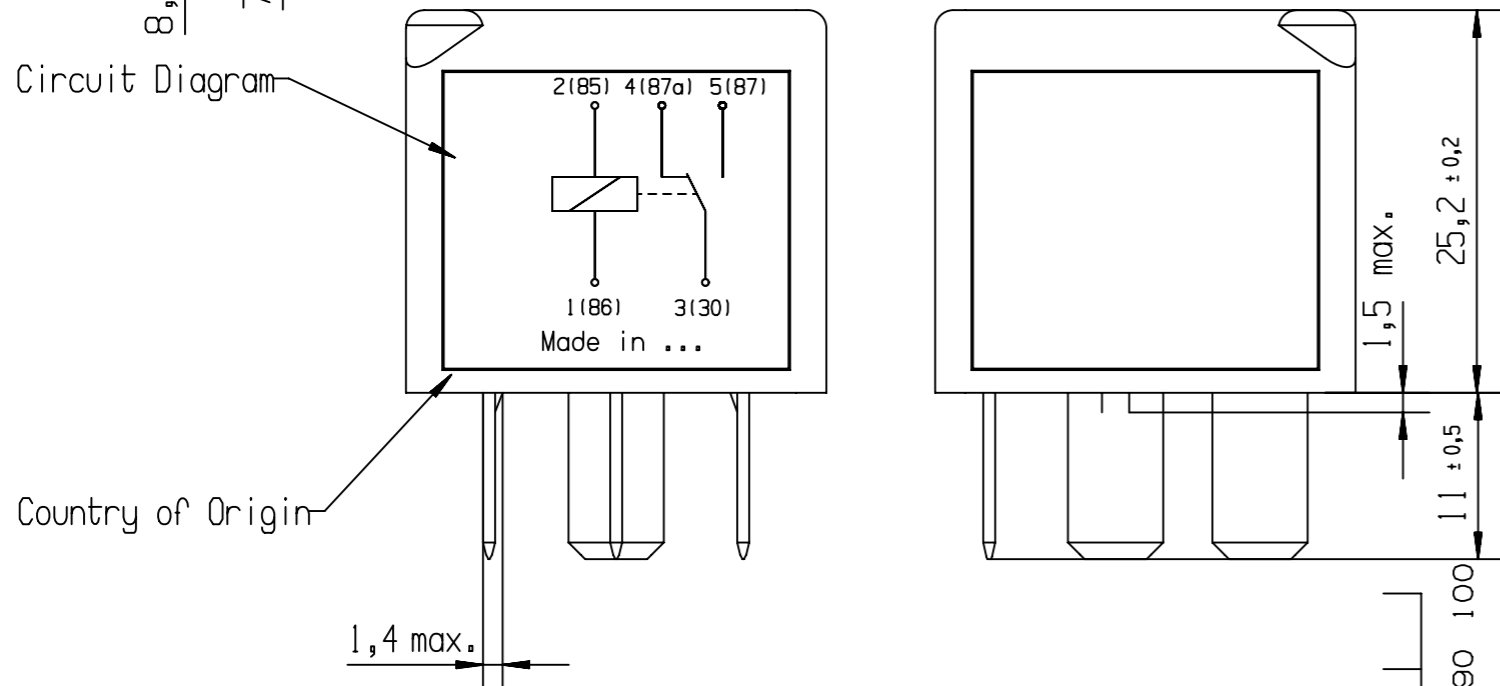
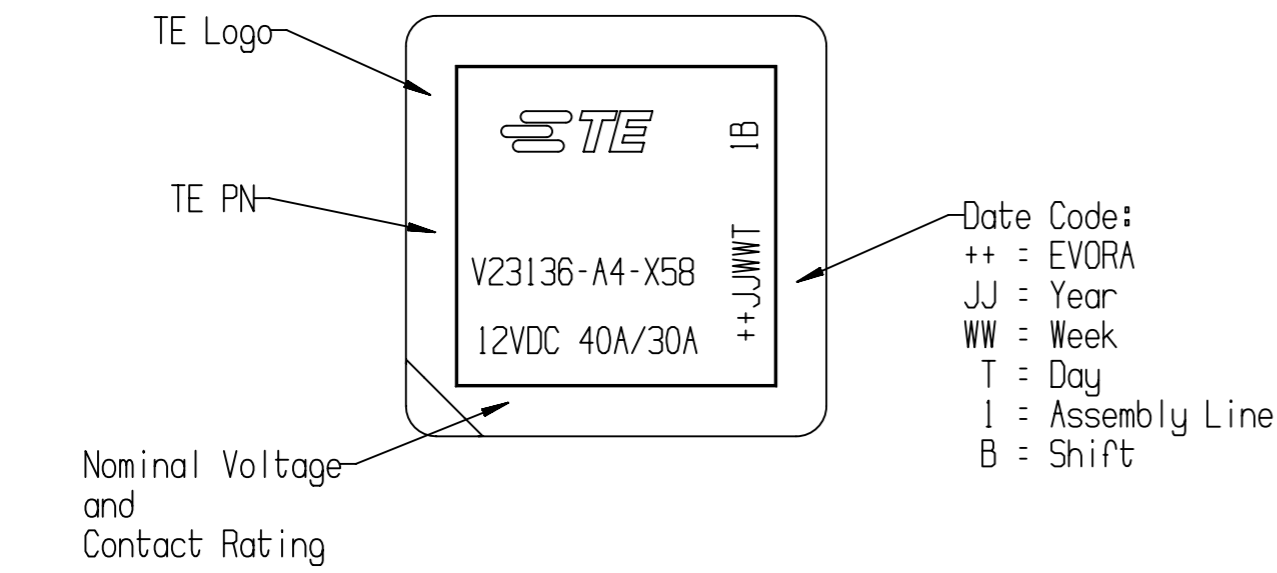


Dustproof:
 Protection class IP 54 to IEC 529 (DIN EN 60529)
 All plug-terminals
 Terminals shape similar to DIN ISO 8092-1
 Coil Terminals 1 and 2: 6.3 x 0.8 mm
 Load Terminals 3, 4 and 5: 6.3 x 0.8 mm



PART	MATERIAL	COLOUR
Cover	PA 66 GF 25	Black sim. to RAL 9005
Base	PA 66 GF 25	Black sim. to RAL 9005
Coil Terminals 1 and 2	SE-Cu 57...58	Pre-tinned Sn 2...6 microns
Load terminals 3, 4 and 5	E-Cu 57...58	Pre-tinned Sn 2...6 microns



Date Code:
 ++ = EVORA
 JJ = Year
 WW = Week
 T = Day
 I = Assembly Line
 B = Shift

PART NUMBER	PART NAME	COUNTRY OF ORIGIN
1-1414686-0	V23136A0004X058-EV-CBOX	Portugal
6-1904112-9	V23136A0004X058-SZ-CBOX	China

PROPRIETARY THE REPRODUCTION, TRANSMISSION OR USE OF THIS DOCUMENT OR IT'S CONTENTS IS NOT PERMITTED WITHOUT EXPRESSED WRITTEN AUTHORITY. OFFENDERS WILL BE LIABLE FOR ALL DAMAGES. ALL RIGHTS, INCLUDING RIGHTS CREATED BY REGISTERED PATENT(S) GRANTED FOR A UTILITY MODEL OR DESIGN, ARE RESERVED.		CHANGES TO THIS DRAWING MUST BE DONE ONLY IN CAD	PAPER SIZE A3
APPLICABLE SPEC.:		FINISH	
TOLERANCE UNLESS SPECIFIED OTHERWISE		DIMENSIONS APPLY PLATING	
DIMENSIONS IN MM		SCALE 1:1; 2:1 WEIGHT	
DATE 2004-11-19 NAME CRUZ		MATERIAL	
APP.		PART NAME Power FA Change Over Relay	
REV.		DWG NO.	
B ECO-19-006975 06MAY2019 HFont LOCATION PE EVORA		V23136-A0004-X058-CD	
A Initial Release 26AUG2015 LSand		SHT. 1 OF 1	
01 WE05/A014 2005-01-14 CRUZ		CUSTOMER DRAWING	
51 Pending AM 2004-11-19 CRUZ		STE connectivity	
REV. CHANGE ORDER DATE APP.		OF 1	