

THIS DRAWING IS UNPUBLISHED.

RELEASED FOR PUBLICATION

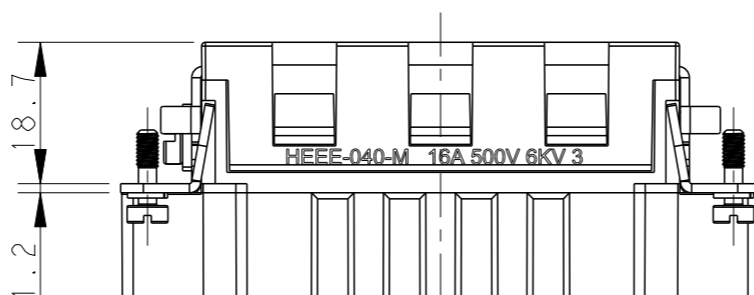
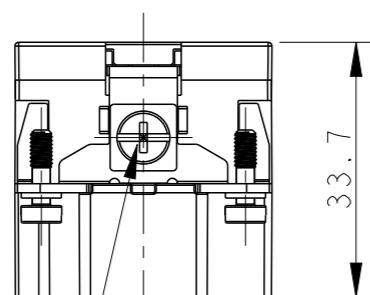
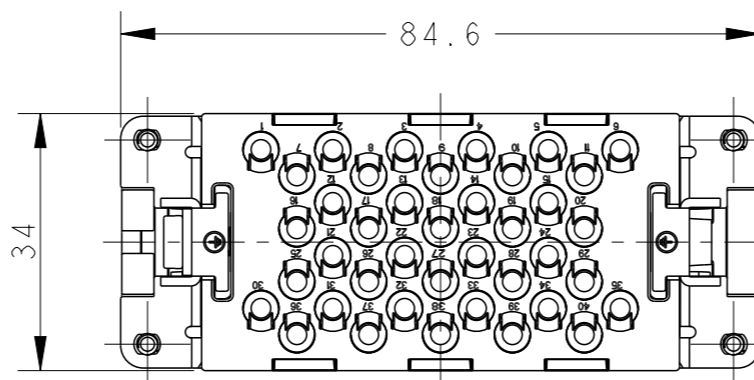
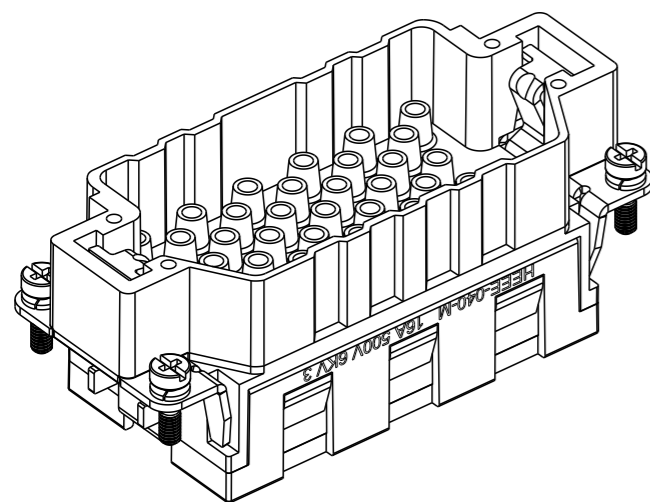
20

© COPYRIGHT 20 BY -

ALL RIGHTS RESERVED.

REVISIONS

P	LTR	DESCRIPTION	DATE	DWN	APVD
	A	INITIAL	05MAR2015	DW	CW
	B	ECR-15-015267	19OCT2015	DW	CW
	B1	ECR-18-010979	21JUL2018	RG	CW
	B2	ECR-19-012251	06SEP2019	WQR	CW



NOTES:

- TECHNICAL CHARACTERISTICS:
 INSULATION MATERIAL: PC
 RATED VOLTAGE: 500V
 RATED CURRENT: 16A
 INSULATION RESISTANCE: $\geq 400M\Omega$
 RATED IMPULSE VOLTAGE: 6KV
 POLLUTION DEGREE: 3
 FLAMMABILITY: UL94V-0
 MATING CYCLES: 500 CYCLES
 WIRE RANGE: 0.14mm²~4mm² (AWG26-AWG12)
 CONTACT TYPE: CRIMP CONTACT
- CONTACTS NEED TO BE ORDERED SEPARATELY.
 (ORDER No. REFER TO DRAWING:T20300X10XX000)

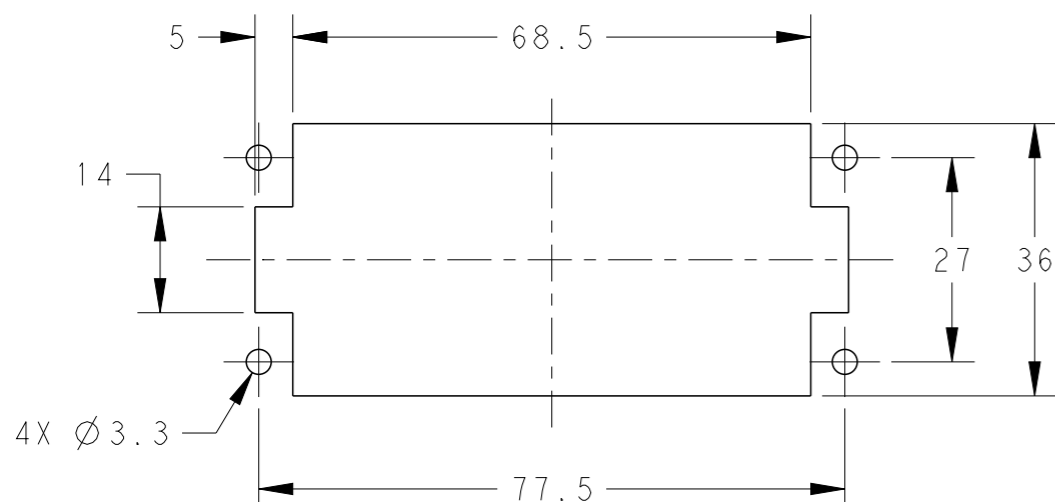
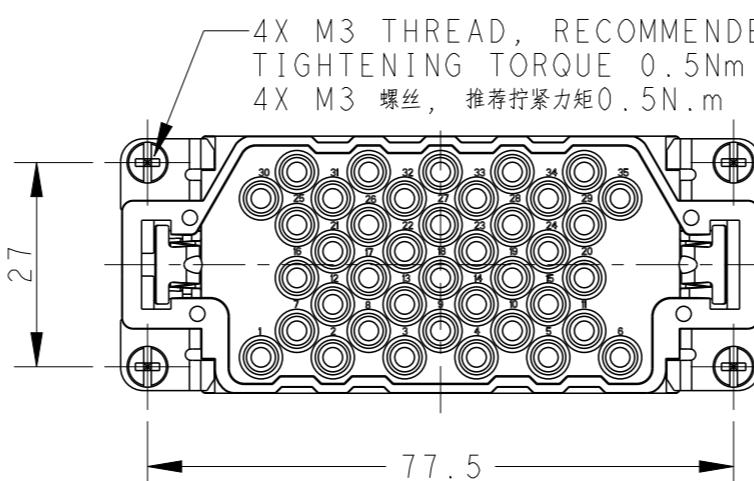
注释:

- 技术参数:
 绝缘材料: PC
 额定电压: 500V
 额定电流: 16A
 绝缘电阻: $\geq 400M\Omega$
 脉冲电压: 6KV
 污染等级: 3
 阻燃等级: UL94V-0
 插拔次数: 500次
 接线范围: 0.14mm²~4mm² (AWG26-AWG12)
 接线类型: 冷压接
- 端子需要单独订购。
 (订货号参考图面: T20300X10XX000)


M4 THREAD
 RECOMMENDED
 TIGHTENING TORQUE 1.2Nm
 M4 螺丝, 推荐拧紧力矩 1.2N.m

4X M3 THREAD, RECOMMENDED
 TIGHTENING TORQUE 0.5Nm
 4X M3 螺丝, 推荐拧紧力矩 0.5N.m

PANEL CUT FOR INSERTS FOR USE
 WITHOUT HOODS/ HOUSINGS
 不使用防护外壳时芯件的安装开孔图



T2059402101-000	HEEE-040-M	HEEE-040 MALE INSERT WITHOUT TE LOGO HEEE-040 公插 无TE LOGO	TYPE 1 类型 1
PART NUMBER 料号	DESCRIPTION 描述		TYPE 类型

THIS DRAWING IS A CONTROLLED DOCUMENT.		DWN 05MAR2015 David Wang	 TE Connectivity		
DIMENSIONS: mm		CHK 05MAR2015 Chris Wang			NAME HEEE-040-M WITHOUT LOGO
TOLERANCES UNLESS OTHERWISE SPECIFIED:		APVD 05MAR2015 Xiang Xu			
0 PLC ±- 1 PLC ±- 2 PLC ±- 3 PLC ±- 4 PLC ±- ANGLES ±- MATERIAL - FINISH -		PRODUCT SPEC 108-137068			SIZE A3
		APPLICATION SPEC 108-137068	CAGE CODE 00779	DRAWING NO T2059402101000	
		WEIGHT -	RESTRICTED TO -		
		CUSTOMER DRAWING	SCALE 1:1	SHEET 1 OF 2	
				REV B2	

4

3

2

1

THIS DRAWING IS UNPUBLISHED.

RELEASED FOR PUBLICATION

20

© COPYRIGHT 20 BY -

ALL RIGHTS RESERVED.

REVISIONS

P	LTR	DESCRIPTION	DATE	DWN	APVD
-	-	SEE SHEET 1	-	-	-

NOTES AND UN-SPECIFIED DIMENSIONS
REFER SHEET 1
注释和未指定的产品尺寸规范参照 SHEET 1

M4 THREAD
RECOMMENDED
TIGHTENING TORQUE 1.2Nm
M4 螺丝, 推荐拧紧力矩 1.2N.m

4X M3 THREAD, RECOMMENDED
TIGHTENING TORQUE 0.5Nm
4X M3 螺丝, 推荐拧紧力矩 0.5N.m

T2059402101-001	HEEE-040-M	HEEE-040 MALE INSERT WITHOUT LOGO HEEE-040 公插 无LOGO	TYPE 2 类型 2
PART NUMBER 料号	DESCRIPTION 描述	TYPE 类型	

THIS DRAWING IS A CONTROLLED DOCUMENT.		DWN 05MAR2015 David Wang												
DIMENSIONS: mm		CHK 05MAR2015 Chris Wang			NAME HEEE-040-M WITHOUT LOGO									
TOLERANCES UNLESS OTHERWISE SPECIFIED:		APVD 05MAR2015 Xiang Xu												
<table border="1"> <tr> <td>0 PLC</td> <td>±-</td> </tr> <tr> <td>1 PLC</td> <td>±-</td> </tr> <tr> <td>2 PLC</td> <td>±-</td> </tr> <tr> <td>3 PLC</td> <td>±-</td> </tr> <tr> <td>4 PLC</td> <td>±-</td> </tr> <tr> <td>ANGLES</td> <td>±-</td> </tr> </table>		0 PLC			±-	1 PLC	±-	2 PLC	±-	3 PLC	±-	4 PLC	±-	ANGLES
0 PLC	±-													
1 PLC	±-													
2 PLC	±-													
3 PLC	±-													
4 PLC	±-													
ANGLES	±-													
MATERIAL	FINISH	APPLICATION SPEC 108-137068	SIZE A3	CAGE CODE 00779	DRAWING NO T2059402101000	RESTRICTED TO -								
CUSTOMER DRAWING			SCALE 1:1	SHEET 2 OF 2	REV B2									

1470-19 (3/13)