

THIS DRAWING IS UNPUBLISHED.

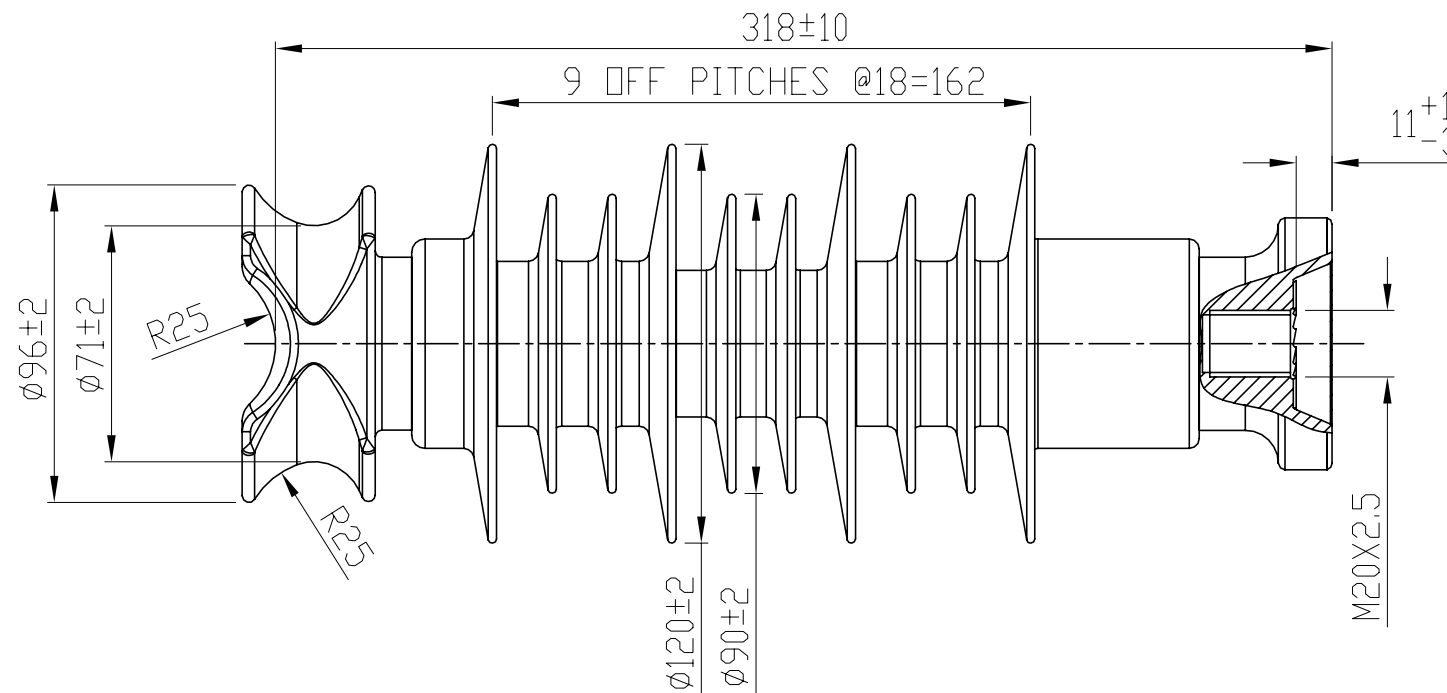
RELEASED FOR PUBLICATION

ALL RIGHTS RESERVED.

© COPYRIGHT - TE Connectivity

REVISIONS

P	LTR	DESCRIPTION	DATE	DWN	APVD
	A	ORIGINAL ISSUE	12MAR2020	RS	KP



PHYSICAL PROPERTIES:

- 1. MINIMUM CREEPAGE DISTANCE : 715 mm
- 2. NOMINAL DRY ARCING DISTANCE : 260 mm

ELECTRICAL PROPERTIES:

- 1. DRY AC WITHSTAND VOLTAGE : 100 kV
- 2. WET AC WITHSTAND VOLTAGE : 80 kV
- 3. DRY AC FLASHOVER VOLTAGE : 110 kV
- 4. WET AC FLASHOVER VOLTAGE : 95 kV
- 5. LIGHTNING IMPULSE WITHSTAND VOLTAGE : 175 kV
- 6. LIGHTNING IMPULSE FLASHOVER VOLTAGE : 190 kV

MECHANICAL PROPERTIES:

- 1. SPECIFIED CANTILEVER LOAD (SCL) : 13 kN
- 2. SPECIFIED TENSILE LOAD (STL) : 25 kN

MATERIALS:

- 1. CORE : ECR FIBERGLASS REINFORCED POLYMER
- 2. HOUSING : SILICONE RUBBER
- 3. END FITTINGS : HOT DIP GALVANIZED STEEL
- 4. STANDARDS : IEC 62217 & IEC 61952

PRODUCT MARKINGS:

- 1. TE LOGO
- 2. SCL 13kN
- 3. YEAR & MONTH
- 4. BATCH NO #

TCPN

EP4106-000

THIS DRAWING IS A CONTROLLED DOCUMENT.		DWN	12MAR2020		 TE Connectivity
		CHK	12MAR2020		
		APVD	12MAR2020		
		PRODUCT SPEC			
DIMENSIONS: Inches[mm]		TOLERANCES UNLESS OTHERWISE SPECIFIED: 0 PLC ± 1 PLC ± 2 PLC ± 3 PLC ± 4 PLC ± ANGLES ±		NAME	
		MATERIAL		CLP-13-FM20-175-0715-0-02	
		FINISH		SIZE CAGE CODE DRAWING NO RESTRICTED TO Approx 3.6 Kg A3 00779 C=INS1697 -	
		CUSTOMER DRAWING		SCALE 1:1 SHEET 1 OF 1 REV A	

NOTES:

- UNSPECIFIED TOLERANCE
- 1) ±(0.04 x d + 1.5)mm WHEN d ≤ 300mm
- 2) ±(0.025 x d + 6)mm WHEN d > 300mm
- WITH MAX. TOLERANCE OF ±50mm