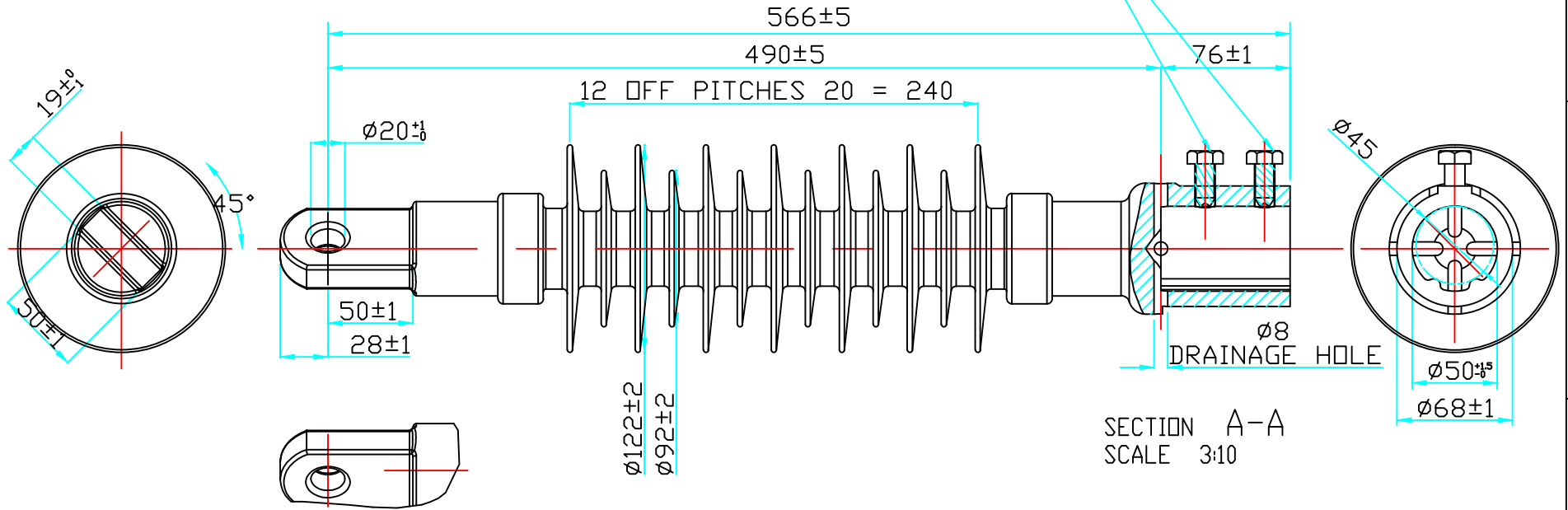


M12 STAINLESS
STEEL BOLTS.
FRICTION MEDIA APPLIED
TO BOLTS BEFORE
ATTACHMENT TO END FITTING.
SUPPLIED WITH BOLTS CLEAR
OF OPENING AS SHOWN.



ELECTRICAL PROPERTIES

DRY AC FLASHOVER :145 kV
WET AC FLASHOVER :124 kV
DRY AC WITHSTAND :125 kV
WET AC WITHSTAND :103 kV
IMPULSE WITHSTAND VOLTAGE :237 kV

MECHANICAL PROPERTIES

SCL :10.57 kN / 4.3kNm.
SCL :MIN. FAIL LOAD: 13.2kN/5.4kNm
MDCL :6.855kN / 2.79kNm.
STL :NONE
SML :90 KN
MDToL: NONE
SCoL: NONE

PHYSICAL PROPERTIES

NOMINAL CREEPAGE : 1072 MM
NOMINAL DRY ARC : 339 MM
END FITTING DESIGN : CUSTOMER REQUEST.
TOP TO SUIT TUBE Ø42MM

MATERIAL

END FITTING :CAST IRON GALVANISED
HOUSING :RAYCHEM HV RED (EVA)
CORE :RBGF, ECR GLASS

TRV ART NR 04 21 036

MARKING ON MOULDED HOUSING:

1. RAYCHEM
2. DATE CLOCKS

MARKING ON END FITTING:

1. YYWW

SHEET 1 OF 1					INTERNATIONAL SCIENCE CENTRE, NAT. TECH. PARK, CASTLETROY, CO. LIMERICK, IRELAND	
SCD					Raychem Insulator	
DRN	D MITCHELL	10/06		TOLERANCES UNLESS OTHERWISE SPECIFIED: 0 PLC ± 1 1 PLC ± 0.1 2 PLC ± 0.01 3 PLC ± 0.001 4 PLC ± 0.0001 ANGLES ± 1°	THIS DRAWING AND THE INFORMATION SET FORTH HEREIN ARE THE PROPERTY OF TE CONNECTIVITY AND ARE TO BE HELD IN TRUST AND CONFIDENCE. PUBLICATION, DUPLICATION, DISCLOSURE OR USE FOR ANY OTHER PURPOSE NOT EXPRESSLY AUTHORISED IN WRITING BY TE CONNECTIVITY LTD IS PROHIBITED.	TITLE RRA-43R-PTG-566-42
CHECK	J MULLEN	10/06				
APP	J TOTEV	10/06				
SCALE	NTS					
PCN	CB8082-000	DRG NO	INS0749	REV	8	

DOCUMENT REVISION CONTROL

REVISION	DATE	ECO #	REQUESTED BY	CHANGE DETAILS	SIGN
1	10/06	-	-	ORIGINAL ISSUE LG 2151	DM
2	10/06	-	-	DATE DIALS LG 2230	DM
3	11/06	-	-	END FIT TOL LG 2267	DM
4	09/10	-	-	TECH NOTES UPDATED	HMF
5	02/12	-	JM	OVERALL WORKING LENGTH ADDED (SECTION D2), Ø50 TOLERANCE UPDATED TO CONFORM WITH END FITTING TOLERANCE (SECTION C1), MARKING DETAILS MOVED TO A4.	JH
6	03/12	-	BMG	MAX ALLOWABLE DIAMETER (CLAMPING DIAMETER) FOR PIPE END FITTING ADDED TO DRAWING (SECTION C1)	
7	04/15	ECO-15-00 5158	TB	ADDRESS UPDATED ON TEMPLATE	SH
8	04/15	ECO-15-00 6070	TB	TRV NOTE UPDATED, MATERIAL NOTE UPDATED	SH

D

C

B

A

CB8082-000

RRA-43R-PTG-556-42

INS0749

SCD



4

3

2

1