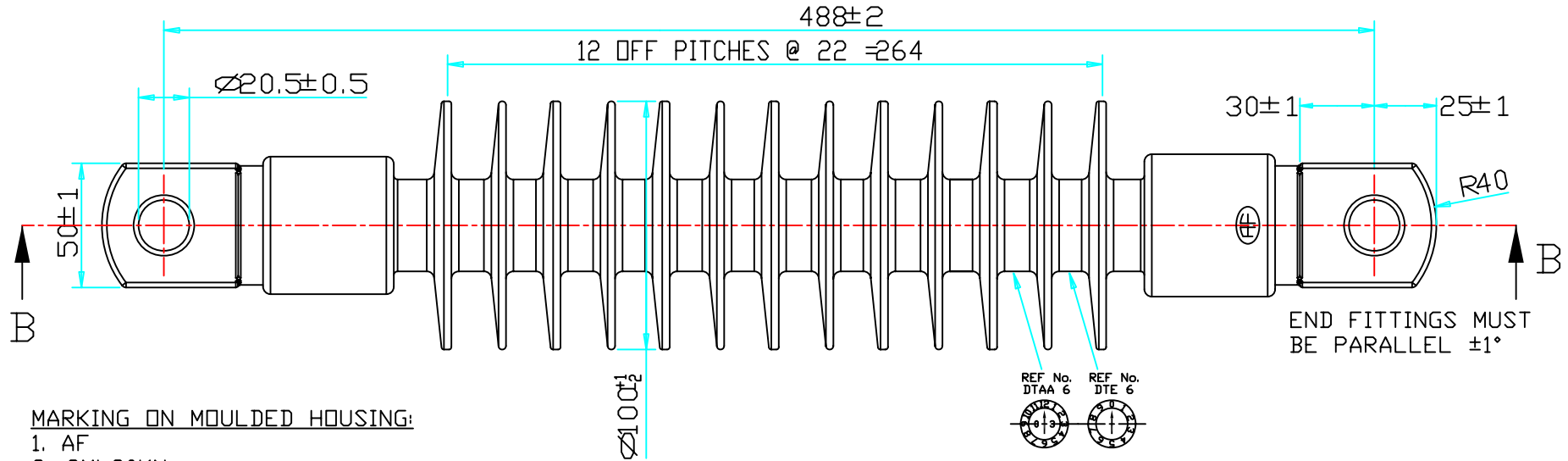


SCD



MARKING ON MOULDED HOUSING:

1. AF
2. SML80KN
3. RAYCHEM
4. DATE CLOCKS

ELECTRICAL PROPERTIES

DRY AC FLASHOVER	:153 kV
WET AC FLASHOVER	:95 kV
DRY AC WITHSTAND	:133 kV
WET AC WITHSTAND	:80 kV
IMPULSE WITHSTAND VOLTAGE	:237 kV

MECHANICAL PROPERTIES

SCL	:NONE
MDCL	:NONE
STL	:NONE
SML	:80kN
SToL	:NONE
SCoL	:TBC
RTL	:40kN

PHYSICAL PROPERTIES

NOMINAL CREEPAGE	:1160 MM
NOMINAL DRY ARC	:408 MM
END FITTING DESIGN	:CUSTOMER REQUEST

MATERIAL

END FITTING	:ALUMINIUM 6082-T6
HOUSING	:RAYCHEM HV RED (EVA)
CORE	:RGBF

REV	DATE	SIGN	MODIFICATION	APP
1	5/06	DM	ORIG ISS LG 1823	
2	08/09	HMF	TRIMMED SHEDS ROUNDED	



ENERGY DIVISION



RAYCHEM SHANNON
BAY 100-109
SHANNON IND. EST.
SHANNON
CO. CLARE
IRELAND

THIS DRAWING AND THE INFORMATION SET FORTH
HEREIN ARE THE PROPERTY OF TYCO ELECTRONICS
AND ARE TO BE HELD IN TRUST AND
CONFIDENCE. PUBLICATION, DUPLICATION,
DISCLOSURE OR USE FOR ANY OTHER PURPOSE NOT
EXPRESSLY AUTHORISED IN WRITING BY
TYCO ELECTRONICS IS PROHIBITED.

DRN	D MITCHELL	05/06
CHECK	J MULLEN	05/06
APP	J TOTEV	05/06
PCN	CA7391-000	

TITLE	
RRA-46R-TTA-488	
DRG NO	INS0719
SHEET	OF 1