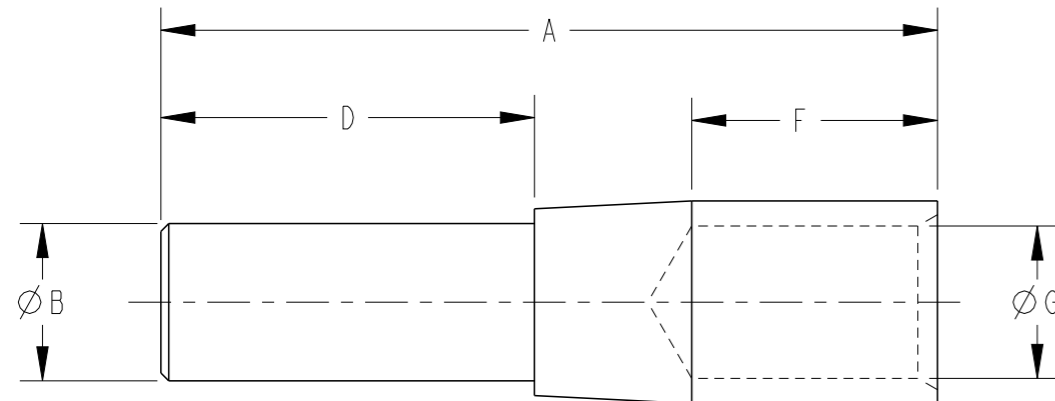


REVISIONS

P	LTR	DESCRIPTION	DATE	DWN	APVD
	A	INITIAL RELEASE	03DEC2020	RS	MF



TYPE CSI

TYPE CSI PRODUCT SELECTION INFORMATION

TCPN	CATALOGUE NUMBER	CONDUCTOR AREA (mm <sup>2</sup> )	STRANDING METRIC	DIMENSIONS (mm)					CRIMPING DIE
				A	B	D	F	G	
ED9713-000	CSI-16-6	16	7/1.60	52	6	22	22	5.5	38-63CU
ED9714-000	CSI-25-6	25	7/1.60	52	6	22	22	7.1	38-77CU
ED9715-000	CSI-35-6	35	19/1.53	70	6	34	34	8.4	38-92CU
617798-000	CSI-50-8	50	19/1.78	70	8	34	25	9.5	38-104CU
ED9716-000	CSI-70-8	70	19/2.14	70	8	34	25	11	38-115CU
004656-000	CSI-70-10	70	19/2.14	70	10	34	25	11	38-115CU
ED9717-000	CSI-70-12	70	19/2.14	70	12	38	25	11	38-115CU
462862-000	CSI-72-12.6X05	2X35.8	NA	145	12.6	85	50	13.4	38-142CU, 40-142CU
324360-000	CSI-95-10	95	37/1.78	70	10	34	25	13.4	38-142CU, 40-142CU
ED9718-000	CSI-95-12	95	37/1.78	70	12	38	25	13.4	38-142CU, 40-142CU
CV3043-000	CSI-120-12	120	37/2.03	86	12	38	38	15.5	38-165CU, 40-165CU
797750-000	CSI-120-16	120	37/2.03	86	16	38	38	15.5	38-165CU, 40-165CU
CY8866-000	CSI-127-15.7	127	NA	155	15.7	115	36	16	38-173CU
ED9719-000	CSI-150-10	150	37/2.25	82	10	34	38	16.3	38-165CU, 40-165CU
970986-000	CSI-150-16	150	37/2.25	86	16	38	38	16.3	38-183CU, 40-183CU
ED9721-000	CSI-185-10	185	37/2.52	82	10	34	38	18.4	38-200CU, 40-200CU
313146-000	CSI-185-12	185	37/2.52	86	12	38	38	18.4	38-200CU, 40-200CU
E83473-000	CSI-185-15.25	185	37/2.52	230	15.25	149	69	18.25	38-200CU, 40-200CU
290102-000	CSI-185-16	185	37/2.52	86	16	38	38	18.4	38-200CU, 40-200CU
E60379-000	CSI-240-15.25	240	61/2.25	235	15.25	149	74	21	38-231CU, 40-231CU
ED9722-000	CSI-240-16	240	61/2.25	98	16	50	38	21	38-231CU, 40-231CU
ED9723-000	CSI-240-18	240	61/2.25	98	18	50	38	21	38-231CU, 40-231CU
377056-000	CSI-300-15.25	300	NA	235	15.25	149	74	23.81	38-260CU, 40-260CU

THIS DRAWING IS A CONTROLLED DOCUMENT.

DWN RAVI.S 03DEC2020

CHK S.CHAD 03DEC2020

APVD M.FRATER 03DEC2020

PRODUCT SPEC

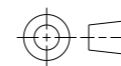
APPLICATION SPEC

WEIGHT -

CUSTOMER DRAWING

DIMENSIONS:

mm



TOLERANCES UNLESS OTHERWISE SPECIFIED:

- 0 PLC ±-
- 1 PLC ±-
- 2 PLC ±-
- 3 PLC ±-
- 4 PLC ±-
- ANGLES ±-
- FINISH -

MATERIAL -

FINISH -



TE Connectivity

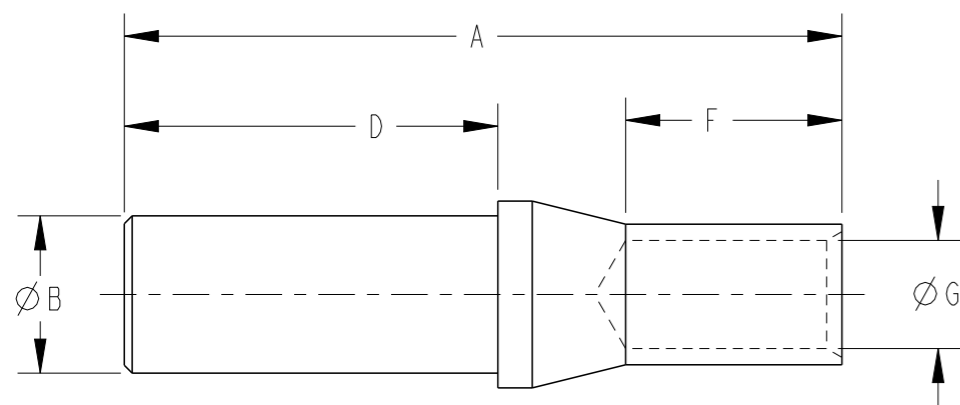
NAME COPPER STALK CRIMP LUGS

SIZE A3 CAGE CODE 00779 DRAWING NO G-E00001147 RESTRICTED TO -

SCALE NTS SHEET 1 OF 2 REV A

REVISIONS


P	LTR	DESCRIPTION	DATE	DWN	APVD
-	-	SEE SHEET 1	-	-	-



TYPE CS2

TYPE CS2 PRODUCT SELECTION INFORMATION

TCPN	CATALOGUE NUMBER	CONDUCTOR AREA (mm <sup>2</sup> )	STRANDING METRIC	DIMENSIONS (mm)					CRIMPING DIE
				A	B	D	F	G	
ED9724-000	CS2-10-6	10	7/1.35	52	6	22	22	4.7	38-57CU
861082-000	CS2-16-8	16	7/1.70	52	8	22	22	5.5	38-63CU
097400-000	CS2-16-10	16	7/1.70	67	10	34	22	5.5	38-63CU
ED9725-000	CS2-16-12	16	7/1.70	67	12	34	22	5.5	38-63CU
ED9726-000	CS2-25-8	25	7/2.14-19/1.3	52	8	22	22	7.1	38-77CU
829536-000	CS2-35-10	35	19/1.53	70	10	34	22	8.4	38-92CU
170792-000	CS2-35-12	35	19/1.53	70	12	34	22	8.4	38-92CU
ED9728-000	CS2-50-12	50	19/1.78	70	12	34	22	9.5	38-104CU
215990-000	CS2-50-16	50	19/1.78	73	16	38	22	9.5	38-104CU
416746-000	CS2-70-16	70	19/2.14	73	16	38	22	11.0	38-115CU
761084-000	CS2-95-16	95	37/1.78	70	16	34	22	13.4	38-142CU

THIS DRAWING IS A CONTROLLED DOCUMENT.		DWN RAVI.S 03DEC2020	 TE Connectivity	
DIMENSIONS: mm		CHK S.CHAD 03DEC2020		
TOLERANCES UNLESS OTHERWISE SPECIFIED:		APVD M.FRATER 03DEC2020	NAME COPPER STALK CRIMP LUGS	
0 PLC ±- 1 PLC ±- 2 PLC ±- 3 PLC ±- 4 PLC ±- ANGLES ±-		PRODUCT SPEC -	RESTRICTED TO -	
MATERIAL -		FINISH -	APPLICATION SPEC -	WEIGHT -
		SIZE A3	CAGE CODE 00779	DRAWING NO C-E00001147
		CUSTOMER DRAWING		SCALE NTS
		SHEET 2 OF 2		REV A