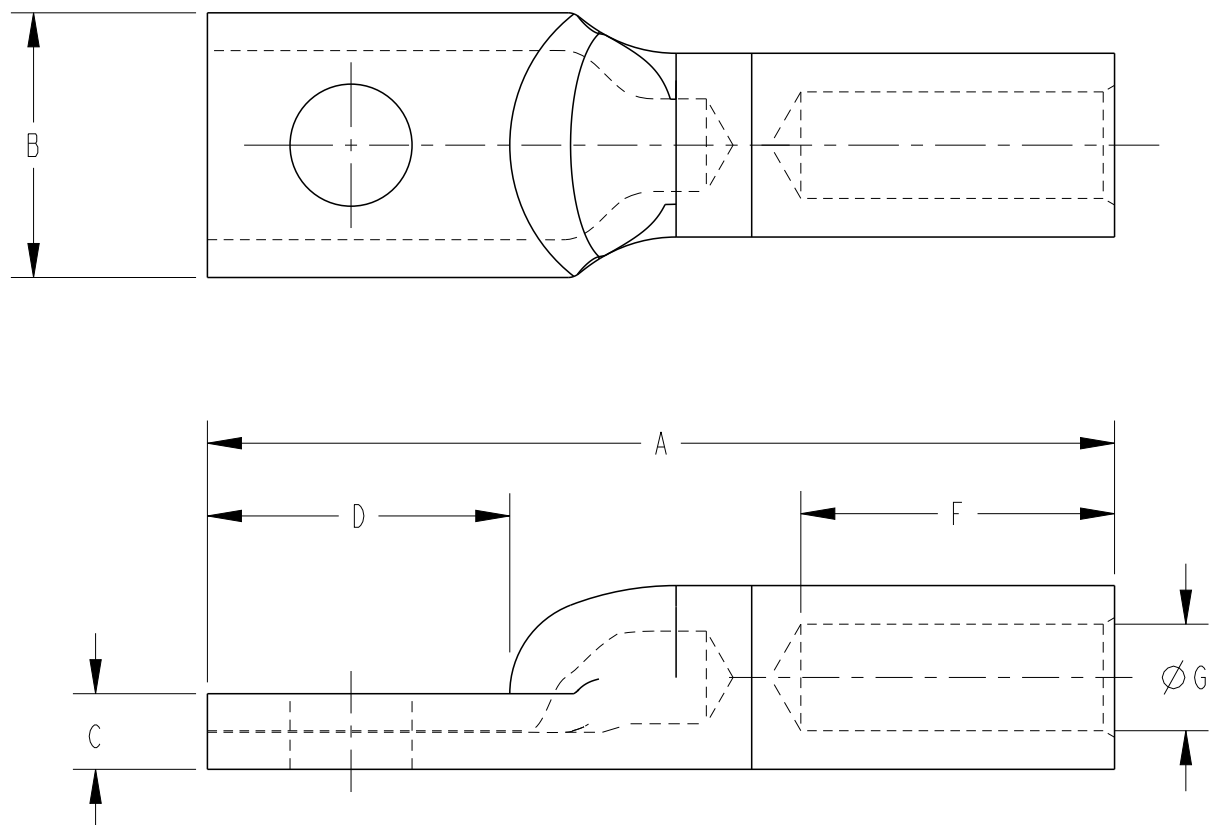



| P | LTR | DESCRIPTION     | DATE      | DWN | APVD |
|---|-----|-----------------|-----------|-----|------|
|   | A   | INITIAL RELEASE | 25NOV2020 | AS  | MF   |
|   |     |                 |           |     |      |
|   |     |                 |           |     |      |



| TCPN       | CATALOGUE NUMBER | CONDUCTOR AREA (mm <sup>2</sup> ) | STUD SIZE | DIMENSIONS (mm) |    |     |    |    | CRIMPING DIE |
|------------|------------------|-----------------------------------|-----------|-----------------|----|-----|----|----|--------------|
|            |                  |                                   |           | A               | B  | C   | D  | F  |              |
| EF0661-000 | BGRV35M10        | 35                                | M10       | 70              | 23 | 4.5 | 24 | 24 | 38-92CU      |
| EF1830-000 | BGRV50M8         | 50                                | M8        | 78              | 23 | 6   | 28 | 24 | 38-115CU     |
| EF0662-000 | BGRV70M10        | 70                                | M10       | 83              | 22 | 6   | 28 | 24 | 38-115CU     |
| F68459-000 | BGRV70MB         | 70                                | Nil       | 83              | 22 | 6   | 28 | 24 | 38-115CU     |
| EF1829-000 | BGRV95M12        | 95                                | M12       | 103             | 31 | 9.8 | 34 | 38 | 38-165CU     |

|   |  |                   |           |   |                    |
|---|--|-------------------|-----------|---|--------------------|
| THIS DRAWING IS A CONTROLLED DOCUMENT.                          |  | DWN<br>A. SAMAL   | 25NOV2020 |  TE Connectivity |                    |
| DIMENSIONS:<br>mm   |  | CHK<br>S. CHAD    | 25NOV2020 |   |                    |
| TOLERANCES UNLESS OTHERWISE SPECIFIED:                          |  | APVD<br>M. FRATER | 25NOV2020 | NAME<br>REVERSE BI-METAL LUGS   |                    |
| 0 PLC ±<br>1 PLC ±<br>2 PLC ±<br>3 PLC ±<br>4 PLC ±<br>ANGLES ± |  | PRODUCT SPEC<br>- |           | RESTRICTED TO<br>-  |                    |
| MATERIAL<br>-   |  | FINISH<br>-       |           | APPLICATION SPEC<br>-   |                    |
|   |  | WEIGHT<br>-       |           | SIZE<br>A3  | CAGE CODE<br>00779 |
|   |  | CUSTOMER DRAWING  |           | DRAWING NO<br>E00001131   | SCALE<br>NTS       |
|   |  |                   |           | SHEET<br>1  | OF<br>1            |
|   |  |                   |           | REV<br>A  |                    |