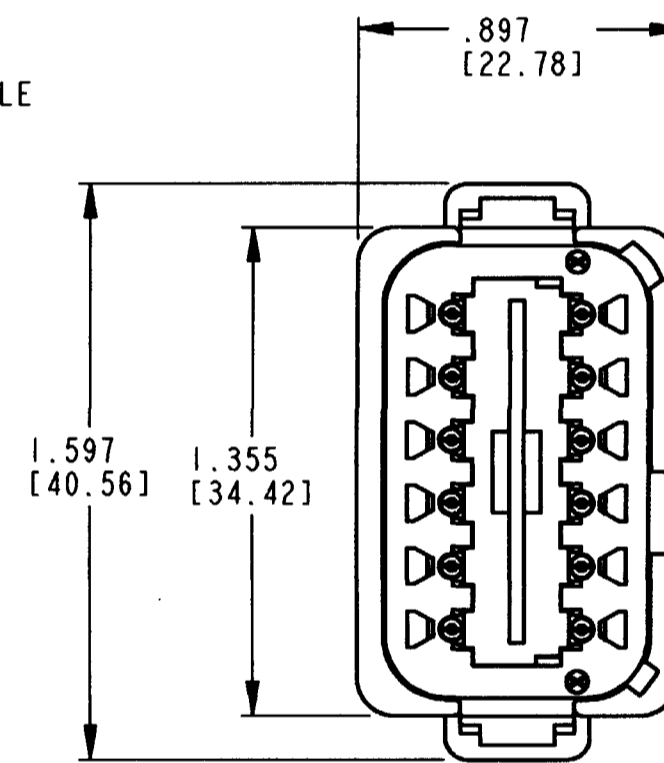
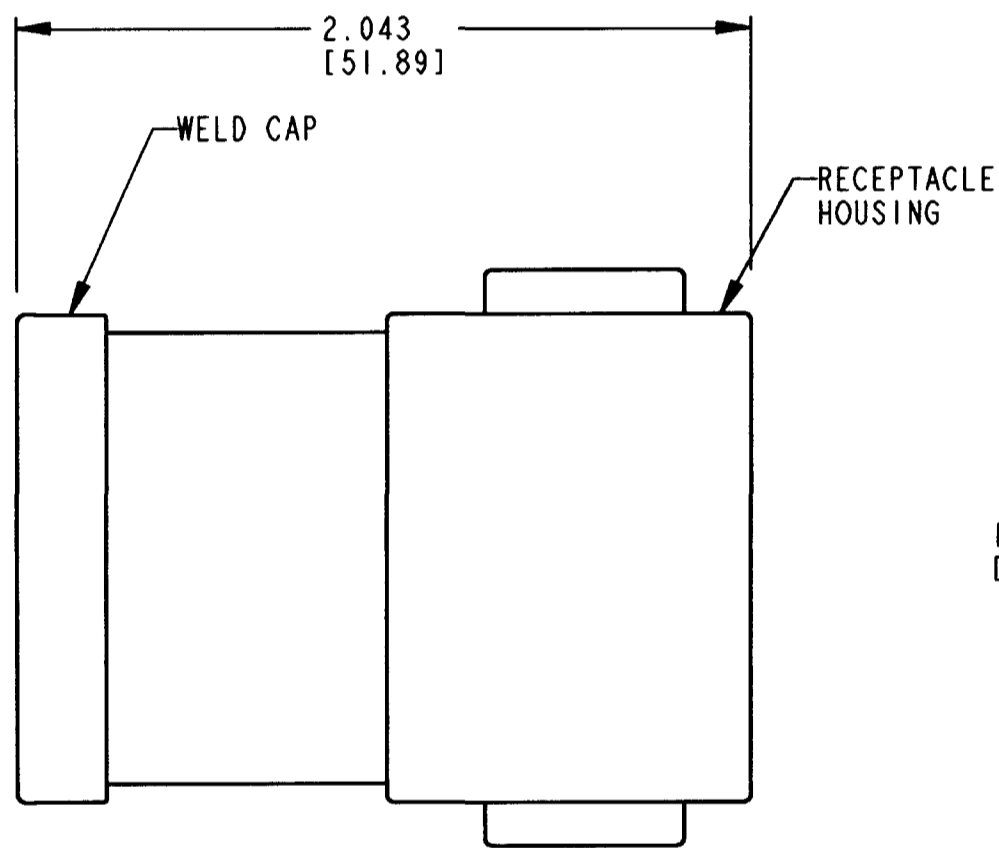
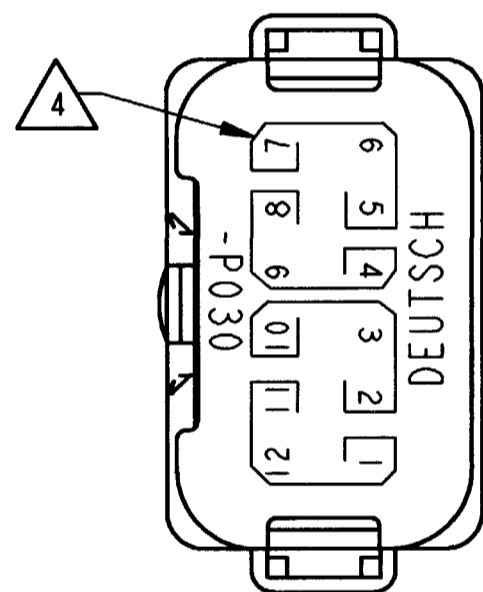


**3D VIEW**



REV  
NC **DT04-12PA-P030**

REVISIONS			
SYM	DESCRIPTION	DATE	APPROVED
NC	NEW RELEASE PER E.O. P16658	5-5-00	RNL

5. MAXIMUM CURRENT RATING FOR THE 3 PIN BUSBAR IS 13 AMPS.
4. BORDERS SIGNIFY THAT EACH GROUP OF PINS (PINS 1,11,12, PINS 2,3,10, PINS 4,8,9, AND PINS 5,6,7 ARE BUSSED TOGETHER WITH A 3 PIN BUSBAR.
3. THIS DT04-12PA-P030 MATES WITH DT06-12SA-\*\*\*\* (\*\*\*\* = ALL MODIFICATIONS). CONSULT FACTORY FOR MODIFICATIONS.
2. DIMENSIONS ARE ±.025[0.63] UNLESS OTHERWISE SPECIFIED.
1. DIMENSIONS ARE IN INCHES [MILLIMETERS].
- NOTES:

SIGNATURE & DATE	
DR	P. BURKE 5/2/00
CHK	<i>[Signature]</i>
PE	<i>[Signature]</i> 5-4-00
APPD	R. Koed 5-5-00
SCALE	NONE WT

DT 12 WAY RECEPTACLE  
KEY ARRANGEMENT -A-  
(4) 3 PIN BUSBARS-NICKEL PLATED  
COLOR: GREY

ENVELOPE

CP	MATL. CODE
<b>The Deutch Company</b>	
DEUTSCH I.P.D. 3850 INDUSTRIAL AVE. HEMET, CALIF. 92545	
<b>B</b>	<b>DT04-12PA-P030</b>
DWG SIZE	CODE 11139 SHEET 1 OF 1