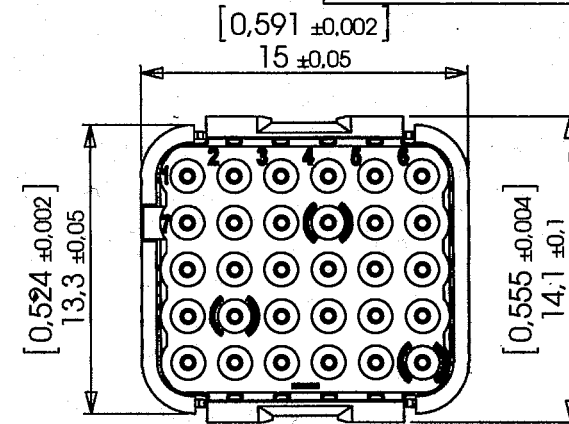
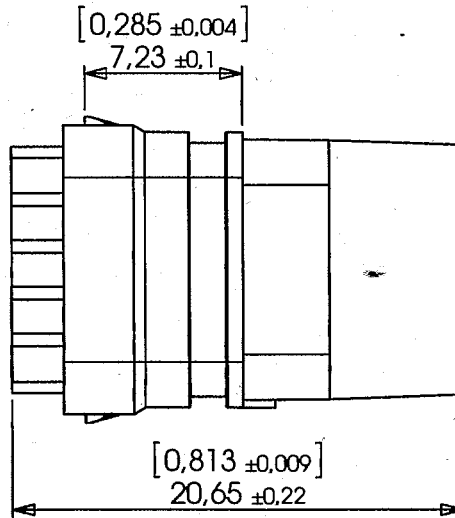
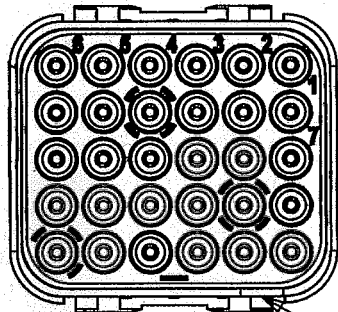


DMC-MR 30-23 PX

Dimensions externes suivant EN4165-003
External dimensions according to EN4165-003

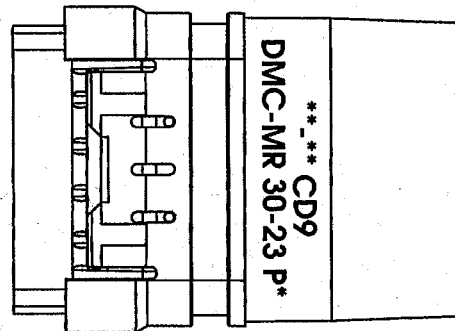
EX



X: Codage A,B,C,D,E,F,G,H ou N
X: Keying A,B,C,D,E,F,G,H, or N
(1)

CARACTERISTIQUES:


Température d'utilisation: -55°C à +175°C
Matériaux: Thermoplastique, silicone fluoré violet
Masse: 3,4g Maxi (Sans contact)
Dimensions: Millimètres (pouces)
Contacts:
- Mâle #23 câble cuivre - 182-4043-23
Outil insertion/extraction contacts:
-M81969/14-01



CHARACTERISTICS:

Operating temperature range: -55°C to +175°C
Materials: Thermoplastic and purple fluorosilicone
Weight: 3,4g Maxi (Without contact)
Dimensions: Millimeters [inches]
Contacts:
- Pin #23 for copper cable - 182-4043-23
Contacts insertion/extraction tool:
-M81969/14-01

Module livré avec contact mâle / Module delivered with pin contact

a		27/04/15	CREATION	SERIE DMC-M	DATE 27/04/2015	VISA Creation Created	VISA Approbation Approval	
Revision	Date	Observations		DESIGNATION	REF :	VERSION REVISION		
				Module femelle pour contact mâle #23 Socket module for #23 pin contact	DMC-MR 30-23 PX (1)	-	-	
ORIGINE : ORIGIN :		DE156/13					204-19-C/01	
 Connecteurs Electriques Deutsch 17, rue LAVOISIER - BP 117 - 27091 EVREUX CEDEX 09 - FRANCE				FICHE TECHNIQUE TECHNICAL DATA SHEET				