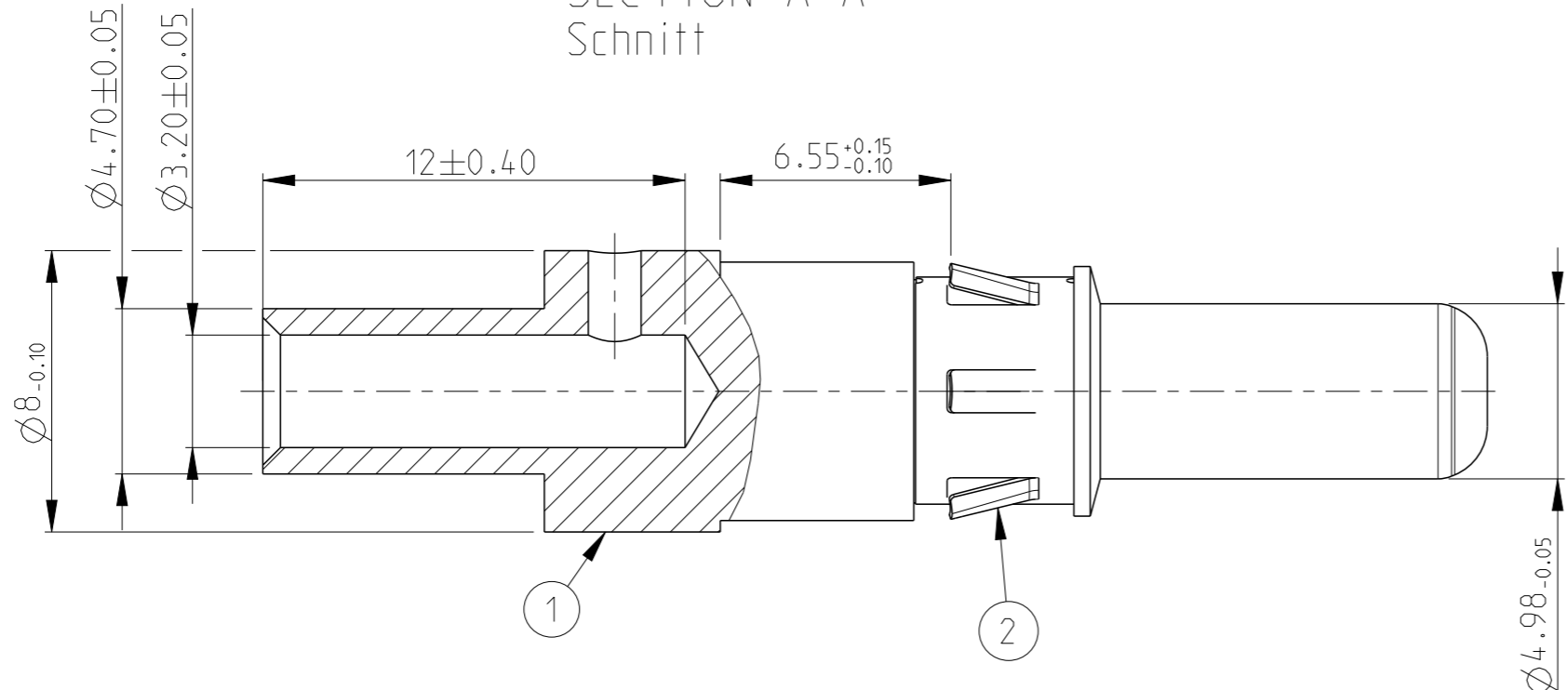


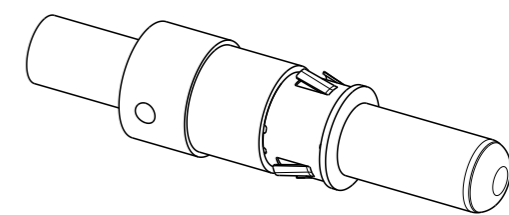
LOC	DIST	REVISIONS				
P	LTR	DESCRIPTION	DATE	DWN	APVD	
-	-	A	NEW DRAWING	06JUL2016	MGM	CE
		A1	REVISED PER PCN E-19-012270	05AUG2019	MK	PV

SECTION A-A Schnitt



NOTES Bemerkungen

- BULK PACKAGING IN CORRUGATED BOX
Lose im Beutel und Versandkarton
- ALL SYMMETRY DIMENSION 0.1
Alle Symmetriemaße
- SUITABLE SOCKET CONTACT SEE DRAWING: DARS24923
Passender Buchsenkontakt siehe Zeichnung: DARS24923



SCALE 2:1
Maßstab

IMPORTANT: THE POSITION MAY VARY ACCORDING TO THE REAL WIRE CROSS SECTION AND COMPOSITION.

Wichtig:
Die Position kann entsprechend dem tatsächlichen Drahtdurchmesser und -aufbau variieren.

	REF.	NOTE
CRIMPING TOOL Crimpzange	OUT0405-0110ASO (Daniels M317)	Position - Stellung SEE TABLE 1
LOCATOR Stellungsregler	(DANIELS TP1024)	
EXTRACTION TOOL Ausbauwerkzeug	OUTCC IEXT-E0100	

WIRE SECTION Drahtsektion	Position Stellung
2.5mm ² 3mm ² 4mm ²	3

REV	QTY Stueck	REV	PLATING Oberfläche	TE ORDER-NO. TE Bestell-Nr.	DESCRIPTION Beschreibung	ITEM NO
A	1	A	-	DARS24924-000A3	CLIP Clip	2
	1	A	Ag		PIN BODY Stiftkörper	1

THIS DRAWING IS A CONTROLLED DOCUMENT.		DWN 06 JUL 2016 CHANDRASHEKAR.S		TE Connectivity	
DIMENSIONS: mm		TOLERANCES UNLESS OTHERWISE SPECIFIED: ACC. TO ISO 8015			
				NAME PIN CONTACT 2.5 TO 4 SQMM, CAR CONNECTOR Stiftkontakte 2.5 to 4 SQMM	
MATERIAL SEE TABLE Siehe Tabelle		FINISH SEE TABLE		SIZE A3	
		WEIGHT 7.77 g		CAGE CODE -	
		CUSTOMER DRAWING		DRAWING NO DARS24924-000A3	
		SCALE 5:1		RESTRICTED TO	
		SHEET 1 OF 1		REV A1	