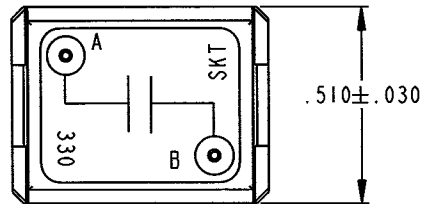


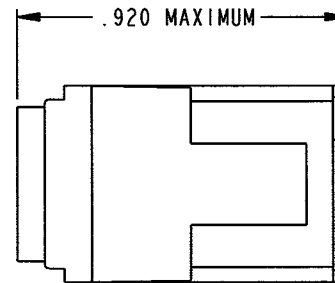
PROPERTY OF DEUTSCH E.C.D.

This drawing contains proprietary information that shall not be disclosed, duplicated, nor used in whole or in part for any purpose other than to evaluate this drawing.

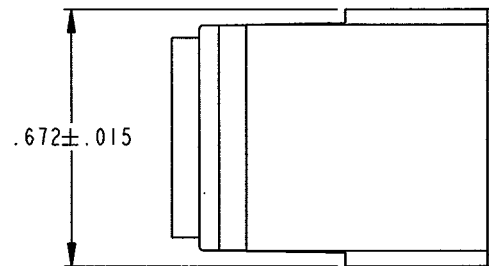
-		CTJ420E330		REVISIONS	
REV		DESCRIPTION	DATE	APPROVED	
-		NEW RELEASE PER E.O. C6759	070208	P.C.	



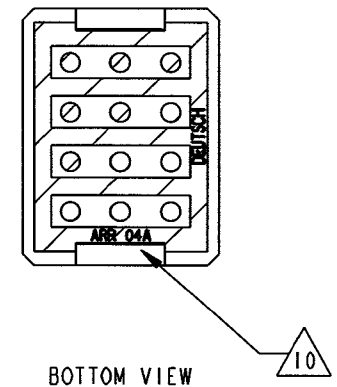
TOP VIEW



END VIEW



SIDE VIEW



BOTTOM VIEW

10. ARR 04A BUSSING DESIGNATION IS INSIGNIFICANT AND HAS NO RELATIONSHIP TO WIRING SCHEMATIC.
9. CAPACITOR: ONE (1) PER M39014/05-2237.
8. TEMPERATURE RANGE -67°F TO 257°F (-55°C TO 125°C).
7. MATERIALS & FINISHES:  
 HOUSING - THERMO PLASTIC  
 GROMMET - SILICONE ELASTOMER  
 PIN CONTACT - COPPER ALLOY PLATED GOLD
6. REQUIRES CONTACT TOOL NO. M15570-20.
5. SEE ENVELOPE DRAWING NO. DCR-1\*\*\* FOR SUITABLE RAIL ASSY.
4. FOR CONTACT DATA SEE ENVELOPE DRAWING 1625-1-0000.
3. CTJ420E      330  
                   └───┬───┘  
                   └───┬───┘  
                   CIRCUIT ARRANGEMENT  
                   BASIC IDENTIFIER
2. THE CIRCUIT IDENTIFICATION WILL BE SCREENED ON JUNCTION.
1. DIMENSIONS ARE IN INCHES UNLESS OTHERWISE SPECIFIED.

SIGNATURE & DATE	
DR	J. FRIEDHOF 020318
CHK	<i>P.C. 070208</i>
PE	J. FRIEDHOF 020318
APPD	<i>W. White 070213</i>
SCALE	WT

JUNCTION ASSEMBLY  
 ELECTRONIC COMPONENT  
 SIZE 20  
 SIZE 20 CONTACT  
 330 ARRANGEMENT  
 ENVELOPE

CP	MATL CODE
<b>DEUTSCH</b>	
ENGINEERED CONNECTING DEVICES	
5733 W. Whittier Ave. Hemet, California	
<b>A</b> DWS SIZE	CTJ420E330
	CODE 11139 SHEET   OF