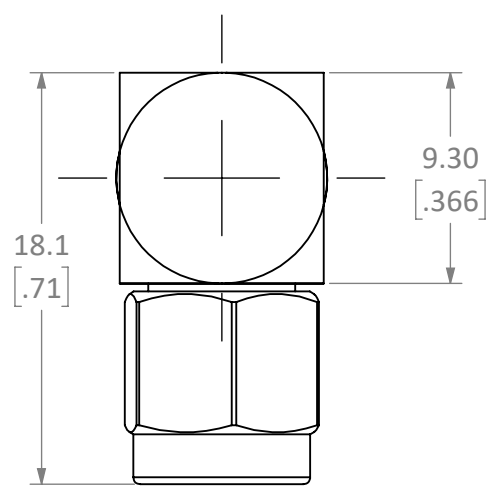
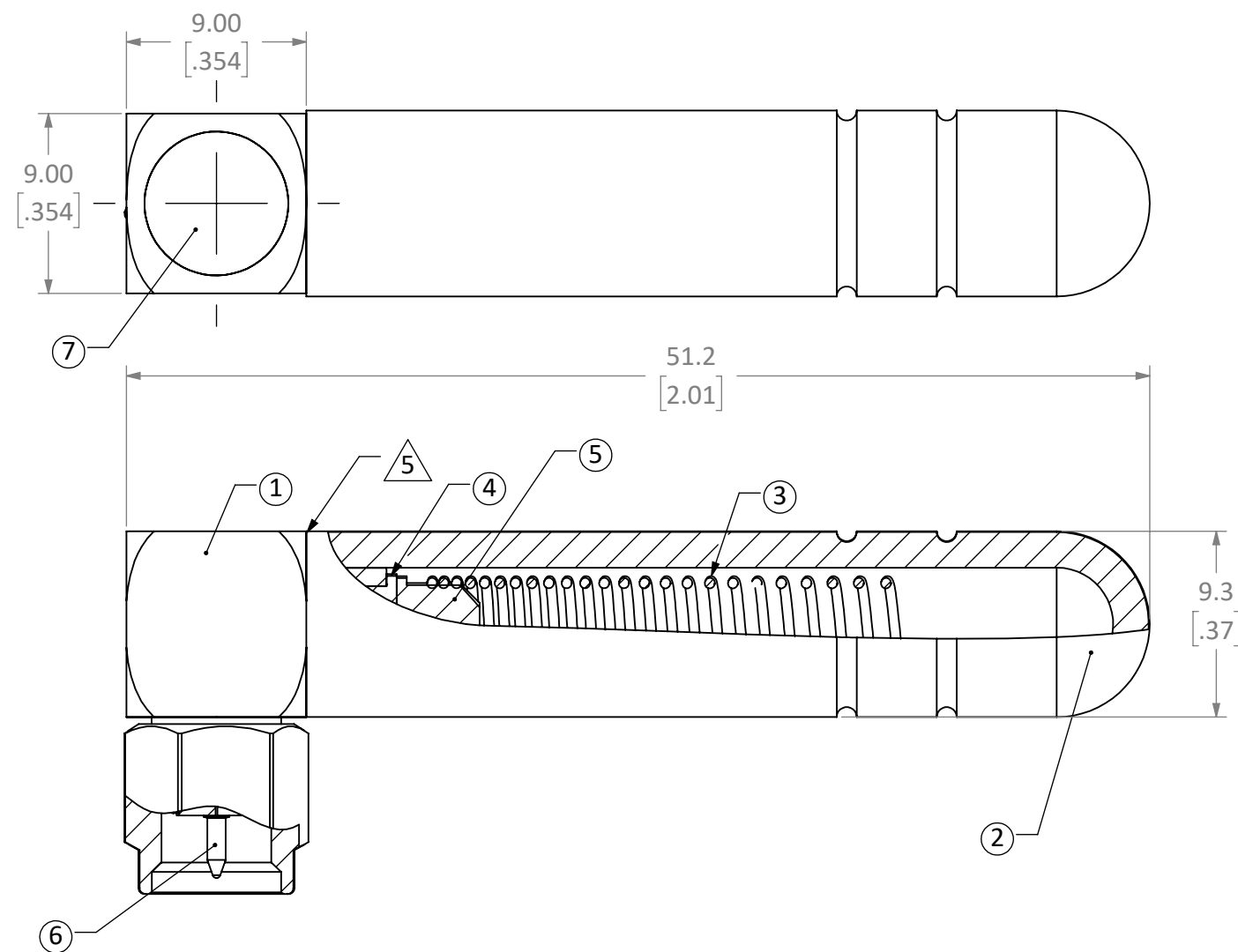


BILL OF MATERIALS		
ITEM	DESCRIPTION	QTY.
1	CONNECTOR BODY, BRASS SMA, 90°, MIL-348	1
2	COVER, TPU-PLAS, 1.72THK, BLACK	1
3	ANTENNA, COIL, SWC, 450-470MHz, GRIP BASE	1
4	SPACER, DIELECTRIC, PTFE, INSERT	1
5	BRASS ANTENNA CONNECTION ASY	1
6	PIN, BRASS SMA BODY ASSEMBLY	1
7	COVER, LINK, BRASS, PRESS FIT	1

REVISIONS			
REV	DESCRIPTION	DATE	APPV



NOTES: (UNLESS OTHERWISE SPECIFIED)

- ALL DIMENSIONS ARE IN MILLIMETERS [IN].
- DIMENSIONS APPLY AFTER FINISHING.
- MANUFACTURE TO BE COMPLIANT WITH EU RoHS DIRECTIVE, USE MATERIALS THAT DO NOT CONTAIN REACH SUBSTANCES OF VERY HIGH CONCERN >1000ppm, AND USE DRC CONFLICT-FREE SOURCED MATERIALS.
- INTERFACE DESIGN IAW MIL-STD-348A (SMA RF COAX CONNECTORS)
- PERMANENTLY INSTALL CAP [FN2] AS SHOWN USING ADHESIVE AND MECHANICAL SNAP FEATURE.
- ELECTRICAL:
 - IMPEDANCE: 50Ω
 - FREQ. 450-470 MHz
 - GAIN: 0dBi ± .5 dBi
 - SWR: 2.0 MAX

WARNING: THIS DRAWING CONTAINS PROPRIETARY INFORMATION THAT IS THE SOLE PROPERTY OF LINX TECHNOLOGIES, AND SHALL BE TREATED AS SUCH. NO DISCLOSURE OR REPRODUCTION OF THIS DOCUMENT IS PERMITTED, IN WHOLE OR IN PART, WITHOUT THE EXPRESS WRITTEN PERMISSION OF LINX TECHNOLOGIES OR ITS DESIGNATED AGENTS.

STE 159 ORT LANE
connectivity MERLIN, OR 97532

MATERIAL: VAR	INTERPRET DIMENSIONS AND TOLERANCES PER ASME Y14.5. .X ±2.0 .XX ±1.00 .XXX ±.500	PROJECTION:
WEIGHT:	ANGLES: ±1° SURFACE:	
FINISH:	DRAWN: JHAGER DT: 10/30/20 ENGR: DASARATHAN DT: 10-JUL-08	

TITLE: ANT 450MHZ COMPACT RA WHIP SMA		
SIZE B	DWG. NO. C-ANT-450-RHR-SMA	REV 1
SCALE: 3:1	DO NOT SCALE DRAWING	SHEET 1 OF 1