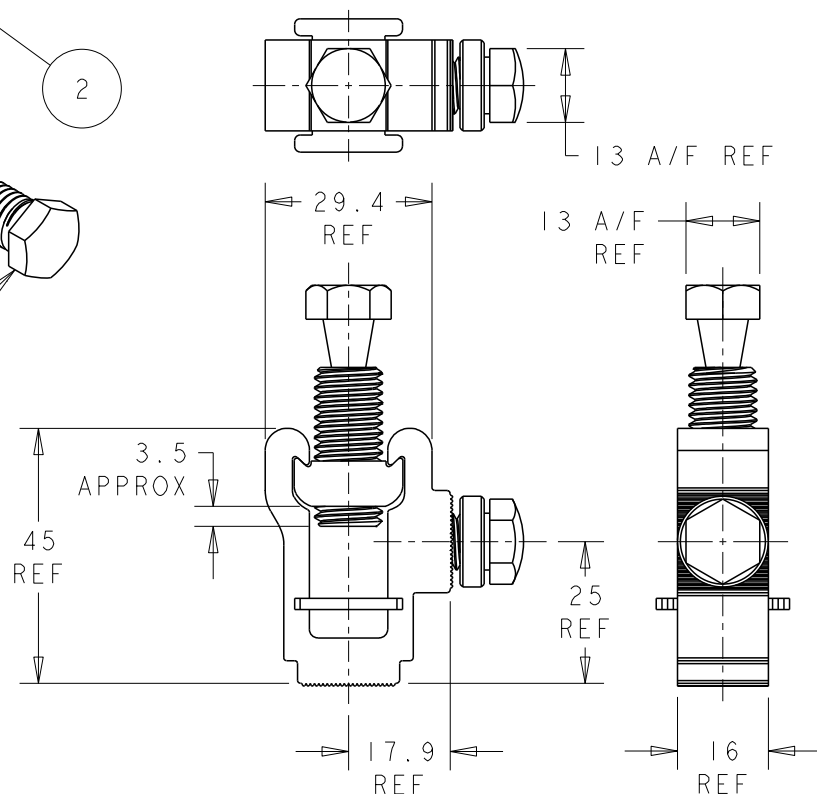


SEE NOTE 1 ↔
SEE NOTE 1 ↔
SEE NOTE 2 ↔
SEE NOTE 2 ↔
SEE NOTE 2 ↔

ITEM	PART/DRG NO	QTY	DESCRIPTION
1	01-500-0013	1	BRASS CNE CONNECTORS PRESSURE PLATE
2	01-500-0014	1	BRASS CNE CONNECTOR SHOE
3	01-700-0038	1	M12x1.75 13 A/F 42.5 LONG BRASS SINGLE-SHEAR BOLT WITH FLAT END
4	01-703-0009	1	M10x1.5 13 A/F 20.0 LONG BRASS NON-SHEAR BOLT
5	BAH-015000018	1	BRASS CNE END TERMINATION BODY - TYPE 1 WITH M10 BOTTOM & SIDE HOLES
6	BAH-017060001	1	16.0 O/D 10.2 I/D BRASS SERRATED WASHER



NOTES :

1. SHEAR-BOLT TO BE SCREWED THROUGH SHOE BY 2 COMPLETE TURNS (3.5mm APPROX).
2. FIT M10 NON-SHEAR BOLT AND SERRATED WASHER INTO BODY, FINGER TIGHT. WASHER SERRATIONS TO BE FACE DOWN ONTO BODY SERRATIONS.
3. APPROX PART WEIGHT = 146.06g

H	NOTE 2 REVISED, WAS "ALL OTHER COMPONENTS TO BE SUPPLIED LOOSE"	BH-00906	31/07/13
G	PICTORIAL CHANGES TO BAH-015000018 - EXTRUDED SERRATIONS REPLACE SPIRAL SERRATIONS, 17.9 REF WAS 15.8 REF & B&H SHORT DESCRIPTION WAS BTCNEIS/BSMIOSE	BH-00873	05/04/13
F	BAH-015000085 (x1) & BAH-025000093 (x1) REMOVED AND REPLACED WITH BAH-015000013 (x1), BAH-015000014 (x1), BAH-015000018 (x1) & BAH-017000038 (x1)	BH-00842	06/12/12
E	BAH-015000013 (x1), BAH-015000014 (x1), BAH-015000018 (x1) & BAH-017000038 (x1) REMOVED AND REPLACED WITH BAH-015000085 (x1) & BAH-025000093 (x1)	BH-00746	27/03/12
D	BODY BAH-015000018 WAS WRONGLY SHOWN AS BAH-015000019	BH-00607	23/11/09
C	ASSEMBLY NOTES 1 & 2 ADDED	BH-00182	27/11/06
B	PART No WAS BTCNEIS/SMIOSE, DRG No WAS 1022-A01	S.P.W	19.11.01
A	FIRST ISSUE	ET	4.10.95
Revision	Description	Name/DMR	Date

Design/Drawn	S.P.WEST	Date	19 NOV 2001	Scale (UOS)	3:4	THIRD ANGLE PROJECTION	A4
PCN/RPN No	069678-000	Checked/Approved by					
Drawing/Part No	BAH-025000025	Drawing Type	ASSEMBLY/CUSTOMER	Rev	H		



Material	VARIES
Finish	VARIES
Tolerances (UOS)	N/A
B&H Short Desc.	BTCNEIS/BSM10/MWB

Part Description	- IF IN DOUBT ASK - DO NOT SCALE -
BRASS CNE END TERMINATION - TYPE 1 WITH M10 BOTTOM & SIDE HOLES, SINGLE-SHEAR BOLT, NON-SHEAR BOLT & SERRATED WASHER	

REMOVE ALL BURRS AND SHARP EDGES - SURFACES TO BE FREE FROM SCRATCHES AND DEFECTS - ALL THREADS TO BS3643 PT 2

© 2013 TYCO ELECTRONICS UK LTD, WITHAM, UK