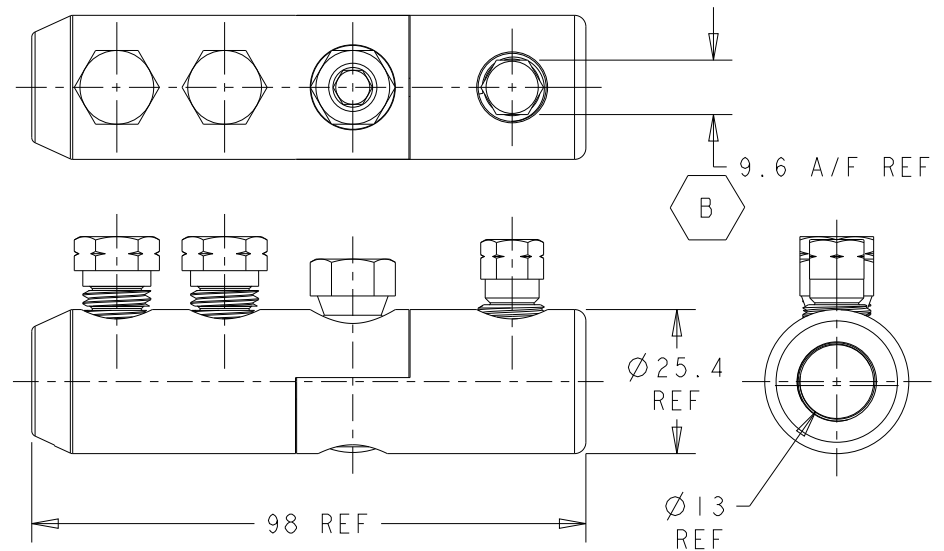


ITEM	PART/DRG NO	QTY	DESCRIPTION
1	CK0701-000	1	MAGNEFIX MECHANICAL CONNECTOR BODY 25.4 O/D 13.0 I/D - THREADED HALF (16mm ² TO 95mm ²)
2	CK0702-000	1	MAGNEFIX MECHANICAL CONNECTOR BODY 25.4 O/D 12.8 I/D - COUNTERBORED HALF (16mm ² TO 95mm ²)
3	CK0704-000	1	M12x1.5 10 A/F 17.5 LONG BRASS SINGLE-SHEAR BOLT WITH FLAT END
4	CK0705-000	2	M12x1.5 13 A/F 23.0 LONG BRASS MULTI-SHEAR BOLT WITH RECESSED END
5	CK0706-000	1	M12x1.5 13 A/F 34.1 LONG ALUMINIUM MID-BOLT (REMOVABLE)
6	CK0707-000	1	ALUMINIUM REDUCING INSERT - Ø12.8 O/D Ø11.0 I/D 40.5 LONG WITH ORIENTATION LUG



Material	VARIES
Finish	VARIES
Tolerances (UOS)	-
B&H Short Desc.	BSMV16/95-MFX

- IF IN DOUBT ASK - DO NOT SCALE -

Part Description
MAGNEFIX MECHANICAL CONNECTOR
25.4 O/D 12.8/13.0 I/D
(16mm² TO 95mm²)

B	ECR-21-116618	RK	O8SEP21
A	FIRST ISSUE	BH-00300	16/08/07
Revision	Description	Name/DMR	Date
Design/Drawn	D M EATON	Date	14-Aug-07
Scale (UOS)	3:4	Part Weight	
TCPN	CK0703-000	THIRD ANGLE PROJECTION	A4
Drawing/Part No	BAH-022100040	Drawing Type	ASSEMBLY/CUSTOMER
		Rev	B

REMOVE ALL BURRS AND SHARP EDGES - SURFACES TO BE FREE FROM SCRATCHES AND DEFECTS - ALL THREADS TO BS3643 PT 2

© 2017 TYCO ELECTRONICS UK LTD, WITHAM, UK