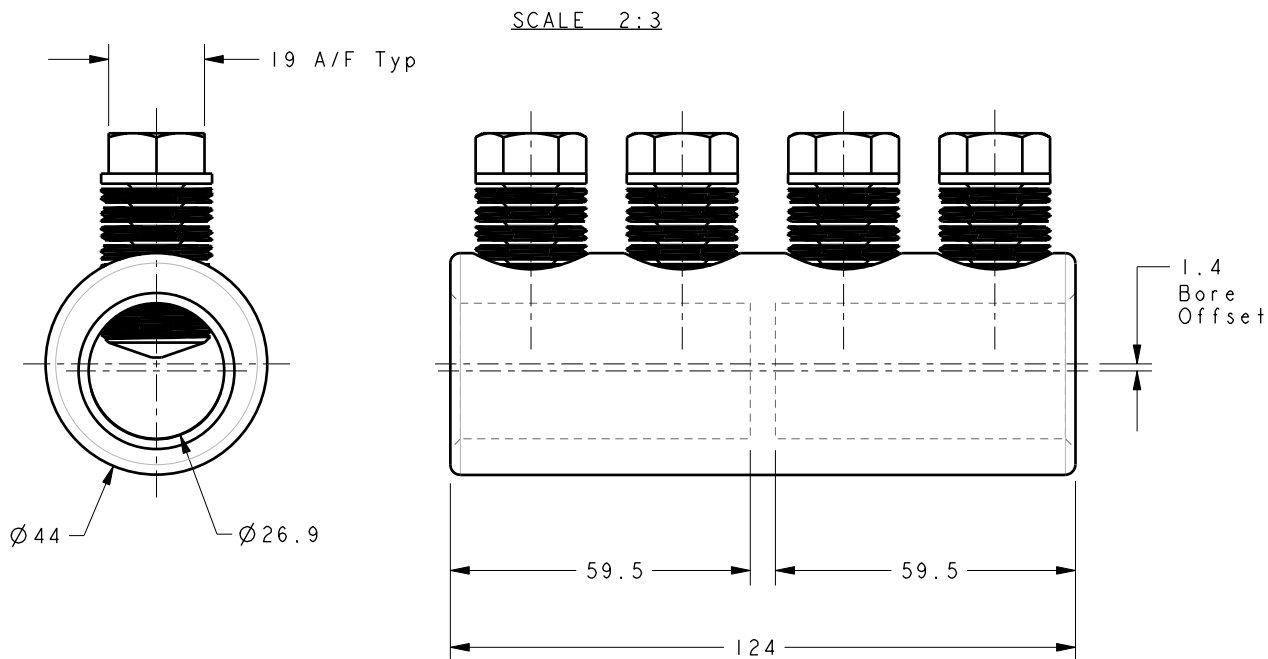
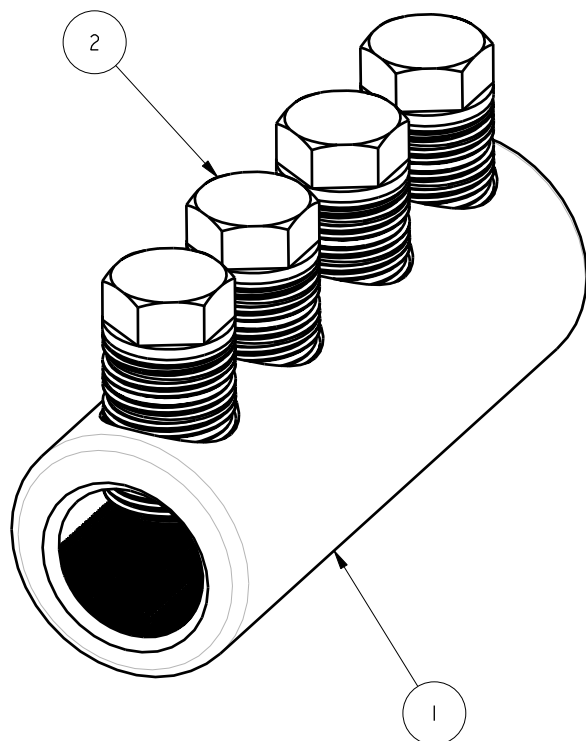


ITEM	PART/DRG NO	QTY	DESCRIPTION
1	01-209-0048	1	11KV ALUMINIUM STRAIGHT BLOCKED CONNECTOR BODY - SOLID TYPE 44.0 O/D 26.9 I/D
2	01-701-0029	4	M22x1.5 19 A/F 44.5 LONG BRASS MULTI-SHEAR BOLT



Notes :

- Components to be assembled as shown, packed in a polythene bag and labelled as below:

Tyco Electronics - B&H
 HVSTM22SOUTC-ASS
 Block Connector for 95-300sqmm Al/Cu Cable
 HEC Stock: 115321
 Batch Number
 Manufacturing Date

- Pack in sturdy cardboard boxes in layers. Use cardboard to divide the layers and fill any space with packing paper.



Material	VARIES
Finish	VARIES
Tolerances (UOS)	-
B&H Short Desc.	HVSTM22SOUTC-ASS

IF IN DOUBT ASK - DO NOT SCALE
 Part Description
 11KV ALUMINIUM STRAIGHT BLOCKED CONNECTOR - SOLID TYPE - 44.0 O/D 26.9 I/D (PRE-ASSEMBLED)

Revision	NOTE 2 ADDED	BH-00161	18/05/06
Revision	FIRST ISSUE	S.P.W	17.7.00
Revision	Description	Name/DMR	Date
Design/Drawn	S.P.WEST	Date	14-Aug-00
PCN/RPN No	C46437-000	Scale (UOS)	4:5
Checked/Approved by		THIRD ANGLE PROJECTION	A4
Drawing/Part No.	02-209-0003	Drawing Type	ASSEMBLY/CUSTOMER
		Revision	B