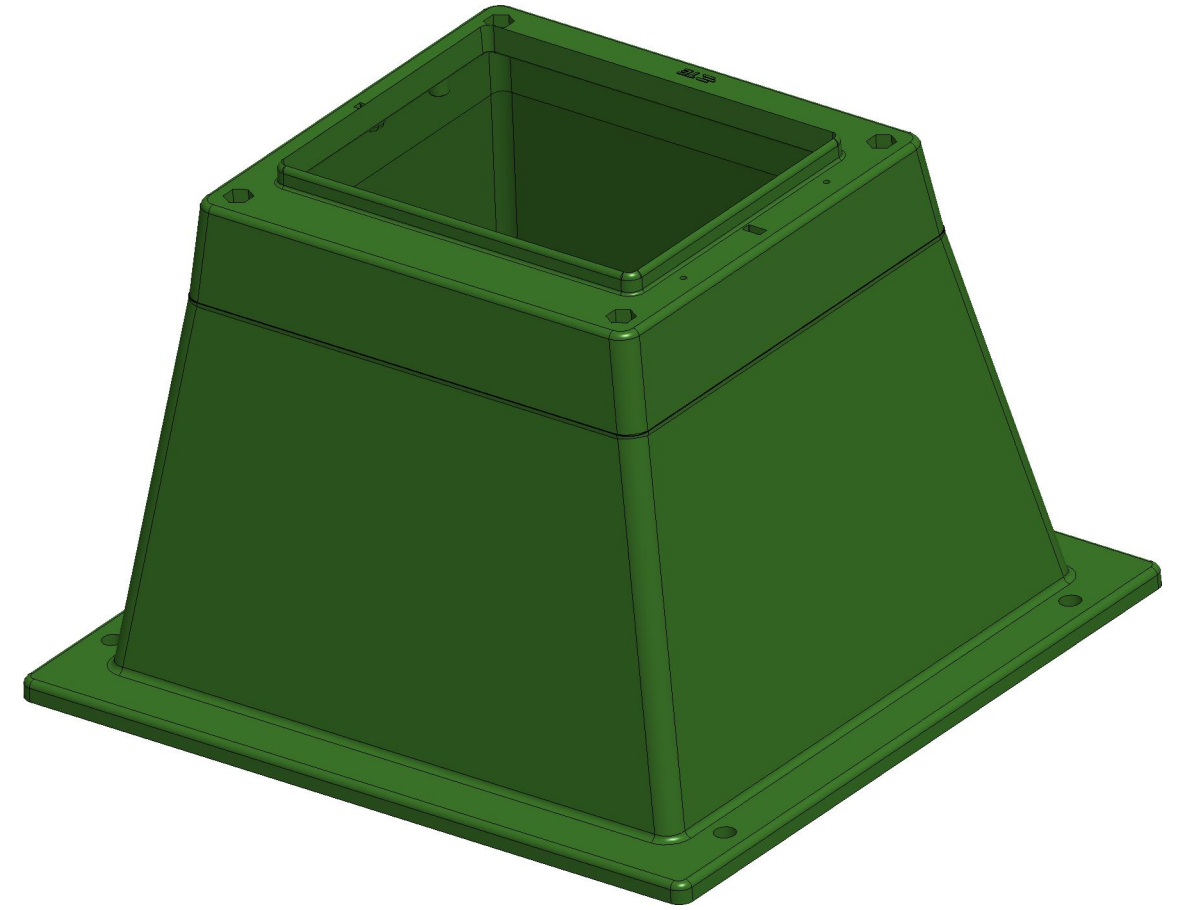
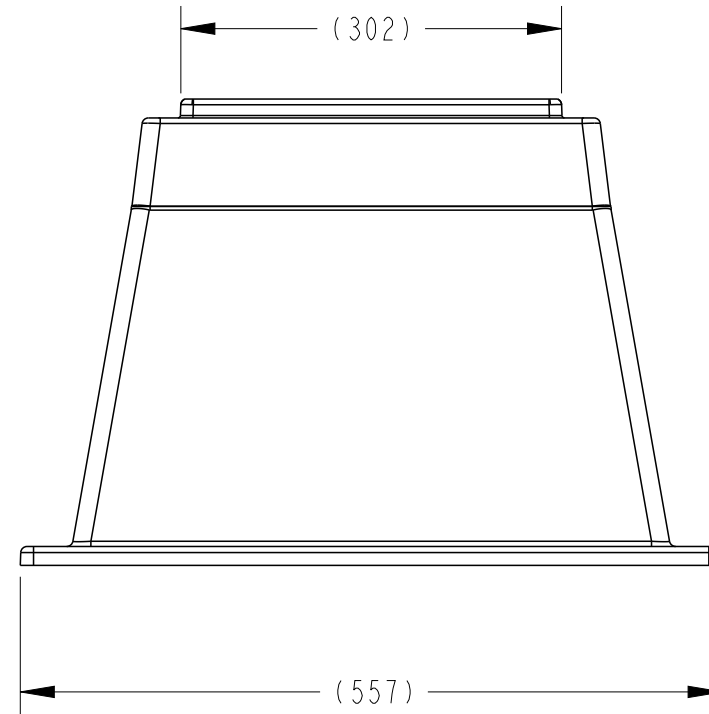
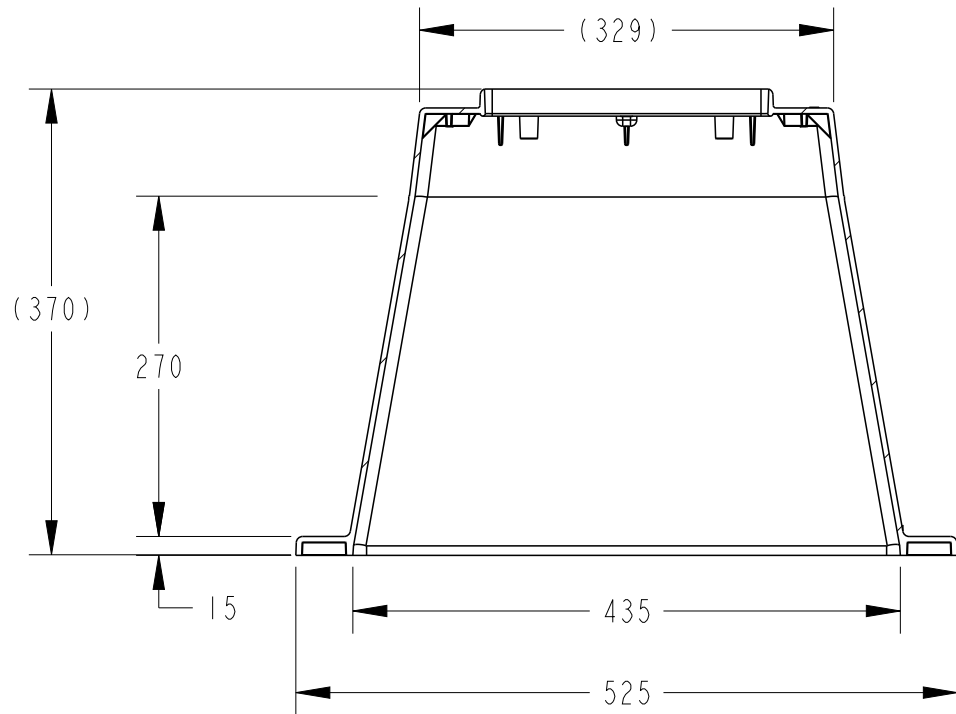
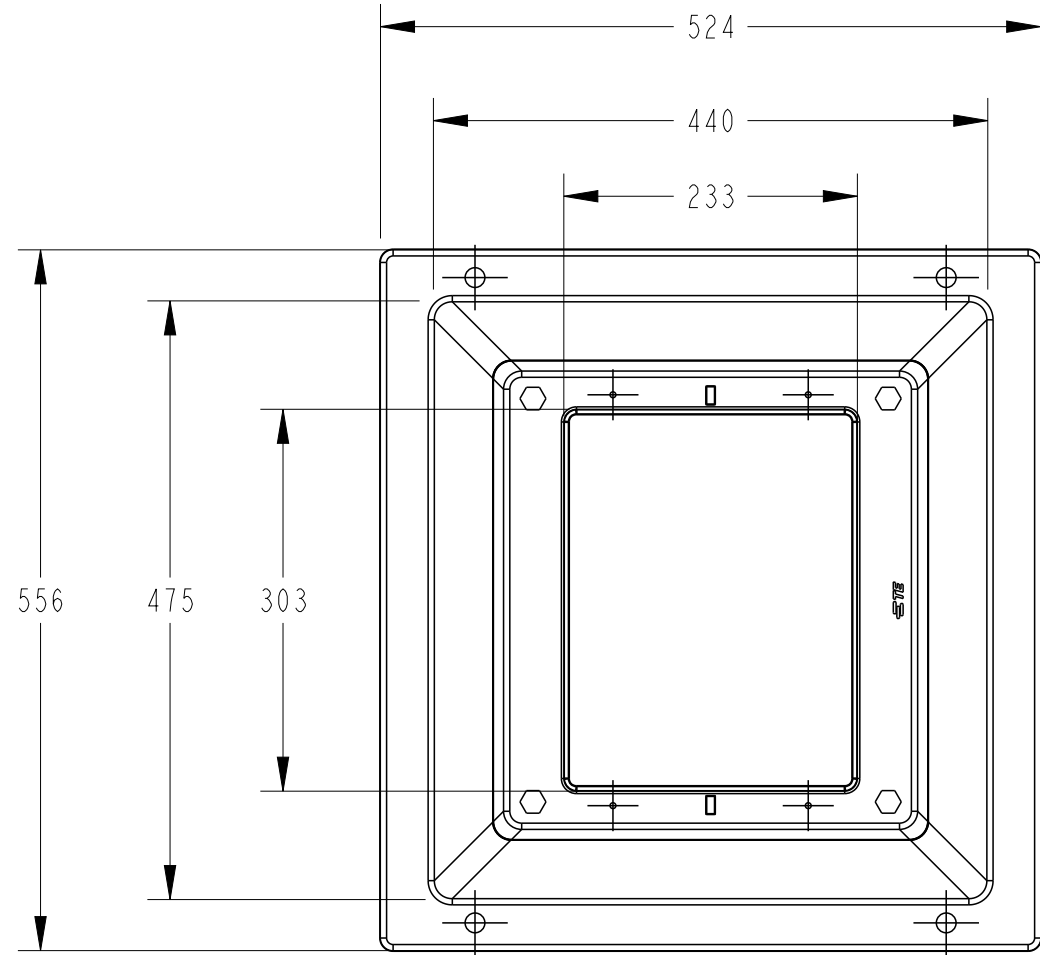


THIS INFORMATION IS CONFIDENTIAL AND PROPRIETARY TO TE CONNECTIVITY CORPORATION AND ITS WORLDWIDE SUBSIDIARIES AND AFFILIATES. IT MAY NOT BE DISCLOSED TO ANYONE, OTHER THAN TE CONNECTIVITY PERSONNEL, WITHOUT WRITTEN AUTHORIZATION FROM TE CONNECTIVITY CORPORATION, AUSTRALIA.

DRAWING NO
AU35077
THIS DRAWING IS A CONTROLLED DOCUMENT




SCALE 1:5

NOTES:

1) LOGO EMBOSSED 2mm FROM SURFACE.

| ITEM | PART NUMBER | DESCRIPTION |
|------|-------------|------------------|
| 1 | PBW | PILLAR BASE WIDE |

| | | | | | | | | | | | | | | | | | |
|------|-----|-----|-----------------|--|----------|-----|---|--|---|--|------------------|--|--------------|-----------------------|------------|---------|----------|
| | | | | | | | IMPLIED NOTES BURRS AND SHARP EDGES REMOVED SCREW THREADS ARE TO AS 1275 DO NOT WORK TO DIMS MARKED REF SURFACE FINISH 6.3 U.N.O. DIMS ARE IN mm. DO NOT SCALE | IMPLIED TOLERANCES HOLE DIA AND LOCATIONS.±0.5mm DIMENSIONS UP TO 30mm...±1.5mm DIMENSIONS OVER 30mm...±5% UP TO A MAX OF.....±5mm ANGULAR DIMENSIONS.....±5° | TCPN PART Alias UTX/DUL TURRET_WIDE_BASE Cat No > | TITLE PILLAR WIDE BASE CUSTOMER DRAWING | | | | | | | |
| LOC | | | | | | | | | | DRAWN JS | DATE 19/10/20 |  TE Connectivity 2/3 Corella Close Berkeley Vale NSW 2261 Australia | | | | | |
| DIST | — | I | NEW RELEASE | | 19/10/20 | JS | RN | MATERIAL DESC PPE MATERIAL MOSS GREEN COLOUR G13 | | CHECKED RN | APPROVED RN | | | | | | |
| | POS | REV | REVISION RECORD | | DATE | DWN | APVD | MATERIAL NO > | MATL SPEC/STD/DRG NO > | PROCESS SPEC HEAT TREAT/PLATING NO > | SIZE A3 | PROJECTION 3RD ANGLE | SCALE 1:6 | DRAWING NO AU35077 | SHEET 1 | OF 1 | REV 1 |

8

7

6

5

Format: generic_m03.au_r1.frm 4

Template: tec_generic_a3.metric.au_r1.drw 3

Dwg No from Pl Mod Fam Tbl: 2 AU35077

1