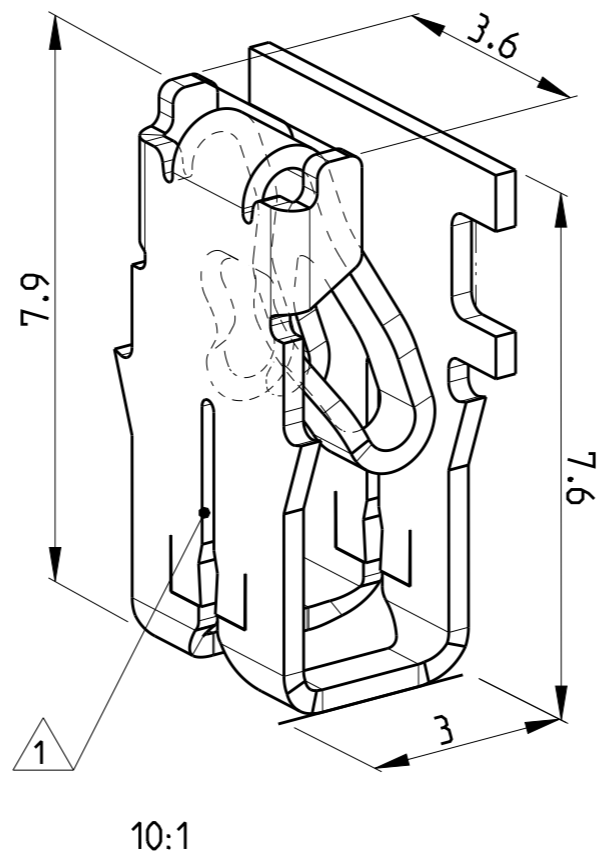
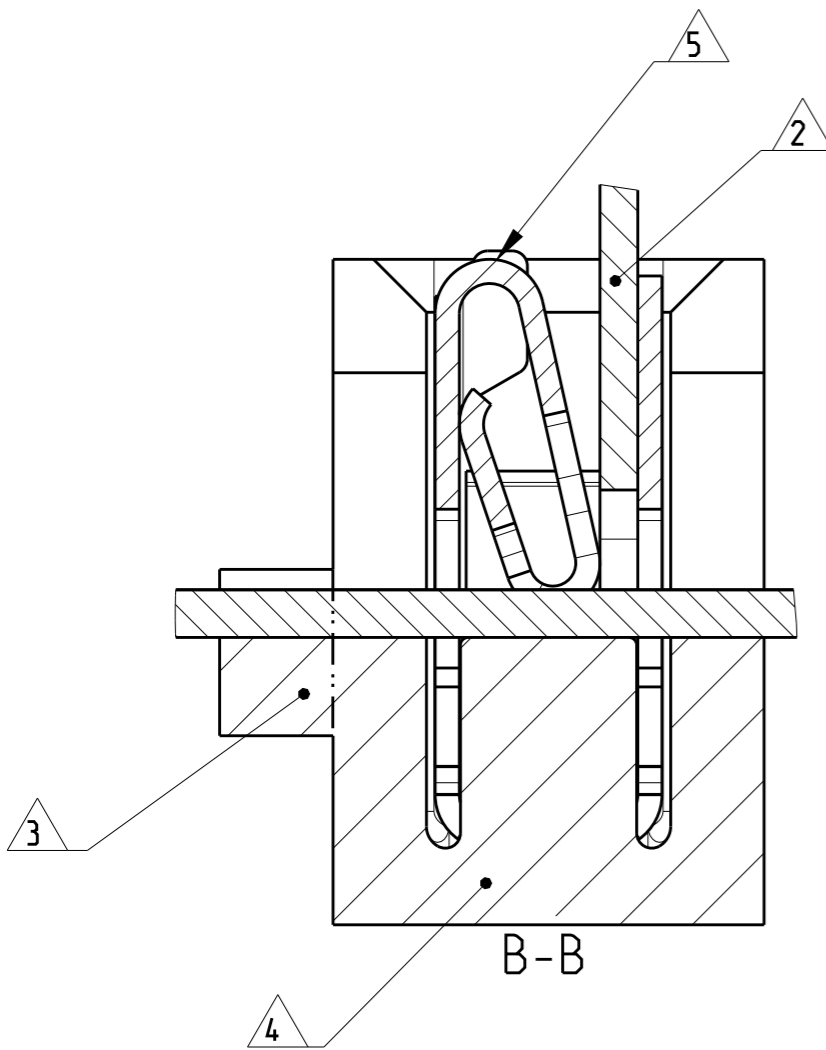
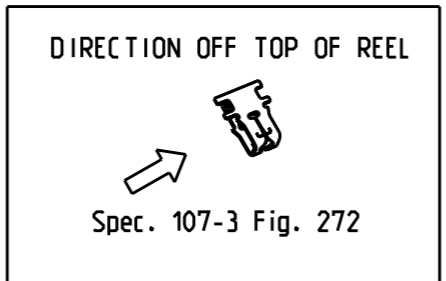


LOC	DIST	REVISIONS					
		P	LTR	DESCRIPTION	DATE	DWN	APVD
IR	-		C4	REVISED PER ECO-09-027197	25DEC09	KK	AEG
			C5	POST TIN VERSION ADDED	20MAR2012	PKS	RRP
			C6	REVISED PER ECR-19-015041	06NOV2019	PC	MB



- 1 △ SLOT ACCEPTS:
MAGNET WIRE Ø 0.85.....1.12mm
Kontakt geeignet fuer Lackdraht Ø 0.85.....1.12 mm
- 2 △ POKE IN TAB TERMINAL 3.4x0.5mm
Poke in Flachstecker 3.4x0.5mm
- 3 △ AREA WILL BE CUT BY TERMINATION
Bereich wird beim Kontaktieren abgetrennt
- 4 △ CAVITY ACCORDING TO DWG. 411-18512
Kontakt Kammer nach Zchnng. 411-18512
- 5 △ IDENTIFICATION NO. FOR MAGNET WIRE RANGE (24)
Kennziffer fuer Lackdrahtbereich (24)
- 6 △ OBSOLETE PARTS: OBSOLETE CIS STREAMLINING
PER D.RENAUD/D.SINISI
- 7 REELED WITH INTERLEAVE PAPER.
ABGEWICKELT MIT INTERLEAVE-PAPIER.

	2-964341-2	A	-	CuNiSi	TIN PLATED	MAG MATE LEAF TERMINAL	-
	964341-3	B	-	CuZn	PRE TINNED	MAG MATE LEAF TERMINAL	-
	964341-2	B	-	CuNiSi	PRE TINNED	MAG MATE LEAF TERMINAL	-
6 △ OBSOLETE	964341-1	B	-	CuNiSi	BLANK	MAG MATE LEAF TERMINAL	-
	PART NO	REV.	PCS.	MATERIAL	SURFACE COLOUR	DESCRIPTION	ITEM NO



THIS DRAWING IS A CONTROLLED DOCUMENT.		DWN H. Ballmert 06-02-04	TE Connectivity	
		CHK H. Ploesser 06-02-04		
DIMENSIONS: mm		TOLERANCES UNLESS OTHERWISE SPECIFIED:		NAME MAG MATE LEAF TERMINAL MARK II -
		0 PLC ±0.2 mm 1 PLC ±0.2 mm 2 PLC ±0.2 mm 3 PLC ±0.2 mm 4 PLC ±0.2 mm ANGLES ±1°		
MATERIAL SEE TABLE		FINISH SEE TABLE		PRODUCT SPEC 108-2012 APPLICATION SPEC 114-2046 WEIGHT -
		CUSTOMER DRAWING		SIZE A3 CAGE CODE 00779 DRAWING NO C-964341 RESTRICTED TO
		SCALE 10:1		SHEET 1 OF 1 REV C6