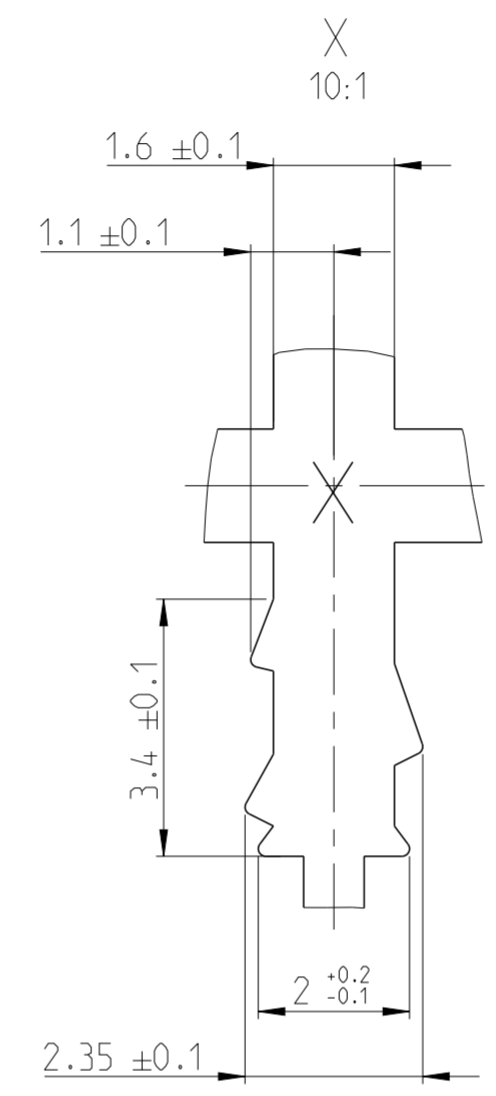
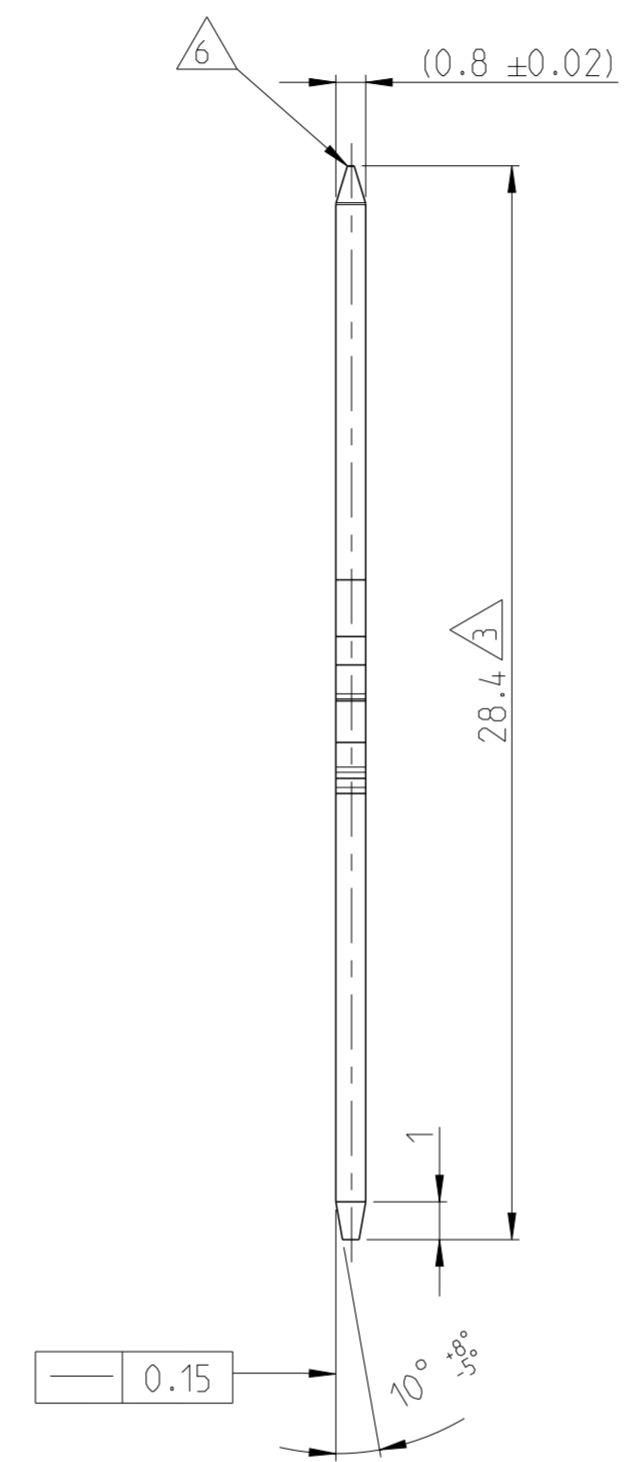
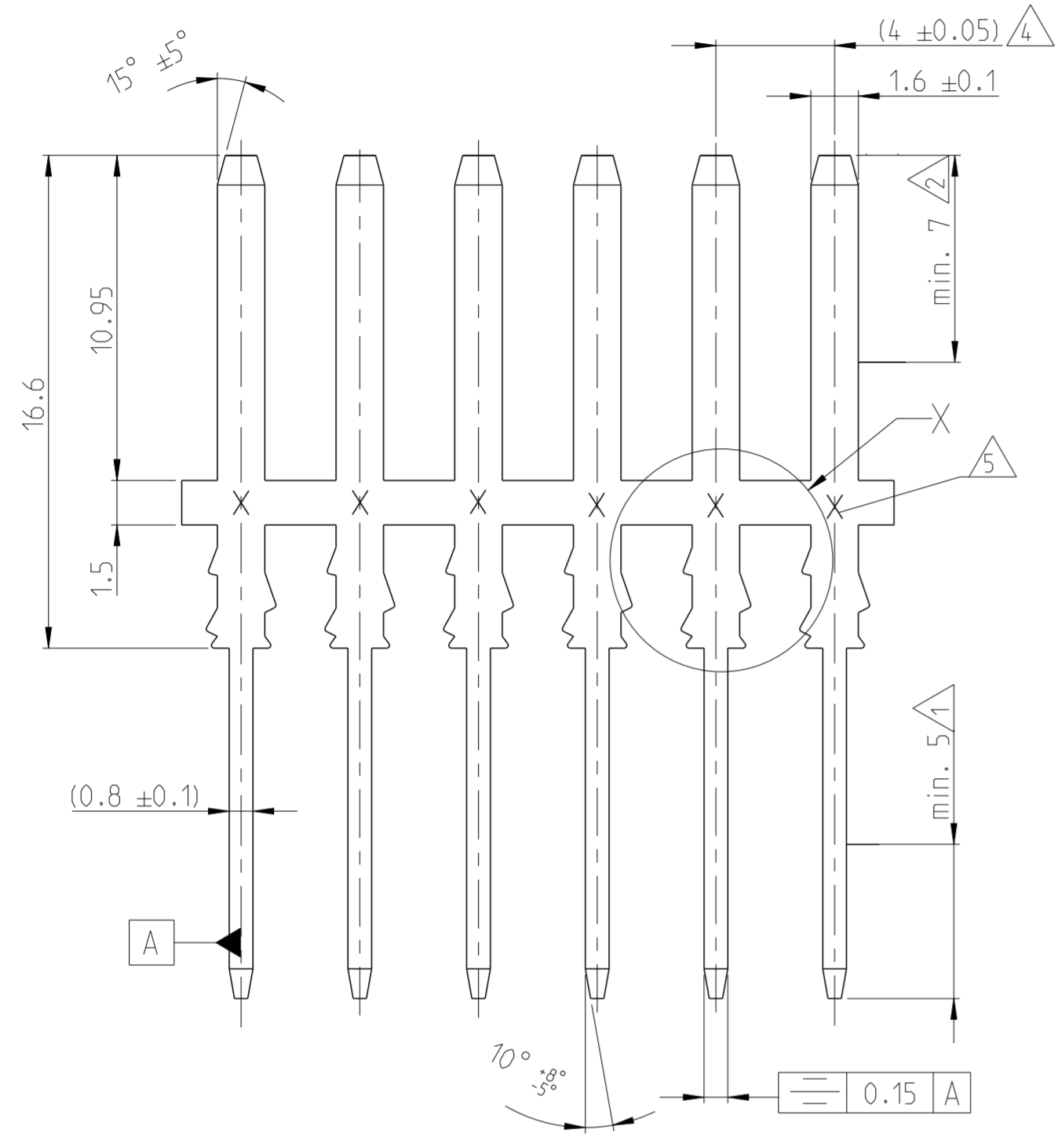
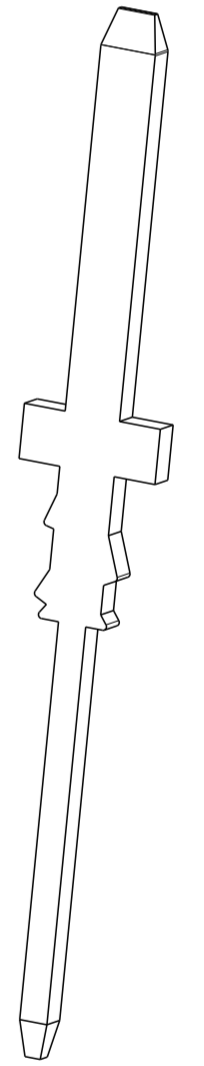


THIS DRAWING IS UNPUBLISHED. RELEASED FOR PUBLICATION 2015
 © COPYRIGHT 2015 TE Connectivity Germany GmbH ALL RIGHTS RESERVED.

REVISIONS				
P	LTR	DESCRIPTION	DATE	APVD
C		NEW DRAWING CREATED	21MAR2016	HO. EDER



- NOTES
Bemerkung
- 1 6-10 µm Sn
6-10 µm Sn
 - 2 1.0-1.5 µm Au
1.0-1.5 µm Au
 - 3 1.0-2.5 µm Ni
1.0-2.5 µm Ni
 - 4 PITCH DIMENSION TOLERANCES PER 30 TAB'S ± 0.2
Rastermass Toleranz pro 30 Kontakte ± 0.2
 - 5 OPTIONAL: STAMPING MARK TOP "X" OR "-"
Stanzseitenkennzeichnung oben "X" oder "-"
 - 6 NO SHARP EDGES PERMITTED
Keine scharfen Kanten erlaubt



2 + 1 OVER 3	CuZn30 (TEC-100-221)	1-963856-9	C
FINISH	MATERIAL	PART NO	REV

THIS DRAWING IS A CONTROLLED DOCUMENT.		DWN M. Homolka 08MAR2016	TE Connectivity	
DIMENSIONS: mm		CHK M. Eder 09MAR2016		
TOLERANCES UNLESS OTHERWISE SPECIFIED:		NAME TAB 1.6x0.8		
0 PLC	±0.2	PRODUCT SPEC		
1 PLC		APPLICATION SPEC		
2 PLC		SIZE	CAGE CODE	DRAWING NO
3 PLC		A2	00779	C-963856
4 PLC	±2°	RESTRICTED TO		
ANGLES		WEIGHT		
FINISH		CUSTOMER DRAWING		
		SCALE 5:1		SHEET 1 OF 1
				REV C