

4

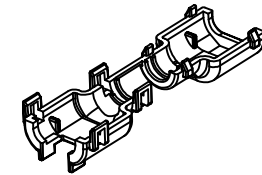
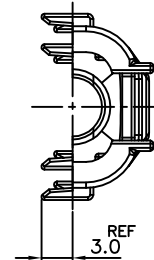
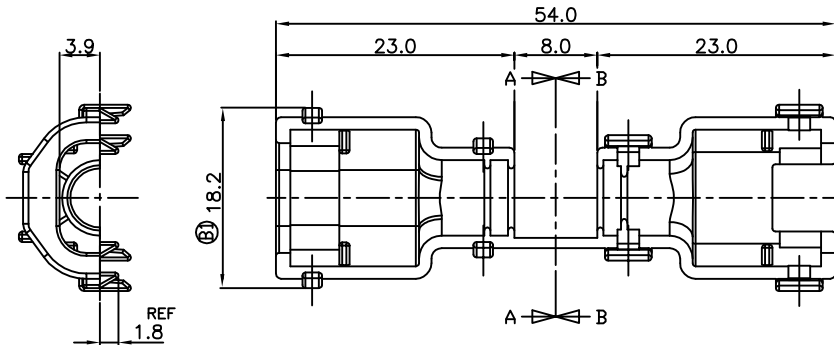
3

2

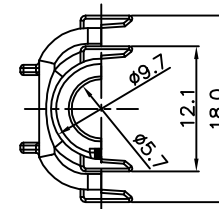
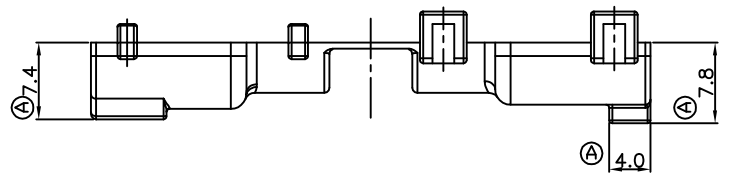
1

THIS DRAWING IS UNPUBLISHED. RELEASED FOR PUBLICATION
© COPYRIGHT BY TYCO ELECTRONICS CORPORATION. ALL RIGHTS RESERVED.

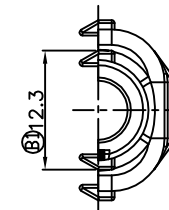
| LOC | DIST | REVISIONS | | | | | |
|-----|------|-----------|-----|------------------------|------------|-----|------|
| DS | | P | LTR | DESCRIPTION | DATE | DWN | APVD |
| | | | A | REVISED<FC00-0089-04> | 28/MAY/04 | YD. | CS |
| | | | B | REVISED<ECR-06-020553> | 12/SEP/06 | BH | JK |
| | | | B1 | REVISED<ECR-17-010113> | 12/JULY/17 | YJ | KT |



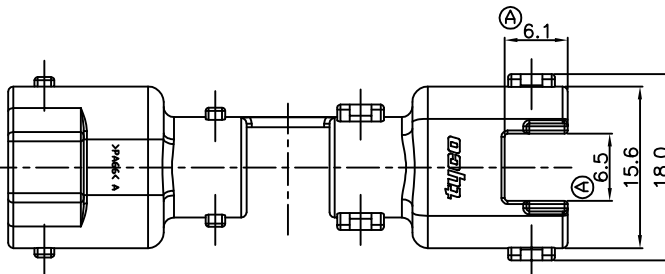
3D VIEW<SCALE 1:1>



SECTION A-A



SECTION B-B



NOTE

1. WARP IS 0.5 MAX. AND FLASH IS 0.3 MAX.
2. APPLICABLE CONNECTOR : 936527
3. APPLICABLE CORRUGATOR DIAMETER : $\phi 5.0$

| | | | |
|------------------|-----------|---|-------------------------------|
| ② | NYLON 66 | 936685-2 | BLACK |
| | MATERIAL | PART NUMBER | COLOR |
| | | AMP KOREA, kyungsan, korea | |
| | | NAME COVER FOR 025 SEALED PLUG 3P ($\phi 5$) | |
| SIZE | CAGE CODE | DRAWING NO | RESTRICTED TO |
| A3 | 00779 | C= 936685 | |
| CUSTOMER DRAWING | | | SCALE 2/1 SHEET 1 OF 1 REV B1 |

| | | |
|---|--|------------------|
| <small>THIS DRAWING IS A CONTROLLED DOCUMENT FOR TYCO ELECTRONICS CORPORATION IT IS SUBJECT TO CHANGE AND THE CONTROLLING ENGINEERING ORGANIZATION SHOULD BE CONTACTED FOR THE LATEST REVISION.</small> | | DWN : YD LEE |
| DIMENSIONS: mm | | CHK : BH JANG |
| 3rd ANGLE PROJECTION | | APVD : CS LEE |
| MATERIAL SEE TABLE | | PRODUCT SPEC |
| COLOR SEE TABLE | | APPLICATION SPEC |
| | | WEIGHT |
| | | CUSTOMER DRAWING |