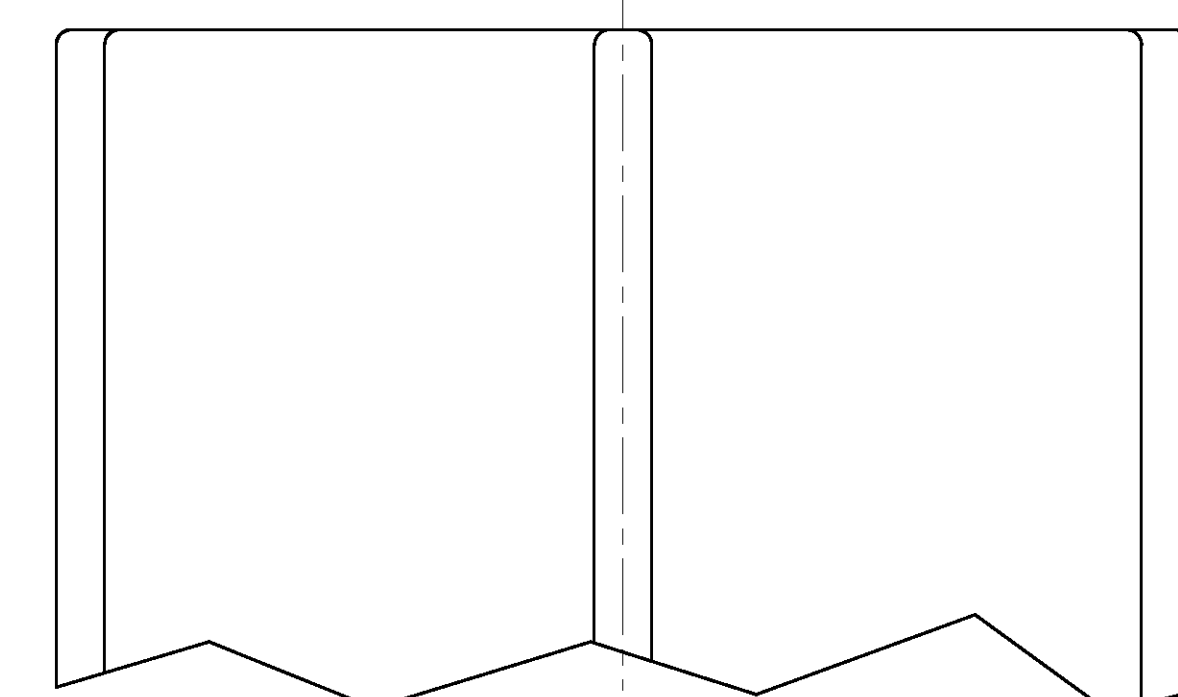
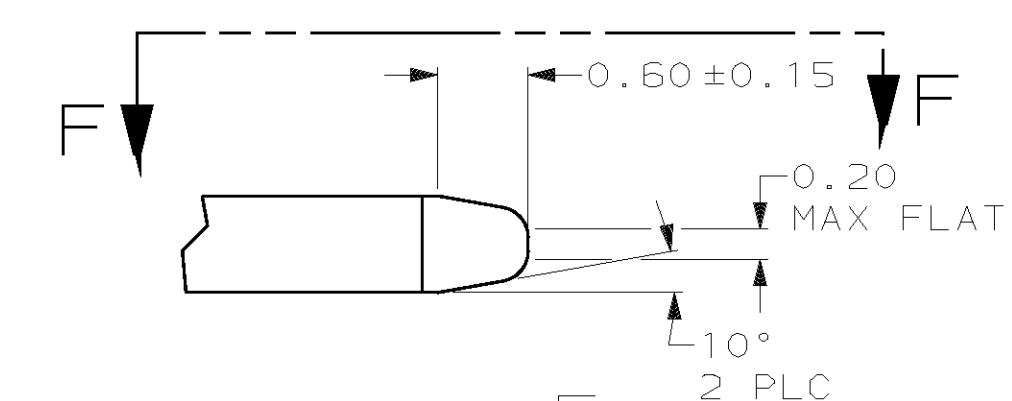
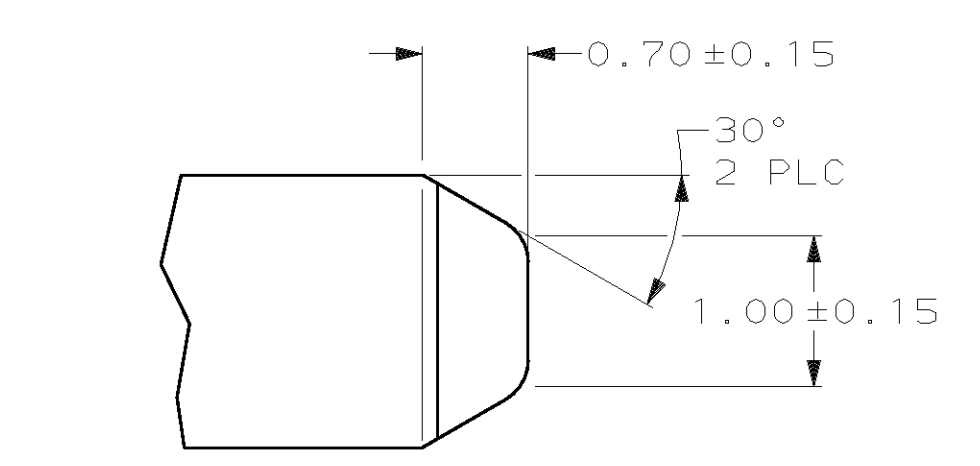
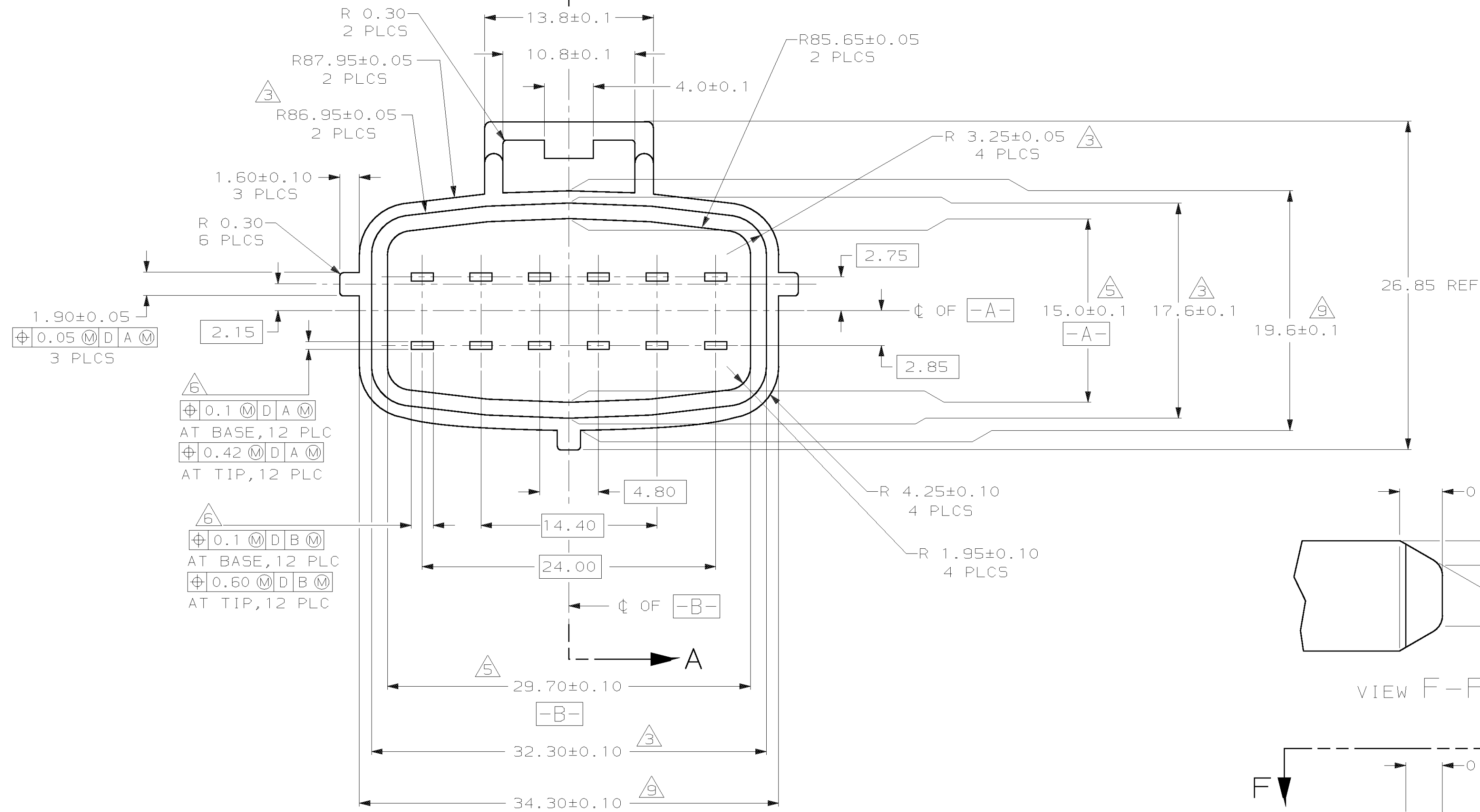
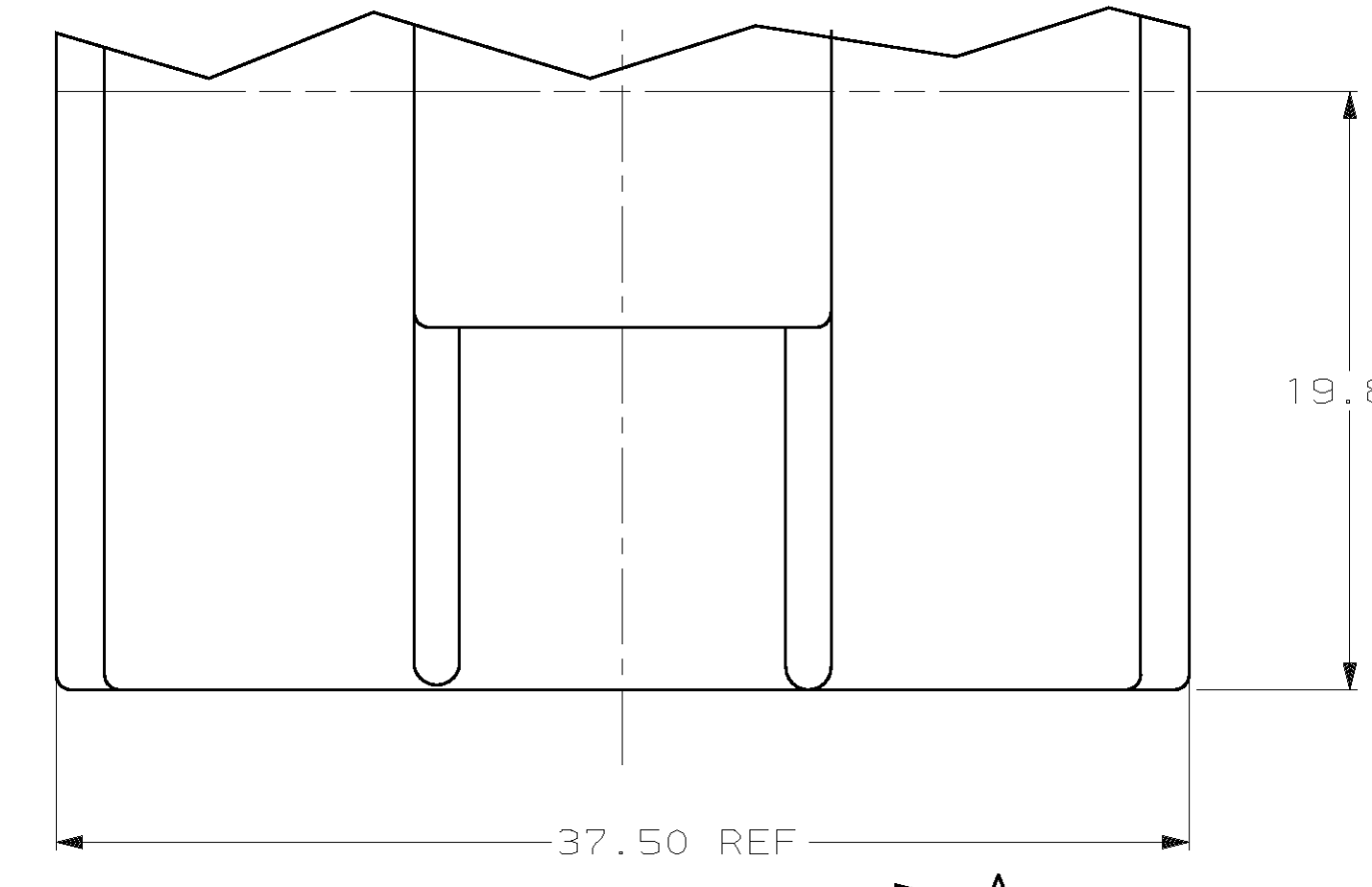
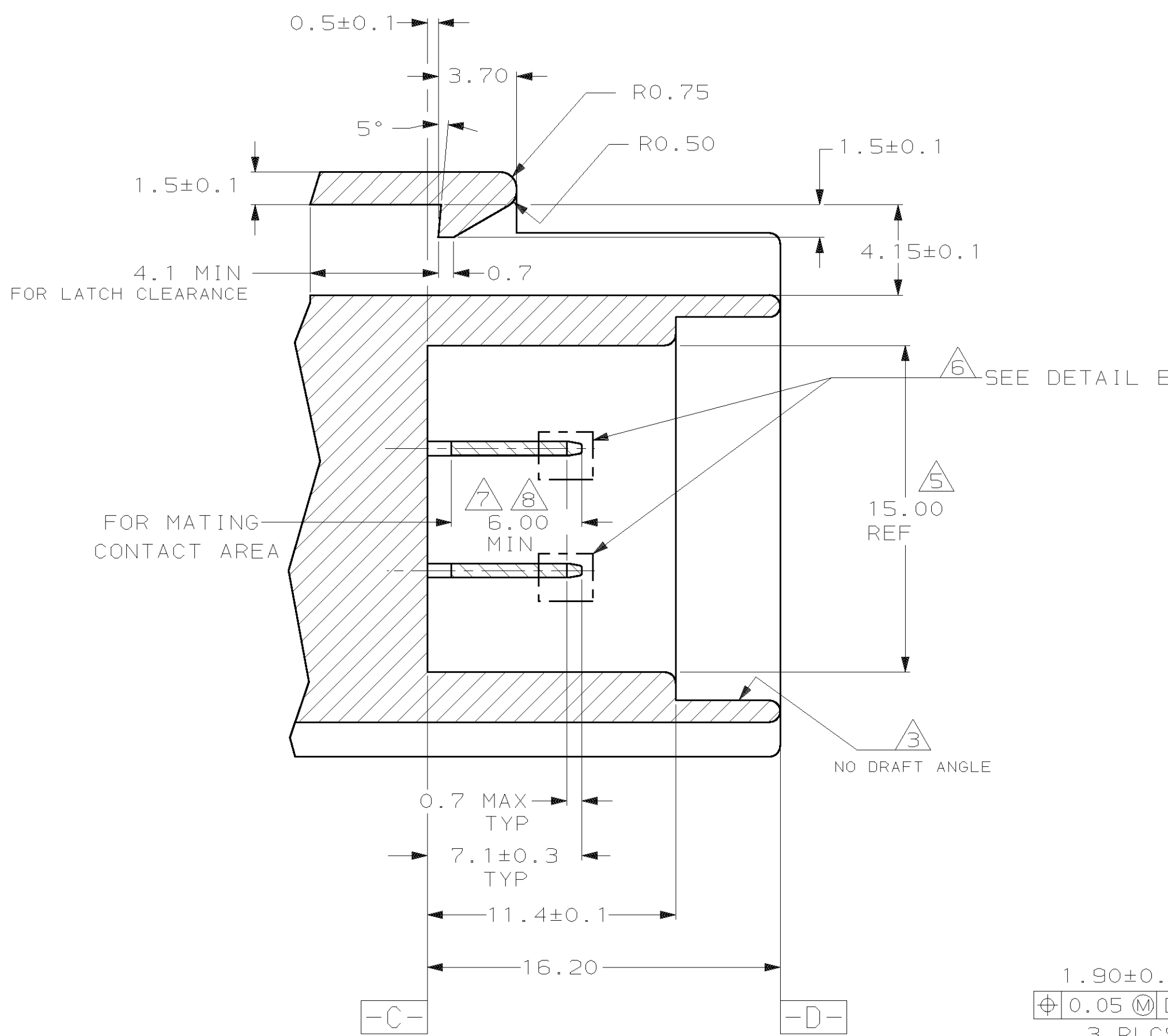


LOC	DIST	P	F	ZONE	LTR	REVISIONS	DATE	APPD
G	00					O INITIAL RELEASE		
						A 0.00070 WAS 0.00127	02/12/97	KW/EO
						B REV PER ECN 98-4072-025	05/08/98	MM



- NOTES
1. 1.2° MAX DRAFT ANGLE, EXCEPT AS INDICATED.
 2. WARPAGE 0.10 MAX, FLASH 0.15 MAX.
 3. SURFACE DEFECTS ARE NOT ACCEPTABLE AS FOLLOWS: HAIRCRAKS, STAINS, SCORES, TOOL LINES AND WITNESS LINES.
 4. ALL RADII ARE 0.50, EXCEPT AS INDICATED.
 5. DIMENSION TO BE MAINTAINED OVER 3.00 LENGTH FROM [-C-] TOWARDS [-D-].
 6. 0.640±0.025 THICK X 1.8±0.1 WIDE CONTACTS LOCATED AS SHOWN, 12 PLACES. BURR FREE LEAD-IN TO PREVENT STUBBING OR SCRAPING.
 7. FINISH: 0.0020 MIN THICK NICKEL UNDERPLATE WITH EITHER 0.00076 MIN THICK GOLD OR 0.0038/0.0076 THICK TIN IN MATING AREA WITH NO EXPOSED EDGES.
 8. NO TOOL MARKS IN THIS AREA.
 9. DIMENSION TO BE MAINTAINED OVER 2.00 LENGTH FROM [-D-] TOWARDS [-C-].

THIS DRAWING DEFINES THE DIMENSIONAL INTERFACE REQUIREMENTS NECESSARY FOR DEVELOPING AN INSERT MOLDED CONNECTION TO MATE WITH SEALED PLUG CONNECTORS PROVIDED BY AMP INCORPORATED.

THIS DRAWING IS A CONTROLLED DOCUMENT FOR AMP INCORPORATED. IT IS SUBJECT TO CHANGE AND THE CONTROLLING ENGINEERING ORGANIZATION SHOULD BE CONTACTED FOR THE LATEST REVISION.

DO NOT SCALE PRINT, UNLESS SPECIFIED		DR 1/4/94	93-4072-006-1		
DIMENSIONS IN mm		KD LYTLE	PART NO		
TOLERANCES - ON :		CHK 1/8/94	AMP Incorporated Harrisburg, PA 17105-3608		
2 PLC DEC ± 0.15		JP KUNKLE	NAME		
3 PLC DEC ±		APPD -	INTERFACE DRAWING, 12 POSITION, E-J II+ CONNECTOR		
ANGLES ± 1°		APPD -	SIZE		
MATERIAL		PRODUCT SPEC	D	00779	C-93-4072-006
APPROPRIATE MATERIAL FOR INDIVIDUAL APPLICATION		APPD -	SCALE	4:1	DRAWING NO
FINISH		APPD -			93-4072-006
		APPLICATION SPEC			SHEET
		APPD -			1 OF 1
		PRODUCT SPEC			CUSTOMER DRAWING
		APPD -			