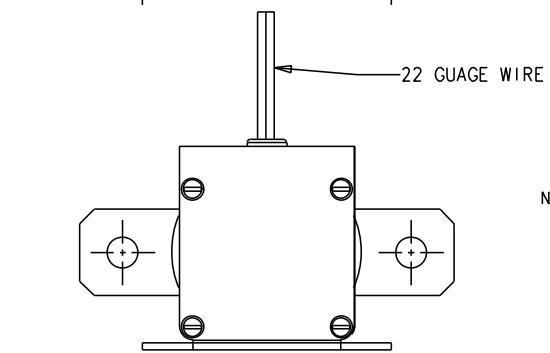
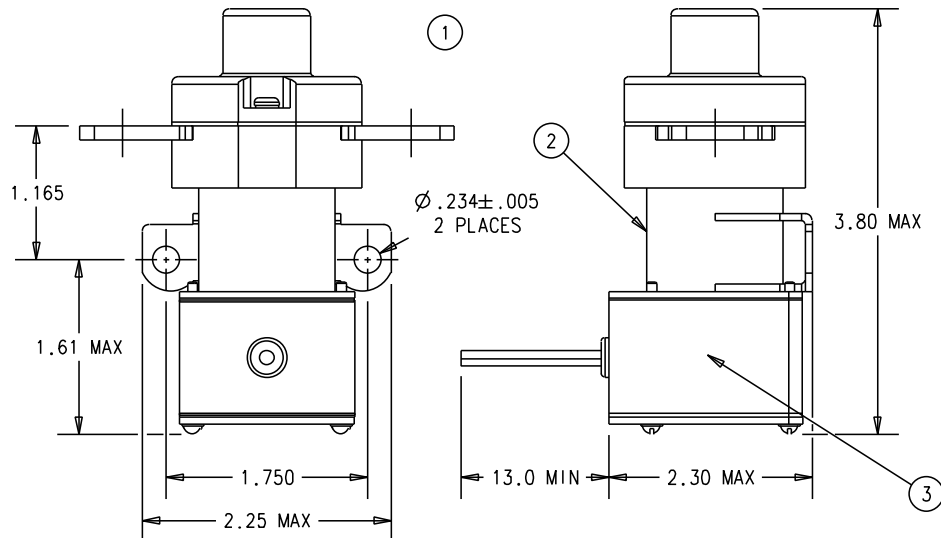
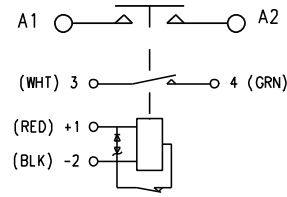
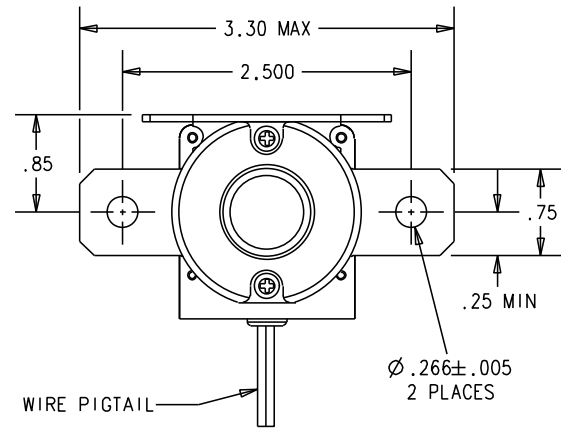


K400A4C REV. B

REV.	DESCRIPTION	RELEASED	APPROVED
A	06-012882 RELEASE TO PRODUCTION	06/05/10	CB
B	06-027501 MAX WEIGHT WAS .60 LBS	06/10/12	CB



CONSTRUCTION
 MAIN CONTACTS
 CONFIGURATION SPST N.O. (DOUBLE BREAK)
 VOLTAGE 28 VDC
 CURRENT
 RESISTIVE 400 AMPS
 OVERLOAD 450 AMPS FOR 5 MIN
 1000 AMPS FOR 10 SEC.
 INRUSH 1500 AMPS
 RUPTURE 4000 AMPS
 MOTOR 1875 AMPS FOR 0 TO 5 SEC.
 1700 AMPS FOR 5 TO 10 SEC.
 1500 AMPS FOR 10 TO 15 SEC.
 1200 AMPS FOR 15 TO 20 SEC.
 1000 AMPS FOR 20 TO 25 SEC.
 750 AMPS FOR 25 TO 30 SEC.
 500 AMPS FOR 30 TO 90 SEC.

AUXILIARY CONTACTS
 CONFIGURATION 1 N.O.
 VOLTAGE 28 VDC
 CURRENT RESISTIVE 1 AMP

COIL DATA
 DUTY CYCLE CONTINUOUS (ECONOMIZED)
 MAX OPERATE VOLTAGE 32 VDC
 NOM OPERATE VOLTAGE 28 VDC
 MAX PICKUP VOLTAGE 18 VDC MAX
 DROPOUT VOLTAGE 9 VDC MAX
 COIL CURRENT 6 AMP MAX AT 28 VDC
 INRUSH 400 mA MAX AT 28 VDC
 HOLD

ENVIRONMENTAL DATA
 TEMPERATURE -55°C TO 85°C
 ALTITUDE 50,000 FEET

LIFE ELECTRICAL 50,000 CYCLES MIN.
 LIFE MECHANICAL 100,000 CYCLES MIN.
 WEIGHT MAX .75 LBS

- NOTES:
 1. AUXILIARY CONTACTS ARE GOLD PLATED.
 2. COIL TRANSIENT VOLTAGE LIMITED TO ±50 VOLTS REFERENCED TO ZERO VOLTS FOR 1 SECOND.

3	1	44900-012	SCHEMATIC DIAGRAM			1-1616958-5	
2	1	44899-018	PLATE - NAME			1616958-7	
1	1	47619-050	PRIMARY ASSEMBLY			9-1616957-6	
FIND NO	QTY RECD	PART OR IDENTIFYING NO	NOMENCLATURE OR DESCRIPTION	DRAWING OR SPECIFICATION	FSOM NO	TYCO PART NO	MATERIAL OR NOTE
UNLESS OTHERWISE SPECIFIED DIMENSIONS ARE IN INCHES TOLERANCES ON							
2 PL DEC, 3 PL DEC, ANGLES					Division 175 N. DIAMOND STREET MANSFIELD, OHIO 44902		
± .06	± .010	± 1°	DR BY	RSS	06/05/19	CONTACTOR - SPST N.O. DB 400 AMP, 28 VDC	
			CHK BY	CB	06/05/19		
			ENGR	RSS	06/10/12		
			MFG	MB	06/06/01		
SIZE		CODE IDENT		DWG NO.		K400A4C	
A		74063				REF TYCO PN 9-1616957-6	
SCALE 2:3			SHEET 1 OF 1				