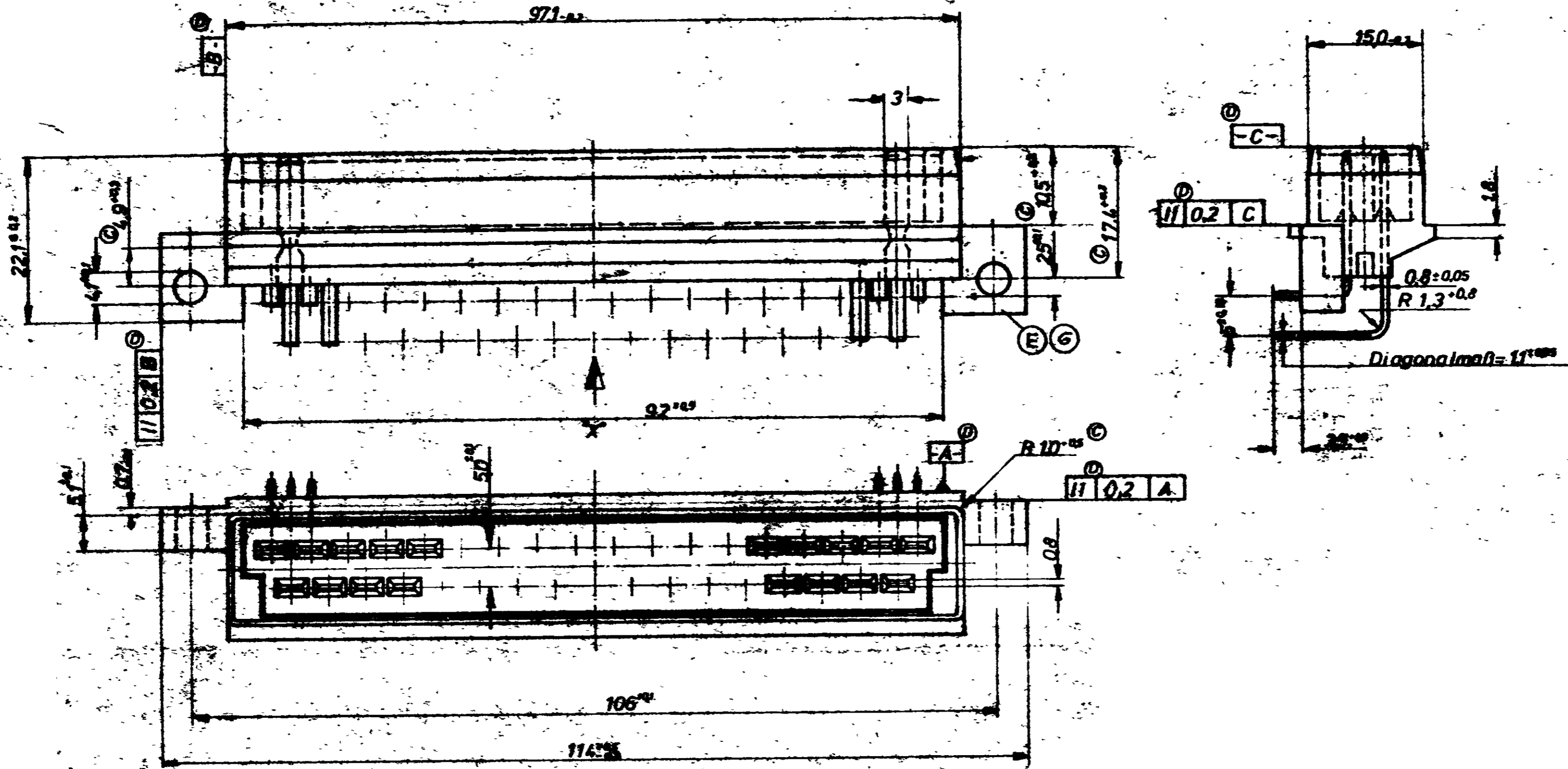
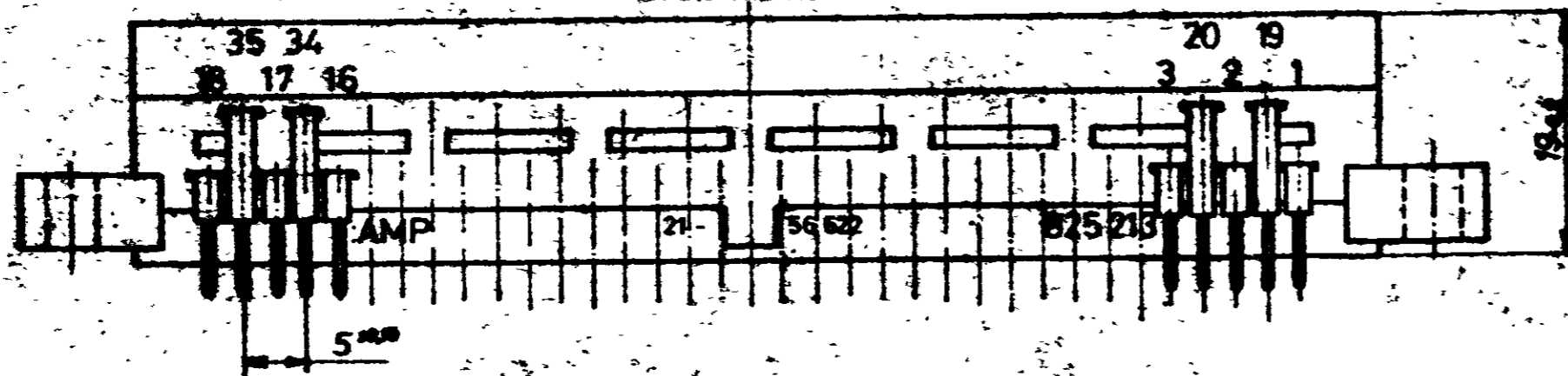


European Projection



Ansicht "X"



CUSTOMER COPY
REFERENCE ONLY

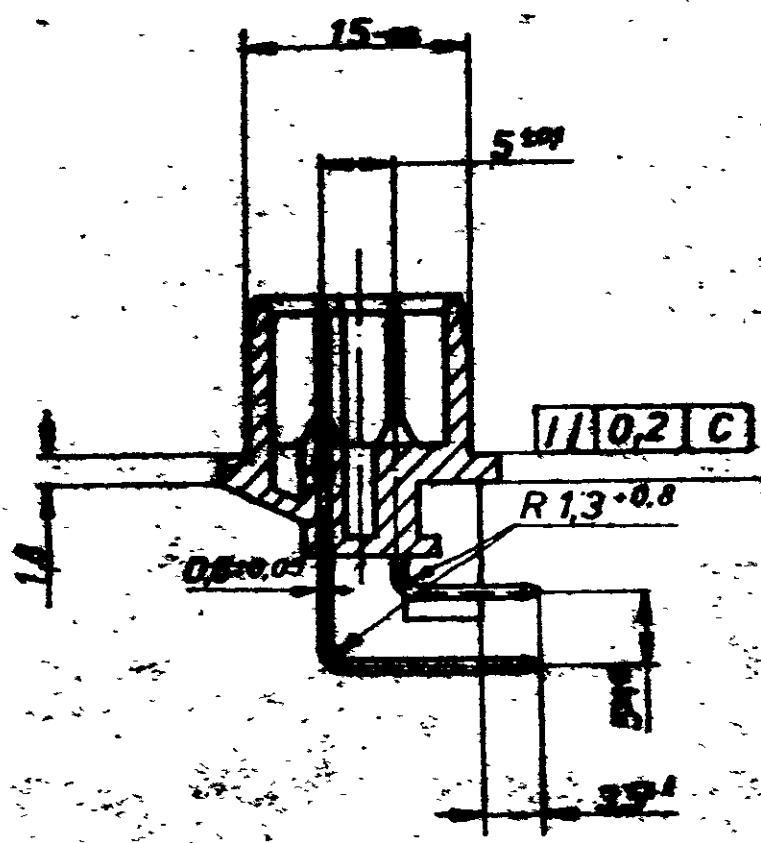
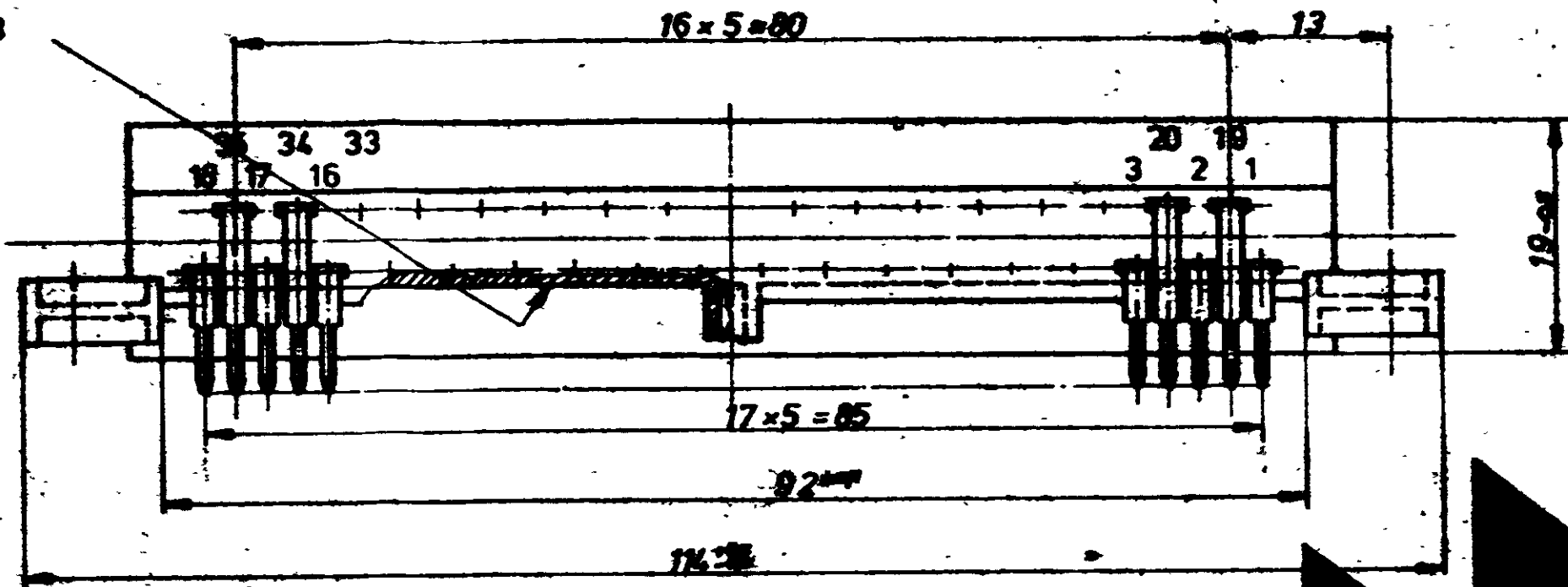
OBSOLETE	825213-3	PA6.6 GV 13	schwarz	Ms.verzinkt
	825213-2	PA6.6 GV 13	schwarz	Ms.verzinkt
	825213-1	PA6.6GV3SE0	schwarz	Ms.verzinkt
OBSOLETE	1-825213-5	Polyamid 6.6 GV 13	schwarz	Ms.verzinkt
	Bestell-Nr.	Material	Farbe	Messer

Maße ohne Toleranzangabe: 0.4

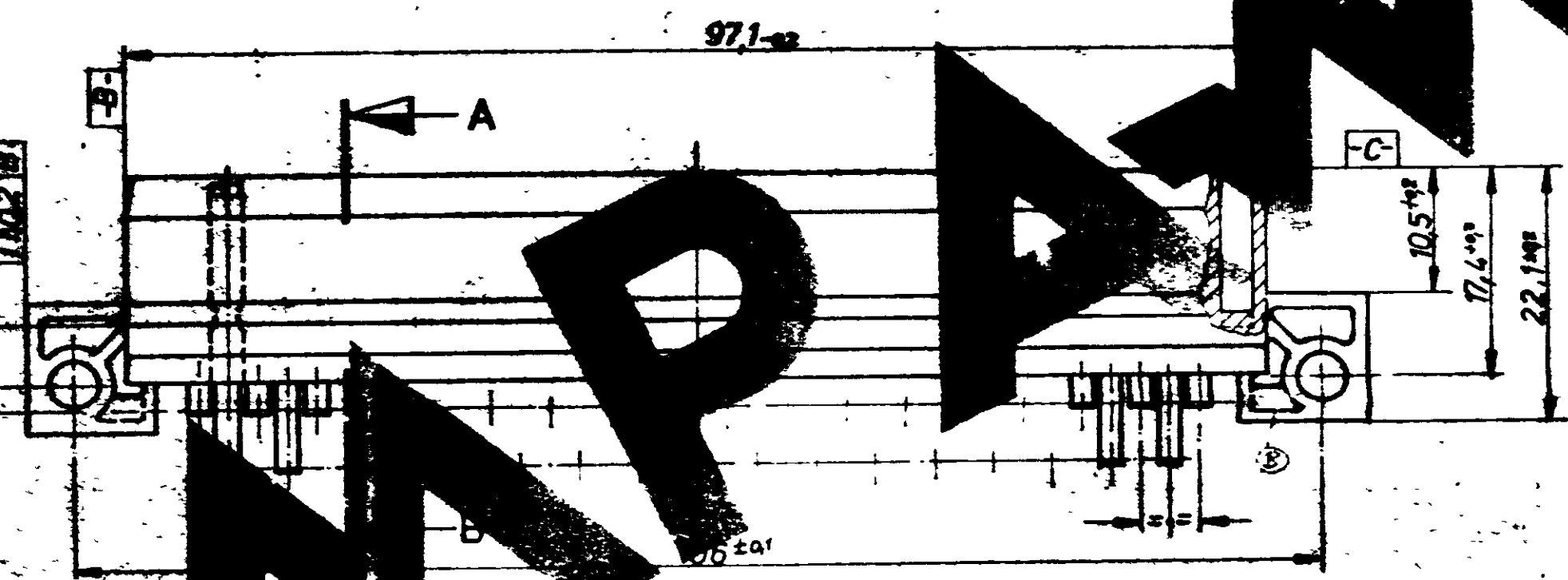
L2 ECR-20-011538		KG	18AUG 2001			REVISIONS RECORD		DESCRIPTION		NUMBER NAME 822- 12.274 TYPE		TE Connectivity 825 213 L2	
L1 REVISED PER ECO-11-005294		RK	14APR 11							2:1		35 pol. Messerleiste	
REVISION NUMBER		DATE	LTR	REVISION RECORD		SCALE		PART		DESCRIPTION		PAGE 1 of 2	

Index	Änderung	Tag	Name
	SEE SHEET 1		

Werkzeug-Nr. 21-57063



Schnitt A-B



AMP 825213

AMP

2-825213-3	PA 6.6GV13	schwarz	Cu Zn 30	Au galv.
2-825213-2	PA 6.6GV13	schwarz	Cu Zn 30	Ag galv.
2-825213-1	PA66 GV35 SED	schwarz	Cu Zn 30	Sn galv.
2-825213-5	PA 6.6GV13	schwarz	Cu Zn 30	Sn galv.
Bestell-Nr.	Geht Material	Farbe	Messer Werkstoff	Oberfläche

Bestell-Nr.	Werkstoff	Oberfläche
17.11.01	15.3.82	

TE TE Connectivity

35pol. Messerleiste **K**

Bestell-Nr. **825 213** L2

Skizze Maßstab: ± 0.2 mm ± 1.5°

Vergrößerung: **C** 2 v. 2