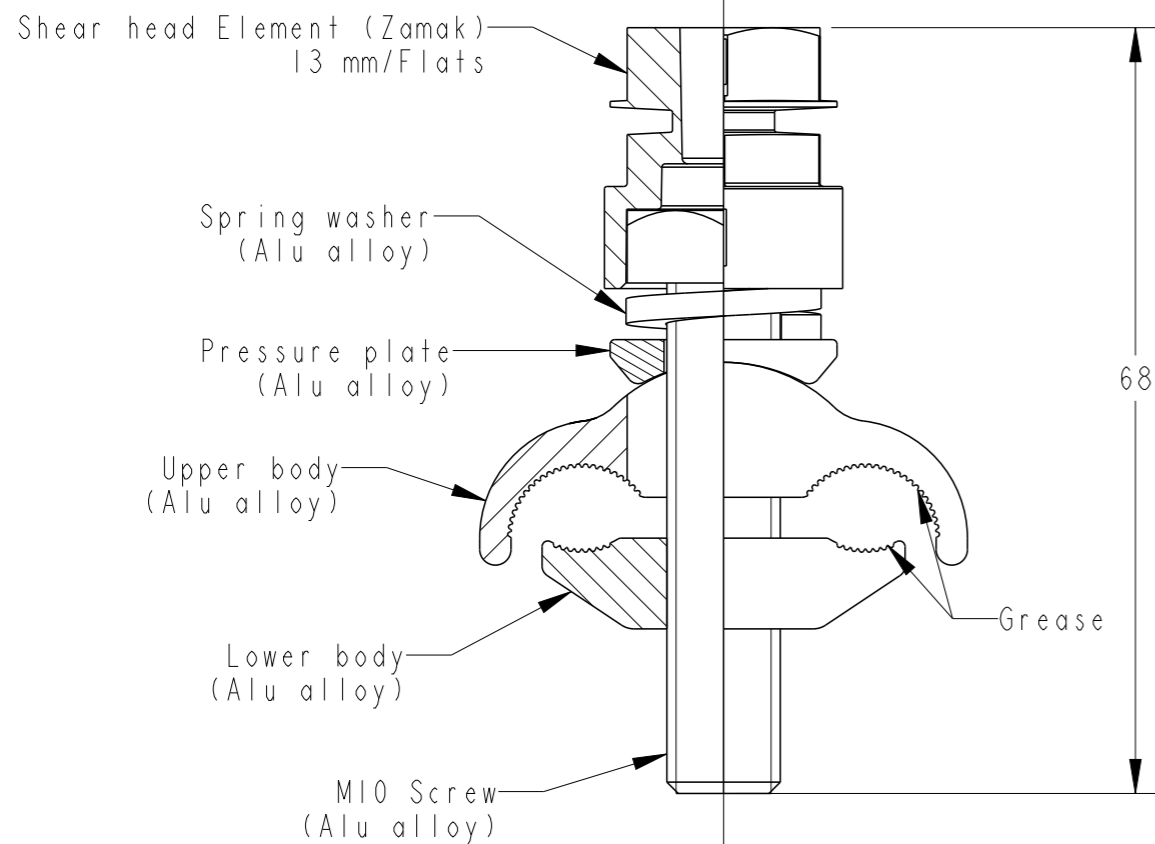
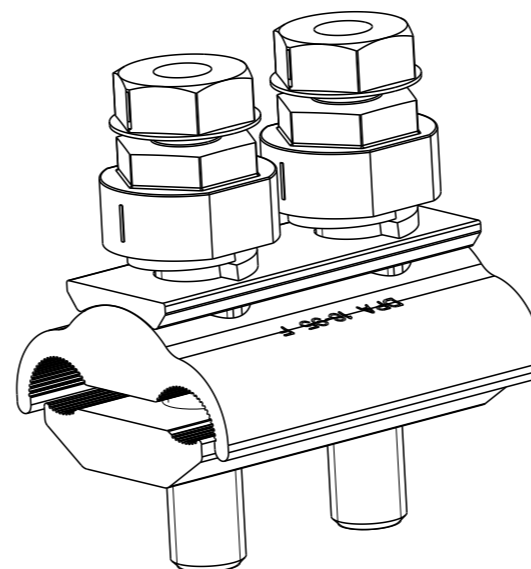


REVISIONS

P	LTR	DESCRIPTION	DATE	DWN	APVD
	A	INITIAL RELEASE	06MAY2021	SM	NA

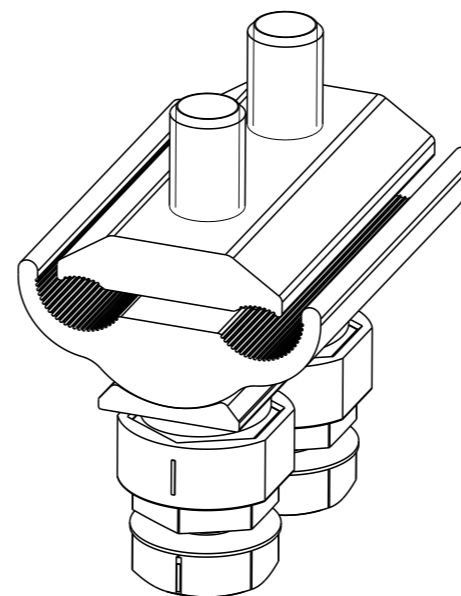
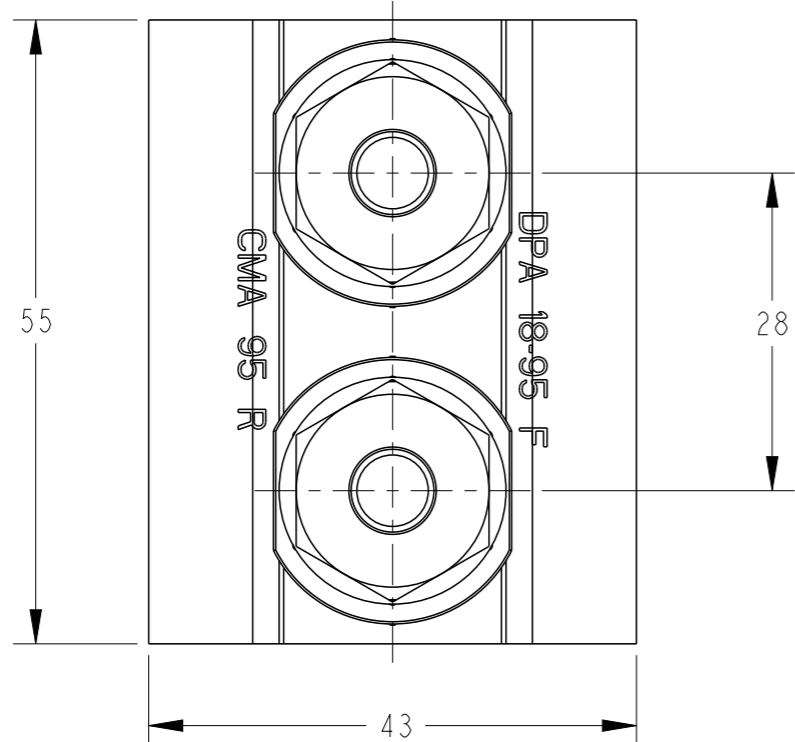


ECHELLE 1:1




Notes:

1. Nominal breaking torque: 22 N.m
2. Capacities: 22 to 93.3 mm² Main and Tap
3. Marking : Batch number (year and week of manufacturing)



ECHELLE 1:1

DPA 18-95 F / CMA 95R	709159-1
DESCRIPTION	TCPN

THIS DRAWING IS A CONTROLLED DOCUMENT.		DWN SATYA.M 06MAY2021	 TE Connectivity													
DIMENSIONS: mm		CHK L. JONATHAN 06MAY2021														
TOLERANCES UNLESS OTHERWISE SPECIFIED:		APVD N. ALMEDIA 06MAY2021	NAME DPA 18-95 F / CMA 95R													
<table border="1"> <tr><td>0 PLC</td><td>±-</td></tr> <tr><td>1 PLC</td><td>±-</td></tr> <tr><td>2 PLC</td><td>±-</td></tr> <tr><td>3 PLC</td><td>±-</td></tr> <tr><td>4 PLC</td><td>±-</td></tr> <tr><td>ANGLES</td><td>±-</td></tr> </table>		0 PLC	±-	1 PLC	±-	2 PLC	±-	3 PLC	±-	4 PLC	±-	ANGLES	±-	PRODUCT SPEC	RESTRICTED TO	
0 PLC	±-															
1 PLC	±-															
2 PLC	±-															
3 PLC	±-															
4 PLC	±-															
ANGLES	±-															
MATERIAL		APPLICATION SPEC	SIZE A3	CAGE CODE 00779												
FINISH		WEIGHT 124 g	DRAWING NO C=709159													
		CUSTOMER DRAWING	SCALE 3:2	SHEET 1 OF 1												
			REV A													