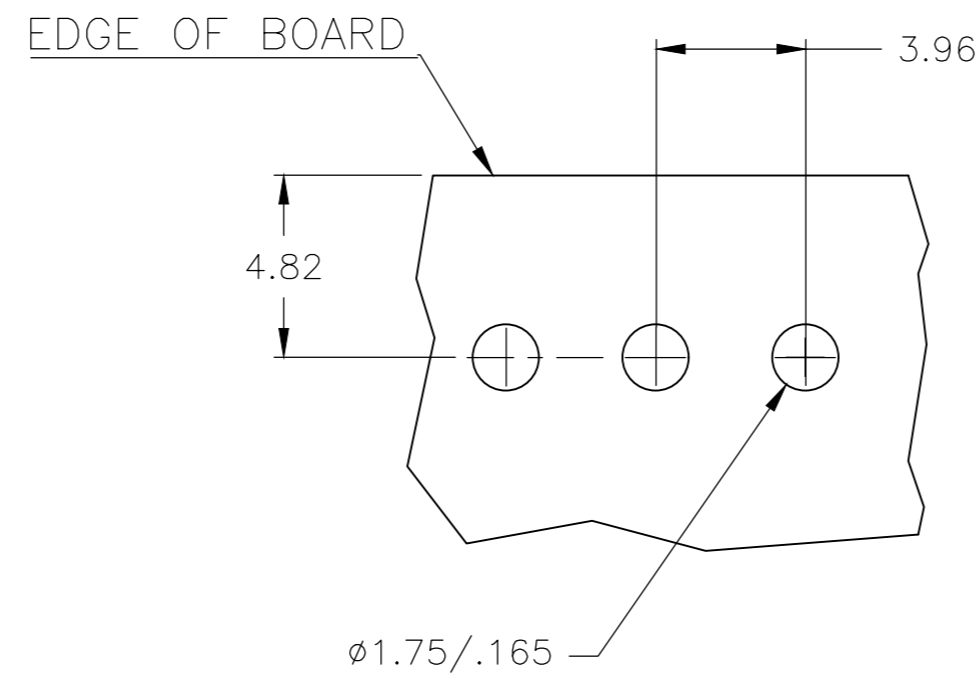
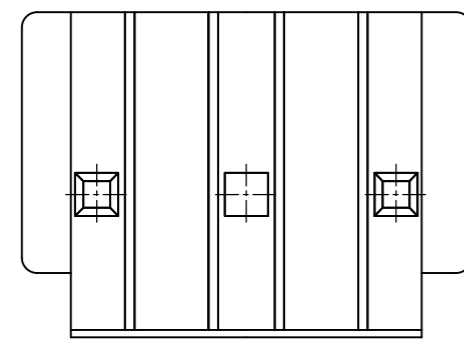
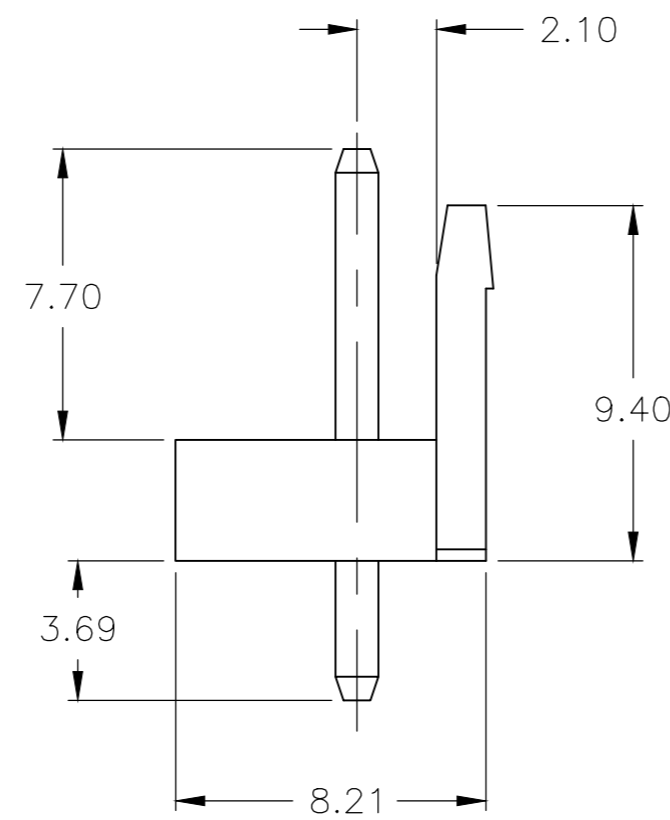
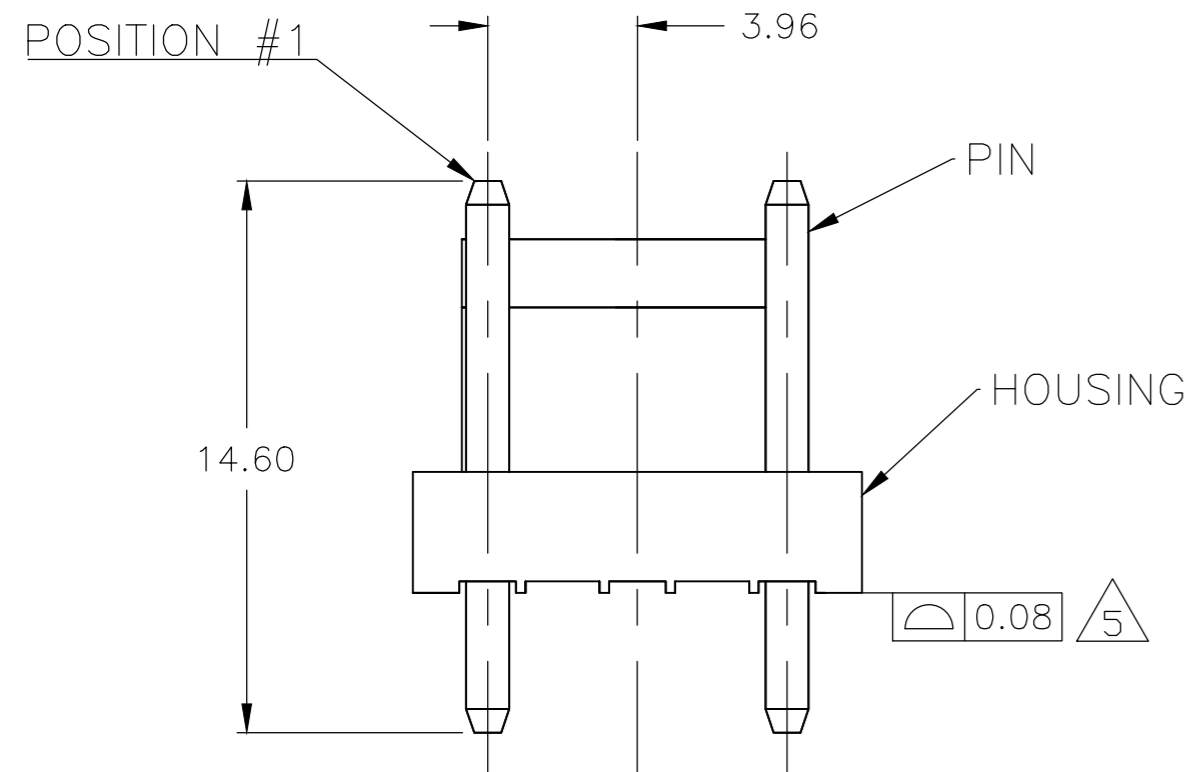
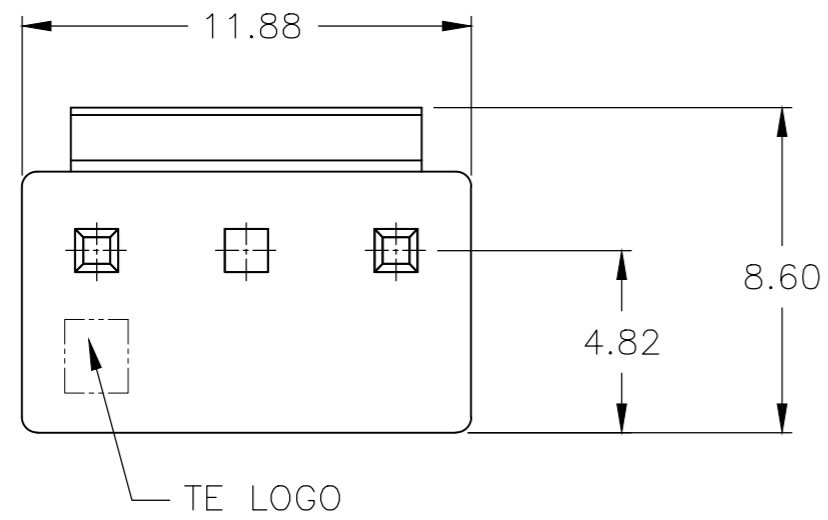


REVISIONS					
P	LTR	DESCRIPTION	DATE	DWN	APVD
	AF	REVISED PER ECO-19-013474	08JAN2020	WH	DZ



RECOMMENDED MOUNTING HOLE PATTERN FOR 1.6 THICK PC BOARD

- 1 HOUSING MATERIAL: NYLON, UL94 V0.
PIN MATERIAL: BRASS.
- 2 PIN PLATING: 0.003 [.000120] MIN TIN OVER 0.001 [.000039] NICKEL.
- 3 COMPLY WITH GLOW WIRE REQUIREMENTS FOR PARTS OF NON-METALLIC MATERIAL SUPPORTING A CURRENT-CARRYING CONNECTION DETAILED IN IEC 60335-1, SECTION 30 (GWT).
- 4 "O" WITH POST
"X" WITHOUT POST
- 5 PRODUCT BOW SHOULD MEET 0~0.08MM(INITIAL) AND 0~0.20MM(AFTER SOLDERABILITY)

0	X	0	3	NATURAL	7-1123724-2
3	2	1	NO. OF POSITIONS	COLOR	PART NUMBER
PIN POSITIONS					

THIS DRAWING IS A CONTROLLED DOCUMENT.		DWN B WAYNE 12NOV14	TE Connectivity		
DIMENSIONS: mm		CHK TOM MICHELUTTI 12NOV14	NAME TE Connectivity		
TOLERANCES UNLESS OTHERWISE SPECIFIED:		APVD TOM MICHELUTTI 12NOV14	PRODUCT SPEC 108-5609		
0 PLC ± -		APPLICATION SPEC	SIZE A2	CAGE CODE 00779	DRAWING NO 7-1123724-2
1 PLC ± 0.5		WEIGHT -	SCALE N/A	SHEET 1 of 1	RESTRICTED TO -
2 PLC ± 0.30		MATERIAL 1	CUSTOMER DRAWING		
3 PLC ± -		FINISH 2	REV AF		
4 PLC ± -					
ANGLES ± 3°					