

| DESCRIPTION   | APPROVED/DATE      | REV |
|---------------|--------------------|-----|
|               | C. Westby 11-19-91 | 2   |
| ECO-09-026495 | AEG 10DEC09        | 3   |

SAFETY ORGANIZATION(S):

THIS FILTER HAS BEEN FORMALLY RECOGNIZED, CERTIFIED OR APPROVED BY THE LISTED AGENCY. THEREFORE, ALL TEST/REQUIREMENTS SPECIFIED IN THE LATEST REVISION OF THE FOLLOWING AGENCY STANDARDS HAVE BEEN MET:

UL RECOGNIZED UL 544  
 CSA CERTIFIED CSA 22.2, NO.0,0.4,8

OPERATING SPECIFICATIONS:

LINE VOLTAGE/CURRENT: 6 AMP., 120/250 VAC  
 LINE FREQUENCY: 50-60Hz  
 MAX. LEAKAGE CURRENT, EACH LINE TO GROUND: 2 μA @ 120VAC 60 Hz  
 5 μA @ 250VAC 50 Hz

OPERATING VOLTAGES:

6HJ4-4 100, 120, 220, 240 VAC  
 6HJ4-2 115, 230 VAC

OPERATING AMBIENT TEMP. RANGE:

-10°C TO +40°C @ RATED CURRENT, I<sub>r</sub>

IN AN AMBIENT, T<sub>a</sub>, HIGHER THAN 40°C, THE MAXIMUM OPERATING CURRENT, I<sub>o</sub>, IS AS FOLLOWS:

$$I_o = I_r \sqrt{\frac{85 - T_a}{45}}$$

RELIABILITY SPECIFICATIONS:

STORAGE TEMPERATURE: -40°C TO +85°C  
 HUMIDITY: 21 DAYS @ 40°C 95% RH  
 CURRENT OVERLOAD TEST: 6 TIMES RATED CURRENT FOR 8 SECONDS

TEST SPECIFICATIONS:

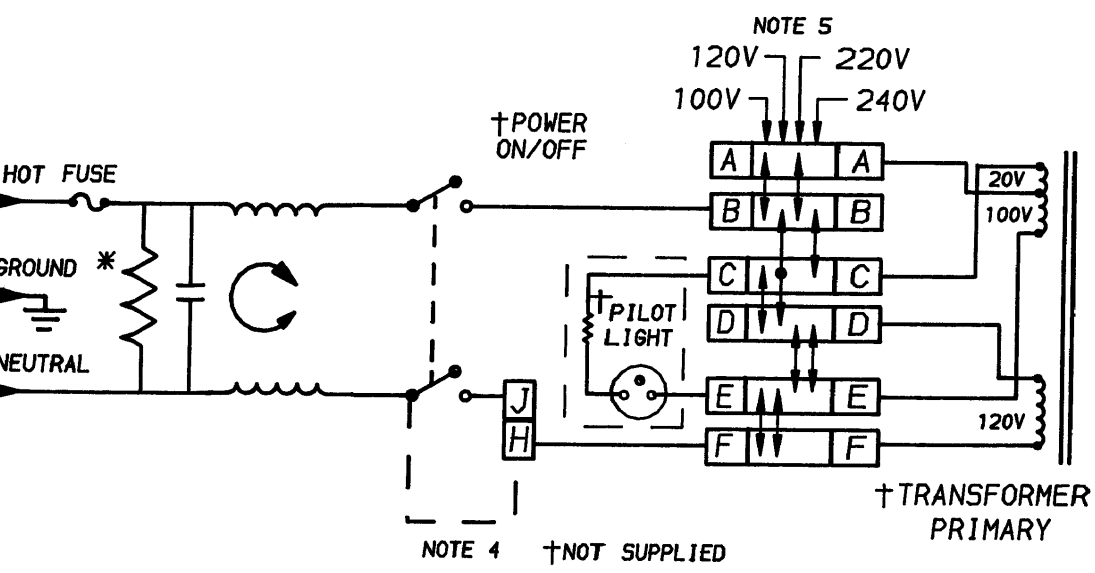
INDUCTANCE: .465 mH NOMINAL  
 CAPACITANCE: (MEASURED @ 1 KHz, 0.25 VAC MAX., 25°C ±1°C)  
 LINE TO LINE: .018 μF ±20%  
 DISCHARGE RESISTOR: 1.5 MΩ  
 LINE/GROUND AND LINE/LINE: 6000 MΩ (MIN) AT 100 VDC  
 INSULATION RESISTANCE (W/O DISCHARGE RESISTOR): 20°C AND 50% RH

RECOMMENDED RECEIVING INSPECTION HIPOT:

LINES TO GROUND: 2250 VDC FOR 1 MINUTE  
 LINE TO LINE: 1450 VDC FOR 1 MINUTE

FILTER APPROVAL:

THE BEST WAY TO SELECT AND QUALIFY A FILTER IS FOR YOUR ENGINEERING TO TEST THE UNIT IN YOUR EQUIPMENT.



NOTES:

- FUSE COVER DOOR SHOWN IN OPEN POSITION
- STANDARD UNITS MOUNT IN PANEL THICKNESS OF .060 - .090
- SPECIAL MOUNTING CLIPS SOLD SEPARATELY FOR PANEL THICKNESSES OF .105 - .125
- JUMPER REQUIRED IF ONLY SPST POWER SWITCH IS USED.
- USE ONLY 120V AND 240V POSITIONS FOR 6HJ4-2
- OBsolete PARTS: OBSOLETE CIS STREAMLINING PER D.RENAUD/D.SINISI

|                    |
|--------------------|
| 6609126-2          |
| 6609126-1          |
| OBsolete 1609126-1 |
| 1609126-2          |

| 50Ω-50Ω (MINIMUM) INSERTION LOSS |     |    |     |     |    |    |    |
|----------------------------------|-----|----|-----|-----|----|----|----|
| FREQUENCY MHz                    | .15 | .5 | 1.0 | 5.0 | 10 | 20 | 30 |
| COMMON dB                        | 9   | 11 | 15  | 19  | 13 | 12 | 10 |

This document is proprietary to CORCOM INC. and is not to be reproduced nor used for manufacturing purposes except on CORCOM's order or prior written consent.

TOLERANCE EXCEPT AS NOTED

DECIMAL: .XXX .XX .X ANGLES ± 1°  
 ENGLISH: ±.015  
 METRIC: ± —

MATERIAL: AS SUPPLIED

FINISH:



**POWER LINE FILTER**

|              |                 |                           |          |
|--------------|-----------------|---------------------------|----------|
| SCALE: NTS   | DATE: 8-10-90   | DRG. NO.: 6HJ4-4 & 6HJ4-2 | REV.: 03 |
| DRW. BY: CFW | ORIGINATOR: CFW |                           |          |

\*RESISTOR ADDED TO PRODUCT BUILT AFTER 3-30-92 (9212).