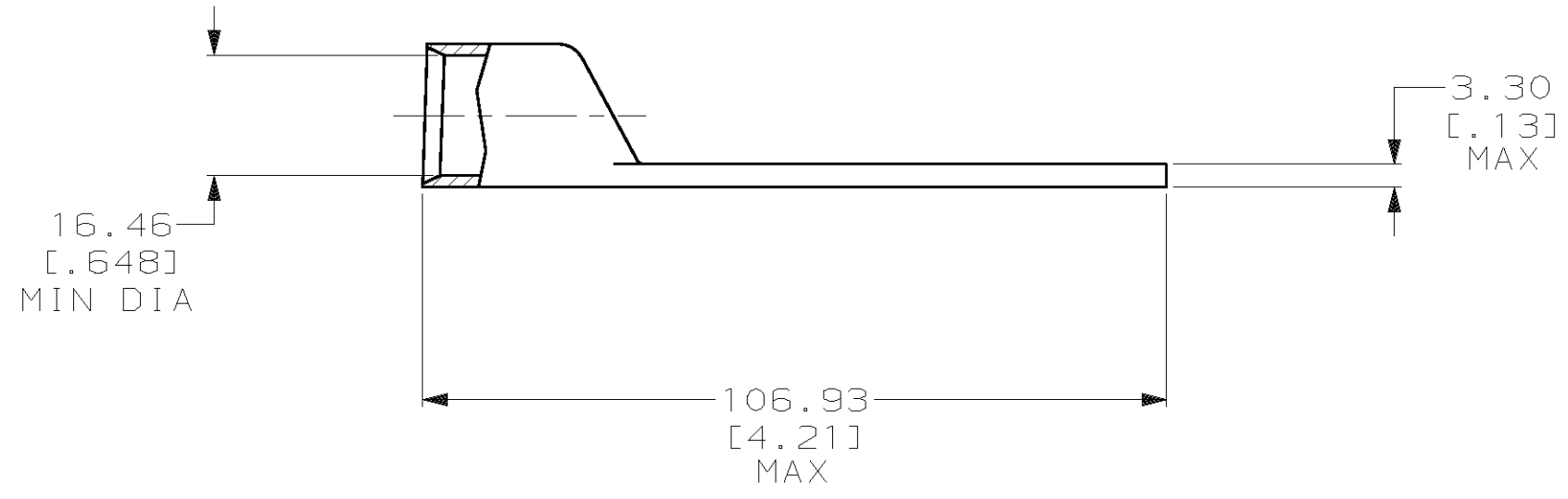
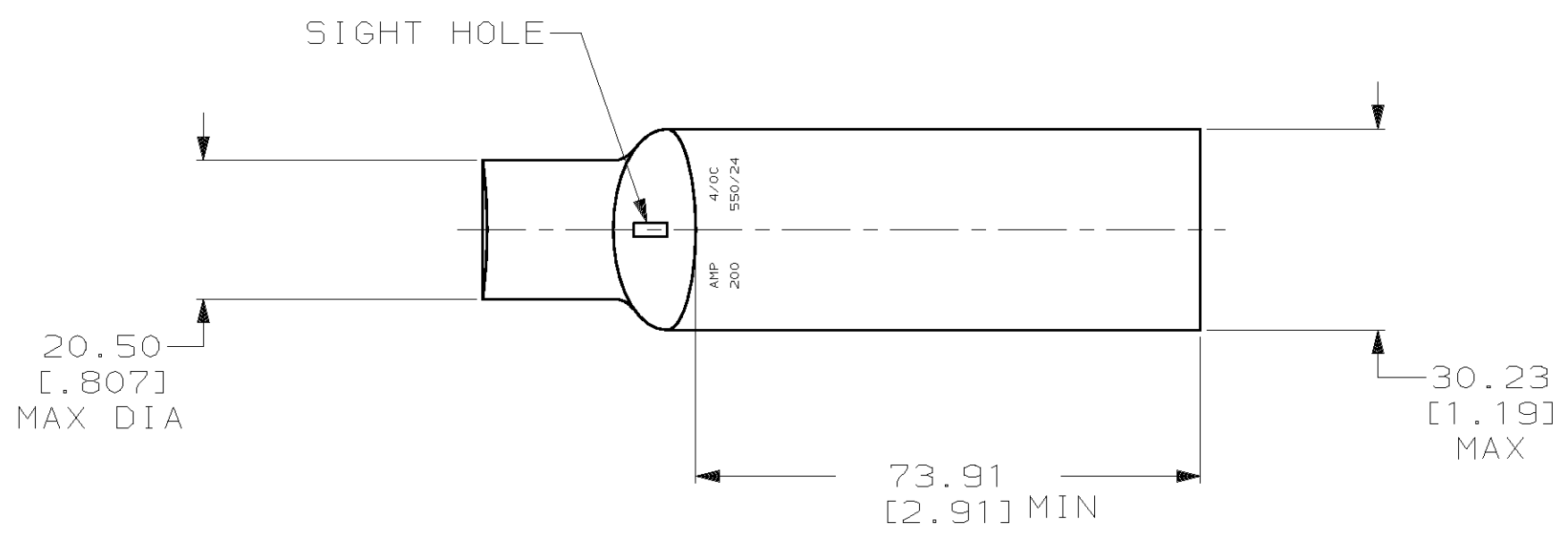


THIS DRAWING IS UNPUBLISHED. RELEASED FOR PUBLICATION, 19 .
 © COPYRIGHT 19 BY AMP INCORPORATED. ALL INTERNATIONAL RIGHTS RESERVED.

LOC		DIST		REVISIONS				DATE	APPD
ZONE	LTR	DESCRIPTION	DATE	APPD					
G	86	P	F	B	REV PER 0G3A-0561-01	090CT02	JR/MS		

- 1 CIRCULAR MIL RANGE: 190,000-231,000 CM
- 2 CLEANED, UNPLATED
- 3 PREPRODUCTION - FASR REQ



DO NOT SCALE PRINT. UNLESS SPECIFIED DIMENSIONS IN mm [INCHES] TOLERANCES ON :		DR 24JAN01 JR RUTH		<div style="text-align: center;"> AMP Incorporated Harrisburg, PA 17105-3608 </div>	
2 PLC DEC ± -		CHK 24JAN01 MS FEHER		NAME	
3 PLC DEC ± -		APPD 24JAN01 M SPICER		TERMINAL, AMPPOWER™ WIRE SIZE: 4/0 AWG	
ANGLES ± -		APPD 24JAN01 M SPICER			
MATERIAL		PRODUCT SPEC		SIZE	CAGE CODE
COPPER PER ASTM B-75 ANNEALED		-		C	00779
FINISH		APPLICATION SPEC		DRAWING NO	
SEE TABLE		-		C-696286	
THIS DRAWING IS A CONTROLLED DOCUMENT FOR AMP INCORPORATED. IT IS SUBJECT TO CHANGE AND THE CONTROLLING ENGINEERING ORGANIZATION SHOULD BE CONTACTED FOR THE LATEST REVISION.		WEIGHT .164 LBS		SCALE 1:1	SHEET 1 OF 1