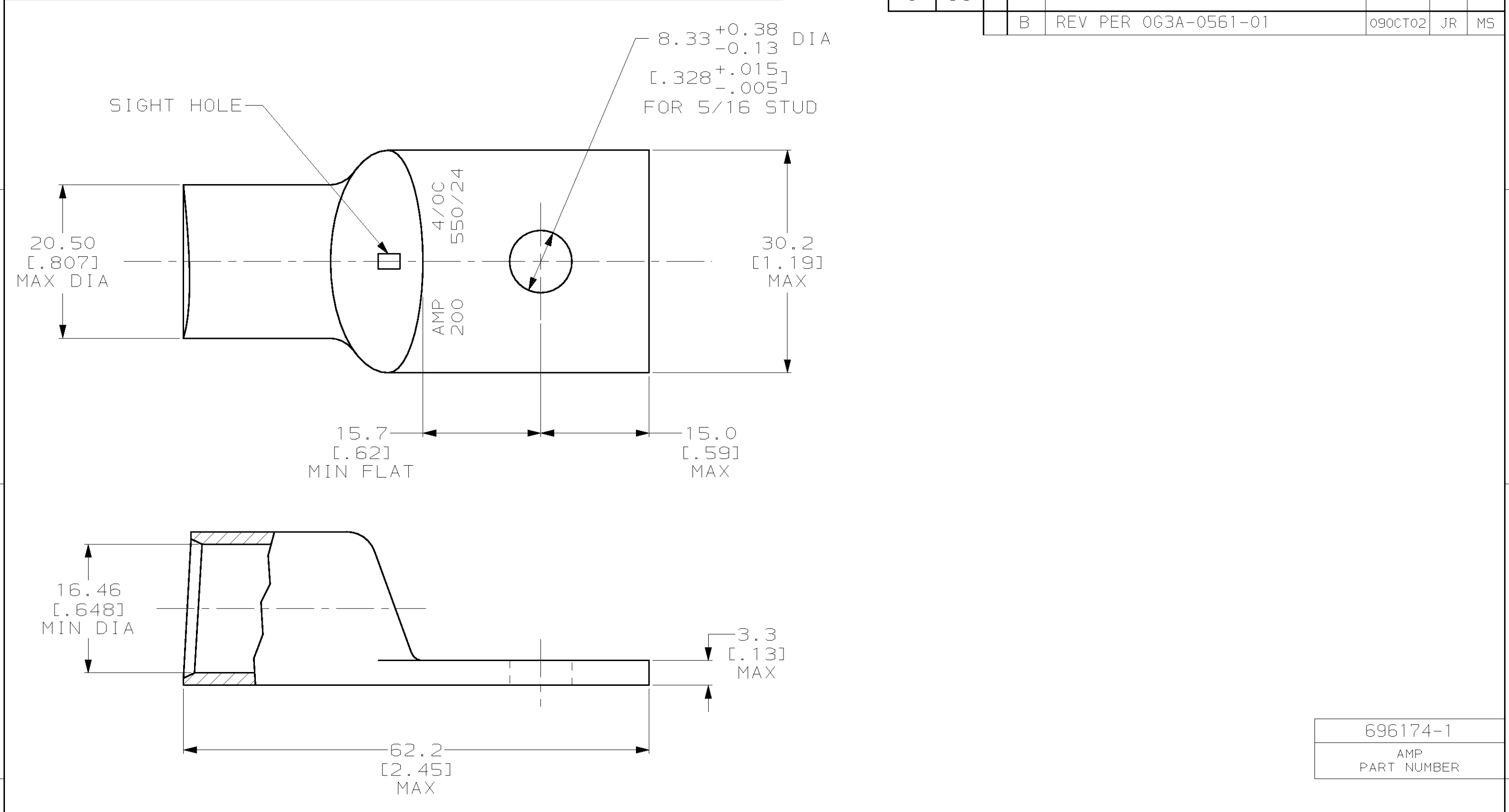


THIS DRAWING IS UNPUBLISHED. RELEASED FOR PUBLICATION ,19 .
 © COPYRIGHT 19 BY AMP INCORPORATED. ALL RIGHTS RESERVED.

LOC	DIST	REVISIONS			
P	LTR	DESCRIPTION	DATE	DWN	APVD
G	86	B	REV PER 0G3A-0561-01	09OCT02	JR MS



696174-1
AMP
PART NUMBER

AMP INCORPORATED
CUSTOMER SERVICE SYSTEMS

FOR ADDITIONAL PRODUCT INFORMATION OR COPIES OF DRAWINGS AND TECHNICAL DOCUMENTS: PRODUCT INFORMATION CENTER 1-800-522-6752

FOR APPLICATION TOOLING INFORMATION: TOOLING ASSISTANCE CENTER 1-800-722-1111

FOR ORDER ENTRY: 1-800-526-5142

RECOMMENDED OPERATING TEMPERATURE: -

VOLTAGE RATING: NOT APPLICABLE

WIRE CROSS SECTIONAL AREA RANGE: 96.3-117.0mm² [190,000-231,000] CIR MILS SOLID OR STRANDED

THIS DRAWING IS A CONTROLLED DOCUMENT FOR AMP INCORPORATED. IT IS SUBJECT TO CHANGE AND THE CONTROLLING ENGINEERING ORGANIZATION SHOULD BE CONTACTED FOR THE LATEST REVISION.

DIMENSIONS:	TOLERANCES UNLESS OTHERWISE SPECIFIED:
mm [INCHES]	
	0 PLC ±-
	1 PLC ±-
	2 PLC ±0.51 [.020]
	3 PLC ±-
	4 PLC ANGLES ±5°
MATERIAL COPPER PER ASTM B-75 ANNEALED	FINISH NICKEL PLATE 0.00254 [.000100] MIN THK PER QQ-N-290

DWN JR RUTH 20MAR00	AMP Incorporated Harrisburg, PA 17105-3608
CHK M SPICER 20MAR00	
APVD M SPICER 20MAR00	
PRODUCT SPEC	
APPLICATION SPEC 114-2150	NAME TERMINAL, AMPOWER, WIRE SIZE: 4/0 AWG
WEIGHT .103 lbs	SIZE A3 CAGE CODE 00779 DRAWING NO C-696174
CUSTOMER DRAWING	SCALE 2:1 SHEET 1 OF 1 REV B