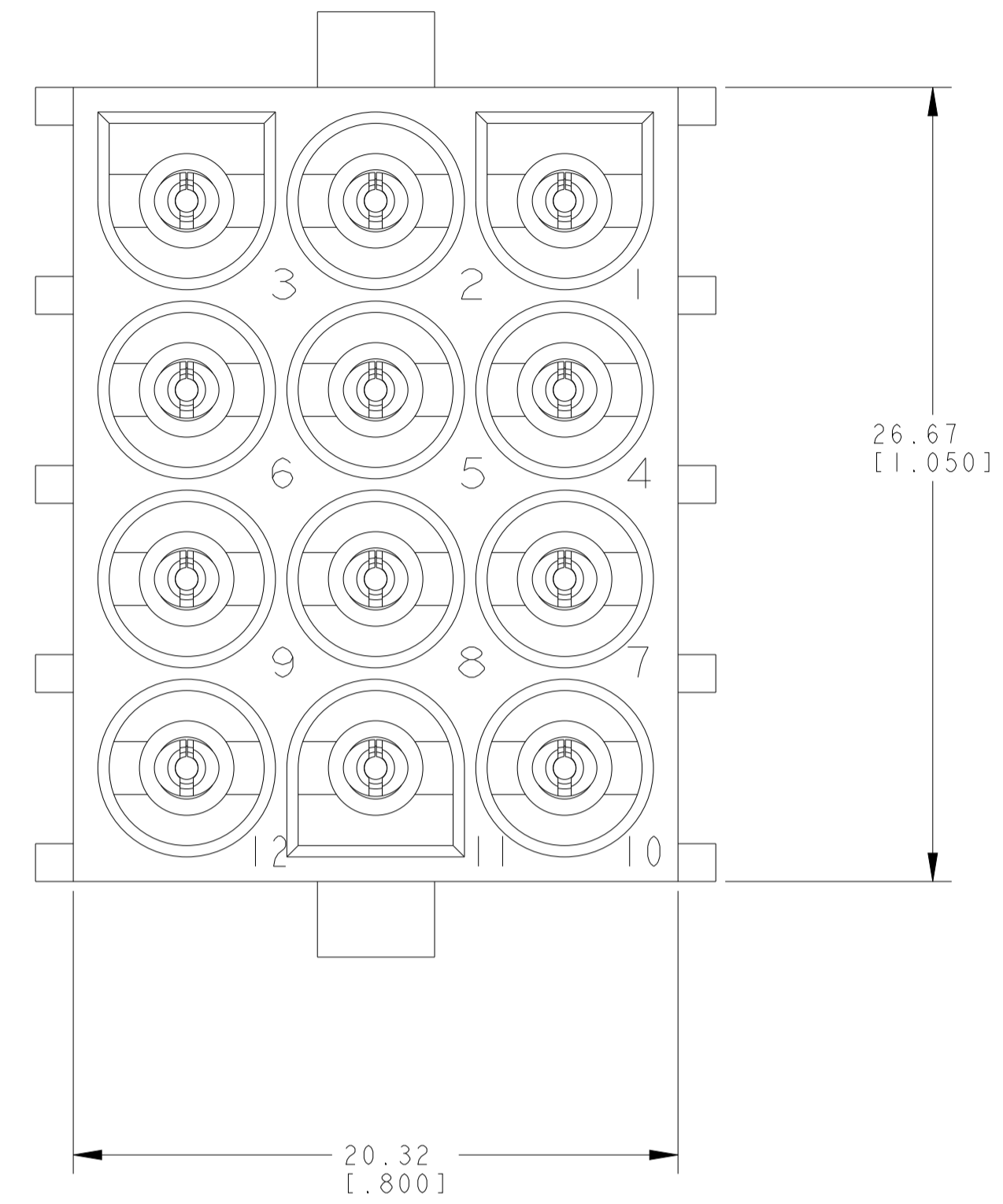
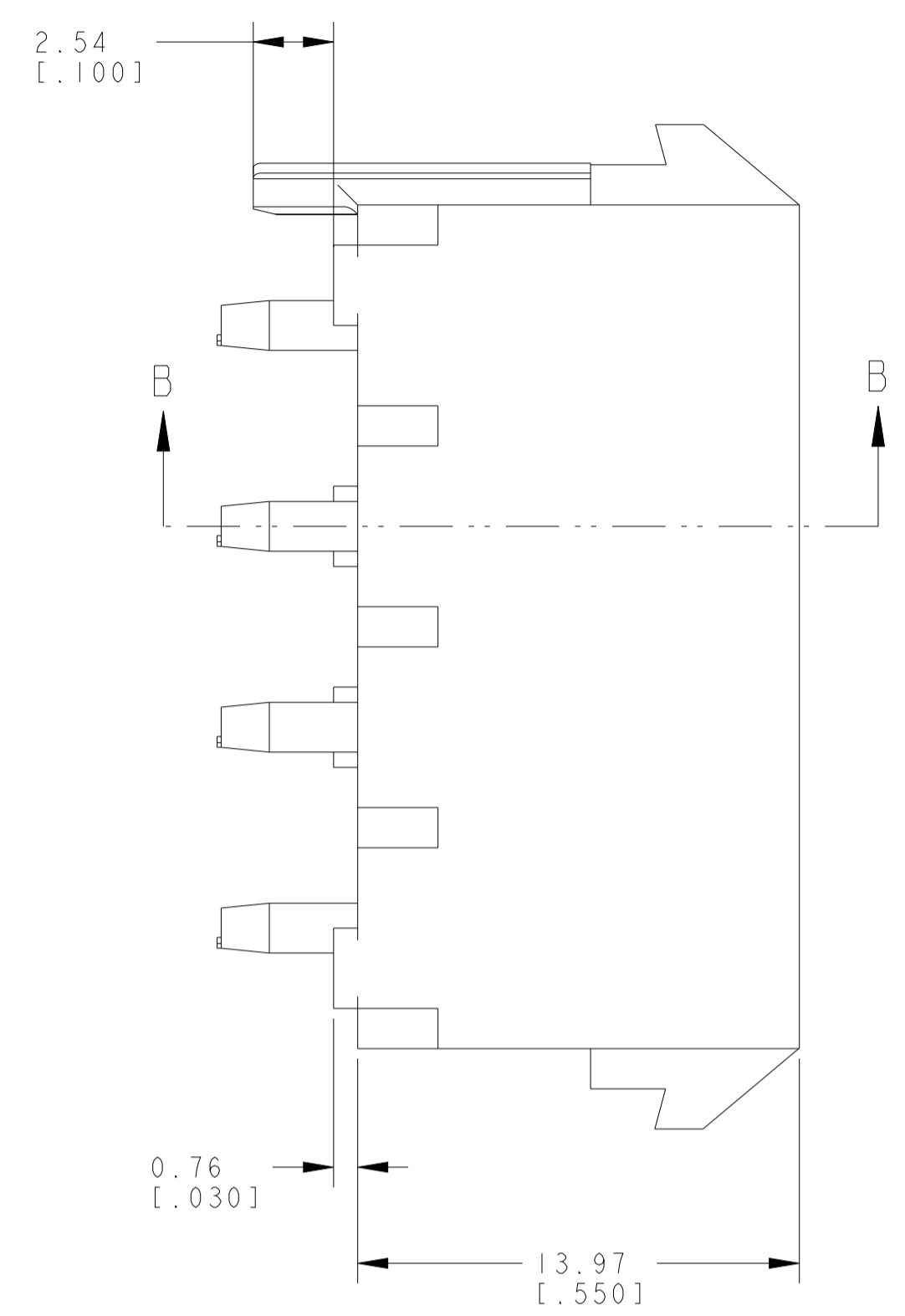
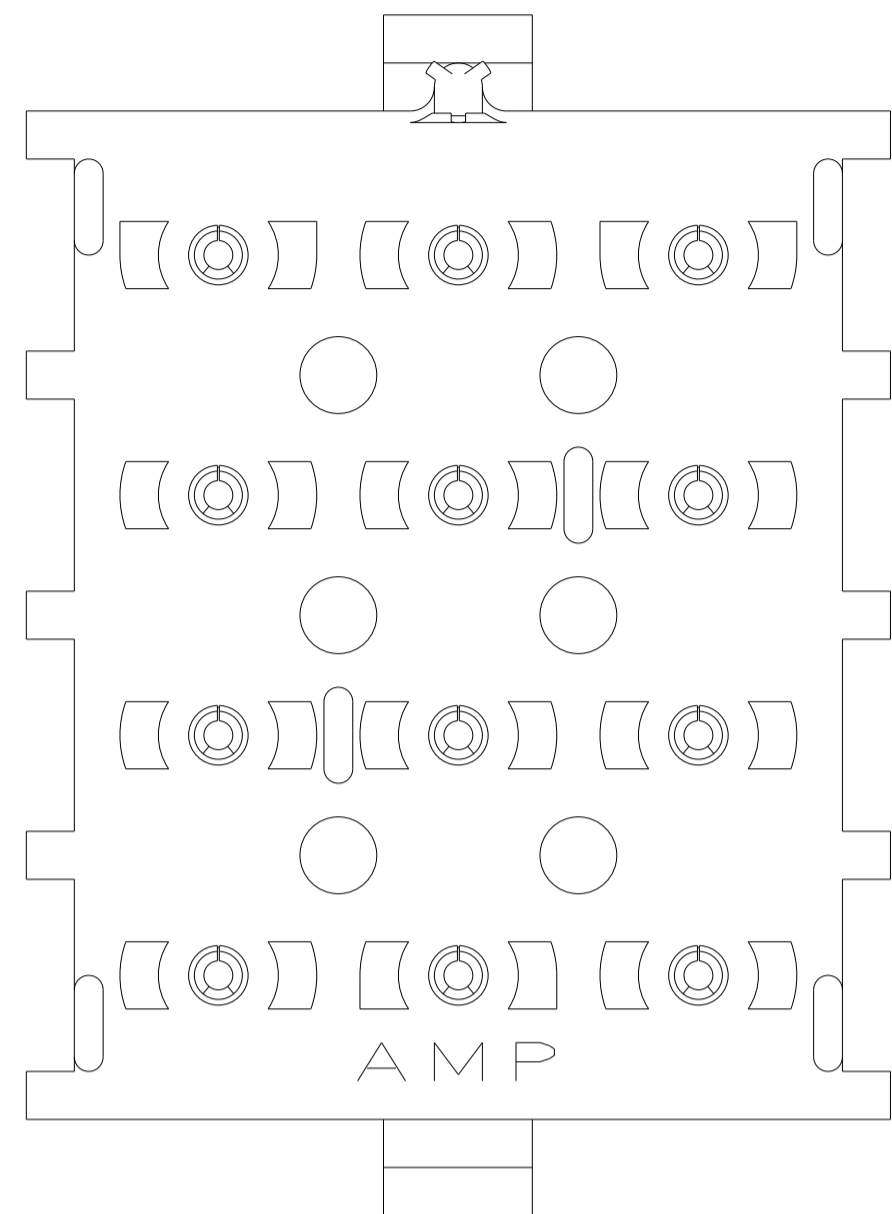
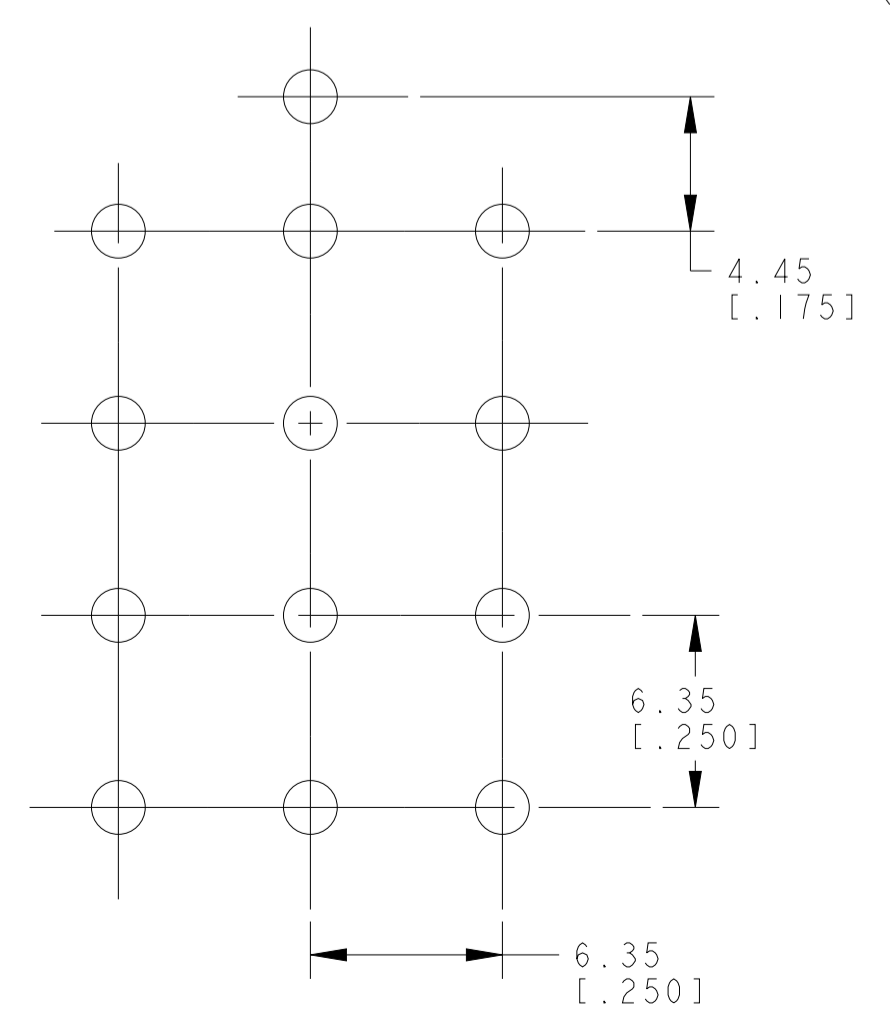
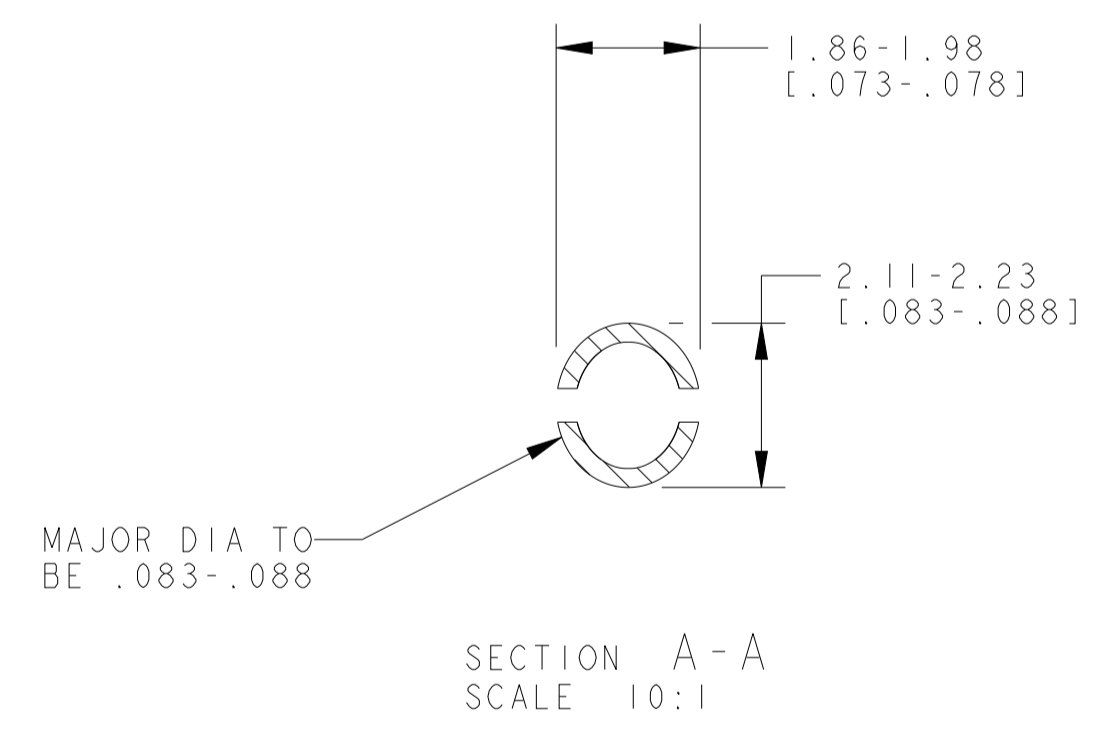
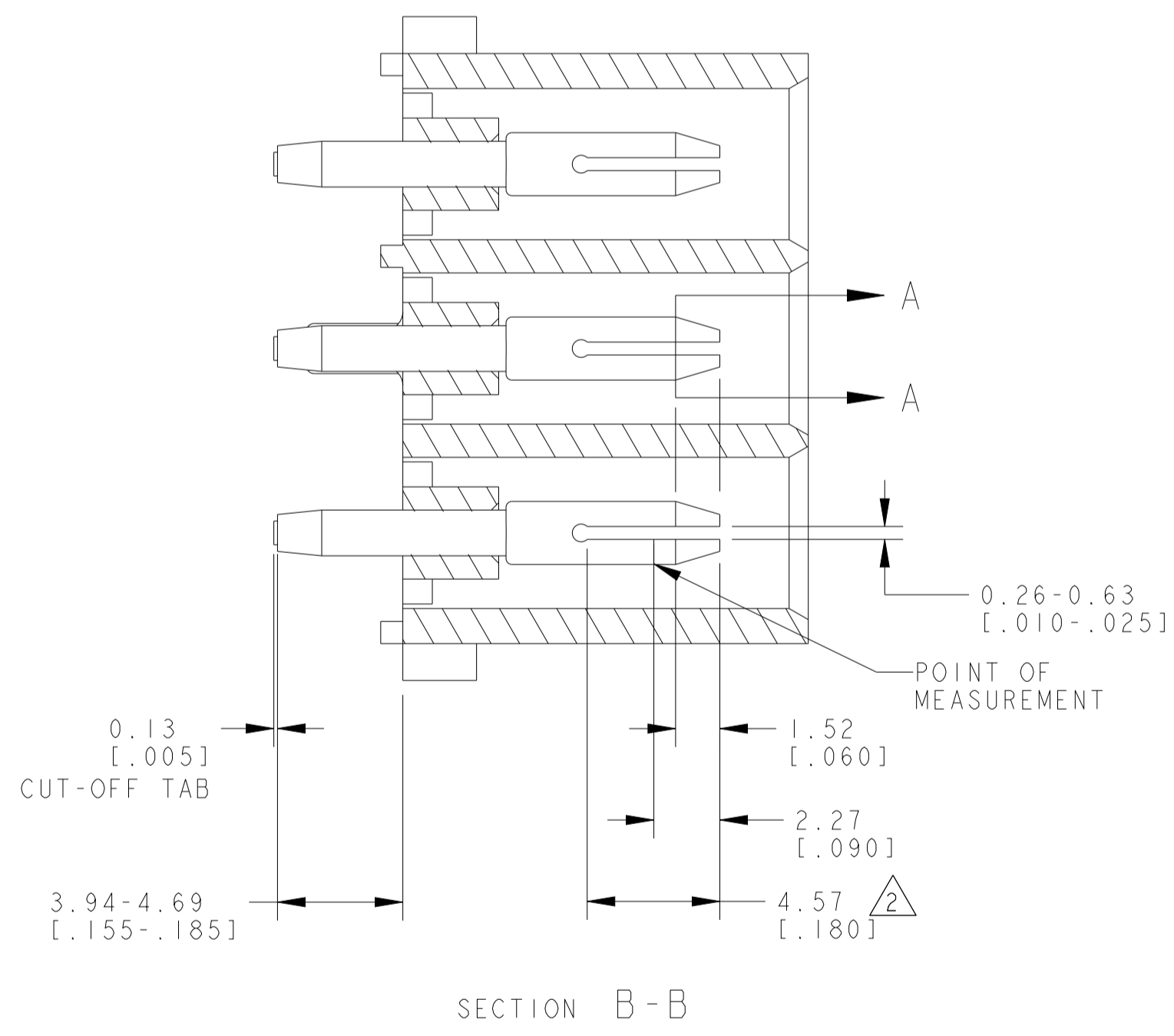


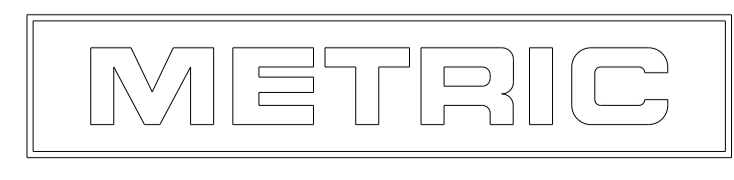
LOC	DIST	REVISIONS					
		P	LTN	DESCRIPTION	DATE	DWN	APVD
CM	00	P1		REVISED PER ECR-12-011660	24JAN2013	KH	TM
		P2		REVISED PER ECR-21-118222	22JUL2022	AVN	VS



1. PARTS MUST COMPLY WITH AMP SOLDERABILITY SPEC. 109-11-3.
2. CONTACT IS PLATED OVERALL WITH 0.00127 [0.000050] NICKEL, THEN 0.00076 [0.000030] GOLD OVER CONTACT LENGTH INDICATED AND TIN LEAD ON SOLDER TAIL END.
3. CIRCUIT IDENTIFICATION ON CHARACTERS ARE ADJACENT TO THE INDICATED CAVITIES, BUT LOCATION AND ORIENTATION MAY DIFFER FROM PRINT.
4. CONTACT IS PLATED OVERALL WITH 0.00127 [0.000050] NICKEL, THEN 0.00076 [0.000030] GOLD OVER CONTACT LENGTH INDICATED AND MATTE TIN ON SOLDER TAIL END.
5. SUPERSEDED BY 641974-3
6. DIMENSIONS SHOWN REPRESENT PRODUCT IN DRY CONDITION. ADDITIONAL 2% GROWTH DUE TO END USE LOCATION MOISTURE ABSORPTION MAY OCCUR AND SHOULD BE ACCOUNTED FOR.



RECOMMENDED HOLE PATTERN  
 1.57 [0.062] THICK PC BOARD



PH BRZ	PRE-TIN	NYLON, 94V-0	BLACK	1-641974-1
PH BRZ	GOLD <sup>4</sup>	NYLON, 94V-0	WHITE	641974-3
PH BRZ	GOLD <sup>2</sup>	NYLON, 94V-0	WHITE	641974-2
PH BRZ	PRE-TIN	NYLON, 94V-0	WHITE	641974-1
MATERIAL	FINISH	MATERIAL	COLOR	PART NO
PIN			HOUSING	

THIS DRAWING IS A CONTROLLED DOCUMENT.		DWN	R. WHITAKER	14OCT2005
DIMENSIONS:		CHK	S. RIDGILL	14OCT2005
INCHES		APVD	S. RIDGILL	14OCT2005
TOLERANCES UNLESS OTHERWISE SPECIFIED:		NAME		
0 PLC	±	R. WHITAKER		
1 PLC	±	S. RIDGILL		
2 PLC	±	PRODUCT SPEC		
3 PLC	±.005	APPLICATION SPEC		
4 PLC	±	SIZE		
ANGLES	±	CAGE CODE		
FINISH	±	DRAWING NO		
MATERIAL		WEIGHT		RESTRICTED TO
		CUSTOMER DRAWING		SCALE 5:1 SHEET 1 OF 1 REV P2



TE Connectivity  
 HEADER ASSEMBLY, PIN  
 UNIVERSAL MATE-N-LOK (TM),  
 (STANDARD TAIL)

SIZE CAGE CODE DRAWING NO  
 A100779C=641974