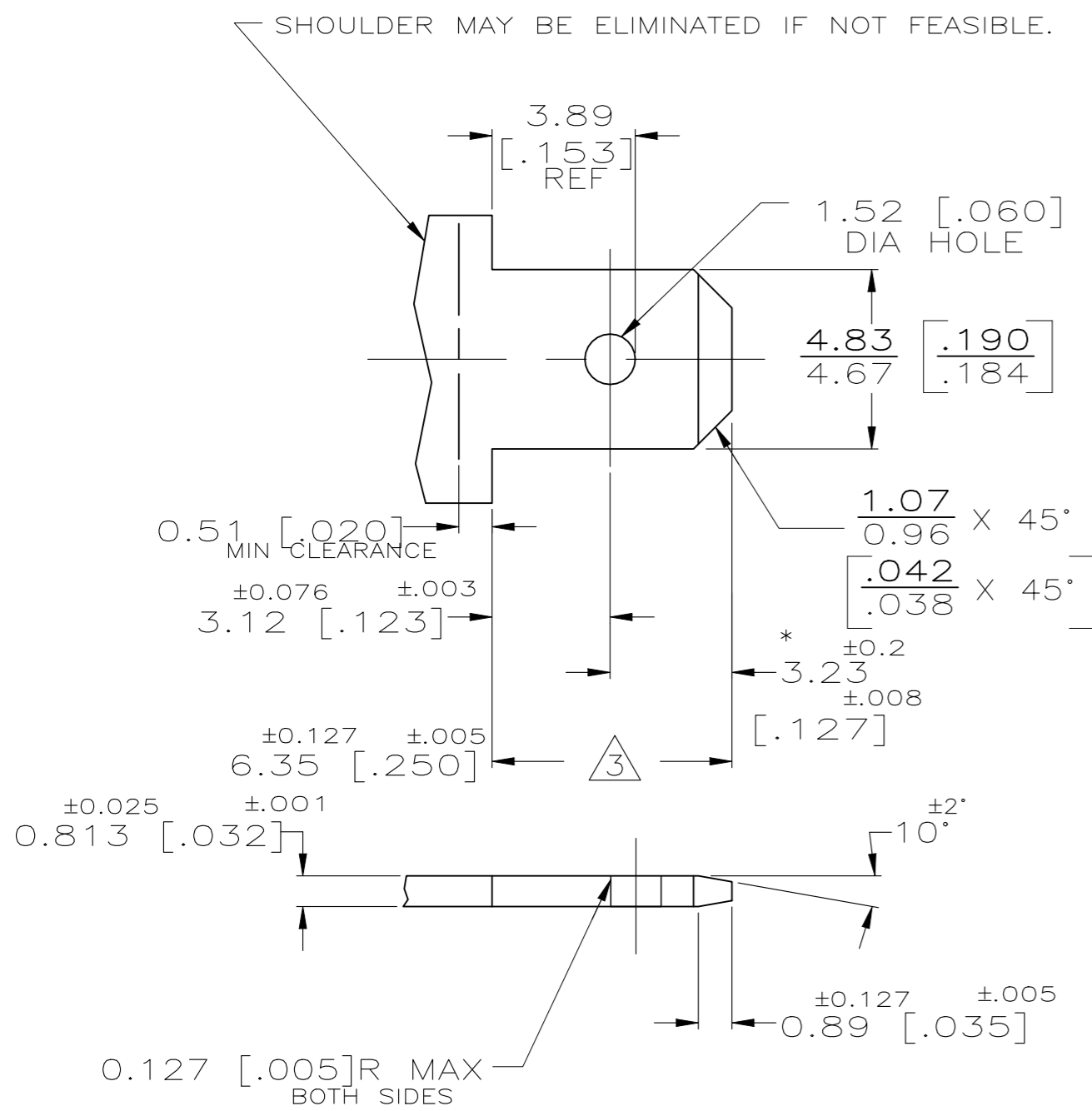
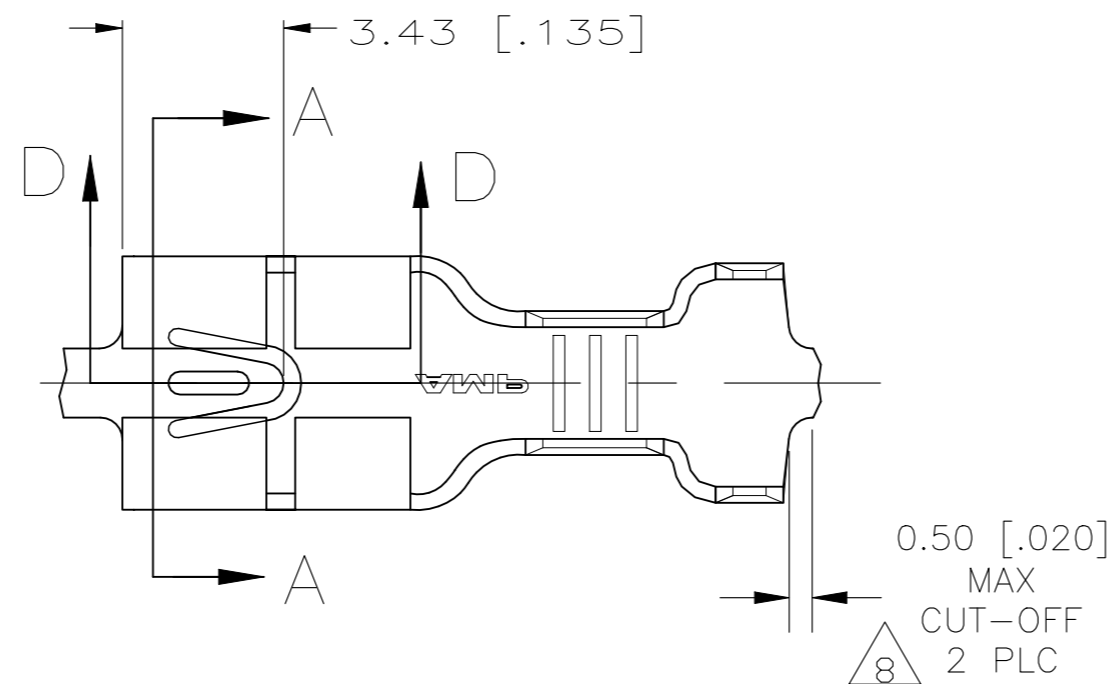


REVISIONS					
P	LTR	DESCRIPTION	DATE	DWN	APVD
M8		REVISED PER ECR-19-018140	23DEC2020	SS	EW

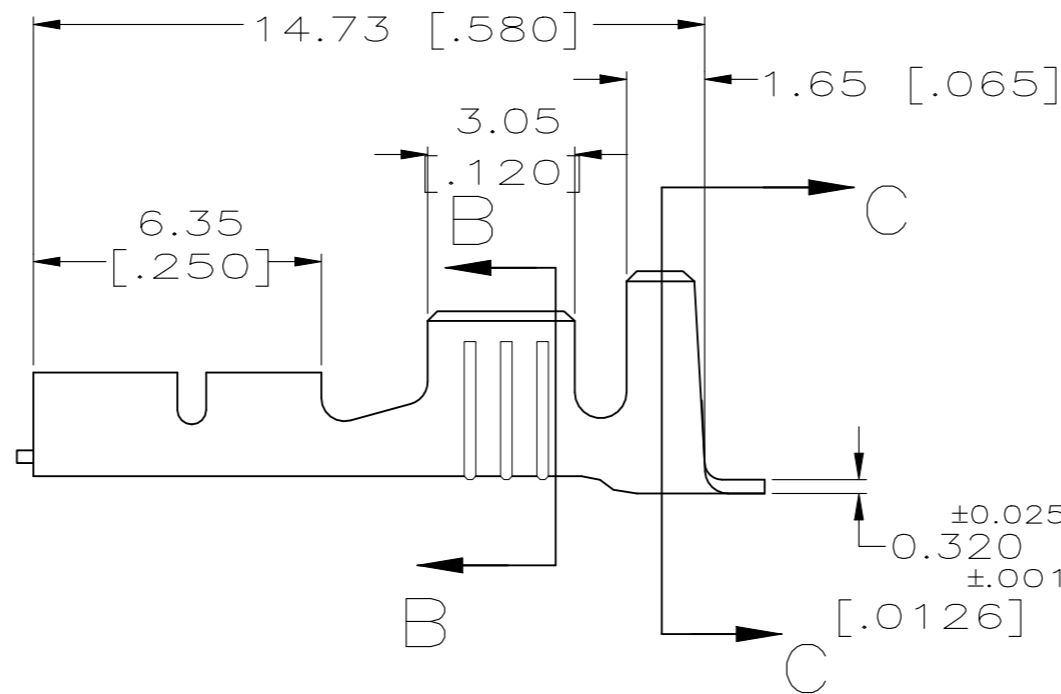
SUGGESTED MATING TAB



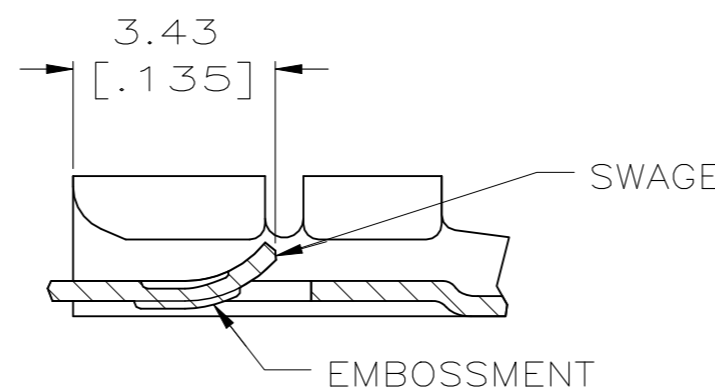
- 1 - MATL: 1/2H BRASS OR NICKEL PL STEEL.
- 2 - NO BURRS PERMISSIBLE AT HOLE.
- 3 - MUST BE FLAT WITHIN 0.076 [.003] OVER THIS LENGTH.
- 4 - HOLE MUST BE SYMMETRICAL ABOUT TAB Q̄ WITHIN 0.076 [.003]
- * TO BE USED ONLY WHEN SHOULDER IS ELIMINATED.



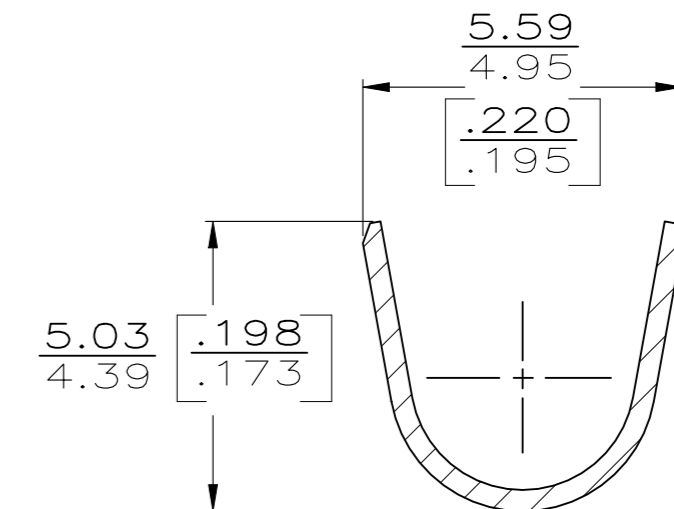
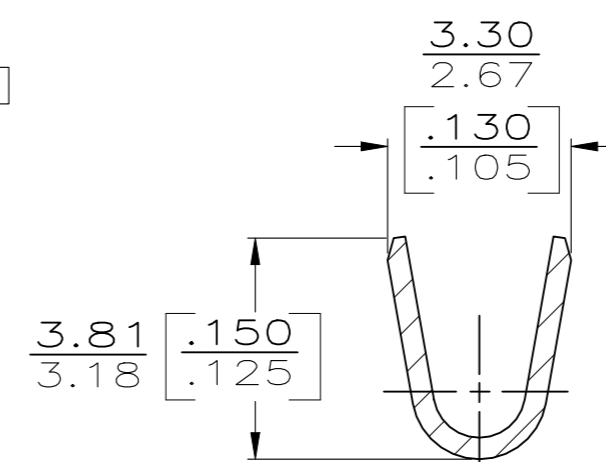
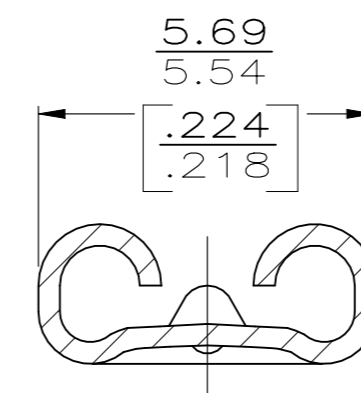
SECTION A-A
SCALE 8:1



SECTION B-B
SCALE 8:1



SECTION D-D
SCALE 8:1



SECTION C-C
SCALE 8:1

- 1 CONTINUOUS STRIP ON REELS
- 2 TIN PL 0.002032 [.000080] MIN THK PER MIL-T-10727A
- 3 63606-1 SOLD TO FORD WITH FORD'S P/N ON REELING LABEL.
- 4 SPECIAL PACKAGING
- 5 WIRE SIZE IS 0.8-2.0MM² [18-14] AWG
- 6 INSULATION RANGE IS 4.09-4.98 [.161-.196] DIA.
- 7 FOR LOOSE PIECE PARTS ONLY
- 8 PRE-TIN PLATED
- 9 PREPRODUCTION- FASR REQUIRED
- 10 OBSOLETE

10	7	LOOSE PIECE	8	BRASS	9-1-63606-6
10	7	LOOSE PIECE	---	BRASS	9-1-63606-5
7	7	LOOSE PIECE	2	BRASS	9-1-63606-4
			8	BRASS	9-63606-6
			---	BRASS	63606-5
			2	BRASS	63606-4
			2	#4 PHOS BRONZE	4-63606-3
					63606-2
					63606-1
F2DU14474AA					
FORD P/N		FINISH		MATERIAL	PART NO.

F	4.57 [.180]	4.78 [.188]	F	2.29 [.090]	1.85 [.073] 2.0mm ² [14]	2.0mm ² [14]
					1.57 [.062] 1.3mm ² [16]	1.3mm ² [16]
					1.40 [.055] 0.8mm ² [18]	0.8mm ² [18]
TYPE	WIDTH	STRIP LENGTH ±0.38 [±.015]	TYPE	WIDTH	±0.051 [±.002] HEIGHT	WIRE
INSUL BARREL CRIMP			WIRE BARREL CRIMP			

THIS DRAWING IS A CONTROLLED DOCUMENT.		DWN	JR RUTH	2/25/91
DIMENSIONS: MM [INCHES]		CHK	MS FEHER	2/25/91
TOLERANCES UNLESS OTHERWISE SPECIFIED:		APVD	J GILLESPIE	2/25/91
0 PLC ± -		PRODUCT SPEC		
1 PLC ± -		APPLICATION SPEC		
2 PLC ± -				
3 PLC ± 0.25 [.010]		WEIGHT	0.000000	A2 00779 C=63606
4 PLC ± -		CUSTOMER DRAWING		
ANGLES ± -		SCALE	6:1	SHEET 1 OF 1
MATERIAL	SEE TABLE	FINISH	SEE TABLE	REV M8