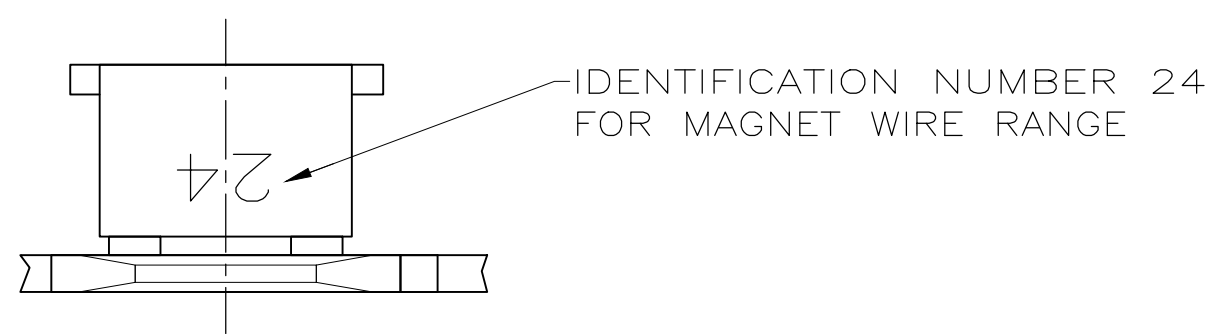
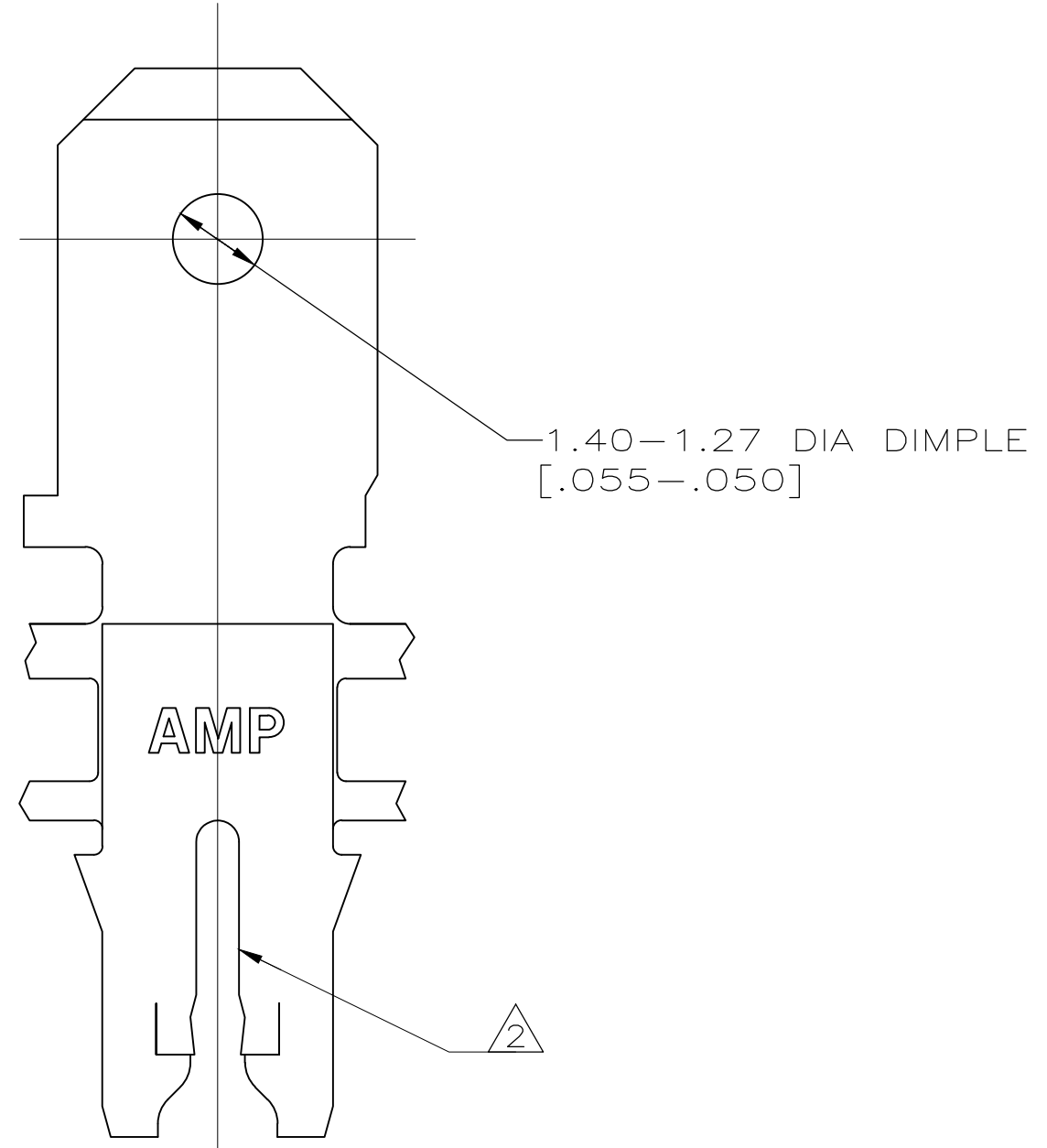
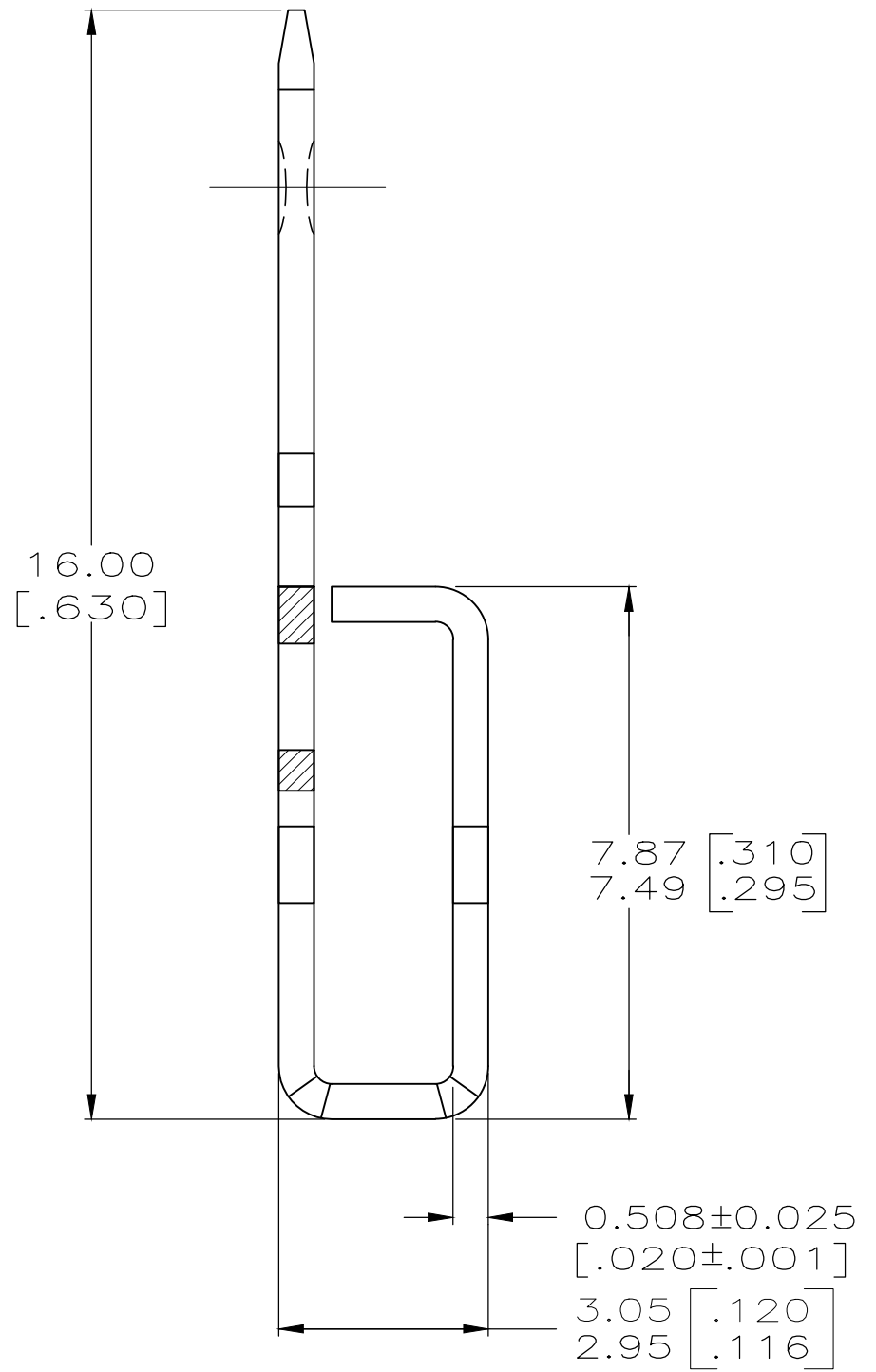
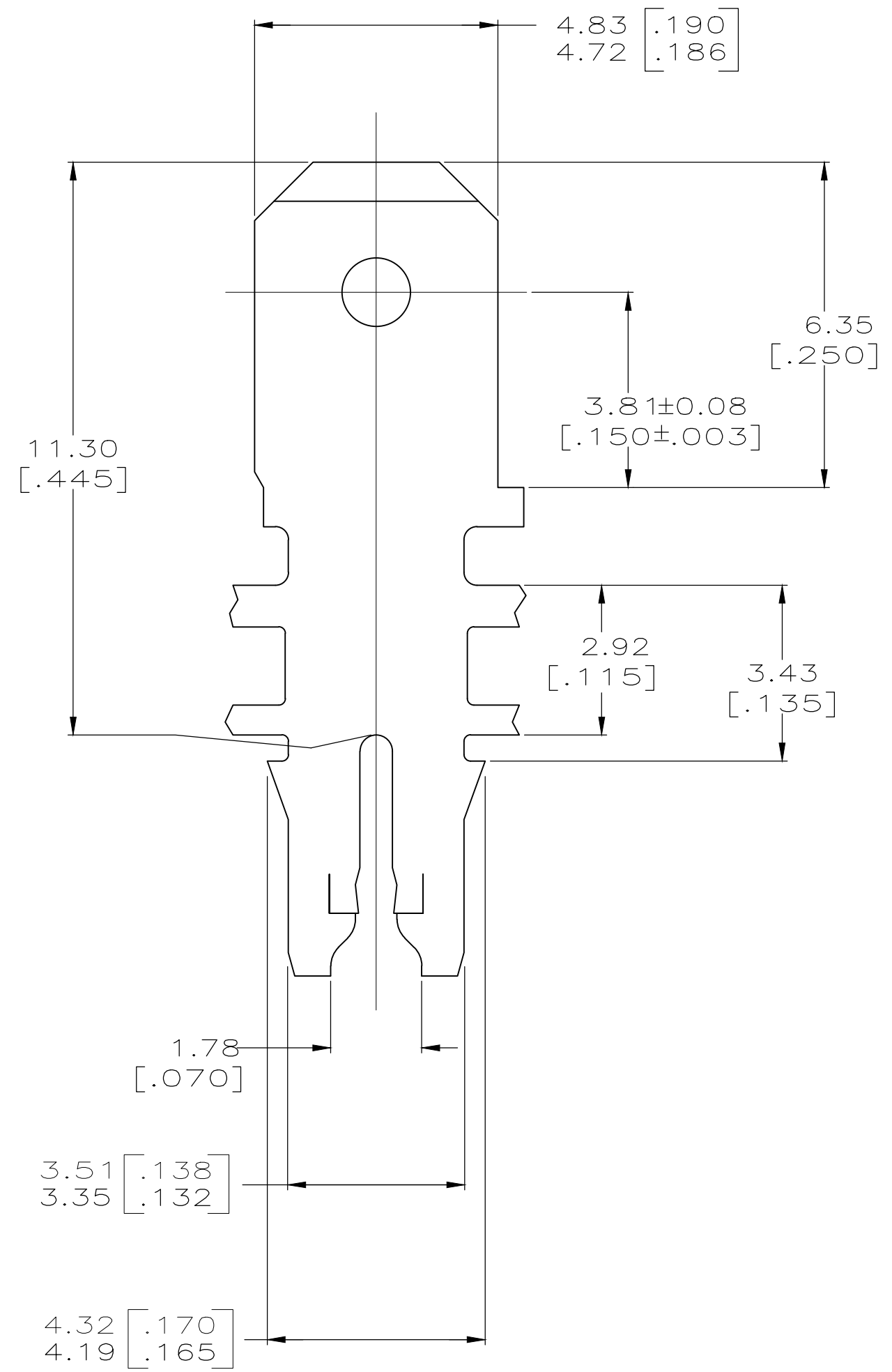


LOC	DIST	P	F	ZONE	LTR	REVISIONS	DATE	APPD
AF	50					D WIRE SIZE EXTENDED TO 16.5AWG	11NOV2019	JA/PKS



- CONTINUOUS STRIP ON REELS WITH TERMINALS LOCATED ON  $5.59 \pm 0.08$  [ $.220 \pm .003$ ] CENTERS. SLOT TERMINATES A SINGLE MAGNET WIRE ONLY. COPPER RANGE: 0.91–1.20mm [#19–#16.5] AWG. ALUMINUM RANGE: 0.95–1.20mm [#18.5–#16.5] AWG. ALUMINUM WIRE RANGE APPLIES FOR POST-TIN PLATED VERSIONS ONLY.
- AFTER INSERTION INTO PLASTIC HOLDER TAB PORTION MUST BE BENT OVER 45° TO 90° OR POTTED-IN TO PREVENT PULL-OUT WHEN MATING RECEPTACLE IS DISCONNECTED.
- VARNISH RESIST OVER 0.002032 [.000080] MIN TIN PER MIL-T-10727.



63511

DO NOT SCALE PRINT. UNLESS SPECIFIED DIMENSIONS IN mm [INCHES] TOLERANCES ON:		DR 31/OCT/95 MICHAEL S. FEHER			
2 PLC DEC ± 0.25 [.010]		CHK 01/NOV/95 RICHARD GRZYBOWSKI			
3 PLC DEC ± -		APPD 01/NOV/95 NELSON E. NEFF		NAME	
ANGLES ± 1°		APPD 01/NOV/95 TERRY L. SHUTTER		TERMINAL, TAB, 4.75 [.187] FASTON™ MAG-MATE™	
MATERIAL	4M BRASS	PRODUCT SPEC	108-2012	SIZE	C
FINISH	△4	APPLICATION SPEC	114-2046	CAGE CODE	00779
		WEIGHT	-	DRAWING NO	C-63511
				SCALE	10:1
				SHEET	10F 1
				REV	D

THIS DRAWING IS A CONTROLLED DOCUMENT FOR AMP INCORPORATED. IT IS SUBJECT TO CHANGE AND THE CONTROLLING ENGINEERING ORGANIZATION SHOULD BE CONTACTED FOR THE LATEST REVISION.