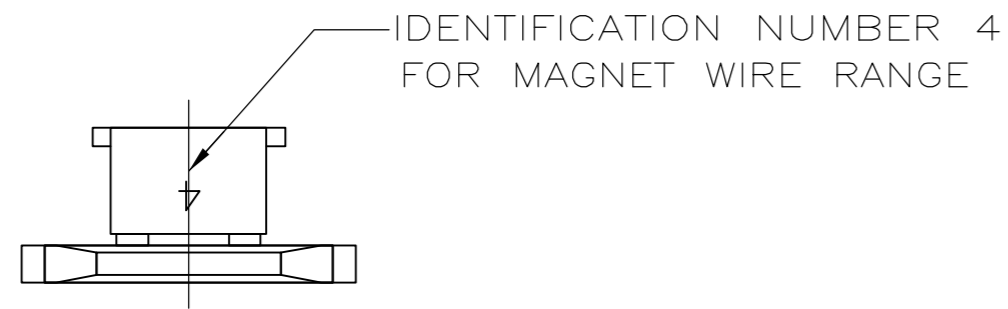
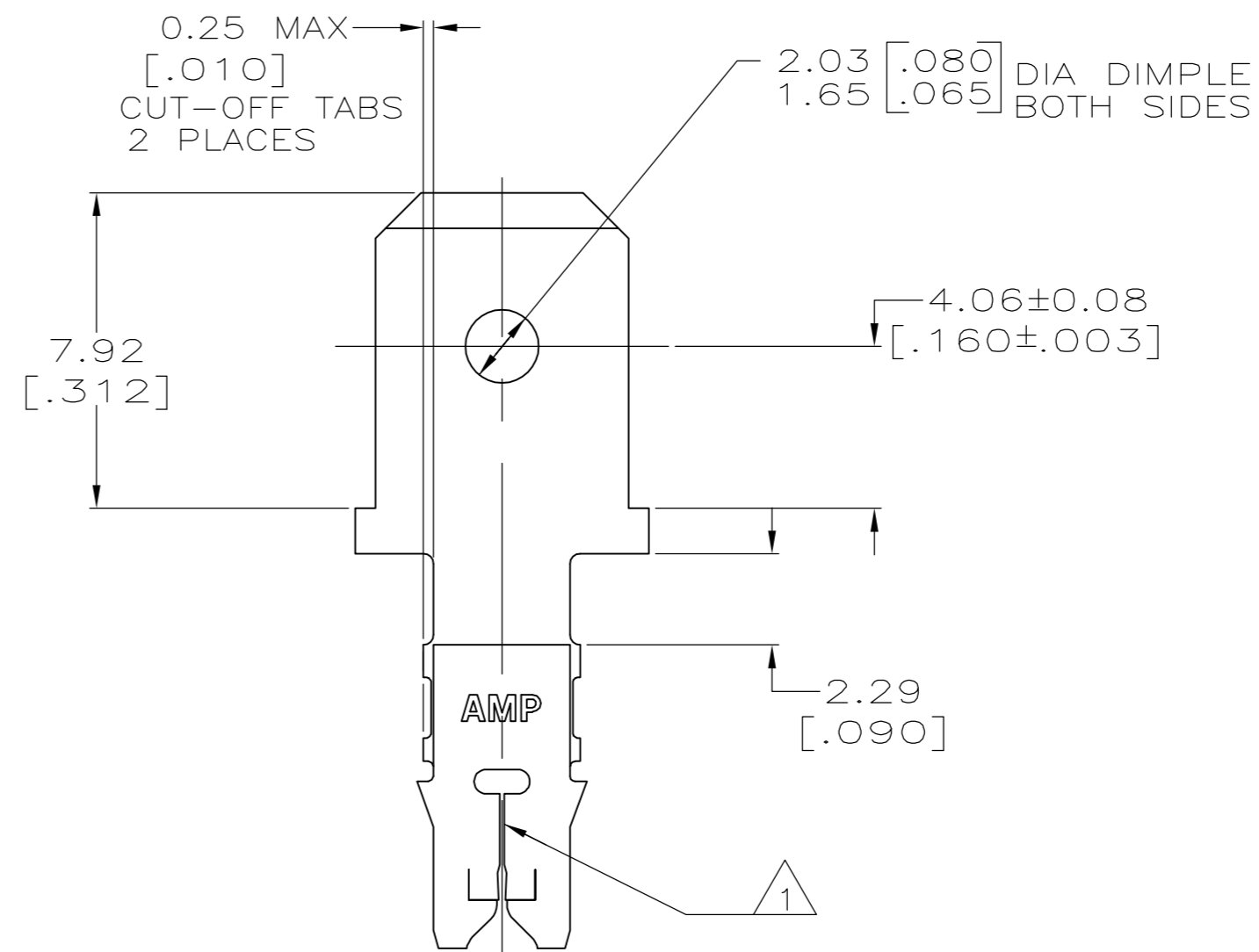
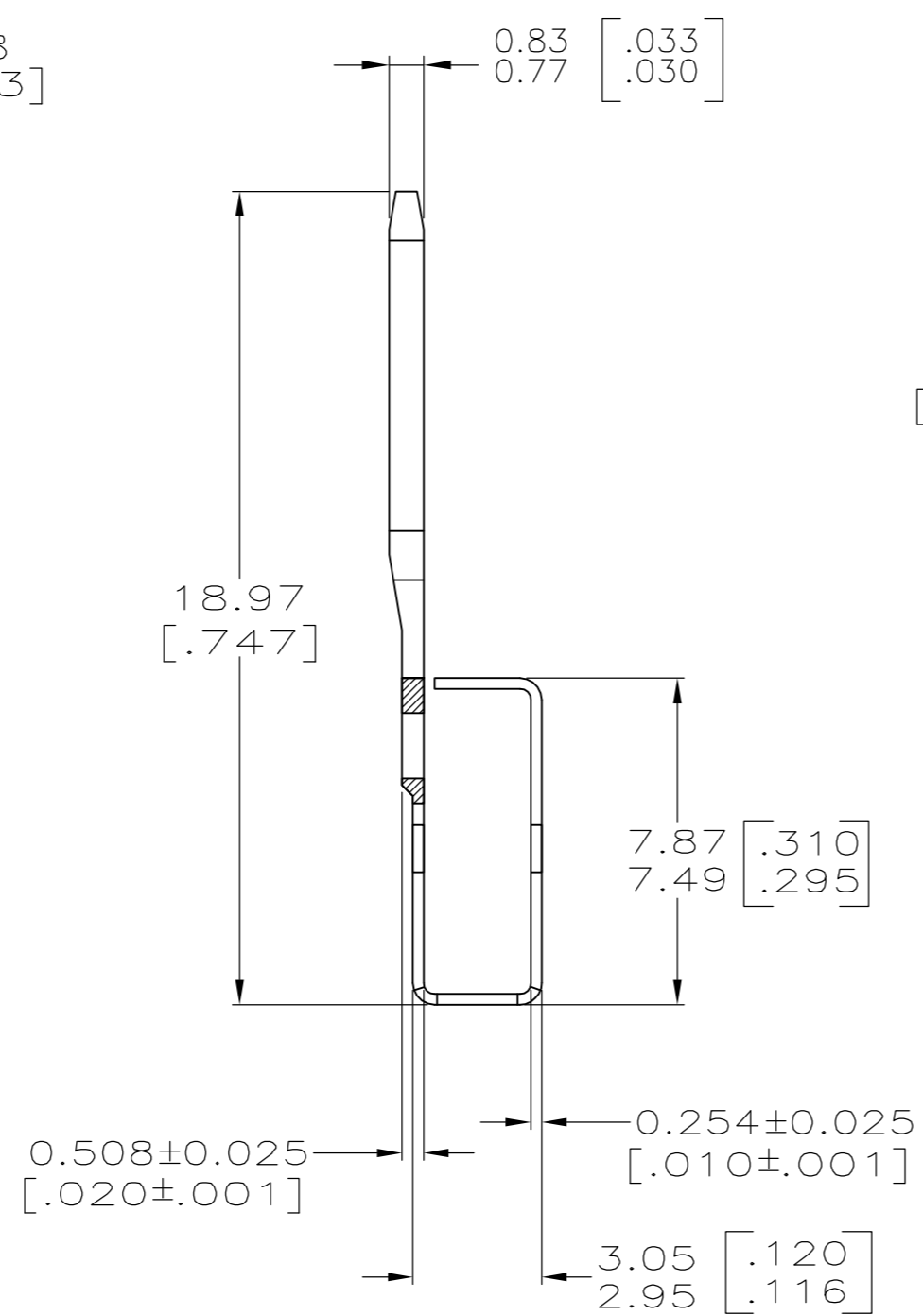
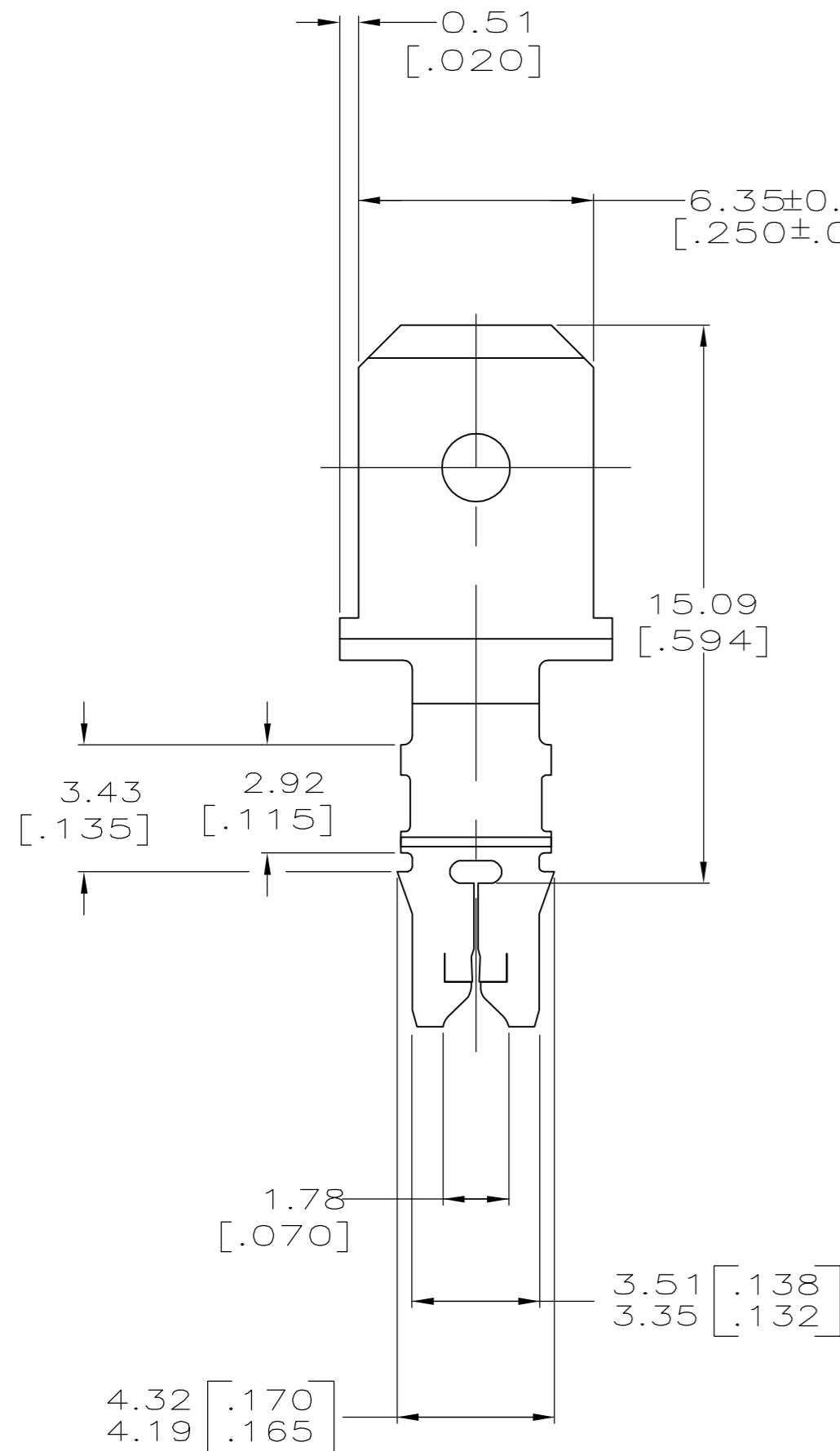


THIS DRAWING IS UNPUBLISHED. RELEASED FOR PUBLICATION
 © COPYRIGHT BY TYCO ELECTRONICS CORPORATION. ALL RIGHTS RESERVED.

LOC	DIST	REVISIONS			
P	LTR	DESCRIPTION	DATE	DWN	APVD
AF	50				
	A	REVISED PER ECR-06-010412	03NOV06	HMR	KR



- 1 SLOT TERMINATES EITHER A SINGLE OR DOUBLE MAGNET WIRE OF THE SAME TYPE AND SIZE, COPPER RANGE; 0.18-0.23mm [#33-#31] AWG.
- 2 AFTER INSERTION INTO PLASTIC HOLDER, TAB PORTION MUST BE BENT OVER 45° TO 90° OR POTTED-IN TO PREVENT PULL-OUT WHEN MATING RECEPTACLE IS DISCONNECTED.



62655-1
 PART NUMBER

THIS DRAWING IS A CONTROLLED DOCUMENT.		DWN 22OCT98 MICHAEL S. FEHER	Tyco Electronics Corporation Harrisburg, PA 17105-3608	
DIMENSIONS: mm [INCHES]		CHK 22OCT98 PHILLIP M. FORTNEY		
TOLERANCES UNLESS OTHERWISE SPECIFIED:		APVD 22OCT98 GARY D. PORTA	NAME TAB, 6.35[.250] FASTON™ LOOSE PIECE, 300 SERIES MAG-MATE™	
0 PLC ± - 1 PLC ± - 2 PLC ± 0.15 [.006] 3 PLC ± - 4 PLC ± - ANGLES ± -		PRODUCT SPEC 108-2012	SIZE CAGE CODE DRAWING NO RESTRICTED TO A2 00779 C=62655 -	
MATERIAL 4M PRE-MILLED BRASS		FINISH 0.002032 [.000080] MIN TIN	WEIGHT -	
		CUSTOMER DRAWING		SCALE 6:1 SHEET 1 of 1 REV A