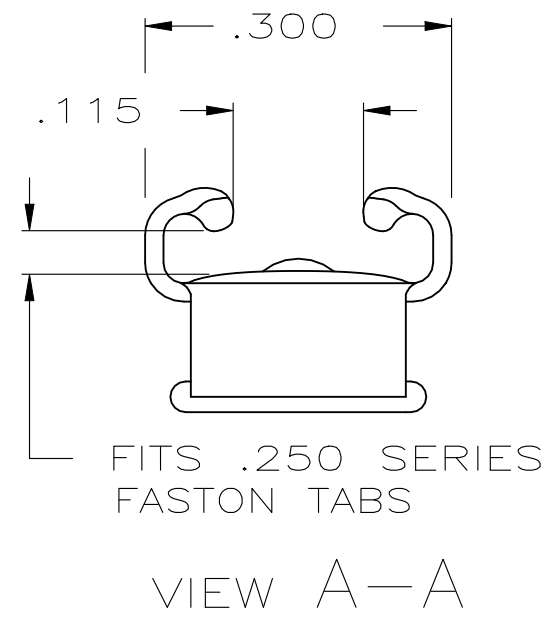
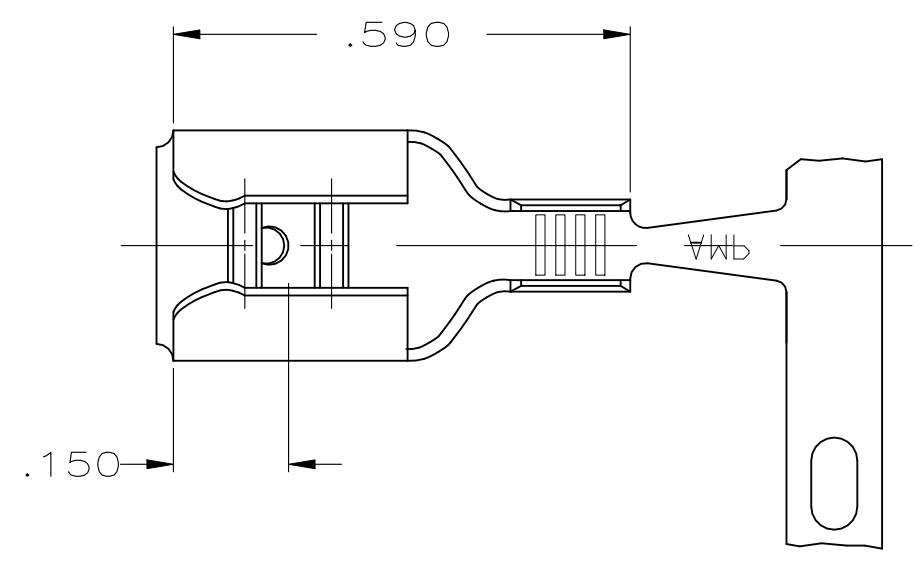
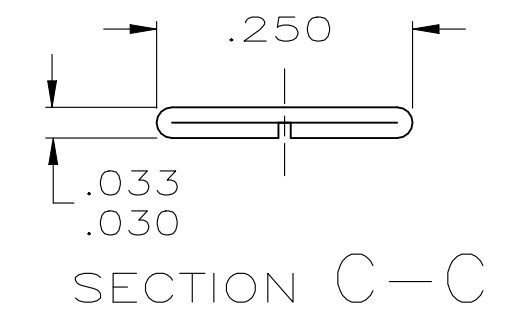
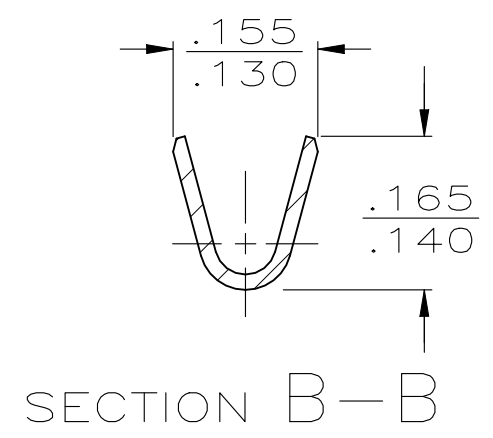
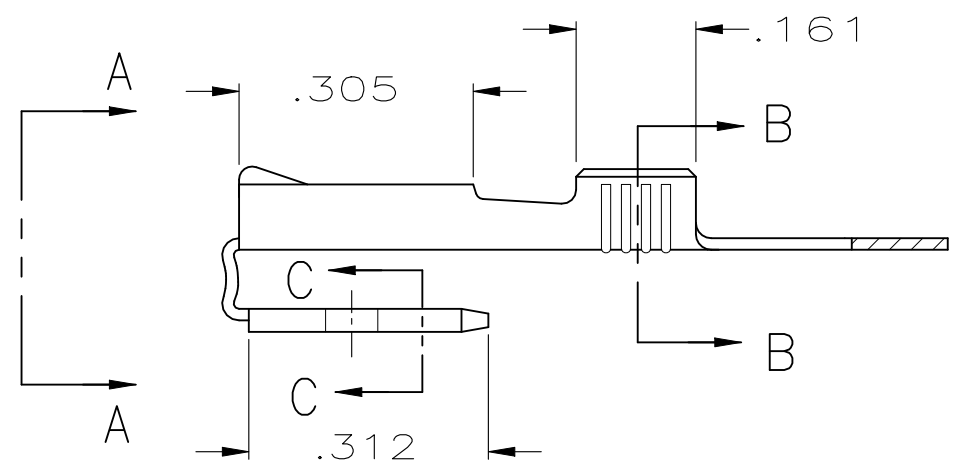


REVISIONS					
P	LTR	DESCRIPTION	DATE	DWN	APVD
	G3	REVISED PER ECR-23-183025	20OCT2023	DB	DH



- 1 CONTINUOUS STRIP ON REELS.
  2. THE GAP ON THE ROLLS TO BE IN CONTACT WITH THE TAB FOR THE LENGTH OF THE ROLL BEHIND THE LEAD-IN.
- △3 THE TIN PLATING MAY BE MATTE POST-PLATED OR REFLOWED PRE-PLATED TIN WHICH HAS A BRIGHTER APPEARANCE.



<del>OBSOLETE</del>	<del>POST-TIN</del>	18-14	.032 ±.001	62276-2
	△3 TIN	18-14	.032 ±.001	62276-1
	FINISH	WIRE SIZE	TAB THK.	PART NO

THIS DRAWING IS A CONTROLLED DOCUMENT.		DWN JR RUTH 5/28/86	<b>STE</b> TE Connectivity														
DIMENSIONS: INCHES		CHK G YETTER 5/28/86															
TOLERANCES UNLESS OTHERWISE SPECIFIED:		APVD C MEYERS 5/28/86	NAME .250 SERIES FASTON PIGGY-BACK RECEPTACLE														
<table border="1"> <tr><td>0 PLC</td><td>± -</td></tr> <tr><td>1 PLC</td><td>± -</td></tr> <tr><td>2 PLC</td><td>± -</td></tr> <tr><td>3 PLC</td><td>± .015</td></tr> <tr><td>4 PLC</td><td>± -</td></tr> <tr><td>ANGLES</td><td>± -</td></tr> </table>		0 PLC	± -	1 PLC	± -	2 PLC	± -	3 PLC	± .015	4 PLC	± -	ANGLES	± -	PRODUCT SPEC -	APPLICATION SPEC		
0 PLC	± -																
1 PLC	± -																
2 PLC	± -																
3 PLC	± .015																
4 PLC	± -																
ANGLES	± -																
MATERIAL BRASS		FINISH SEE TABLE	114-2082	SIZE A3	CAGE CODE 00779												
CUSTOMER DRAWING			WEIGHT 0.000000	DRAWING NO C-62276	RESTRICTED TO -												
			SCALE 4:1	SHEET 1 OF 1	REV G3												