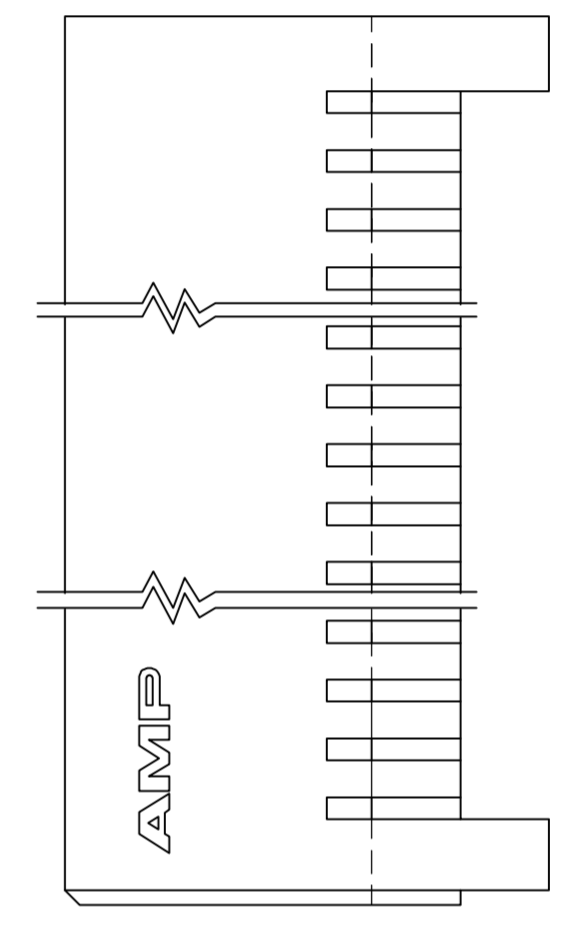
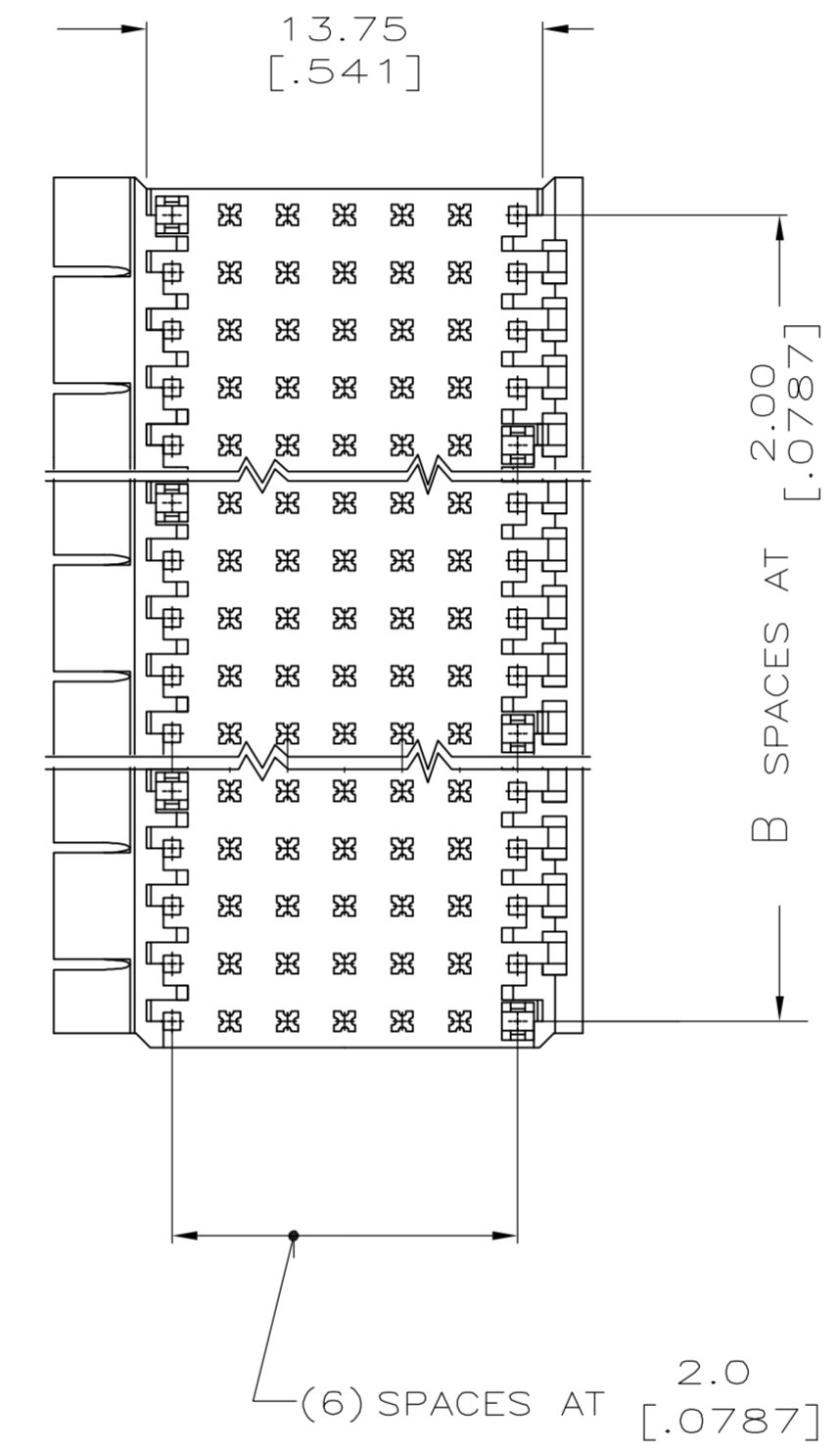
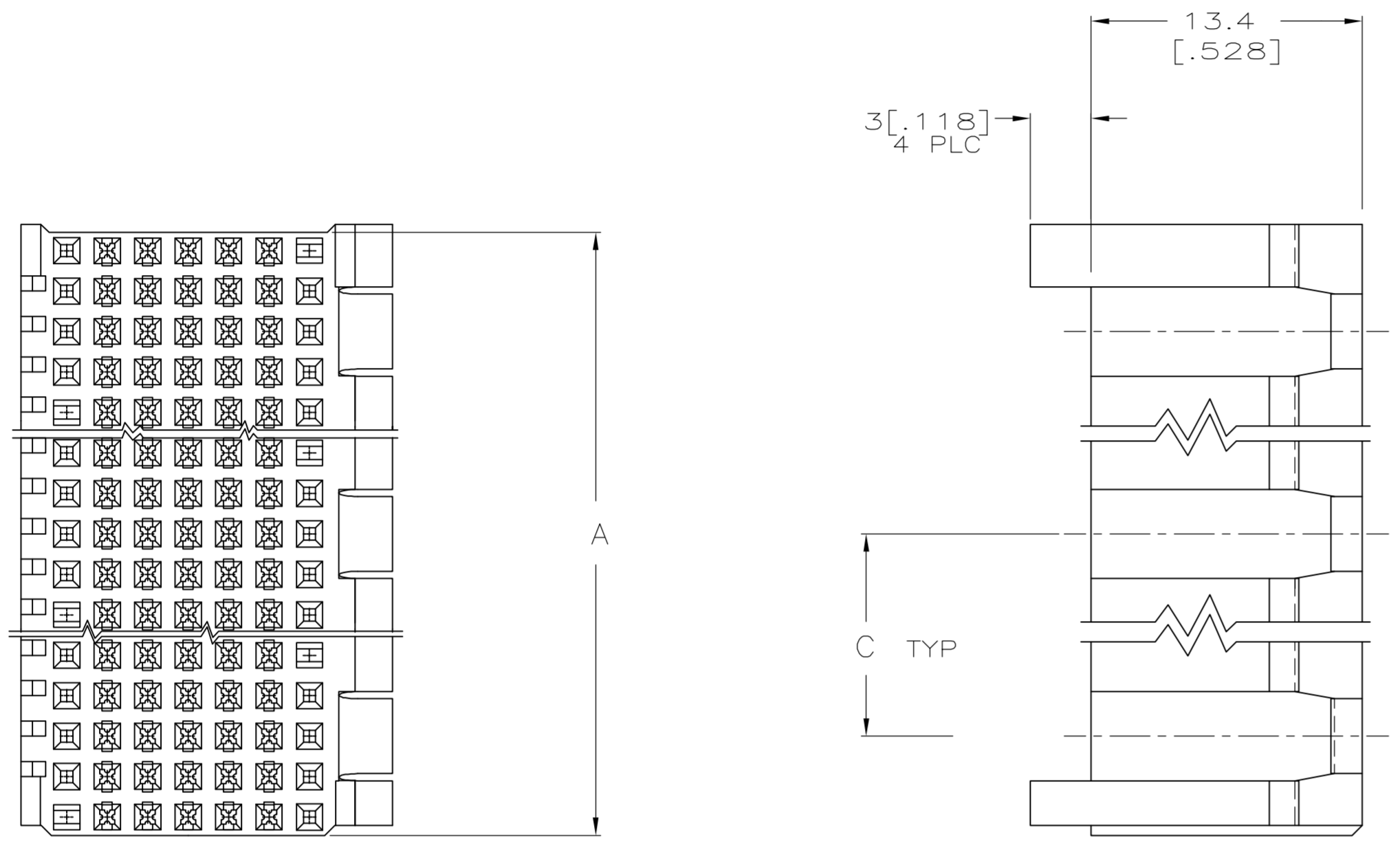
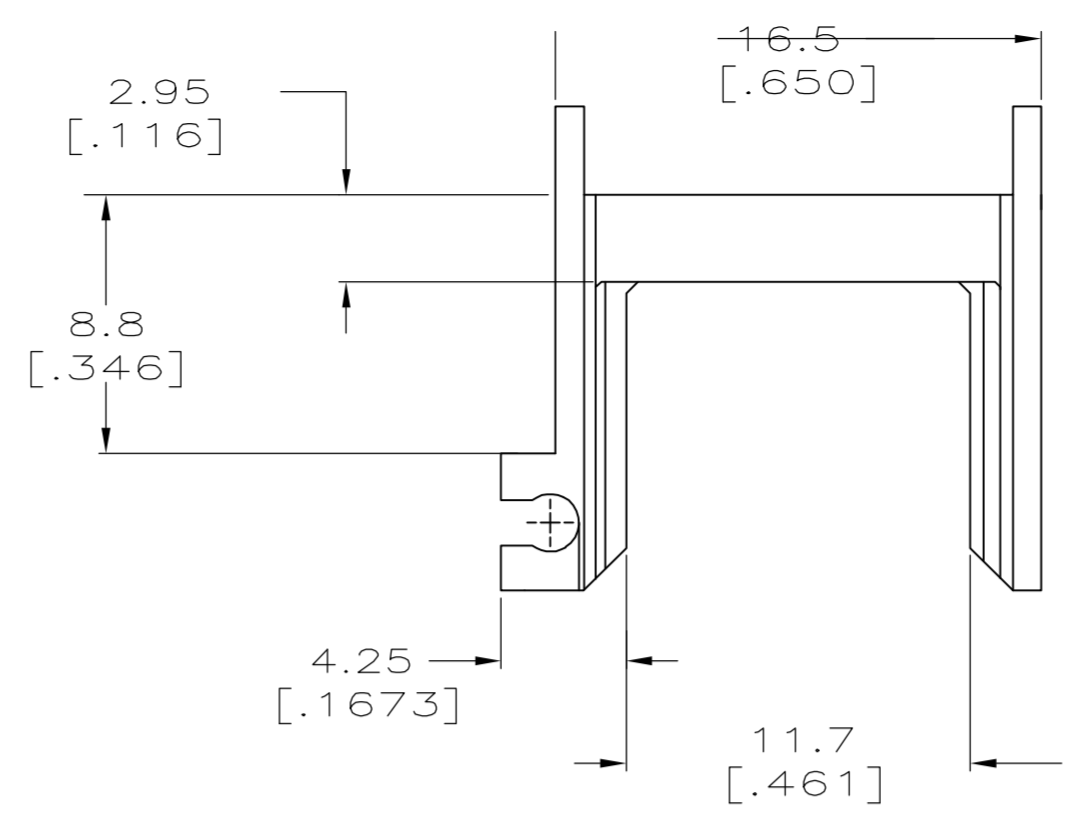


LOC		DIST		P		F		ZONE		LTR		REVISIONS			
CF	39											DESCRIPTION	DATE	APPD	
												A1	ADD ROHS NOTE.	23NOV05	TS/CA



9.995 [.3935]	18	37.775±0.05 [1.4872±.0020]	19 X 5	621763-5
9.995 [.3935]	10	21.775±0.05 [.8572±.0020]	11 X 5	621763-4
-	5	11.775±0.050 [.4636±.0020]	6 X 5	621763-3
-	3	7.775±0.050 [.3061±.0020]	4 X 5	621763-2
-	4	9.775±0.050 [.3848±.0020]	5 X 5	621763-1
C	B	A	NO POSN	PART NO

1. PRODUCT AND PROCESSING MUST MEET REQUIREMENTS OF TYCO ELECTRONICS STANDARD 230-702.

THIS DRAWING IS A CONTROLLED DOCUMENT FOR AMP INCORPORATED. IT IS SUBJECT TO CHANGE AND THE CONTROLLING ENGINEERING ORGANIZATION SHOULD BE CONTACTED FOR THE LATEST REVISION.

DO NOT SCALE PRINT. UNLESS SPECIFIED DIMENSIONS IN mm [INCHES] TOLERANCES ON : 2 PLC DEC ±2 [.008] 3 PLC DEC ± - ANGLES ± -		DR 4-8-96 T.SMITH		PART NO	
MATERIAL THERMOPLASTIC		CHK 4-8-96 C.ADAMS		AMP Incorporated Harrisburg, PA 17105-3608	
FINISH COLOR BLACK		APPD 4-8-96 C.ADAMS		NAME SHROUD, 2MM HM W/STAND-OFFS	
WEIGHT -		APPD 4-8-96 T.SMITH		SIZE D 00779	
		PRODUCT SPEC -		CAGE CODE G-621763	
		APPLICATION SPEC -		DRAWING NO G-621763	
		SCALE 4:1		SHEET 1 OF 1	