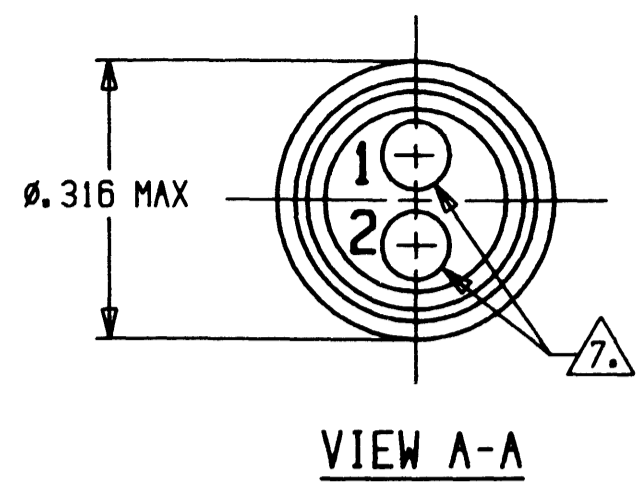
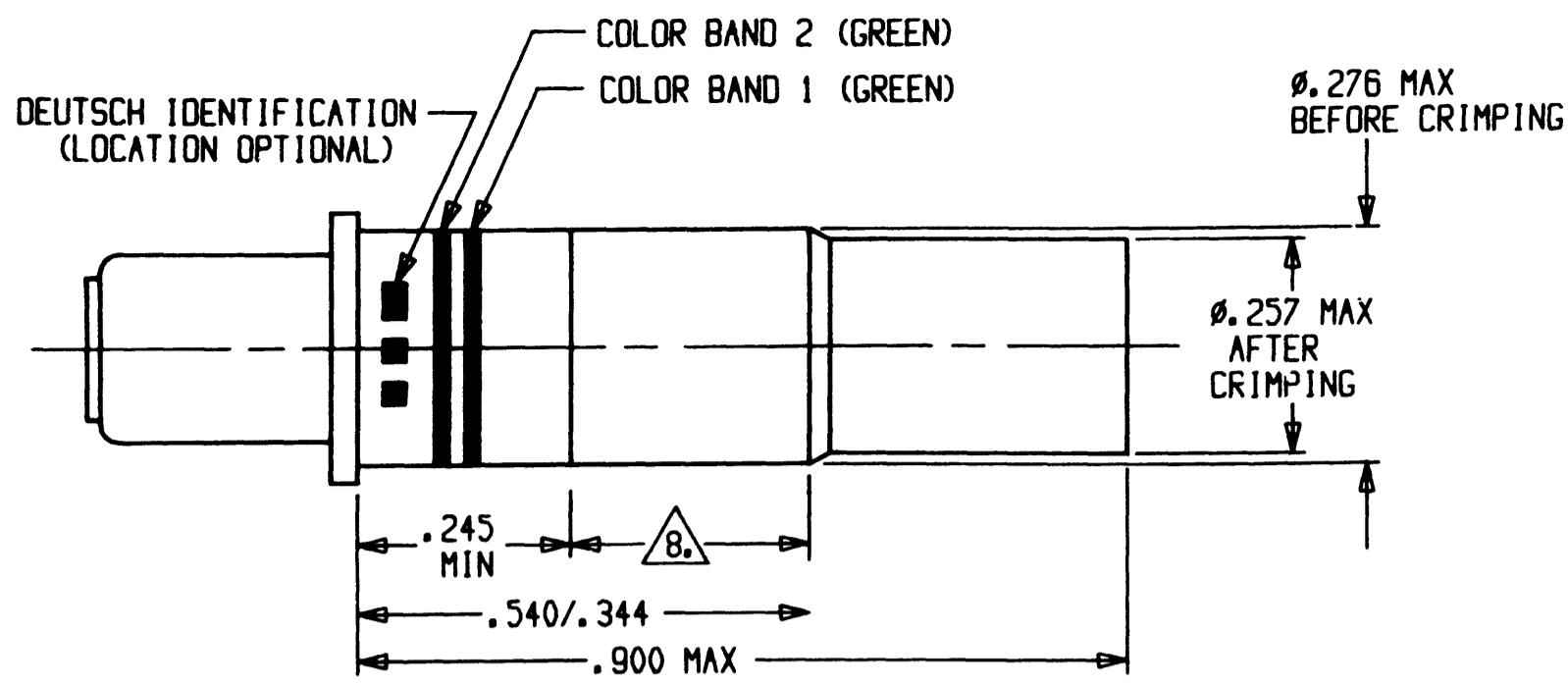
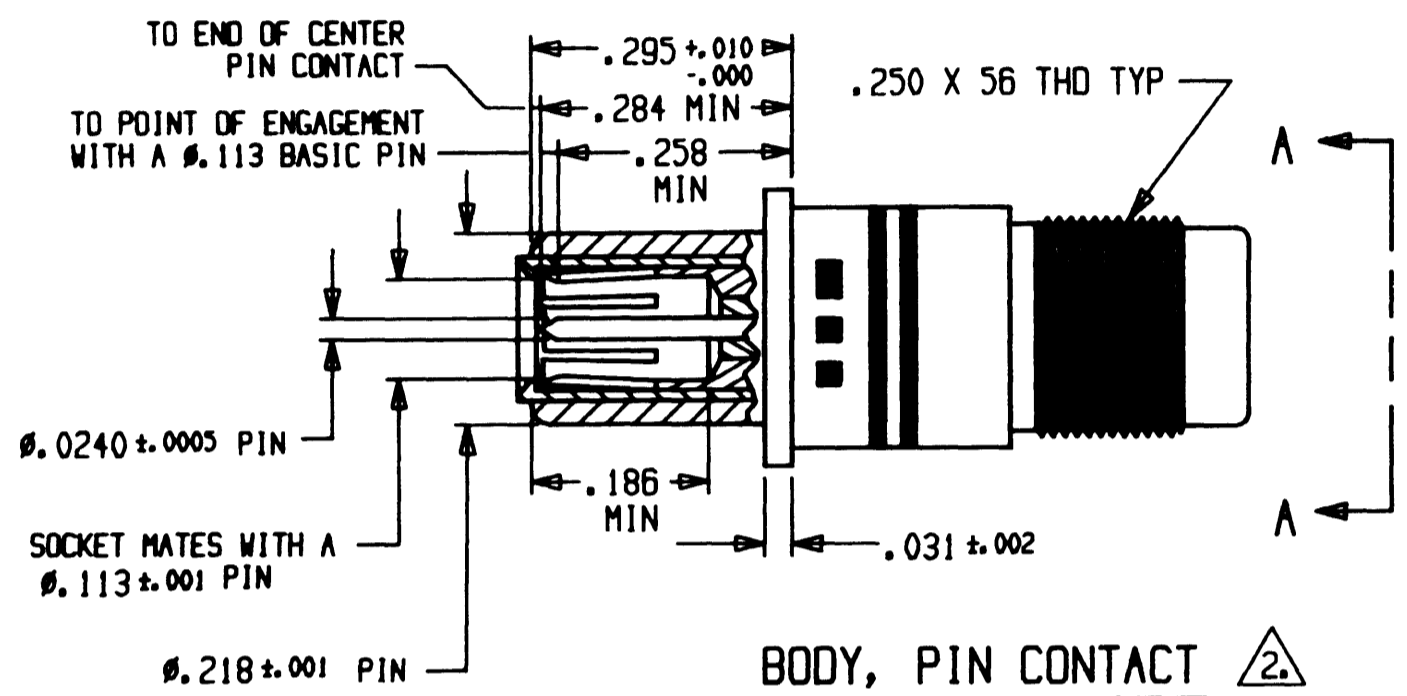


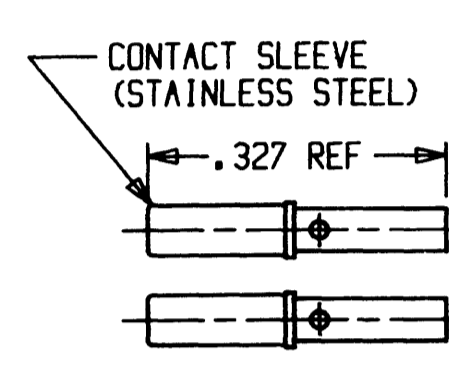
REVISIONS			
SYM	DESCRIPTION	DATE	APPROVED
C	REVISED PER E.O. 12813	12-8-88	JLB



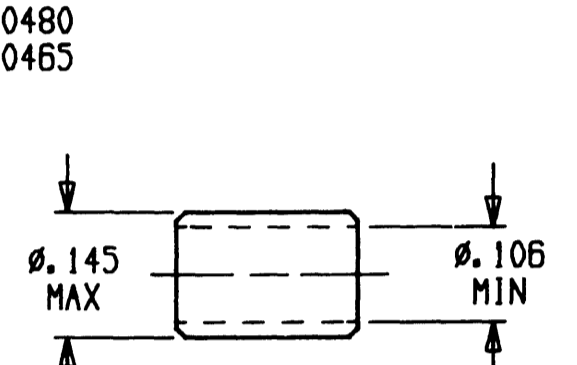
ASSEMBLY, PIN CONTACT



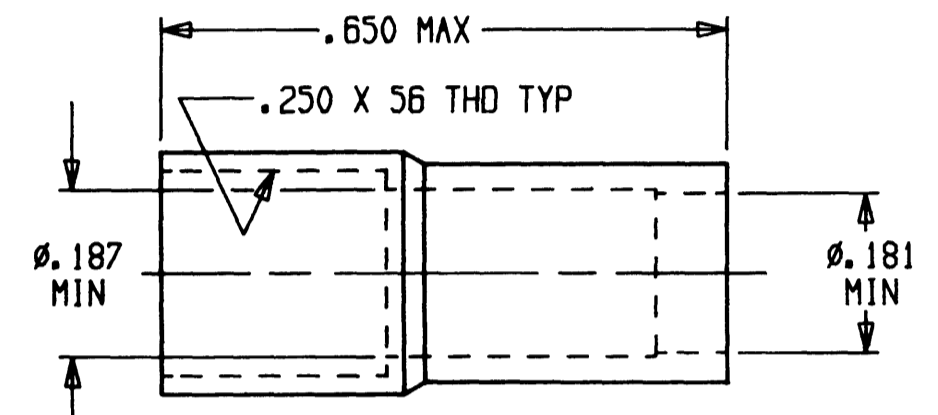
BODY, PIN CONTACT



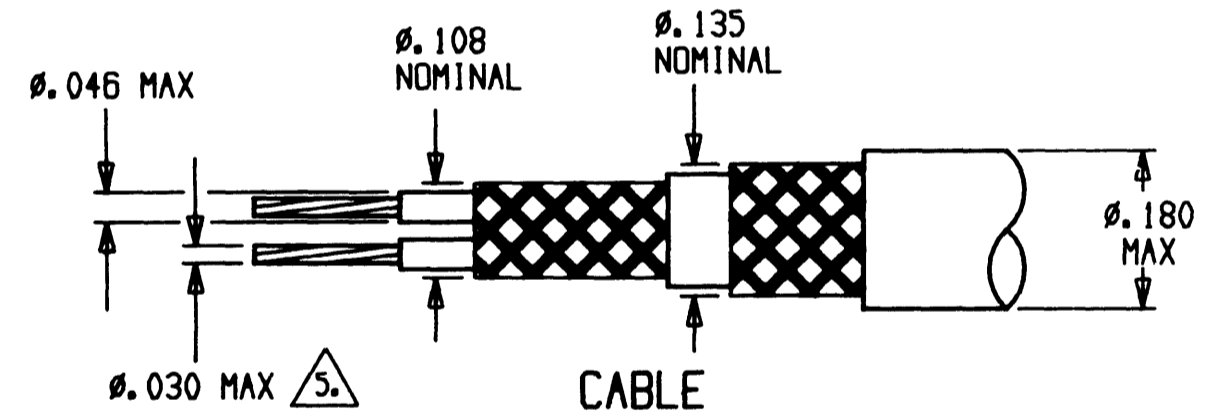
CONTACTS, SOCKET (2 REQUIRED)  
M39029/22-191  
MFG. P/N CTS-522/22



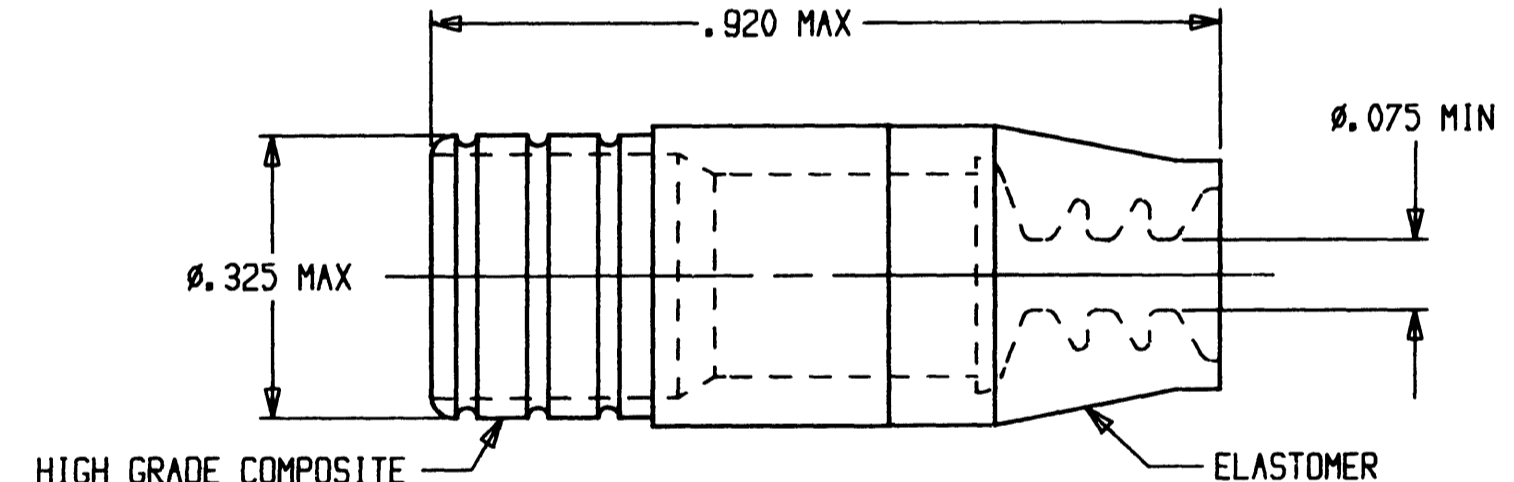
SLEEVE, SUPPORT



SLEEVE, CRIMP



CABLE ACCOMMODATED DOUBLE SHIELD



BOOT, WIRE SEALING

REV	C	6162-289-0877
-----	---	---------------

9. FOR ASSEMBLY INSTRUCTIONS, SEE FORM 997.
8. IN AREA SHOWN, THE DIAMETER MAY GROW TO .290 MAX. AFTER CRIMPING.
7. CAVITY MARKED "1" GOES TO INNER CONTACT, CAVITY MARKED "2" GOES TO INTERMEDIATE CONTACT.
6. WIRE SEALING BOOT UTILIZED WITH THESE CONTACTS WILL SEAL ON CABLE WITH A MIN. JACKET DIA. OF .105 AND A MAX. OF .276. SMALLER DIA. CABLE MUST BE INCREASED WITH THE USE OF HEAT SHRINKABLE TUBING.
5. .030 DIA. SHOWN IS FOR STRANDED CONDUCTOR. SOLID CONDUCTOR MAY BE SLIGHTLY LARGER.
4. CONTACTS PLATED .000050 MIN. GOLD THICKNESS PER MIL-G-45204.
3. ALL COMPONENTS MADE OF HIGH GRADE COPPER ALLOY EXCEPT AS SHOWN.
2. DESIGNATES PARTS ARE SHIPPED LOOSE.
1. DIMENSIONS ARE IN INCHES. DIMENSIONS SHOWN APPLY AFTER PLATING.

NOTE:

CONTACT	CABLE ACCOMMODATED	TEST CURRENT [AMPERES]	CONTACT RESISTANCE			CRIMP TENSILE STRENGTH AXIAL LOAD [POUNDS, MINIMUM]	DIELECTRIC WITHSTANDING VOLTAGE		
			MAXIMUM VOLTAGE DROP [MILLIVOLTS]				CONTACTS	ALTITUDE	TEST VOLTAGES A.C. rms
			25°C+3°C-0°C	175°C+3°C-0°C	INITIAL				
CENTER	GC875TM24H	1.0	55	66	94	8	CENTER TO INTERMEDIATE	SEA LEVEL	1000
INTERMEDIATE	GC875TM24H	1.0	55	66	94	8	—	—	—
OUTER	GC875TM24H	12.0	75	90	128	25	INTERMEDIATE TO OUTER	SEA LEVEL	500

TOLERANCES UNLESS OTHERWISE SPECIFIED DECIMALS XXX ± .005 ANGLES: ± 0° 30' 0" TIR .010 PARTS TO BE FREE OF BURRS AND SHARP EDGES		SIGNATURE & DATE	
MATERIAL	FINISH	DR	R GROSS 4-4-88
		CHK	P.N.L. 4-22-88
		PE	R. Gross 4-4-88
		APPD	
		SCALE	NONE
		WT	

CONTACT, PIN  
ELECTRICAL CONNECTOR  
CONCENTRIC TWINAX  
SIZE 8  
FOR D38999 CONNECTOR

ENVELOPE

CP	MATL CODE
DEUTSCH ENGINEERED CONNECTING DEVICES Municipal Airport Banning, California	
C	6162-289-0877
DWG SIZE	CODE 11139 SHEET 1 OF 1

6162289A0877E