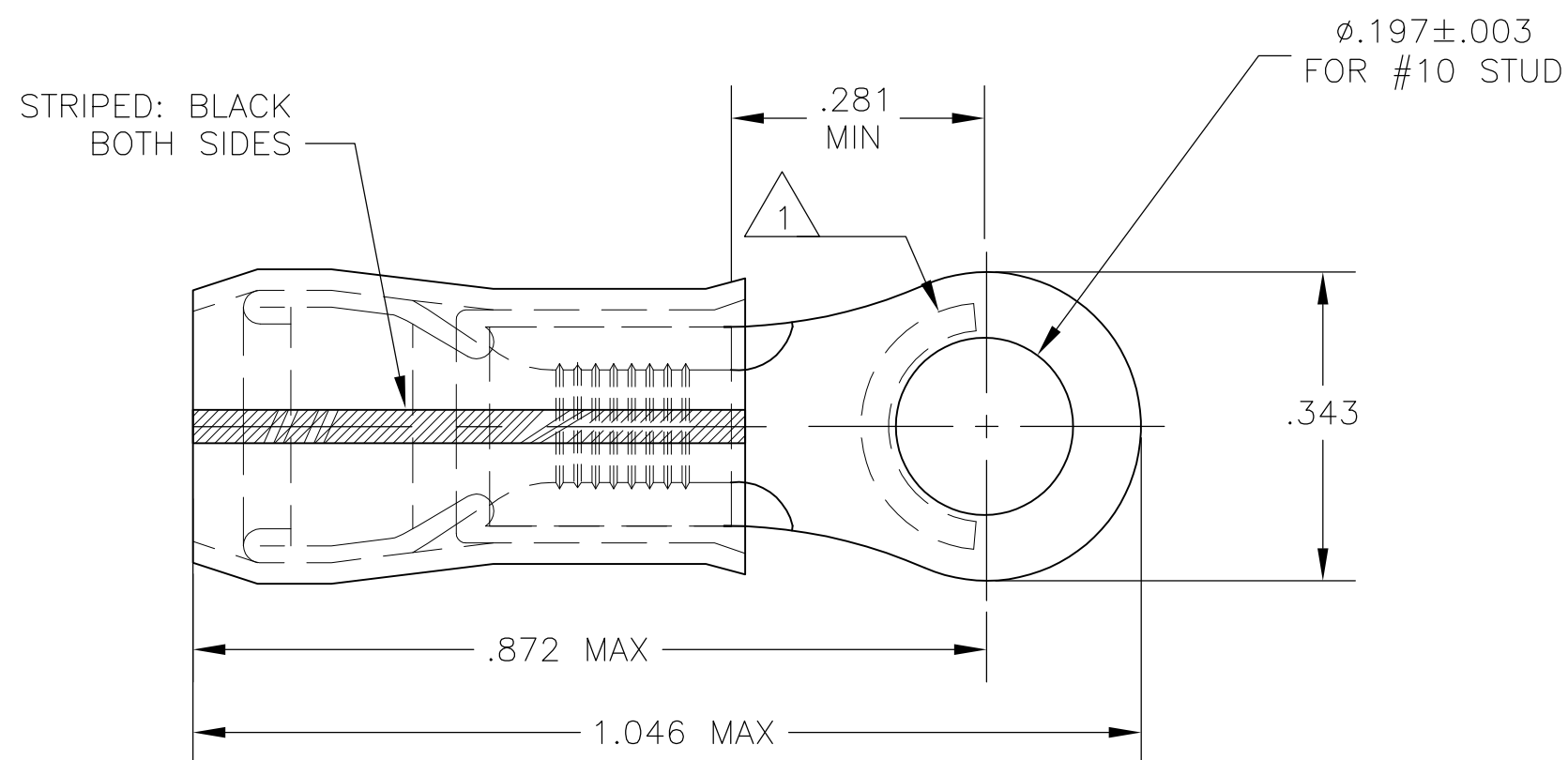


THIS DRAWING IS UNPUBLISHED. RELEASED FOR PUBLICATION  
 © COPYRIGHT - By - ALL RIGHTS RESERVED.

LOC	DIST	REVISIONS					
G	14	P	LTR	DESCRIPTION	DATE	DWN	APVD
			C2	REVISED PER ECO-14-015178	09OCT2014	NK	DR



- 1 STAMP "AMP 16-14 HD\*" LOCATED APPROX AS SHOWN.
- 2 TONGUE MATERIAL THK IS .050 MAX
- 3 FOR .230 MAX WIRE INSULATION DIA.

PRELIMINARY	2500	TAPE & REEL	BODY & SLEEVE: COPPER PER ASTM B152 TIN LEAD (93-7) PLATE PER ASTM B545 (3% MIN LEAD CONTENT)  INSULATION: PVF2, COLOR - NATURAL	2-53983-1
	500	LOOSE PIECE		53983-1
QTY	PACKAGE TYPE	MATERIAL & FINISH	PART NUMBER	

THIS DRAWING IS A CONTROLLED DOCUMENT.		DWN jr_ruth 14SEP04	TE Connectivity			
DIMENSIONS: INCHES		CHK T MICHELUTTI 14SEP04				
TOLERANCES UNLESS OTHERWISE SPECIFIED: 0 PLC ± - 1 PLC ± - 2 PLC ± - 3 PLC ± .008 4 PLC ± - ANGLES ± 5°		APVD T MICHELUTTI 14SEP04	NAME WIRE TERMINAL PVF2 - PIDG - RING TONGUE WIRE SIZE : 16-14 HD			
MATERIAL		PRODUCT SPEC	SIZE	CAGE CODE	DRAWING NO	RESTRICTED TO
FINISH		APPLICATION SPEC	A3	00779	C-53983	-
CUSTOMER DRAWING			WEIGHT	SCALE	SHEET	REV
			-	5:1	1 OF 1	C2