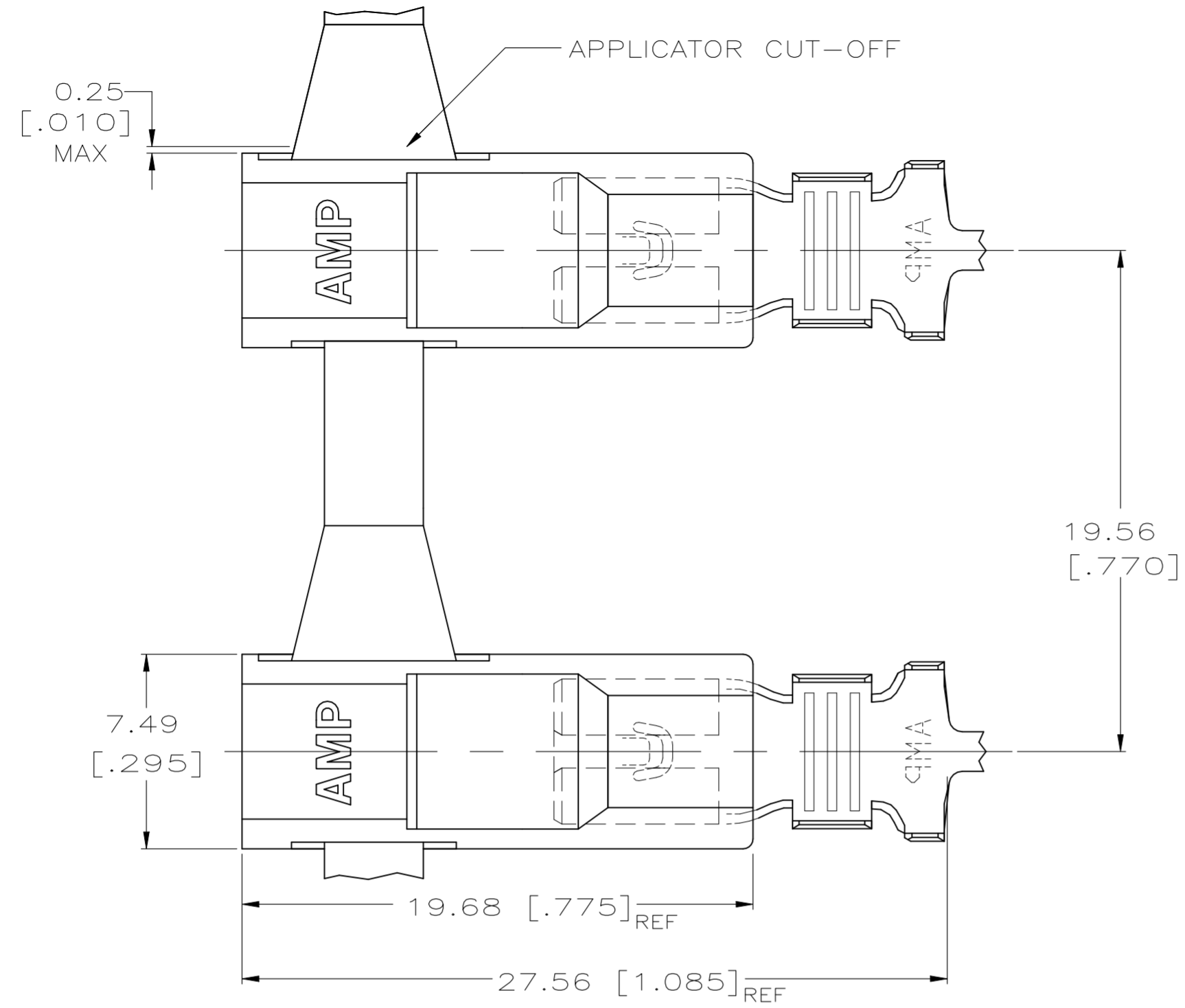
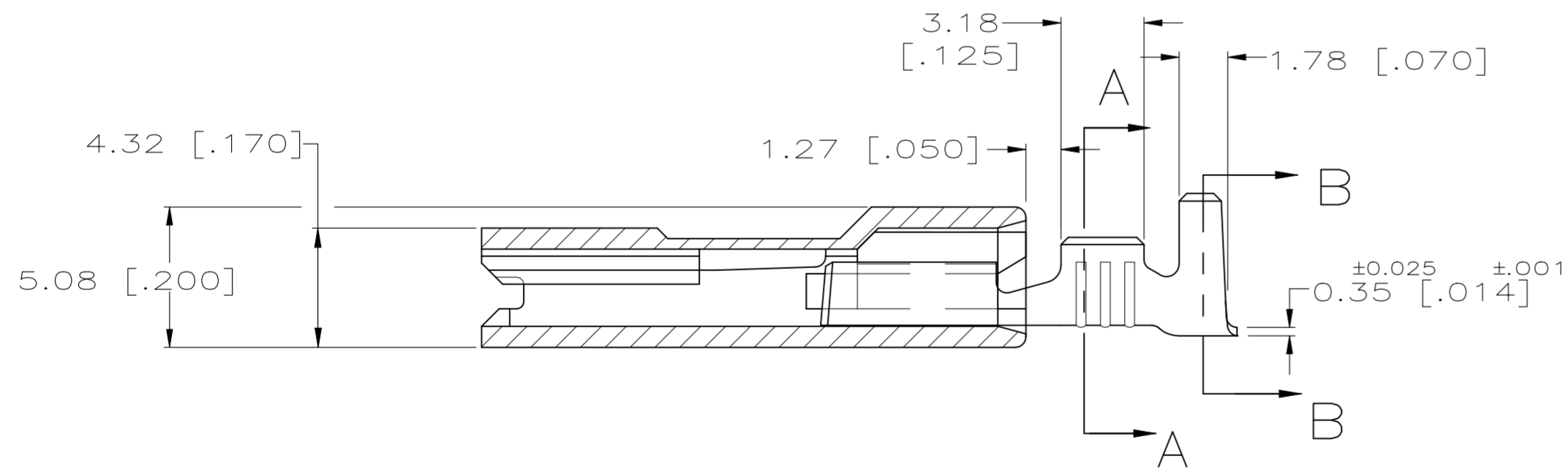
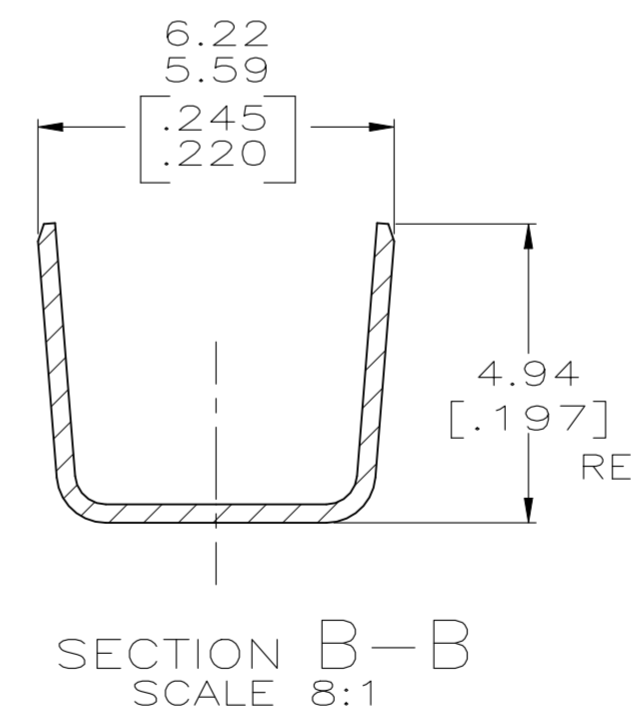
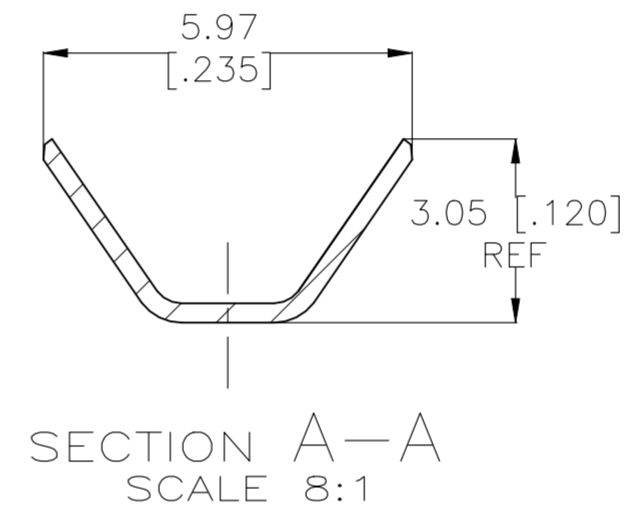


REVISIONS					
P	LTR	DESCRIPTION	DATE	DWN	APVD
D1		REVISED PER ECR-22-160893	15DEC2022	DB	BW



- 1 WIRE RANGE IS [#18-#16 OR TWO #18'S OR TWO #20'S] AWG.
- 2 INSULATION RANGE IS 2.67-5.33 DIA OR TWO AT 2.67 DIA MAX, [.105-.210 OR TWO AT .105 DIA MAX].
- 3 TIN PLATE PER MIL-T-10727.
- 4 GLOW WIRE APPROVED; CONTACT TE ENGINEERING FOR SPECIFICATION (ALL WALL THICKNESSES ARE BETWEEN 0.4-3.0 [.015-.118])
- 5 PRELIMINARY - NOT FOR PRODUCTION



3	TIN PLATE	2	INSULATION RANGE	1	WIRE SIZE	0.508 [.020]	521995-2	4	
-	TERMINAL FINISH					MATING TAB THK ±0.025 [±.001]	521995-1	5	
THIS DRAWING IS A CONTROLLED DOCUMENT.						DWN RAGHAVENDRA 31JAN07			
DIMENSIONS: mm [INCHES]						CHK G.D.PORTA 31JAN07			
TOLERANCES UNLESS OTHERWISE SPECIFIED:						APVD G.D.PORTA 31JAN07	PRODUCT SPEC		
0 PLC ± -						PRODUCT SPEC	108-1285		
1 PLC ± -						APPLICATION SPEC	114-2124		
2 PLC ± -						WEIGHT	0.000000		
3 PLC ± 0.25 [.010]						SIZE	A2		
4 PLC ± -						CAGE CODE	00779		
ANGLES ± -						DRAWING NO	C=521995		
MATERIAL TERMINAL - BRASS HOUSING - V2 NYLON						FINISH TERMINAL - SEE TABLE HOUSING - NATURAL(WHITE)	RESTRICTED TO	-	
CUSTOMER DRAWING						SCALE	5:1		
						SHEET	1 of 1		
						REV	D1		