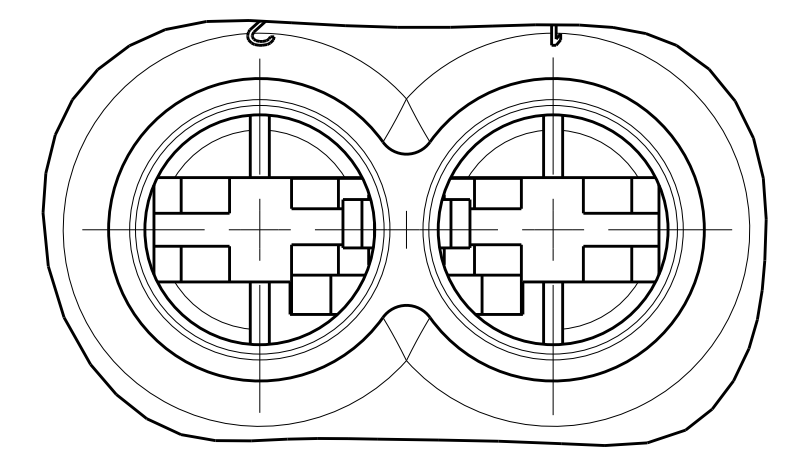
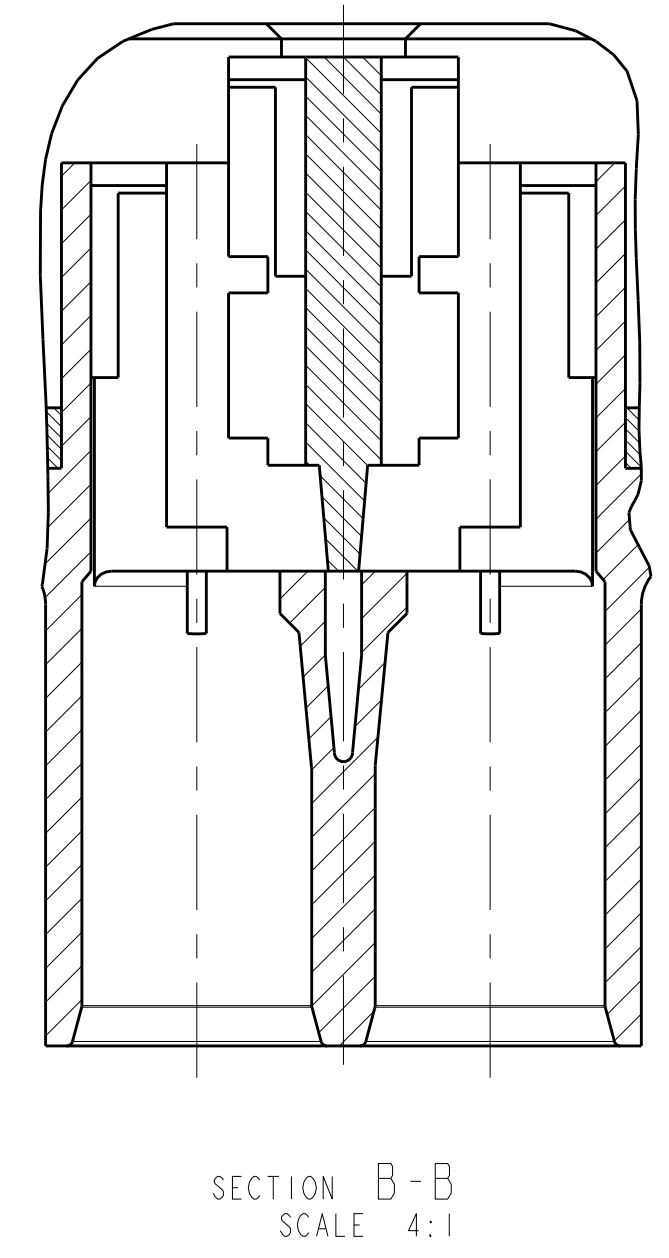
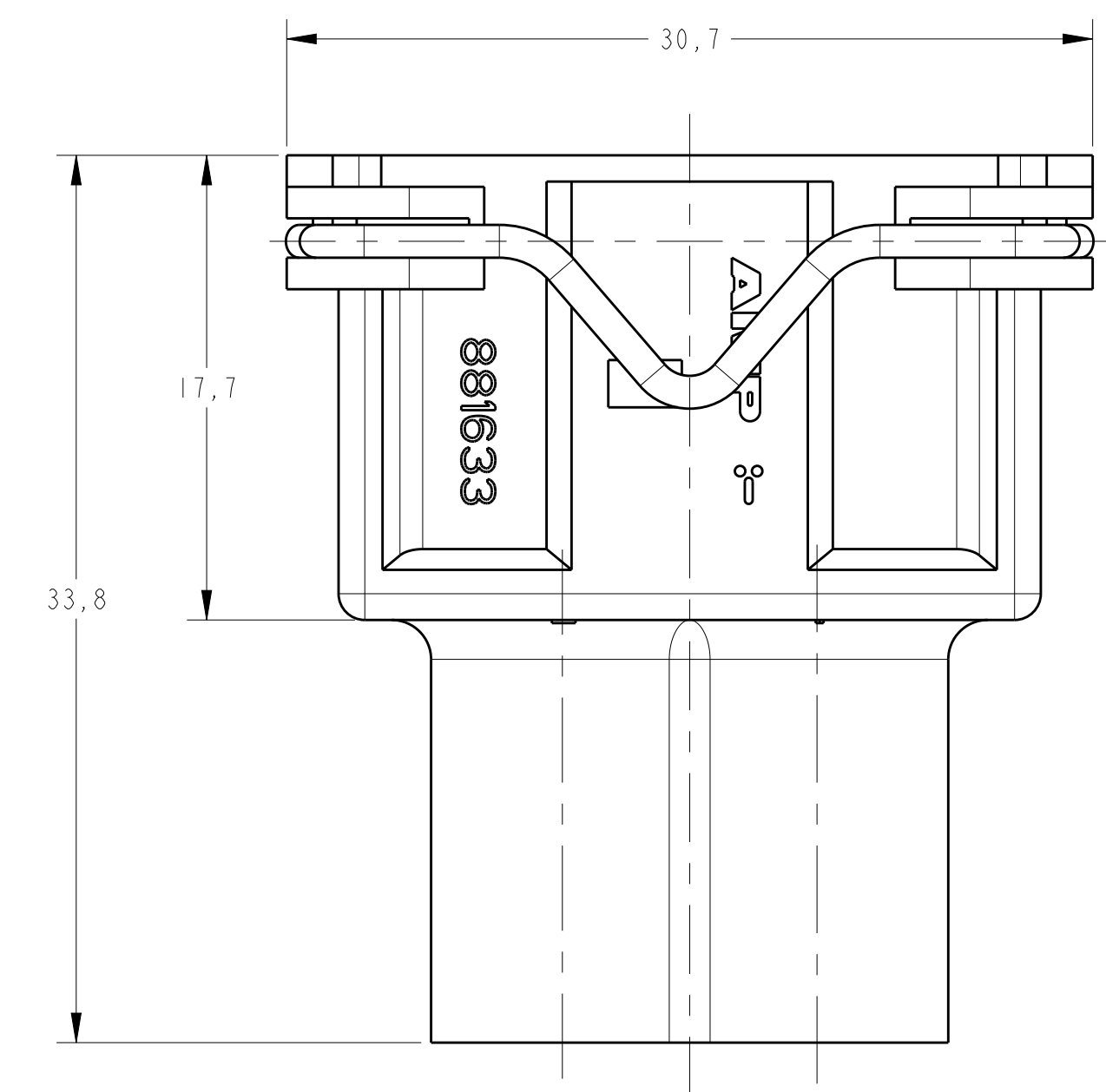
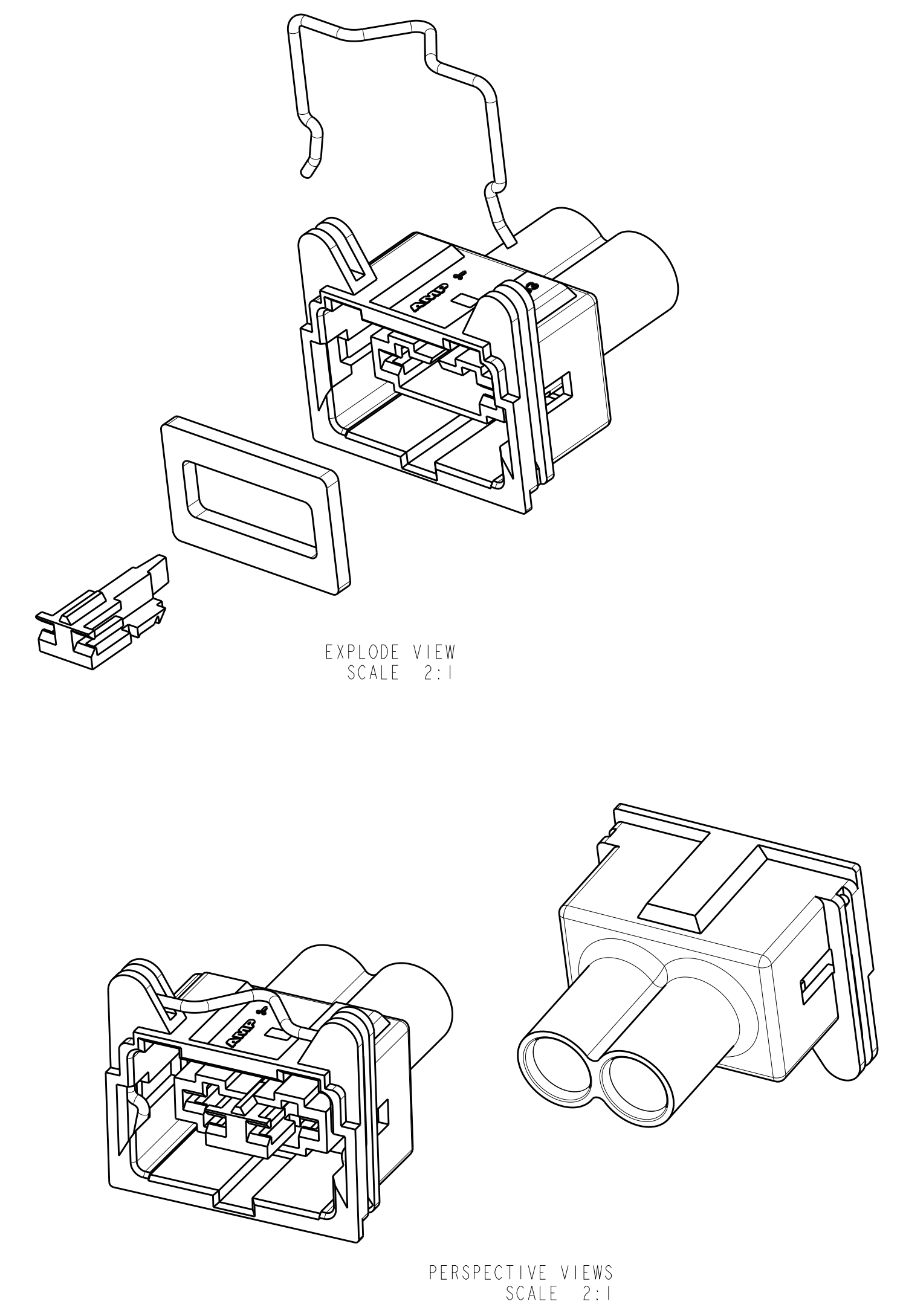
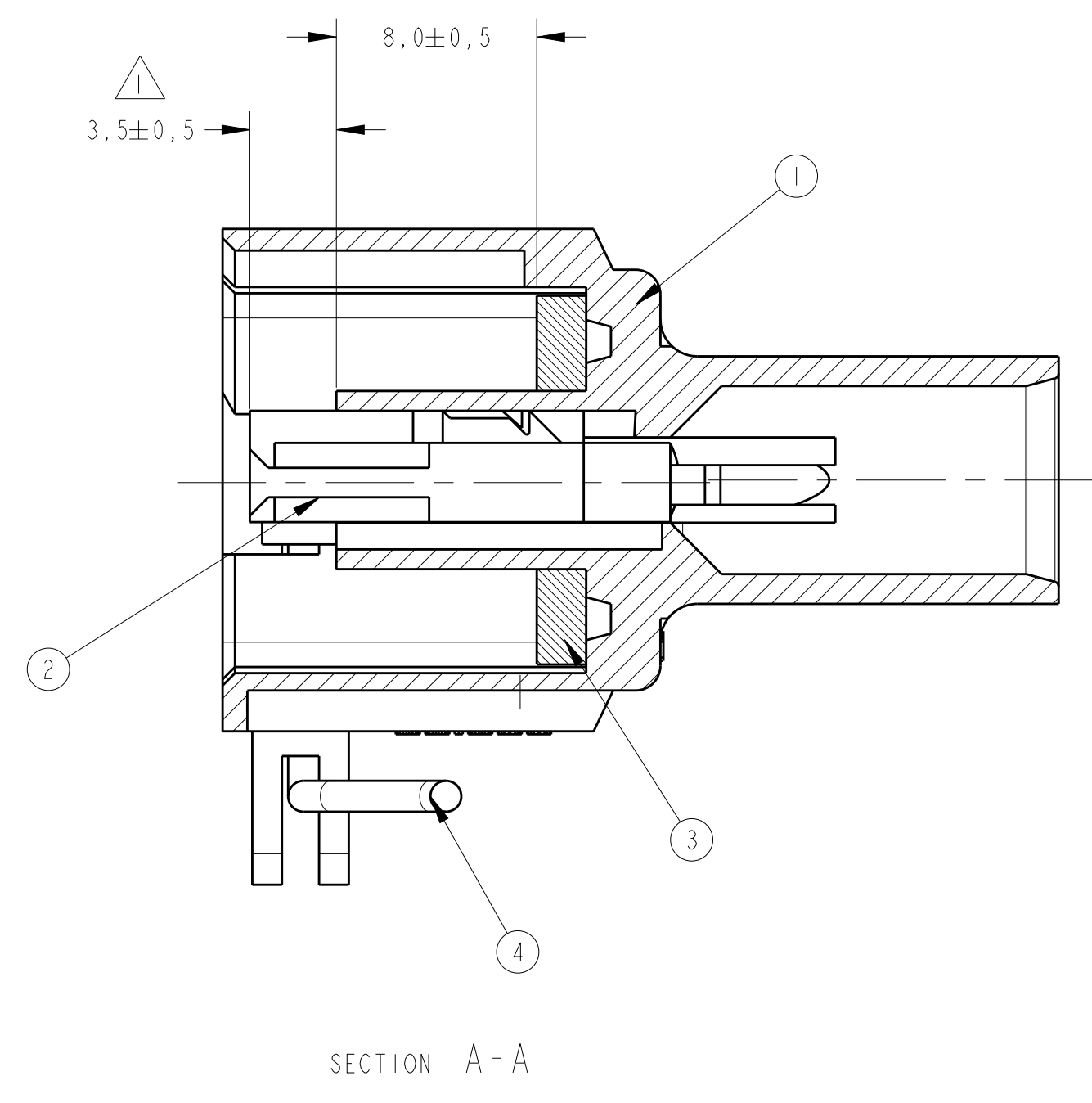
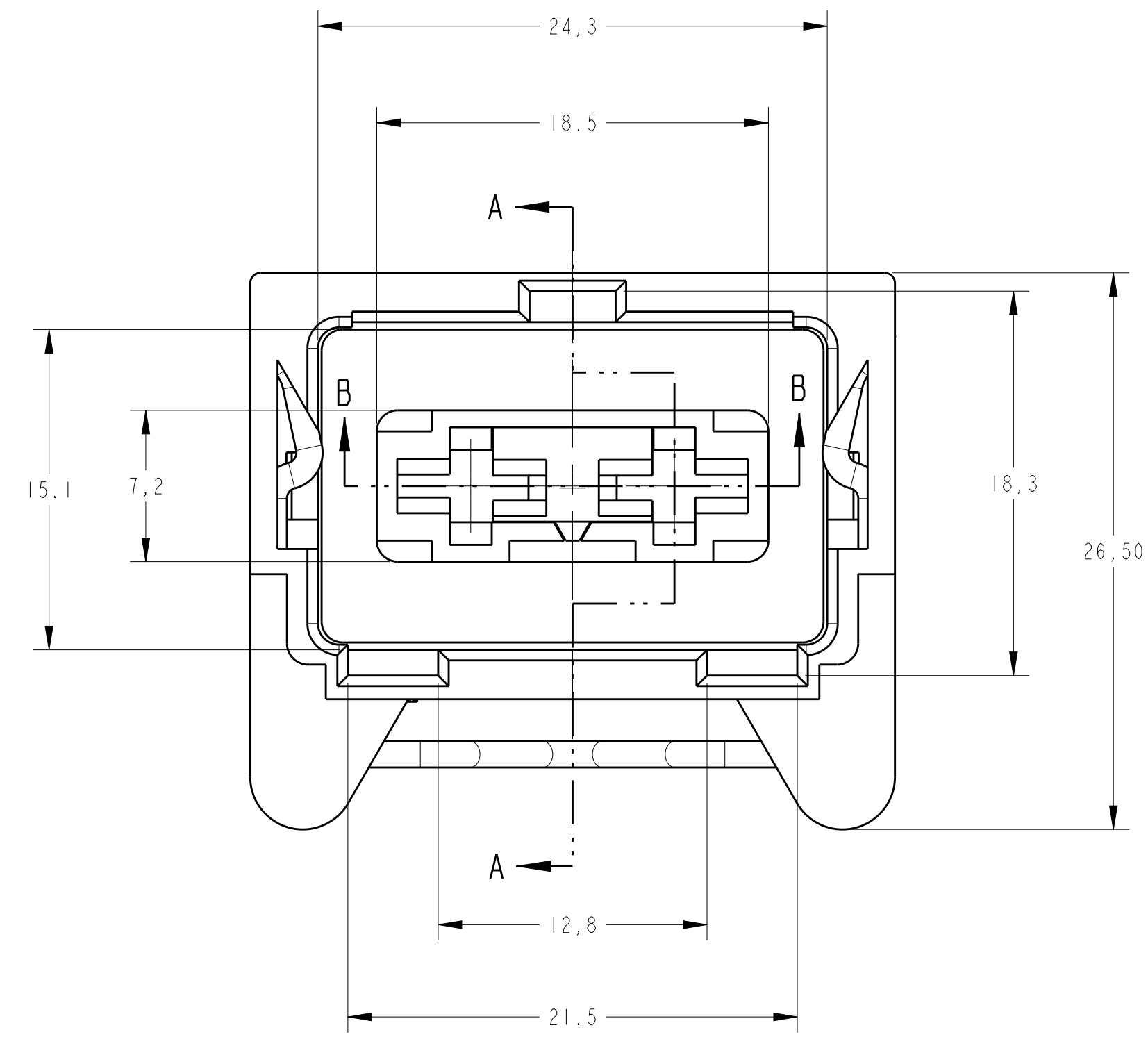


REVISIONS				
P.	LTN.	DESCRIPTION	DATE	DMN. / APVD.
B1		REVISED DRAWING ECO-16-002321	18FEB2016	NCL / GOJ



- 1 - OS ITENS 1 E 2 SÃO FORNECIDOS COMO MOSTRADO. ITENS 1 AND 2 ARE SUPPLIED AS SHOWN.
- 2 - DEVERÃO CONSTAR GRAVAÇÕES: MARCA REGISTRADA AMP, NÚMERO DA PEÇA AMP, CÓDIGO DO PAÍS PRODUTOR, NÚMERO DE CIRCUITO E NÚMERO DA CAVIDADE. STAMP THAT MUST BE EVIDENT: TRADEMARK AMP, PART NUMBER AMP, MANUFACTURER COUNTRY CODE, CIRCUIT NUMBER AND CAVITY NUMBER.
- 3 - CAVIDADE PARA TERMINAL STD. POWER TIMER COM WIRE SEAL. CAVITY FOR STD. POWER TIMER WITH WIRE SEAL.

REQ. PER ASSY	ITEM	DESCRIPTION	MATERIAL	FINISH
4	4	SPRING	AÇO INOX - SST	—
3	3	RUBBER SEAL	SILICONE	LARANJA - ORANGE
2	2	SPACER	PBT	AMARELO - YELLOW
				VERDE - GREEN
				AMARELO - YELLOW
				AZUL - BLUE
				MARROM - BROWN
				CINZA CLARO - LIGHT GRAY
				VERMELHO - RED
				NATURAL
		HSG, 2 POSN, STD POWER TIMER	PBT +30%F.V.	PRETO - BLACK

THIS DRAWING IS A CONTROLLED DOCUMENT.		DMN. E. J. G. SILVA 16FEB2011	TE Connectivity
TOLERANCES UNLESS OTHERWISE SPECIFIED:		CH. J. R. GOLDSCHMIDT 16FEB2011	
DIMENSIONS: mm	0 PLC ±0.3	APVD. A. VICCHINI 16FEB2011	NAME HOUSING ASSY, 2POSN, STD. POWER TIMER
	1 PLC ±0.3		PRODUCT SPEC
	2 PLC ±0.3		APPLICATION SPEC
	3 PLC ±0.3		WEIGHT
	4 PLC ±0.3		SIZE CAGE CODE DRAWING NO. RESTRICTED TO
	ANGLES ±0.5		A1 00779 C=444075
MATERIAL SEE TABLE VER TABELA	FINISH SEE TABLE VER TABELA	CUSTOMER DRAWING	SCALE 2:1 SHEET 1 OF 1 REV B1

