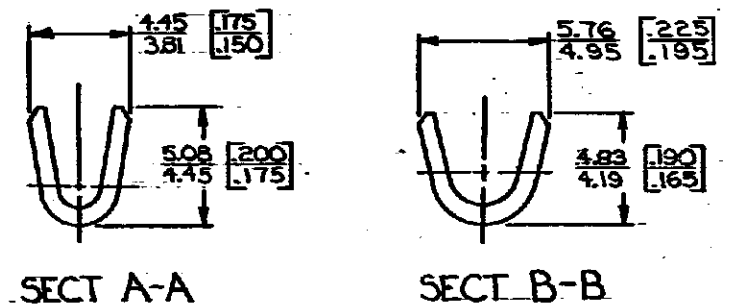
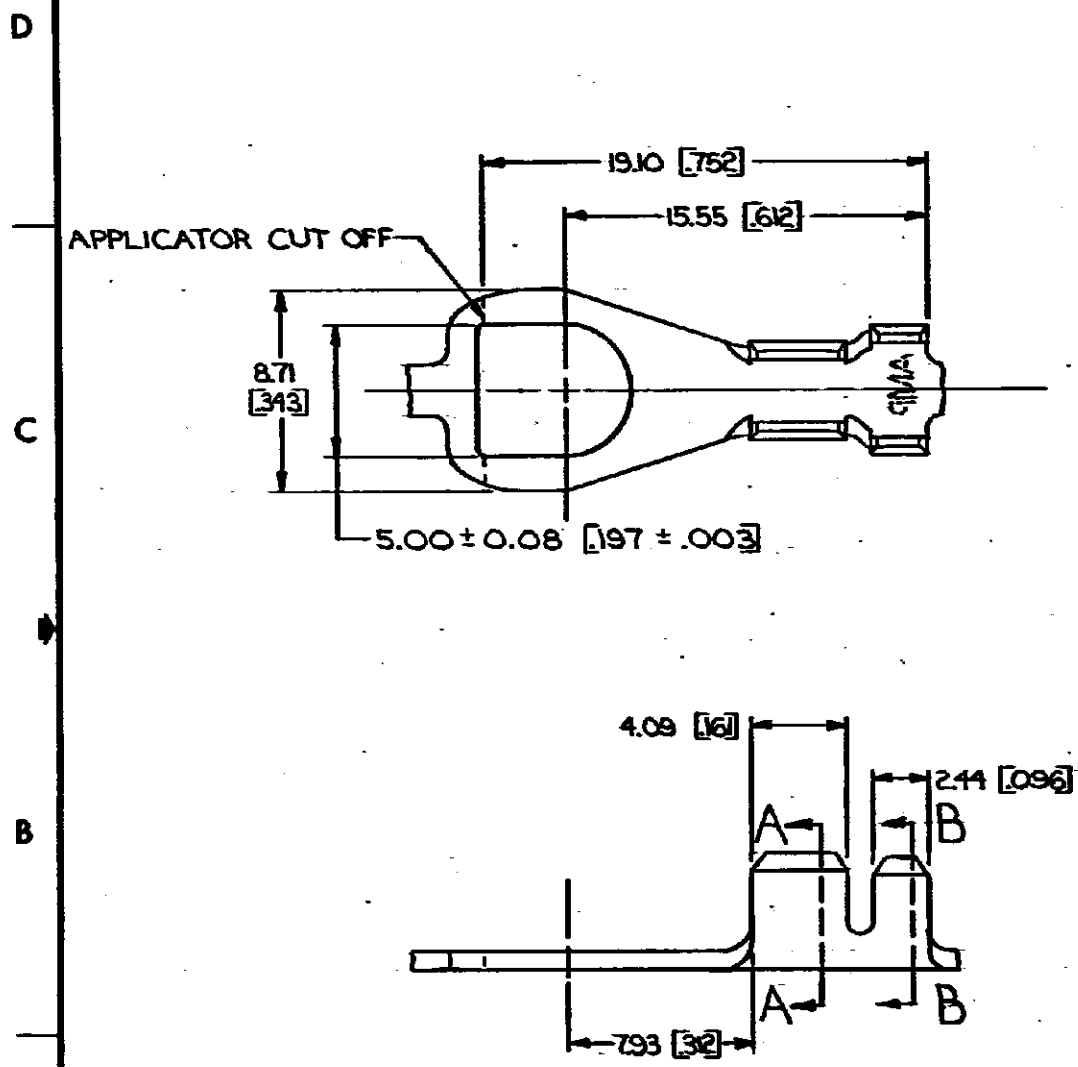


DRAWING MADE IN THIRD ANGLE PROJECTION

© COPYRIGHT 1964 BY AMP INCORPORATED, HARRISBURG, PA.
 ALL INTERNATIONAL RIGHTS RESERVED. AMP INCORPORATED PRODUCTS
 COVERED BY U. S. AND FOREIGN PATENTS AND/OR PATENTS PENDING.

1 LOC AF DIST 50

REVISIONS					
P	ZONE	LTR	DESCRIPTION	DATE	APPROVED
		D	REDRAWN & REVISED A-3943	4/2/78	
		E	REVISED AF0230	8/2/78	JR/47
		F	OBSOLETE -1 AF 1556	6/3/76	JR/64
		G	REV PER AF5641A	11/1/88	DKS/1076



STUD SIZE	WIRE RANGE	INSULATION RANGE	FINISH	MATERIAL	PART NO
#10	0.8-2.0 mm ² [18-14]	2.54-3.56 [100-.140]	PRE-NICKEL	0.79 [03] STEEL	40808-1
			TIN	0.76 [030] BRASS	40808

1. CONTINUOUS STRIP ON REELS.
 2. DIMENSIONS IN BRACKETS ARE IN INCHES.

METRIC

UNLESS OTHERWISE SPECIFIED DIMENSIONS ARE IN MILLIMETERS. TOLERANCES ON: DECIMALS ± 0.03 [015] ANGLES ± 1°		CONTRACT NO.		AMP INCORPORATED Harrisburg, Pa.	
MATERIAL SEE TABLE		DR. <i>L. Magano</i> 4/20/78 CHK. <i>G. Yetter</i> 7/20/78		NAME SPADE	
FINISH SEE TABLE		APPR. <i>R.P. Frantz</i> 8-10-78 APPR. <i>G. Zinke</i> 8-10-78		SIZE B	
		DSGN APPD.		CODE IDENT NO 00779	
		OTHER APPD.		DRAWING NO 40808	
				SCALE	
				SHEET	