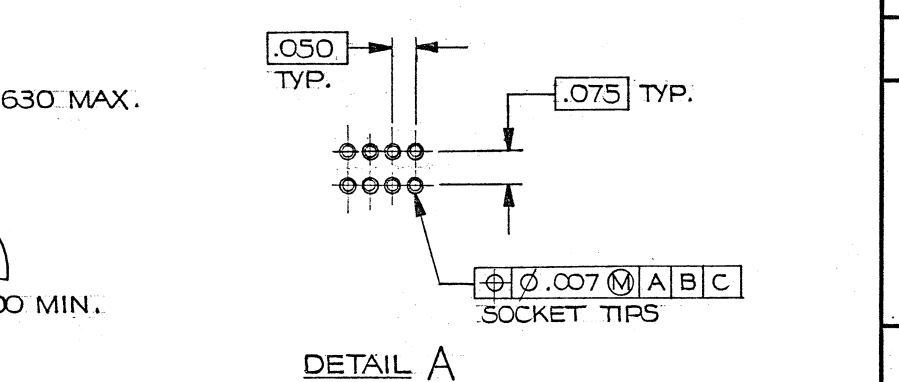
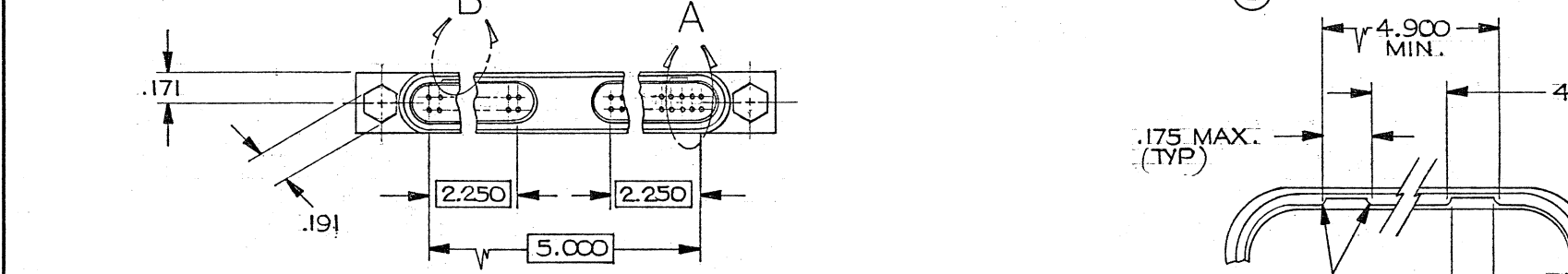
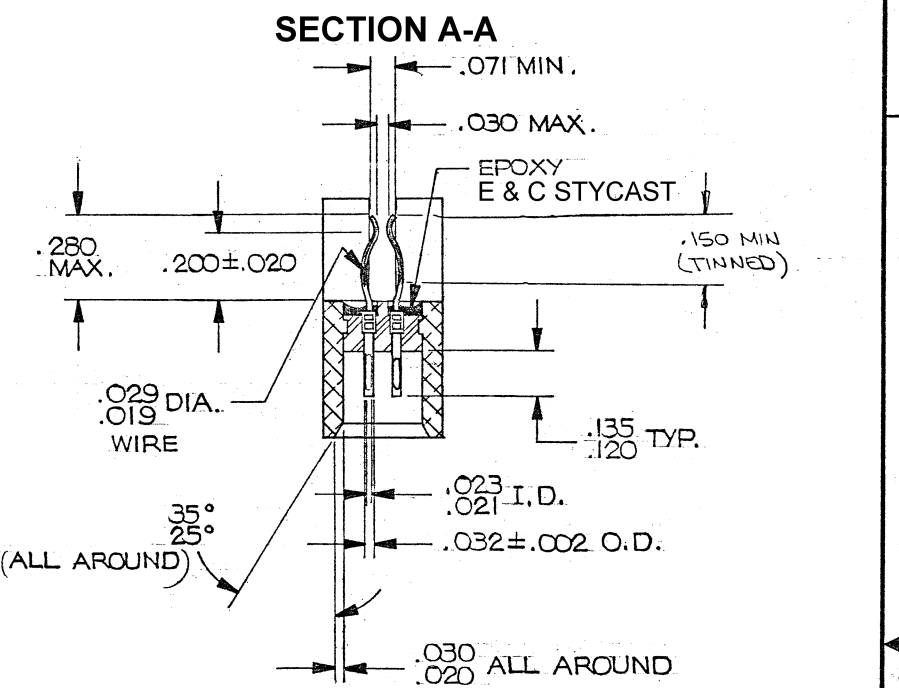
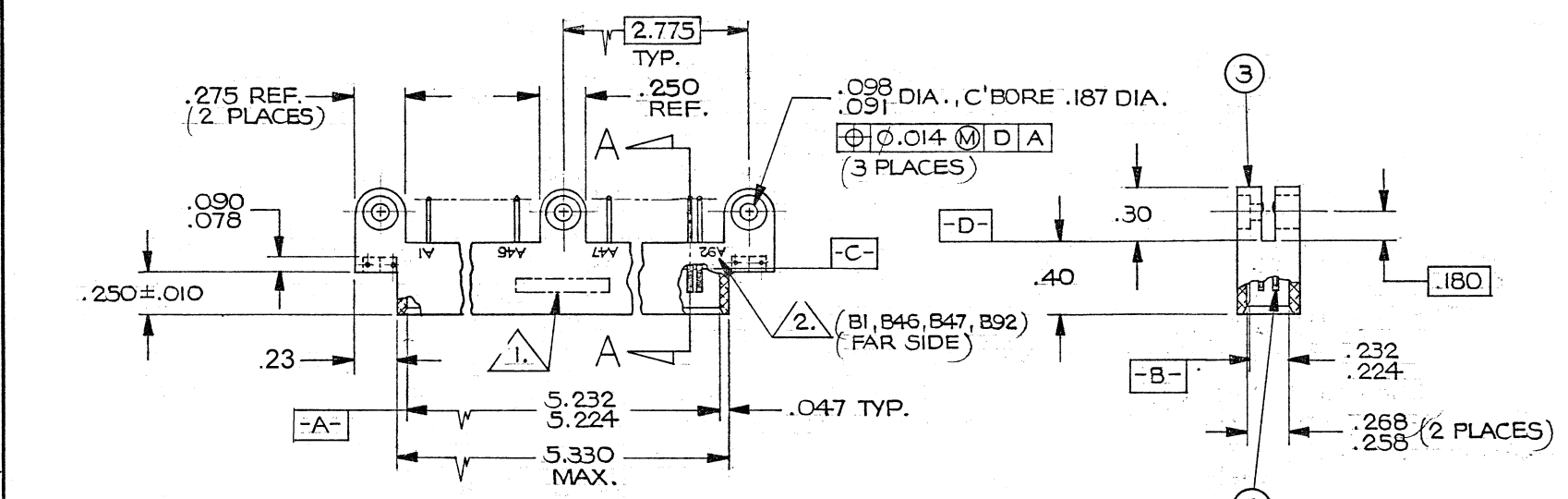
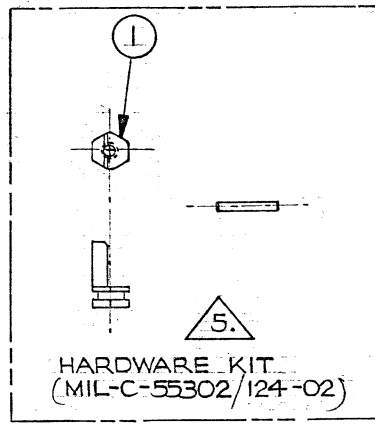
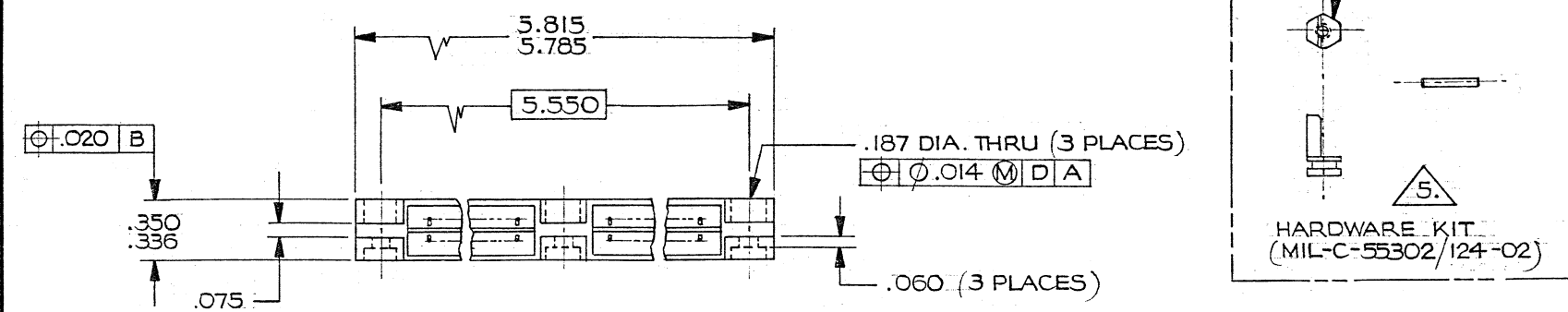


REVISIONS					
ZONE	LTR	ECN	DESCRIPTION	DATE	APPROVED
	C	30917	REVISED AND REDRAWN ORIG. RELEASED BY L.M. (4/28/87)	7/21/87	<i>[Signature]</i>
C-1	D	31461	ADDED TINNING INSTRUCTION	8-2-87	<i>[Signature]</i>
	E	32810	REV. LTR UPDATE	5/15/88	<i>[Signature]</i>
	F	33186	TITLE UPDATED	11/20/90	<i>[Signature]</i>
	G	33312	UPDATE REV LETTER	3/14/91	<i>[Signature]</i>
	H	36894	REV UPDATE		
	J	38614	UPDATE REV. LETTER		
	K	39012	UPDATE REV. LETTER	6-4-99	<i>[Signature]</i>
	L	43997	UPDATE REV. LETTER	12/04/09	TL
C-4	L1	44034	.23 WAS: .29	04/21/10	TL



NOTES: (UNLESS OTHERWISE SPECIFIED)
 1. MARK PER TPD.

2. CAVITY IDENT AS SHOWN. BLACK CHARACTERS IN ACCORDANCE WITH MIL-STD-1285.

3. MATES WITH CONNECTORS SPECIFIED IN MIL-C-55302/122.

4. Q.A. X-RAY REQUIREMENTS:
 REPRESENTATIVE SAMPLE CONNECTORS SHALL BE X-RAYED BY THE WET FILM PROCESS TO PRODUCE 1 TO 1 CONTACT IMAGES. TWO DIFFERENT LATERAL IMAGES SHALL BE TAKEN AT ± 18.5° INCIDENT ANGLES SO AS TO VIEW BOTH ROWS OF CONTACTS SIMULTANEOUSLY IN EACH IMAGE. THE DEVELOPED FILM SHALL BE INSPECTED AT 10 POWER MINIMUM MAGNIFICATION FOR PROPER PIN TERMINAL WIRE INSERTION DEPTH.

5. TWO POLARIZING KEYS & FOUR RETAINING PINS ARE SUPPLIED BUT NOT ASSEMBLED. HARDWARE SHALL BE SEALED IN A CLEAR FOLY BAG, IDENTIFIED "MIL-C-55302/124-02, DATE CODE 4 98278" AND PACKAGED ALONG WITH THE CONNECTOR.

DETAIL B (2 PLACES)

QTY REQD	CODE IDENT	PART OR IDENTIFYING NO.	NOMENCLATURE OR DESCRIPTION
PARTS LIST			
UNLESS OTHERWISE SPECIFIED DIMENSIONS ARE IN INCHES TOLERANCES ARE:		CONTRACT NO.	
FRACTIONS ±	DECIMALS .XX ± .01	APPROVALS	DATE
ANGLES ±	.XXX ± .005	DRAWN L.MATEO	6/30/87
MATERIAL		CHECKED H.SHIMAWA	7-21-87
FINISH		PR. ENG. H.SHIMAWA	7-21-87
NEXT ASSY		APPD.	
USED ON		MALCO A MICRODOT COMPANY, INC. 220 PASADENA AVE., SO. PASADENA, CALIF. 91030	
APPLICATION		CONNECTOR, RECEPT., METAL SHELL MCEMI - 184 SLZ MDC P/N" 095-0088-8004 MIL-C-55302/123	
DO NOT SCALE DRAWING		SIZE C	CODE IDENT NO. 98278
		DRAWING NO.	4-1532018-9
		SCALE	SHEET 1 OF 1