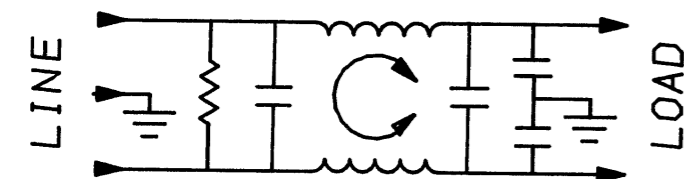
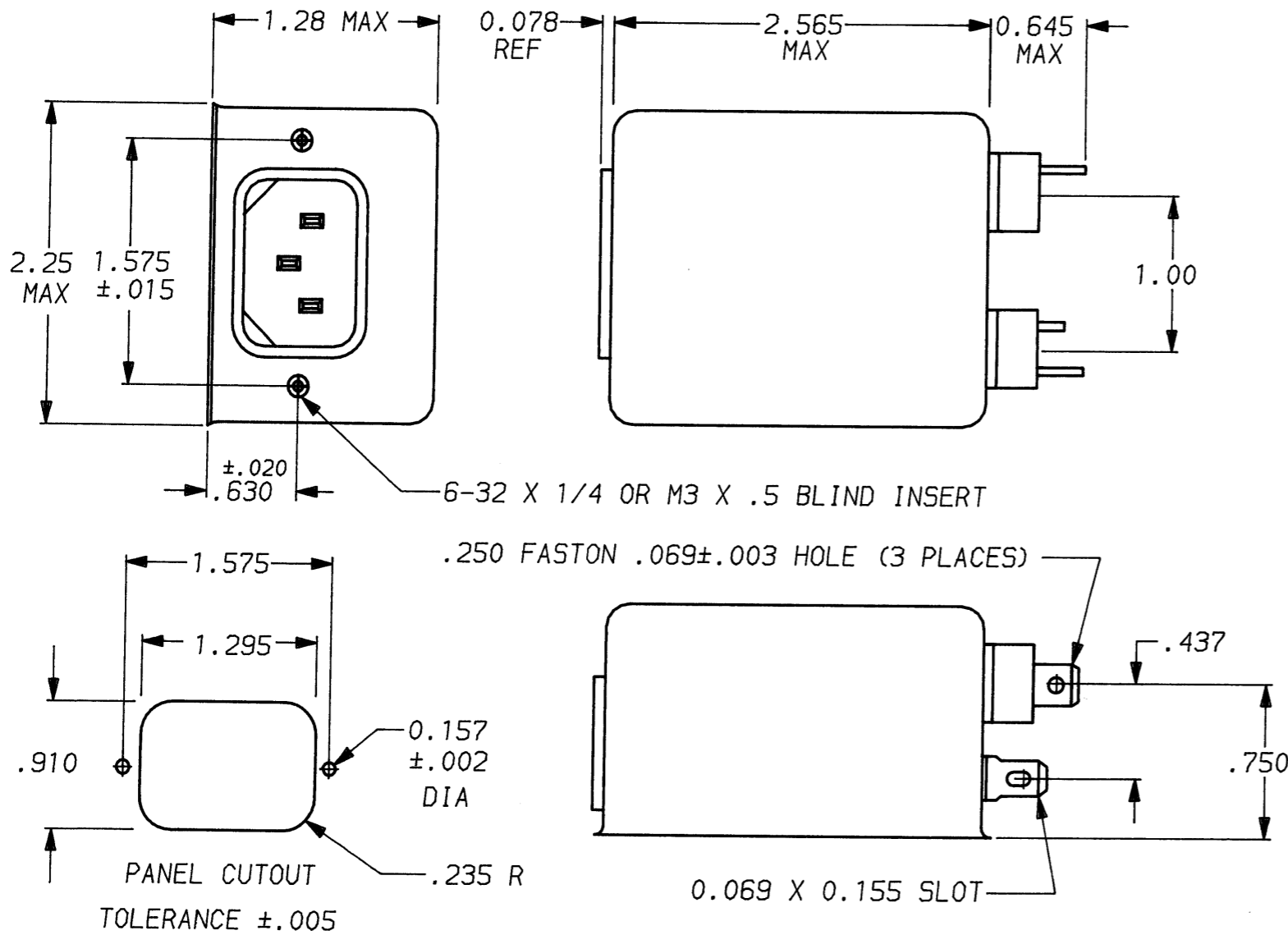


**1 OBSOLETE PARTS: OBSOLETE CIS STREAMLINING  
PER D.RENAUD/D.SINISI**



<del>1609028-8</del>	OBSOLETE	1
<del>6609028-8</del>		
<del>1609028-7</del>	OBSOLETE	1
<del>6609028-7</del>		

50n - 50n (MINIMUM) INSERTION LOSS										
FREQUENCY MHz	.15	.3	.5	1	2	5	10	20	30	
COMMON dB	20	28	35	42	48	53	55	55	55	
DIFF. dB	2	2	35	55	65	65	60	50	50	

This document is proprietary to CORCOM INC. and is not to be reproduced nor used for manufacturing purposes except on CORCOM's order or prior written consent.

TOLERANCE EXCEPT AS NOTED  
 DECIMAL: .XXX .XX .X ANGLES ± 1°  
 ENGLISH: ±.025  
 METRIC: ± —  
 MATERIAL:  
 AS SUPPLIED

FINISH:  
 AS SUPPLIED

DESCRIPTION	APPROVED BY	DATE	REV
	C. Westub	5-21-92	6
ECO-09-026495	AEG	10DEC09	7

**SAFETY ORGANIZATION(S):**

THIS FILTER HAS BEEN FORMALLY RECOGNIZED, CERTIFIED OR APPROVED BY THE LISTED AGENCY. THEREFORE, ALL TEST/REQUIREMENTS SPECIFIED IN THE LATEST REVISION OF THE FOLLOWING AGENCY STANDARDS HAVE BEEN MET:

UL RECOGNIZED  
 CSA CERTIFIED  
 VDE APPROVED  
 OPERATING SPECIFICATIONS:  
 LINE VOLTAGE/CURRENT:  
 LINE FREQUENCY:  
 MAX. CASE RISE @ RATED CURRENT:  
 MAX. LEAKAGE CURRENT, EACH  
 LINE TO GROUND  
 OPERATING AMBIENT TEMP. RANGE:

UL 1283  
 CSA 22.2, NO.0,0.4,8  
 VDE 565-3

3 AMP., 120/250 VAC  
 3 AMP./40°C, 250 VAC  
 50-60Hz  
 40°C  
 .5 mA at 120V 60 Hz  
 1.0 mA at 250V 50 Hz  
 -10°C TO +40°C @ RATED CURRENT, I<sub>r</sub>

IN AN AMBIENT, T<sub>a</sub>, HIGHER THAN 40°C, THE MAXIMUM OPERATING CURRENT, I<sub>o</sub>, IS AS FOLLOWS:

$$I_o = I_r \sqrt{\frac{85 - T_a}{45}}$$

**RELIABILITY SPECIFICATIONS:**

STORAGE TEMPERATURE: -40°C TO +85°C  
 HUMIDITY: 21 DAYS @ 40°C 95% RH  
 CURRENT OVERLOAD TEST: 6 TIMES RATED CURRENT FOR 8 SECONDS

**TEST SPECIFICATIONS:**

INDUCTANCE: 1.76 mH NOMINAL  
 CAPACITANCE: (MEASURED @ 1 KHz, 0.25 VAC MAX., 25°C ±1°C)  
 LINE TO GROUND: .011µF ±20%  
 LINE TO LINE: .203µF ±20%  
 DISCHARGE RESISTOR: 1.5MΩ  
 LINE/GROUND AND LINE/LINE INSULATION RESISTANCE: 6000 MΩ (MIN) AT 100 VDC 20°C AND 50% RH

**RECOMMENDED RECEIVING INSPECTION HIPOT:**

LINES TO GROUND: 2250 VDC FOR 1 MINUTE  
 LINE TO LINE: 1450 VDC FOR 1 MINUTE

**FILTER APPROVAL:**

THE BEST WAY TO SELECT AND QUALIFY A FILTER IS FOR YOUR ENGINEERING TO TEST THE UNIT IN YOUR EQUIPMENT.



**POWER LINE FILTER**

SCALE	DATE	DRG. NO.	REV.
NTS	9-12-89	3VK7 & 3VK7M	7
DRW. BY	ORIGINATOR		
TDL	CW		