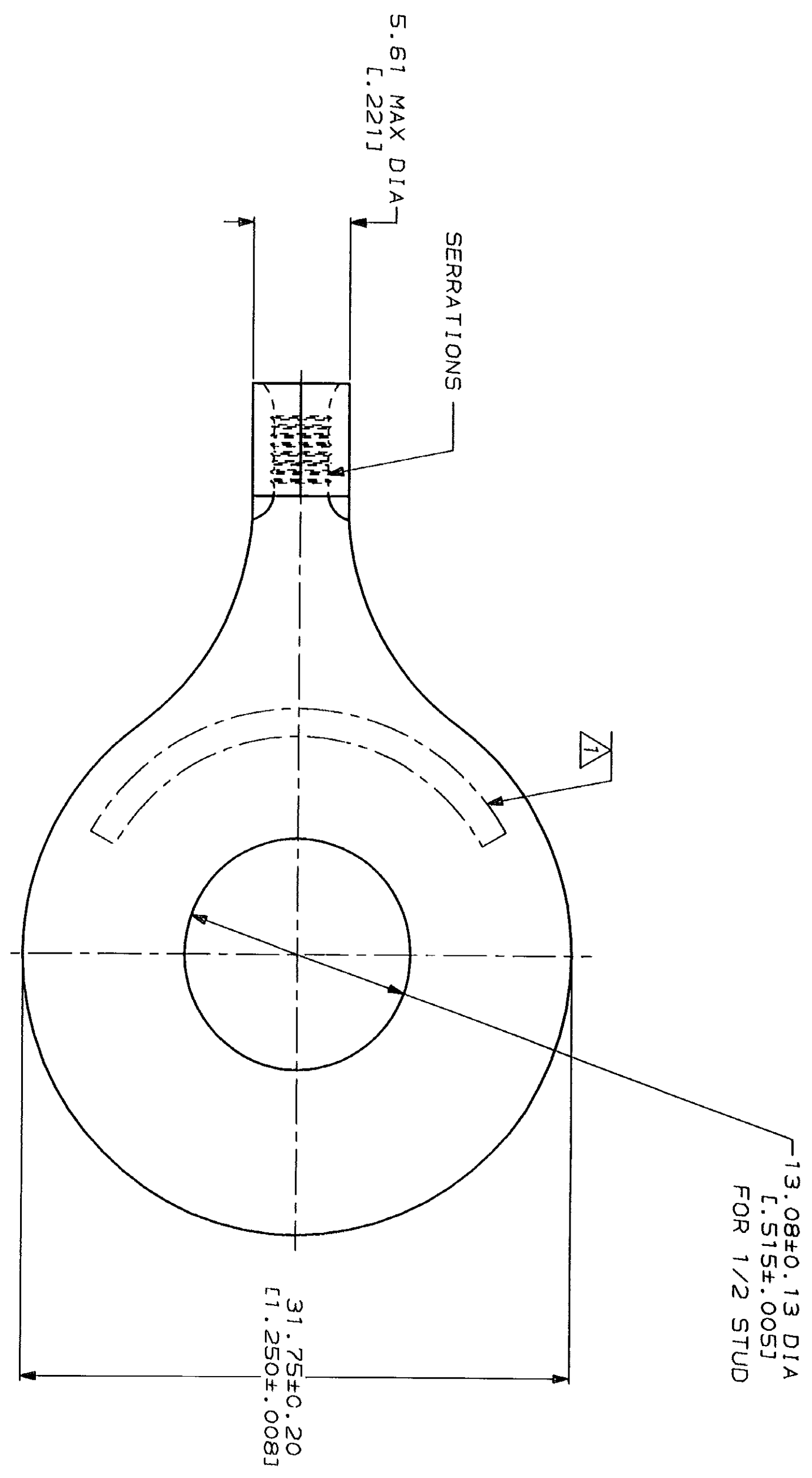


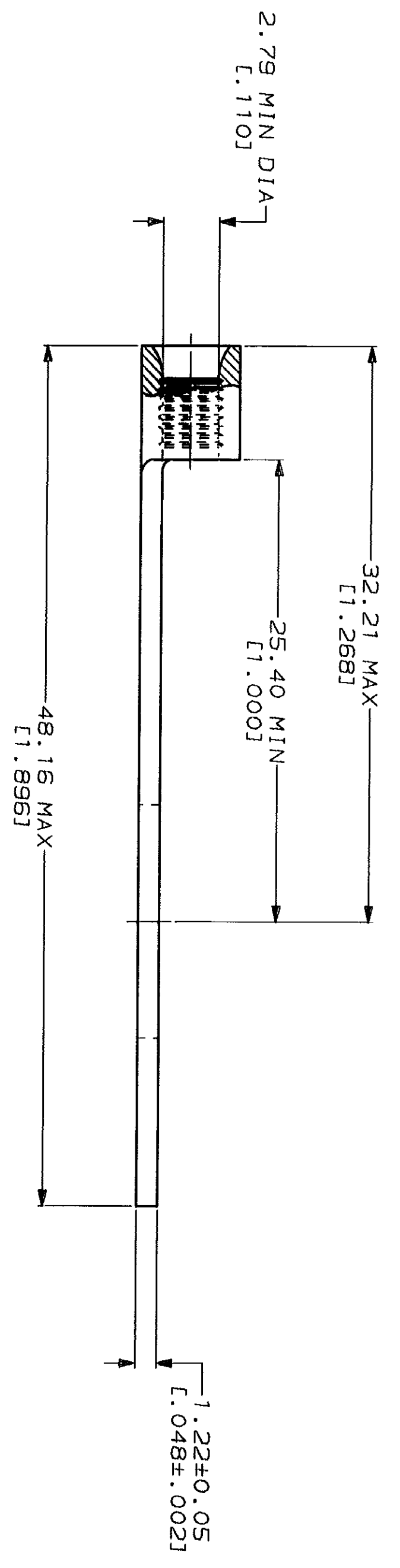
LOC	QTY	REV	DESCRIPTION	DATE	APPD
G	14	P	RELEASED PER 0720-0008-93	2-1-93	JR DAP

METRIOR
DIMENSIONS LISTED IN mm [INCHES]



AMP WIRE RANGE 16-14HD AWG STRANDED	UL E13288 Listed
LR7189 Certified	MILITARY P/N AND CLASS
NOT CERTIFIED	NOT APPLICABLE

1 STAMP AMP 16-14HD* APPROX AS SHOWN



AMP INCORPORATED
CUSTOMER SERVICE SYSTEMS

FOR ADDITIONAL PRODUCT INFORMATION OR COPIES OF DRAWINGS AND TECHNICAL DOCUMENTS
FOR APPLICATION TOOLING INFORMATION
FOR ORDER ENTRY

PRODUCT INFORMATION CENTER
1-800-522-6752
TOOLING ASSISTANCE CENTER
1-800-722-1111

MAX RECOMMENDED OPERATING TEMPERATURE: 170°C MAX

VOLTAGE RATING: NOT APPLICABLE
WIRE CROSS SECTIONAL AREA RANGE: 1.04-2.62mm² [2,050-5,180] CIR MILS STRANDED

FINISH: TIN PLATE
0.00254L [0.00100] MIN THK PER MIL-T-10727

DO NOT SCALE PRINT. UNLESS SPECIFIED DIMENSIONS IN mm [INCHES] TOLERANCES ON: 2 PLC DEC # - 3 PLC DEC # - ANGLES MATERIAL COPPER PER ASTM B-152 ANNEALED

DR 2-1-93 TA BRINKMAN
CHK 2-1-93 DA PATTERSON
APPD 2-1-93 DE MILLER
APPD 2-1-93 JL NECKLEY

APPLICATION SPEC WEIGHT

AMP
AMP Incorporated
Harrisburg, PA 17105-3608

TERMINAL, RING TONGUE,
HEAVY DUTY, BUDGET

SIZE CAGE CODE DRAWING NO
SCALE 4:1 00779 36199

PART NO
36199