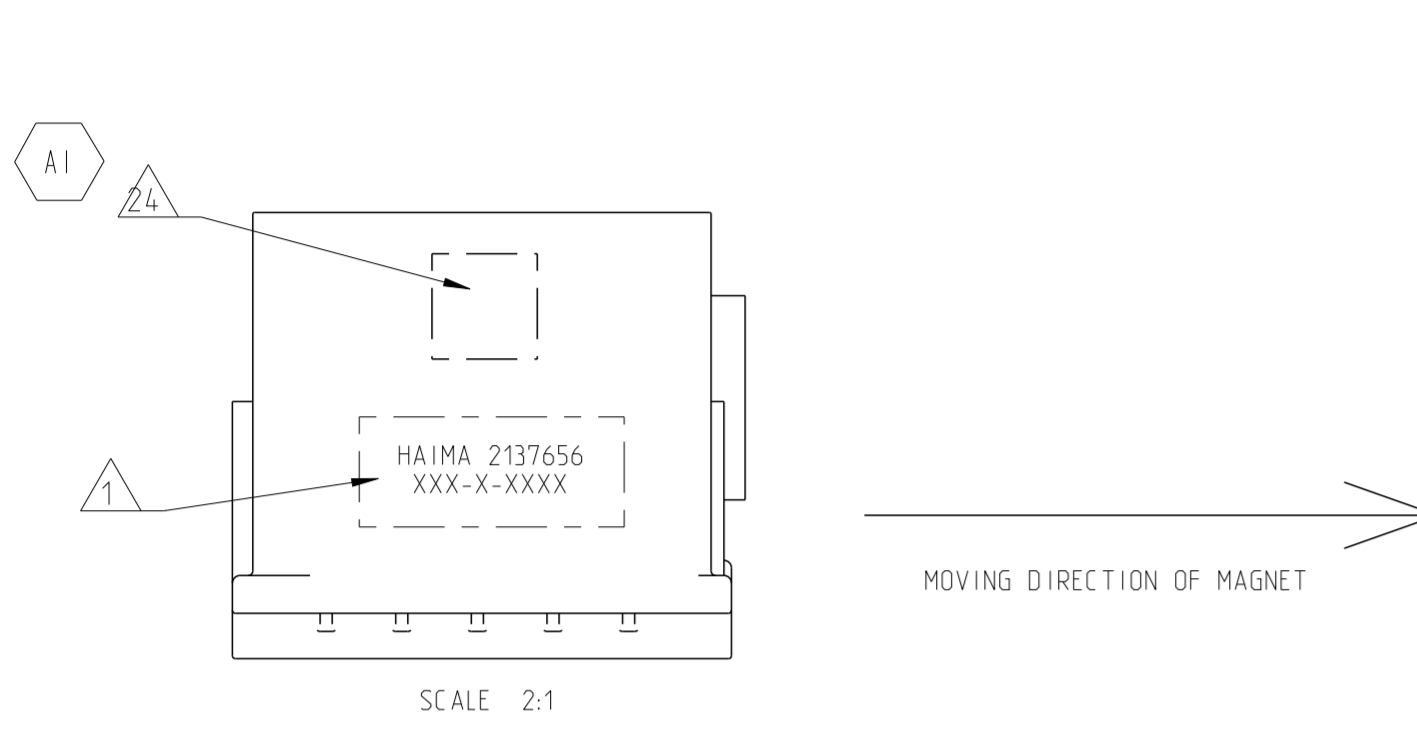
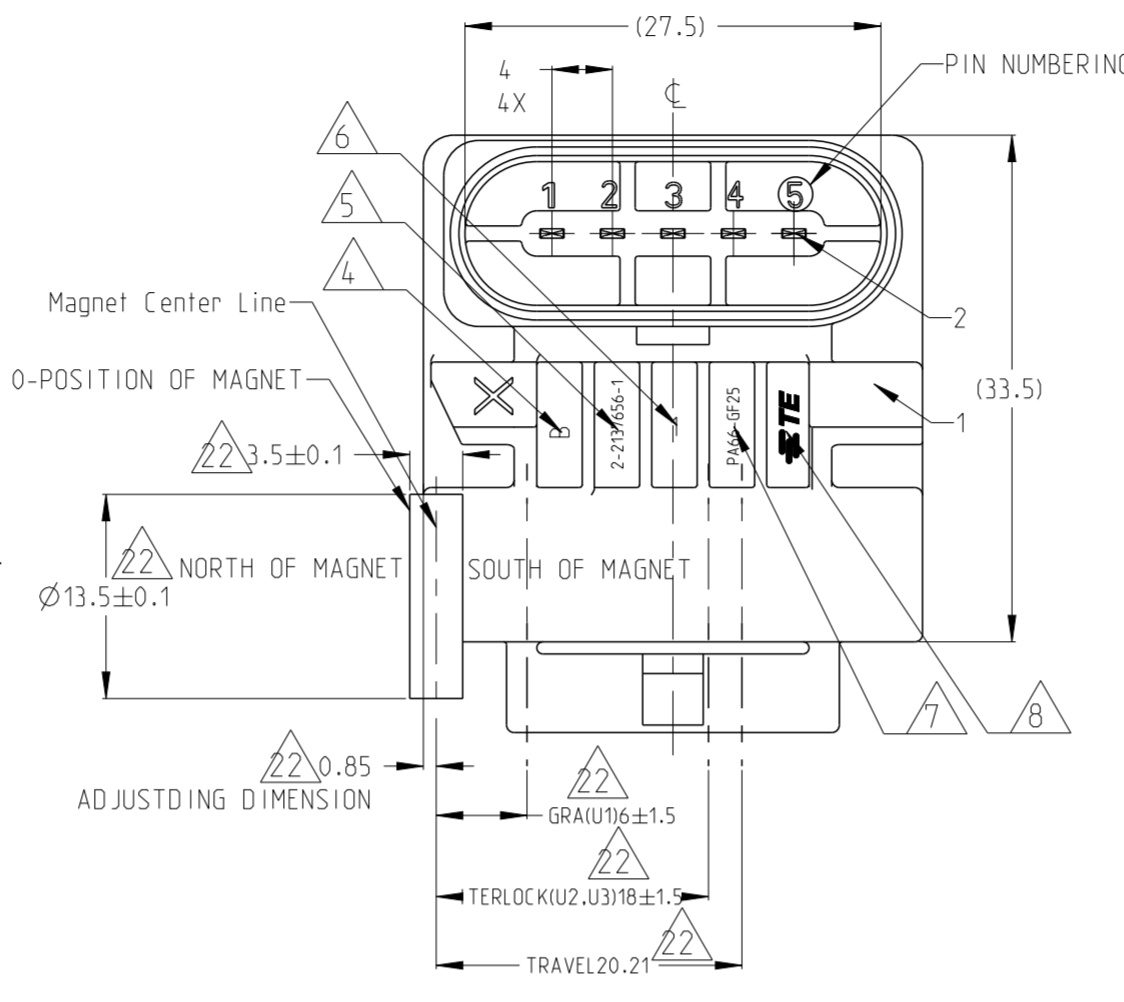


THIS DRAWING IS UNPUBLISHED. RELEASED FOR PUBLICATION 20  
 © COPYRIGHT 20 BY -TE ALL RIGHTS RESERVED.

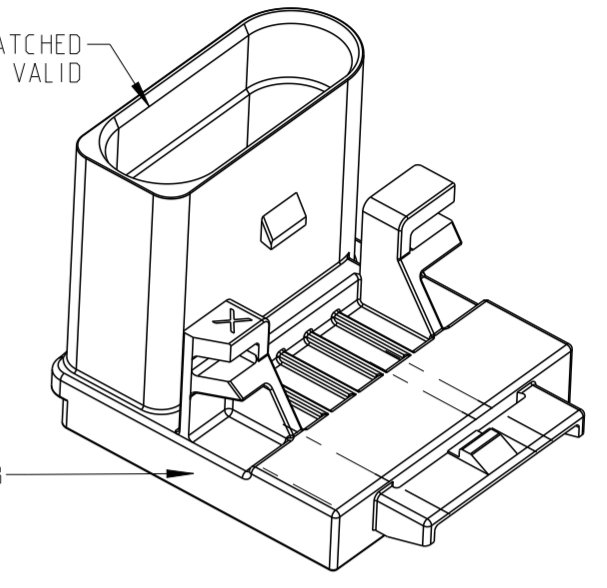
LOC	DIST	REVISIONS					
ES	00	P	LTR	DESCRIPTION	DATE	DWN	APVD
		A		RELEASED	16JAN2013	H.Z	S.H
		A1		ADD 2D CODE REQUIREMENT	16AUG2018	J.C	J.C



MOVING DIRECTION OF MAGNET



PIN POSITION TOLERANCE FOR LATCHED FLAT TERMINALS IS VALID



NOTES

- 1 LABELLING OF THE SENSOR IN THIS AREA POSSIBLE LABELLING OF THE SENSOR AFTER END OF LINE TEST  
 HAIMA 2137656 CUSTOMER CODE  
 XXX Y/M/D  
 X SHIFT  
 XXXX PRODUCT S/N(0-9999)
- 2) FEMALE CONNECTOR P/N: 2137400-1
- 3) GENERAL TOLERANCE ACC. TO ISO 2768-mK
- 4) VERSION NUMBER
- 5) PART NUMBER
- 6) CAVITY NUMBER
- 7) MATERIAL DEFINITION ACCORDING TO VDA260
- 8) TE LOGO ACCORDING TO 1621427
- 9) U3 Relay\_D RATED VOLTAGE DC12V, R<sub>s</sub>100Ω, OPERATING CURRENT 100mA; ON RESISTANCE < 5Ω
- 10) SENSOR APPEARANCE NO DEFECT
- 11) HALL TWO WAY SWITCH SENSOR, NO TWO HIGH OR TWO LOW SIGNAL
- 12) SIGNAL FORM: SQUARE WAVE  
 LOW SIGNAL: 0V--0.8V  
 HIGH SIGNAL: V<sub>sup</sub>-2V--V<sub>sup</sub>V
- 13) IN THE NORMAL POWER SUPPLY VOLTAGE, CLUTCH TOP, CLUTCH BOTTOM VOLTAGE RAISE TIME AND FALL TIME LESS THAN 25μs
- 14) POWER OVERVOLTAGE: POWER VOLTAGE 24V, AFTER LAST 1 MINUTE SIGNAL NORMAL
- 15) POWER REVERSE CONNECTION: POWER POLARITY REVERSE CONNECTION AFTER LAST 1 MINUTE SIGNAL NORMAL
- 16) TEMPERATURE ALTERNATING; VIBRATION; DROP etc. RELIABILITY TEST MEET THE RELEVANT STANDARD OF ISO16750, AFTER TEST OUTPUT SIGNAL NORMAL
- 17) WORKING TEMPERATURE: -40°C-125°C
- 18) PASSED RELIABILITY TEST, MEET EMC REQUIREMENT
- 19) PIN DEFINITION SEE TABLE1
- 20) PRODUCT DETAIL SEE TABLE2
- 21) OUTPUT SIGNAL LOGIC SEE TABLE3
- 22) DIMENSION AND TOLERANCE SHOWN ONLY FOR THE INFORMATION
- 23) THE TEST PLAN PROPOSED ON THIS PRODUCT SPECIFICATION WAS DESIGNED WITH THE INTENT TO VALIDATE 8 YEARS LIFETIME OF THE PRODUCT OR 150,000 KM ON THE SYSTEM.

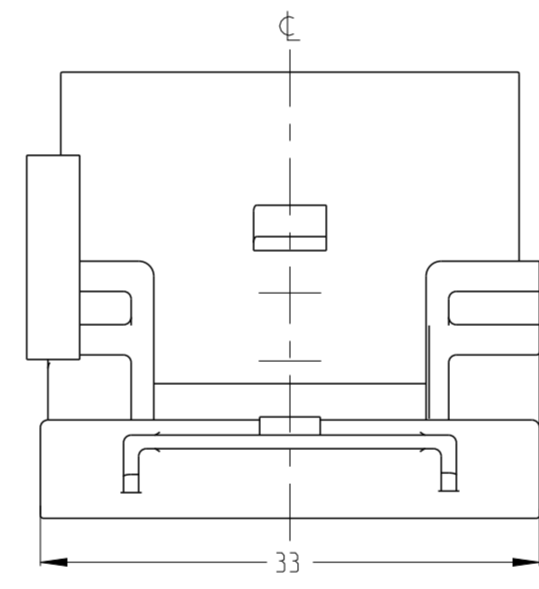
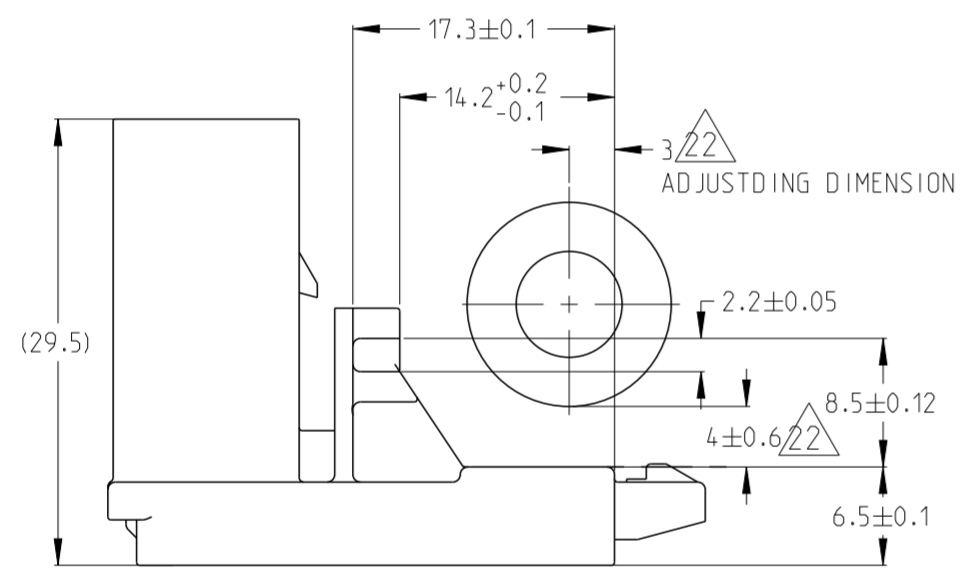


TABLE1:

Pin	Customer	TE define
1	GND	GND
2	GRA(P74)	GRA
3	IL(P110)	IL
4	IL-K(P57)	IL-K
5	Vsup	Vsup

TABLE2:

POS	QTY	MATERIAL	DESCRIPTION
3	N/A	POTTING	PU GLUE
2	5	CuNiSi	PIN
1	1	PA66-GF25	SENSOR HOUSING

TABLE3:

CMC TRAVEL	OUTPUT1(P74)	OUTPUT2(P110orP22)	OUTPUT3(P57)
0mm	H	L	H
6mm	L	L	H
18mm	L	H	L
20.21mm	L	H	L

"PN: 3-2137656-1"

24 TWO DIMENSION CODE (DETAIL INFORMATION REFER TO NOTE1)

THIS DRAWING IS A CONTROLLED DOCUMENT.

DWN	J.CHEN	16AUG2018	TE Connectivity HAIMA-CMC-ASSY MF10-41-490 C006
CHK	H.ZHOU	16AUG2018	
APVD	J.CHANG	16AUG2018	
PRODUCT SPEC			
MATERIAL			RESTRICTED TO
DIMENSIONS: mm	TOLERANCES UNLESS OTHERWISE SPECIFIED:		
	0 PLC ±		
	1 PLC ±0.5		
	2 PLC ±0.13		
	3 PLC ±0.013		
	4 PLC ±0.0001		
	ANGLES ±		
	FINISH		
		108-101209	
		APPLICATION SPEC	
		WEIGHT (11.93g)	
		RESTRICTED CUSTOMER	

SCALE 1:1 SHEET 1 OF 1 REV A1