

REVISIONS

P	LTR	DESCRIPTION	DATE	DWN	APVD
	A	RELEASED	23MAR17	T.Q	W.H

NAME	POS	IN TUBE P/N	QTY'S	CT POST HDR ASS'Y (STD-H DIP)	COLOR
AMP CT CONN POST HDR ASS'Y (STD-H DIP) TUBE PACKING	15	9-292261-5	15	9-292142-5	BLACK
	14	9- -4	15	9- -4	
	13	9- -3	15	9- -3	
	12	9- -2	15	9- -2	
	11	9- -1	20	9- -1	
	10	9- -0	20	9- -0	
	9	8- -9	20	8- -9	
	8	8- -8	25	8- -8	
	7	8- -7	30	8- -7	
	6	8- -6	30	8- -6	
	5	8- -5	40	8- -5	
	4	8- -4	45	8- -4	
	3	8- -3	60	8- -3	
2	8-292261-2	80	8-292142-2		

NOTE: 1. TUBE P/N 0-720997-2

THIS DRAWING IS UNPUBLISHED.

ALL RIGHTS RESERVED.

By -

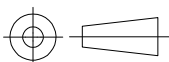


DIMENSIONS:

mm

TOLERANCES UNLESS OTHERWISE SPECIFIED:

- 0 PLC ± -
- 1 PLC ± -
- 2 PLC ± -
- 3 PLC ± -
- 4 PLC ± -
- ANGLES ± -



DWN J.JIANG 23JAN03	MATERIAL -	FINISH -
CHK S.YAO 23JAN03	TE Connectivity	
APVD T.SASAKI 23JAN03		
PRODUCT SPEC 108-60016	NAME TUBE PACKING AMP CT CONN FOR CANON	
APPLICATION SPEC	SIZE A4	CAGE CODE 00779
WEIGHT -	DRAWING NO C-292261	RESTRICTED TO -
CUSTOMER DRAWING		SCALE
		SHEET 1 OF 1
		REV A