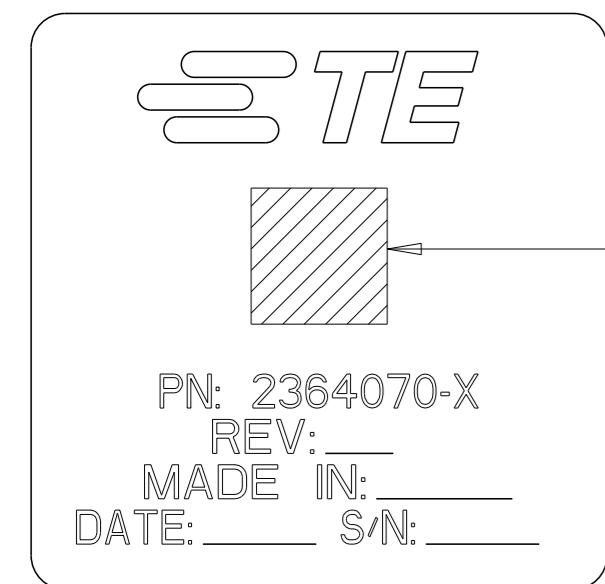
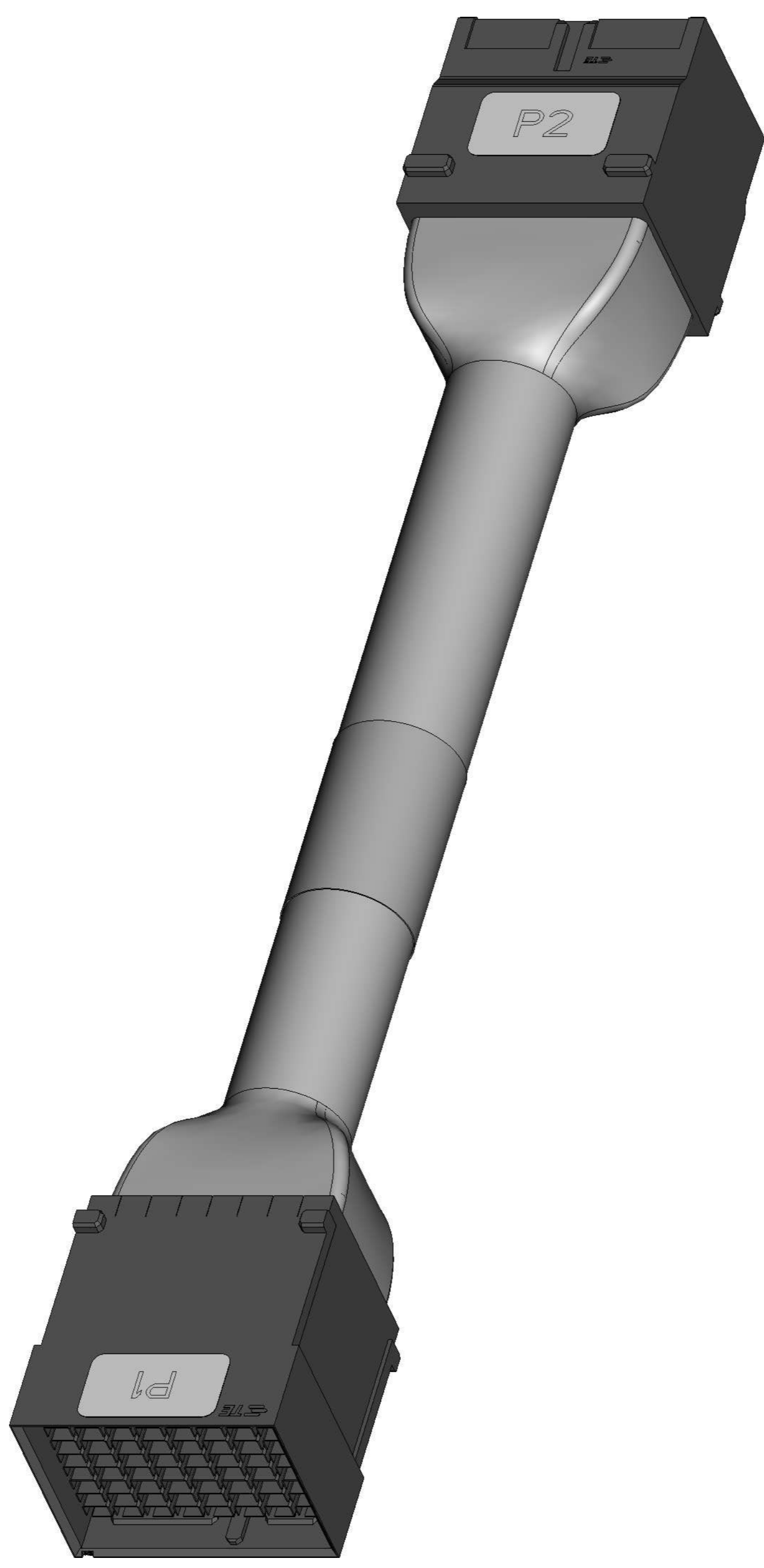


⚠ LABEL INFORMATION: BARCODE FORMAT- 2D DATAMATRIX



BARCODE INFO:
 2364070-ddxxwyyrrssss
 dd=DASH NUMBER
 xx= MANUFACTURING SITE
 (US=USA, CN=CHINA, MX=MEXICO)
 ww= WEEK
 yy= YEAR
 rr= REVISION
 ssss= SERIAL NUMBER 0000 THRU 9999

- EACH CABLE TESTED ON NETWORK ANALYZER, SERIALIZED AND DATA SAVED.
- EACH CABLE ASSEMBLY TESTED FOR CONTINUITY, OPENS, AND SHORTS.



REVISIONS				
#	LY#	DESCRIPTION	DATE	OWN APVD
A		RELEASED	18DEC2019	REH JR
A1		REVISED PER ECO-20-003261	05MAR2020	REH JR

4001.6	±20	9-2364070-9
3751.6	±10	9-2364070-8
3501.6		9-2364070-7
3251.6		9-2364070-6
3001.6		9-2364070-5
2901.6		9-2364070-4
2851.6		9-2364070-3
2801.6		9-2364070-2
2751.6		9-2364070-1
2701.6		9-2364070-0
2651.6		8-2364070-9
2601.6		8-2364070-8
2551.6		8-2364070-7
2501.6		8-2364070-6
2451.6		8-2364070-5
2401.6		8-2364070-4
2351.6		8-2364070-3
2301.6		8-2364070-2
2251.6		8-2364070-1
2201.6		8-2364070-0
2151.6		7-2364070-9
2101.6	±10	7-2364070-8
2051.6	±20	7-2364070-7
2001.6	±15	7-2364070-6
1951.6	±10	7-2364070-5
1901.6		7-2364070-4
1851.6		7-2364070-3
1801.6		7-2364070-2
1751.6		7-2364070-1
1701.6		7-2364070-0
1651.6		6-2364070-9
1601.6		6-2364070-8
1551.6		6-2364070-7
1501.6		6-2364070-6
1451.6		6-2364070-5
1401.6		6-2364070-4
1351.6		6-2364070-3
1301.6		6-2364070-2
1251.6		6-2364070-1
1201.6		6-2364070-0
1151.6		5-2364070-9
1101.6	±10	5-2364070-8
1051.6	±15	5-2364070-7
1001.6	±10	5-2364070-6
976.6	±10	5-2364070-5
951.6		5-2364070-4
926.6		5-2364070-3
901.6		5-2364070-2
876.6	±10	5-2364070-1
DIM	TOL	PART NUMBER
L		

851.6	±10	5-2364070-0
826.6	±10	4-2364070-9
801.6		4-2364070-8
776.6		4-2364070-7
751.6		4-2364070-6
726.6		4-2364070-5
701.6		4-2364070-4
676.6		4-2364070-3
651.6		4-2364070-2
626.6		4-2364070-1
601.6		4-2364070-0
576.6		3-2364070-9
551.6		3-2364070-8
526.6		3-2364070-7
501.6		3-2364070-6
491.6		3-2364070-5
481.6		3-2364070-4
471.6		3-2364070-3
461.6		3-2364070-2
451.6		3-2364070-1
441.6		3-2364070-0
431.6		2-2364070-9
421.6		2-2364070-8
411.6		2-2364070-7
401.6		2-2364070-6
391.6		2-2364070-5
381.6		2-2364070-4
371.6		2-2364070-3
361.6		2-2364070-2
351.6		2-2364070-1
341.6		2-2364070-0
331.6		1-2364070-9
321.6		1-2364070-8
311.6		1-2364070-7
301.6		1-2364070-6
291.6		1-2364070-5
281.6		1-2364070-4
271.6		1-2364070-3
261.6		1-2364070-2
251.6		1-2364070-1
241.6		1-2364070-0
231.6		2364070-9
221.6		2364070-8
211.6		2364070-7
201.6		2364070-6
191.6		2364070-5
181.6		2364070-4
171.6		2364070-3
161.6		2364070-2
151.6	±10	2364070-1
DIM	TOL	PART NUMBER
L		

THIS DRAWING IS A CONTROLLED DOCUMENT. OWN HAMNER 18DEC2019
 CHK J. ROSSMAN 06JAN2020
 APVD J. ROSSMAN 06JAN2020

TE Connectivity

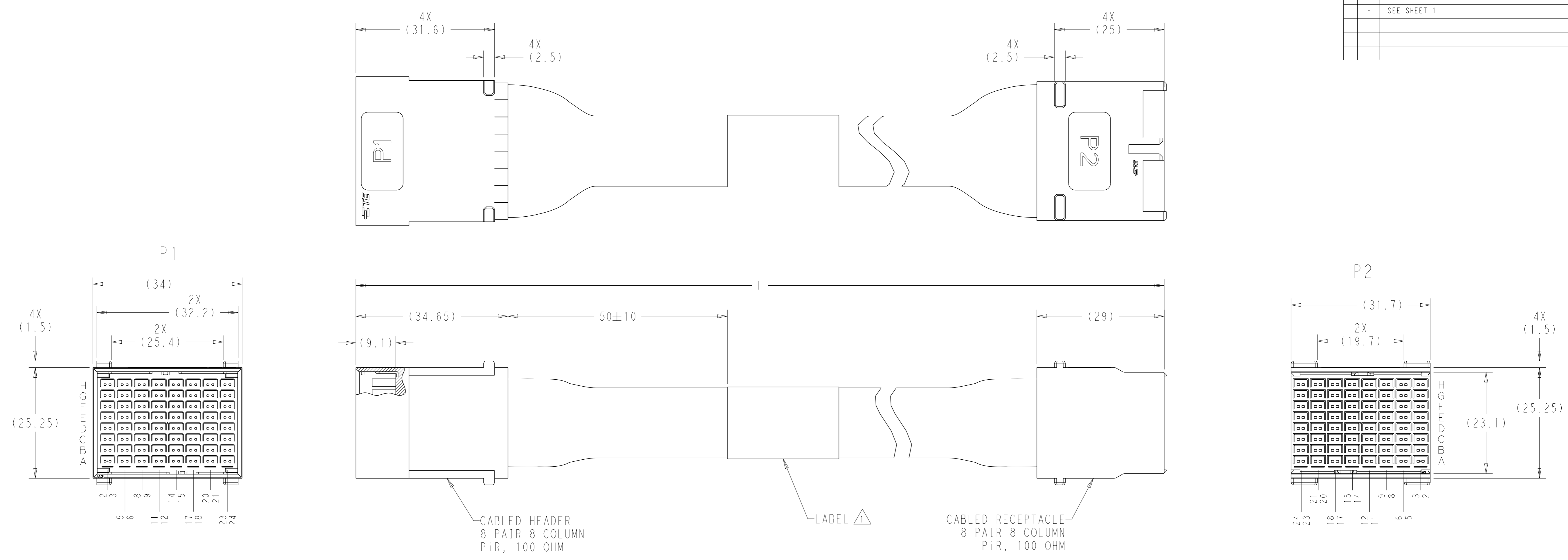
NAME CABLE ASSEMBLY, 100 OHM, PiR, 8 PAIR 8 COLUMN, HDR TO RECEPT, 2-2 WIRING, A-A

SIZE CAGE CODE DRAWING NO RESTRICTED TO
 A1 00779 ©=2364070

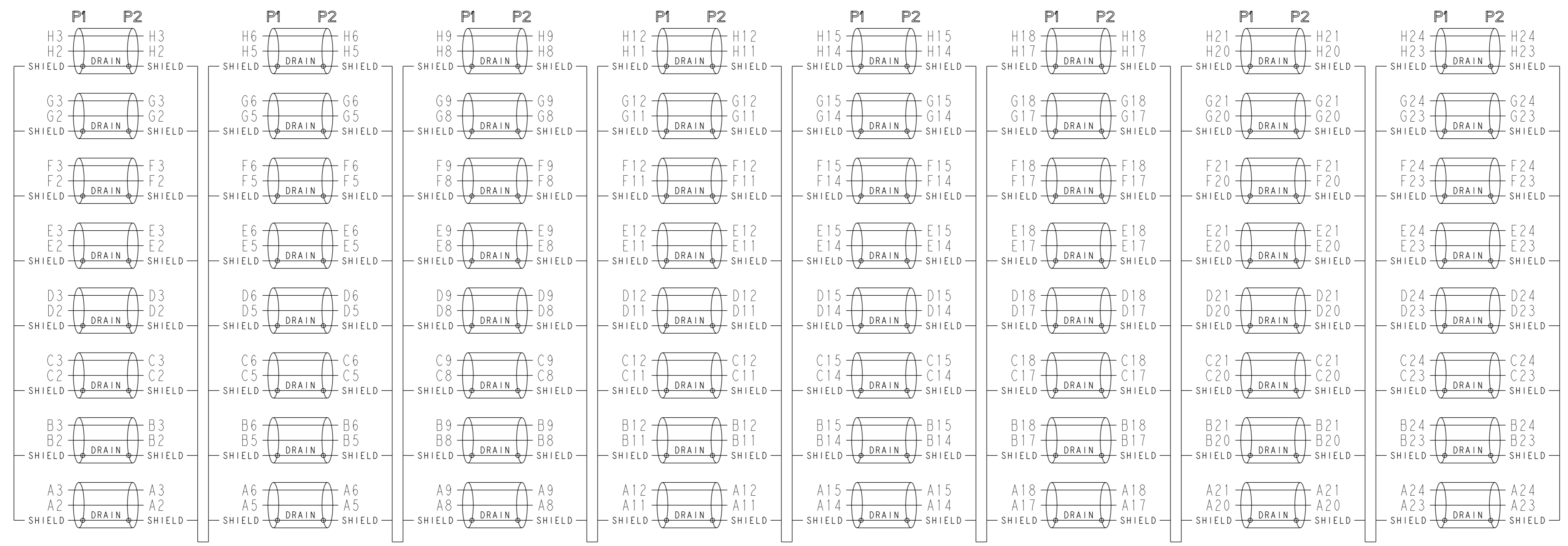
CUSTOMER DRAWING SCALE 2:1 SHEET 1 OF 2 REV A1

THIS PRODUCT HAS NOT COMPLETED VALIDATION AND QUALIFICATION TESTING

REVISIONS				
#	DATE	DESCRIPTION	OWN	APVD
-	-	SEE SHEET 1	-	-



WIRING DIAGRAM



THIS PRODUCT HAS NOT COMPLETED VALIDATION AND QUALIFICATION TESTING

THIS DRAWING IS A CONTROLLED DOCUMENT.		OWN: HAMNER 18DEC2019	
DIMENSIONS: mm		CHK: J. ROSSMAN 06JAN2020	
TOLERANCES UNLESS OTHERWISE SPECIFIED:		APVD: J. ROSSMAN 06JAN2020	NAME: CABLE ASSEMBLY, 100 OHM, PiR, 8 PAIR 8 COLUMN, HDR TO RECEPT, 2-2 WIRING, A-A SIZE: CAGE CODE DRAWING NO: 00779 ©=2364070 RESTRICTED TO:
0 PLC ± 2 PLC ± 3 PLC ± 4 PLC ± ANGLES FINISH ±		PRODUCT SPEC: 108-130001 APPLICATION SPEC: 114-130010 WEIGHT: - CUSTOMER DRAWING	
MATERIAL: -		SCALE: 2:1	SHEET 2 OF 2