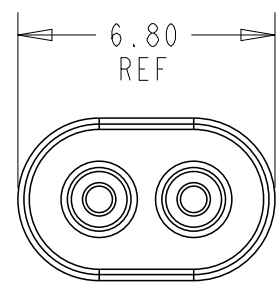
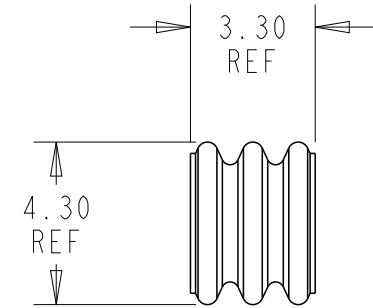


REVISIONS

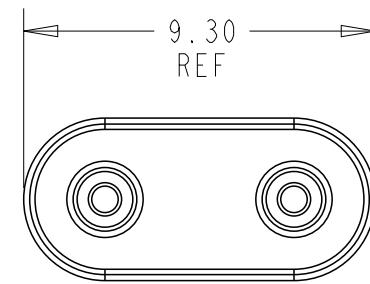
| P | LTR | DESCRIPTION | DATE | DWN | APVD |
|----|-----|---------------------------|-----------|-----|------|
| A | | FIRST RELEASE | 02APR2019 | L.C | D.Z |
| A1 | | REVISED PER ECR-21-117971 | 09NOV2021 | SK | DZ |
| A2 | | REVISED PER ECR-23-164893 | 30JAN2023 | SK | DZ |



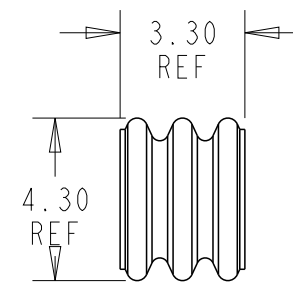
1-2 POSITION



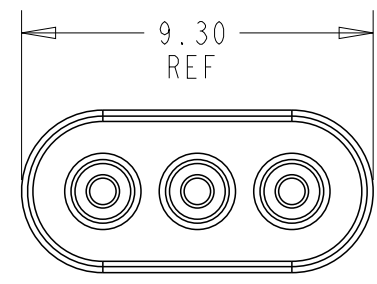
2321922-2



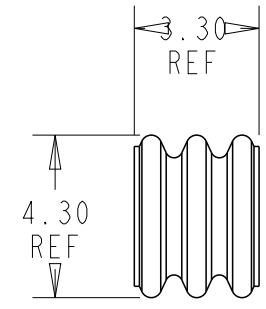
1-2 POSITION



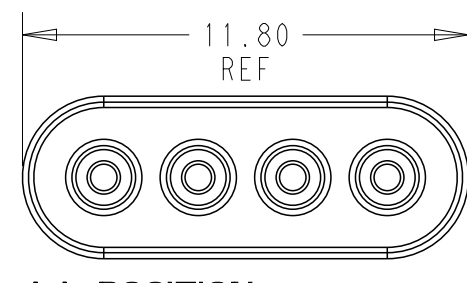
1-2321922-3 CENTER CAVITY BLOCKED



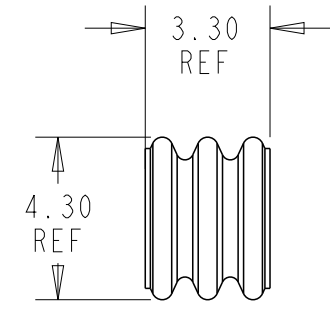
1-3 POSITION



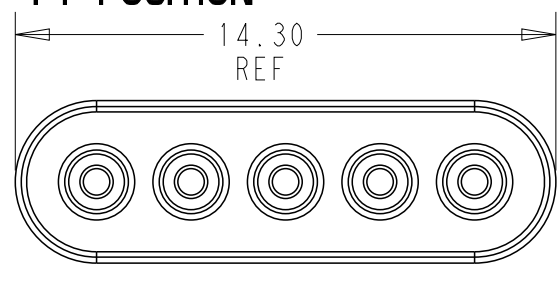
2321922-3



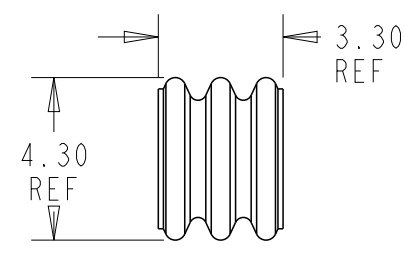
1-4 POSITION



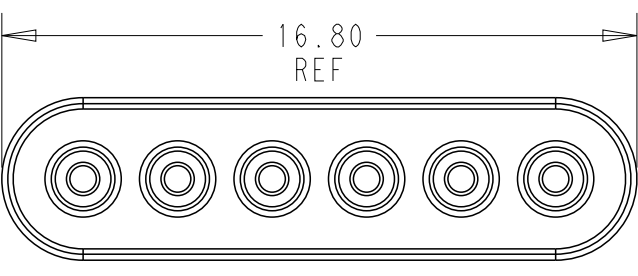
2321922-4



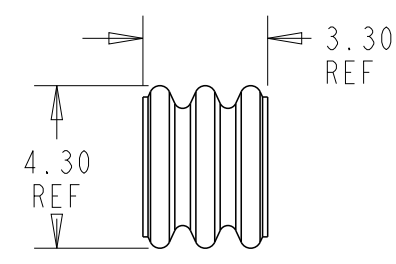
1-5 POSITION



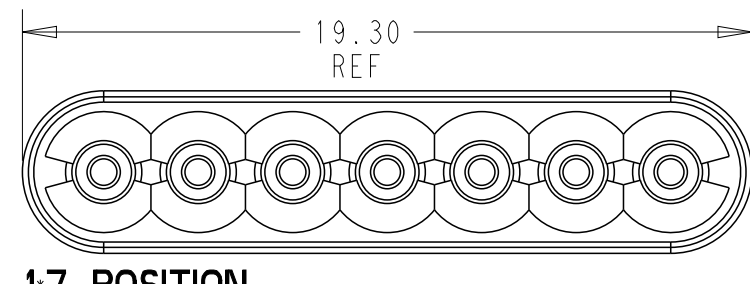
2321922-5



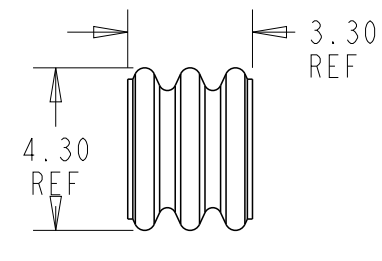
1-6 POSITION



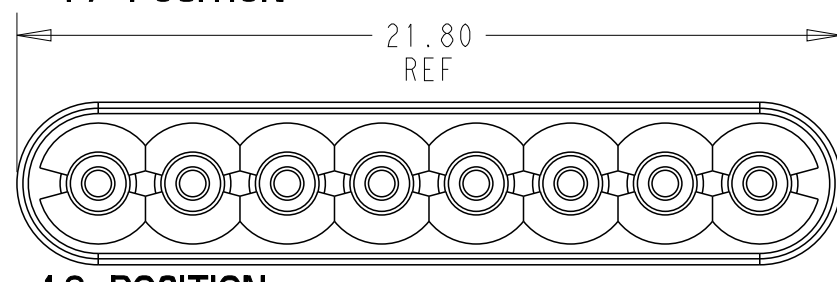
2321922-6



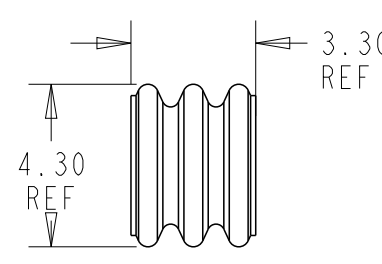
1-7 POSITION



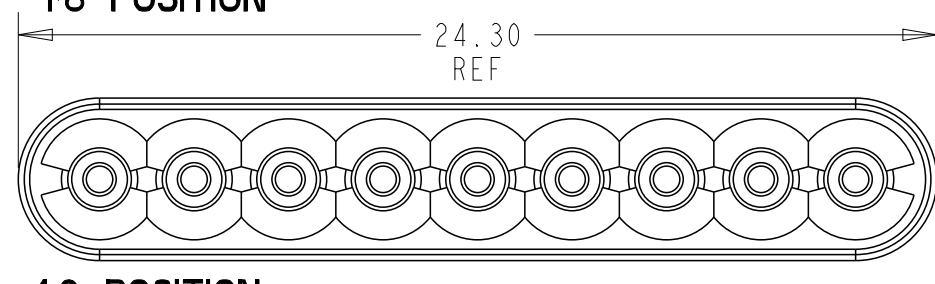
2321922-7



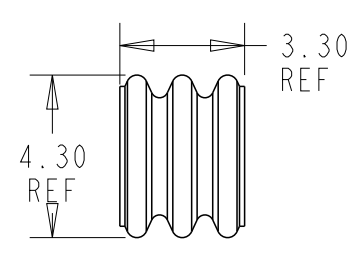
1-8 POSITION



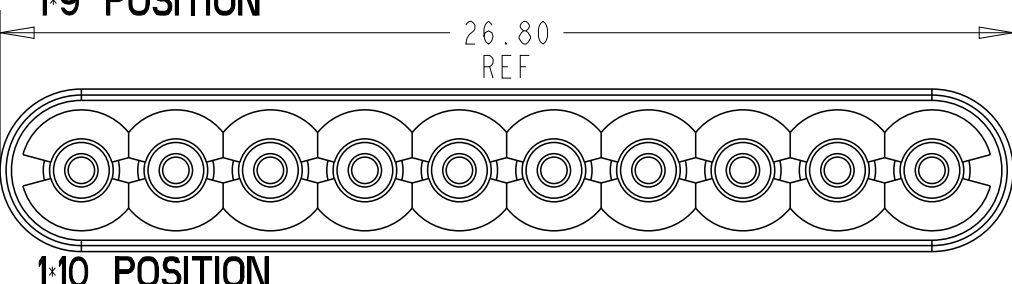
2321922-8



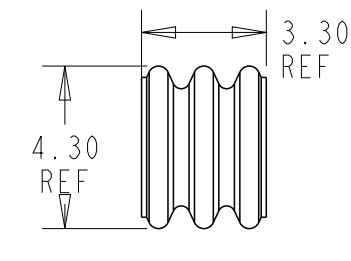
1-9 POSITION



2321922-9



1-10 POSITION



1-2321922-0

- 1. MATERIAL: SILICONE RUBBER, INHERENTLY LUBRICATED
COLOR: BLUE
- 2. FOR USE WITH 26 TO 22 AWG WIRE, INSULATION DIAMETER 1.30-1.60mm
- 3. MATING CONNECTOR P/N'S:
CAP HSG - 2321926-*/2321924-*/*-2366250-*/*-2366251-*/2443725-*/2443727-*/
PLUG HSG - 2321918-*/*-2366249-*/2443729-*
- 4. PRELIMINARY PART - NOT RELEASED FOR PRODUCTION

| | |
|-----------|---------------|
| 1*10 | 4 1-2321922-0 |
| 1*9 | 4 2321922-9 |
| 1*2 | 1-2321922-3 |
| 1*8 | 4 2321922-8 |
| 1*7 | 4 2321922-7 |
| 1*6 | 2321922-6 |
| 1*5 | 2321922-5 |
| 1*4 | 2321922-4 |
| 1*3 | 2321922-3 |
| 1*2 | 2321922-2 |
| POSITIONS | PART NUMBER |

THIS DRAWING IS A CONTROLLED DOCUMENT.

| | | | |
|-------------|--|------------------|------------|
| DIMENSIONS: | TOLERANCES UNLESS OTHERWISE SPECIFIED: | DWN | 01FEB2019 |
| mm | 0 PLC ± | B. WEAVER | 01FEB2019 |
| | 1 PLC ± | CHK | C. YI |
| | 2 PLC ± | APVD | C. YI |
| | 3 PLC ± | PRODUCT SPEC | 108-143069 |
| | 4 PLC ± | APPLICATION SPEC | 114-143067 |
| | ANGLES ± | WEIGHT | - |
| | FINISH - | CUSTOMER DRAWING | SCALE 5:1 |
| MATERIAL | 1 | | |

| | | | |
|--------------|-----------|------------------------------------|---------------|
| | | TE Connectivity | |
| NAME | | REAR GANG SEAL, SDL 2.5 WATERPROOF | |
| SIZE | CAGE CODE | DRAWING NO | RESTRICTED TO |
| A2 | 00779 | G-2321922 | - |
| SHEET 1 OF 1 | | REV A2 | |