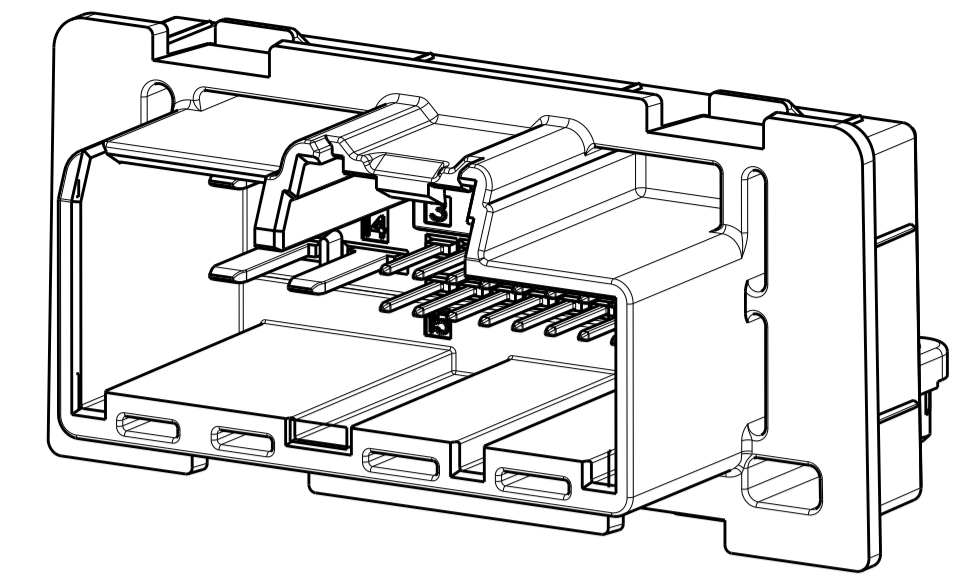


REVISIONS				
P.	LTN.	DESCRIPTION	DATE	APVD.
A2		REVISED PER ECO-15-010795	27JUL2015	DLD CJS
A3		REVISED PER ECO-16-001710	08FEB2016	DLD CJS
A4		REVISED PER ECO-16-016507	30NOV2016	DLD CJS



ISOMETRIC VIEW  
SCALE 2:1

1. MATERIAL:  
HOUSING: PBT 30% GLASS FILLED, COLOR: SEE TABLE  
CONTACTS: COPPER ALLOY

2. PLATING:  
0.64 BLADES: 0.76-2.0µm NICKEL UNDERPLATING ALL OVER  
TIN MATING END: 1.0-2.5µm TIN  
PRESS FIT AREA: 1.5µm TIN MAX

2.8 BLADES: 0.76-2.0µm NICKEL UNDERPLATING ALL OVER  
TIN MATING END: 1.0-2.5µm TIN  
PRESS FIT AREA: 1.5µm TIN MAX

3. 1-2288242-1 SHOWN IN GENERAL VIEWS. SEE SHEET 3,  
KEYING DETAIL VIEWS FOR OTHER PART NUMBERS.

4. MARK JULIAN DATE CODE IN APPROXIMATE LOCATION.

5. TP FUNCTIONALLY GAUGED. GAUGING TAKES  
PRECEDENCE OVER TP DATA.

6. TO BE MEASURED AT [C]

7. SIGNAL PIN PLATED THRU HOLE DIMENSIONS:  
HOLE PRIOR TO PLATING  $\varnothing 1.15 \pm 0.025$ mm  
THICKNESS OF PTH -WALL > 25µm Cu  
FINISHED PLATING: HAL OR GALVANIC TIN 5-15µm OR  
CHEMICAL TIN > 0.5µm  
FINISHED HOLE  $\varnothing 0.94 - 1.09$ mm

8. POWER PIN PLATED THRU HOLE DIMENSIONS:  
HOLE PRIOR TO PLATING  $\varnothing 1.60 \pm 0.025$ mm  
THICKNESS OF PTH -WALL > 25µm Cu  
FINISHED PLATING: HAL OR GALVANIC TIN 5-15µm OR  
CHEMICAL TIN > 0.5µm  
FINISHED HOLE  $\varnothing 1.39 - 1.54$ mm

9. [SC] SYMBOL DENOTES SPECIAL CHARACTERISTICS WHICH ARE SUBJECT  
TO SPECIAL MANUFACTURING CONTROLS, PER AAPI62.

10. MATING CONNECTOR: 2288274 (24P HYBRID)

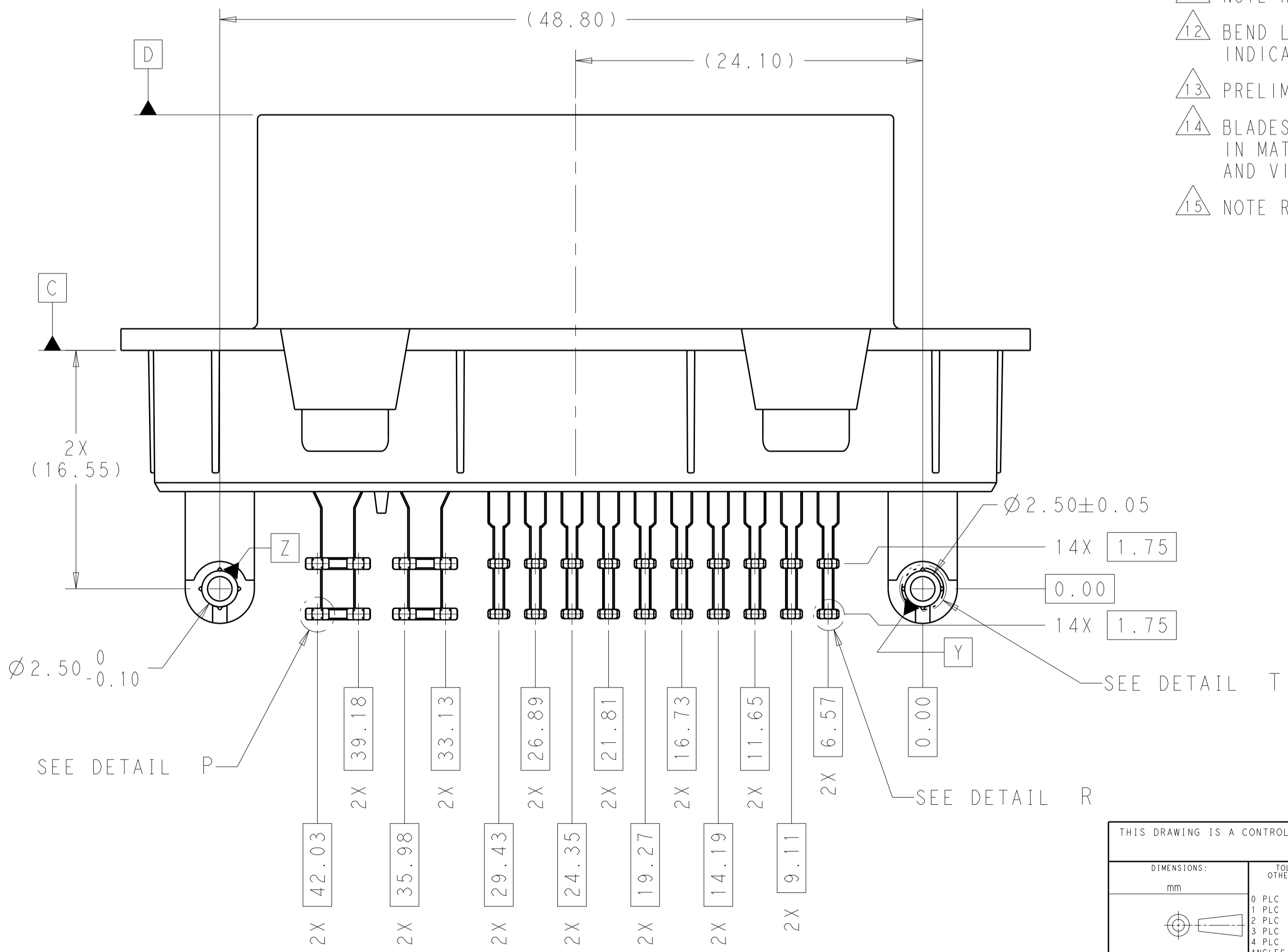
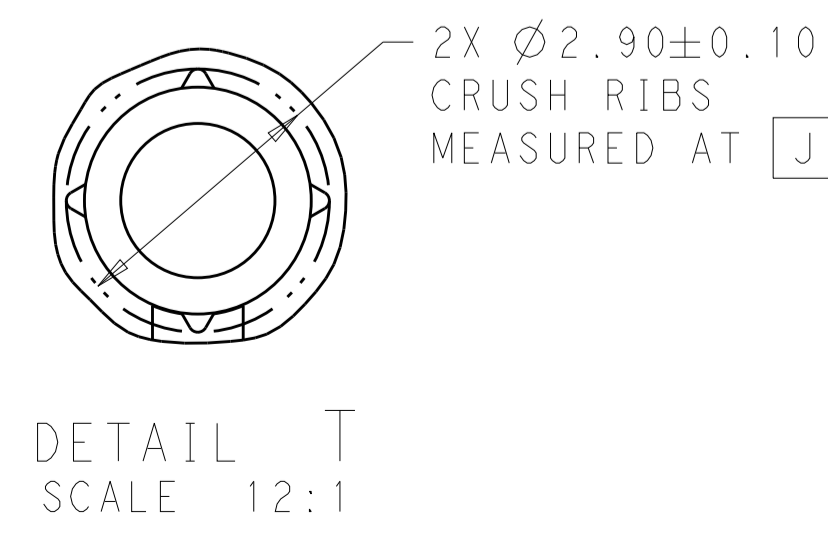
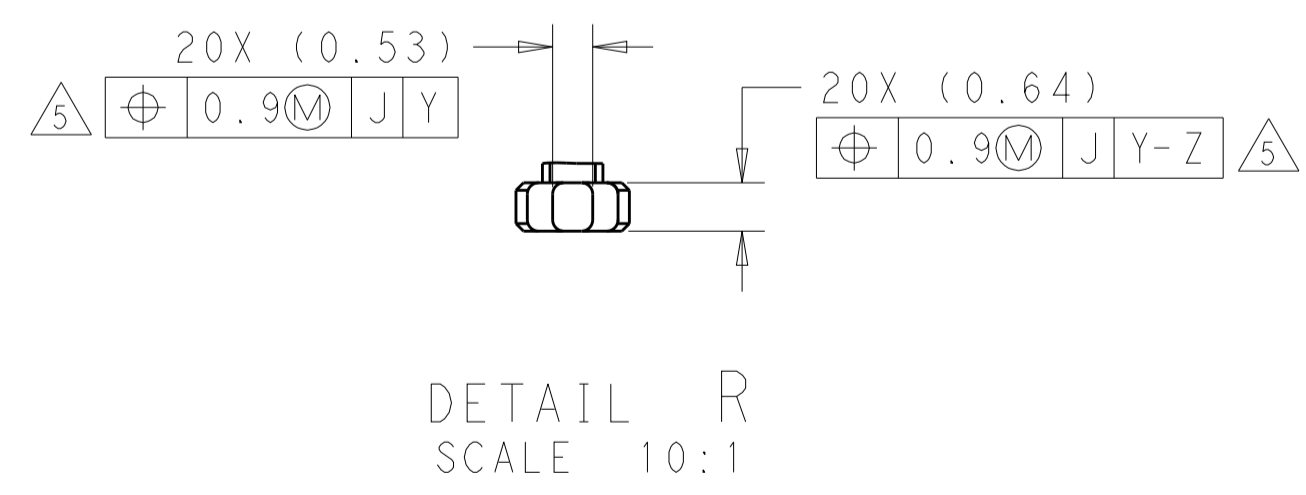
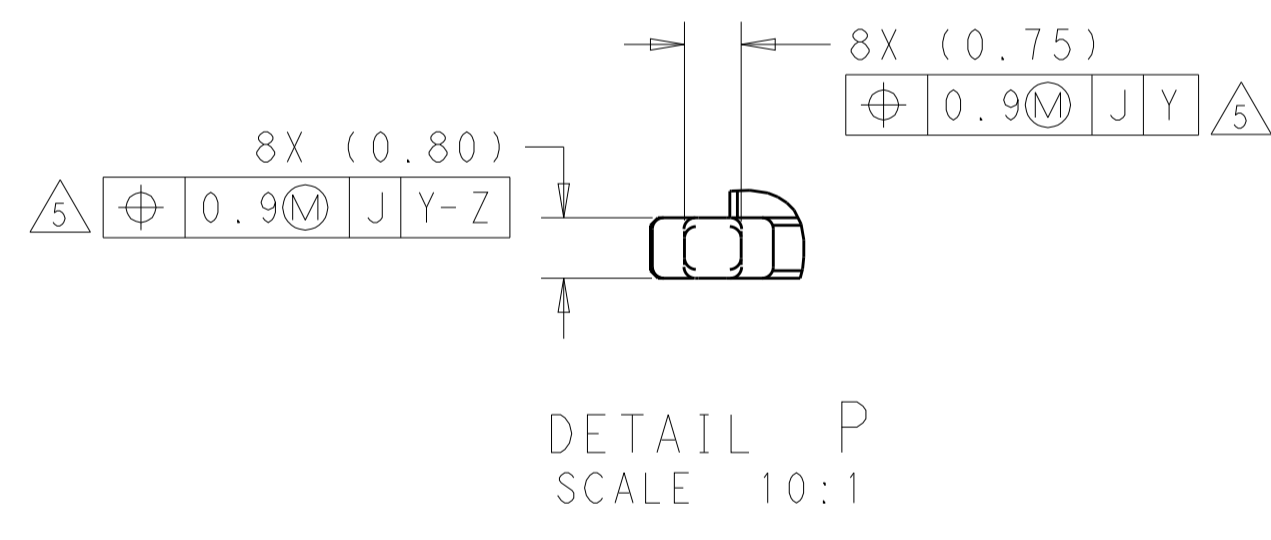
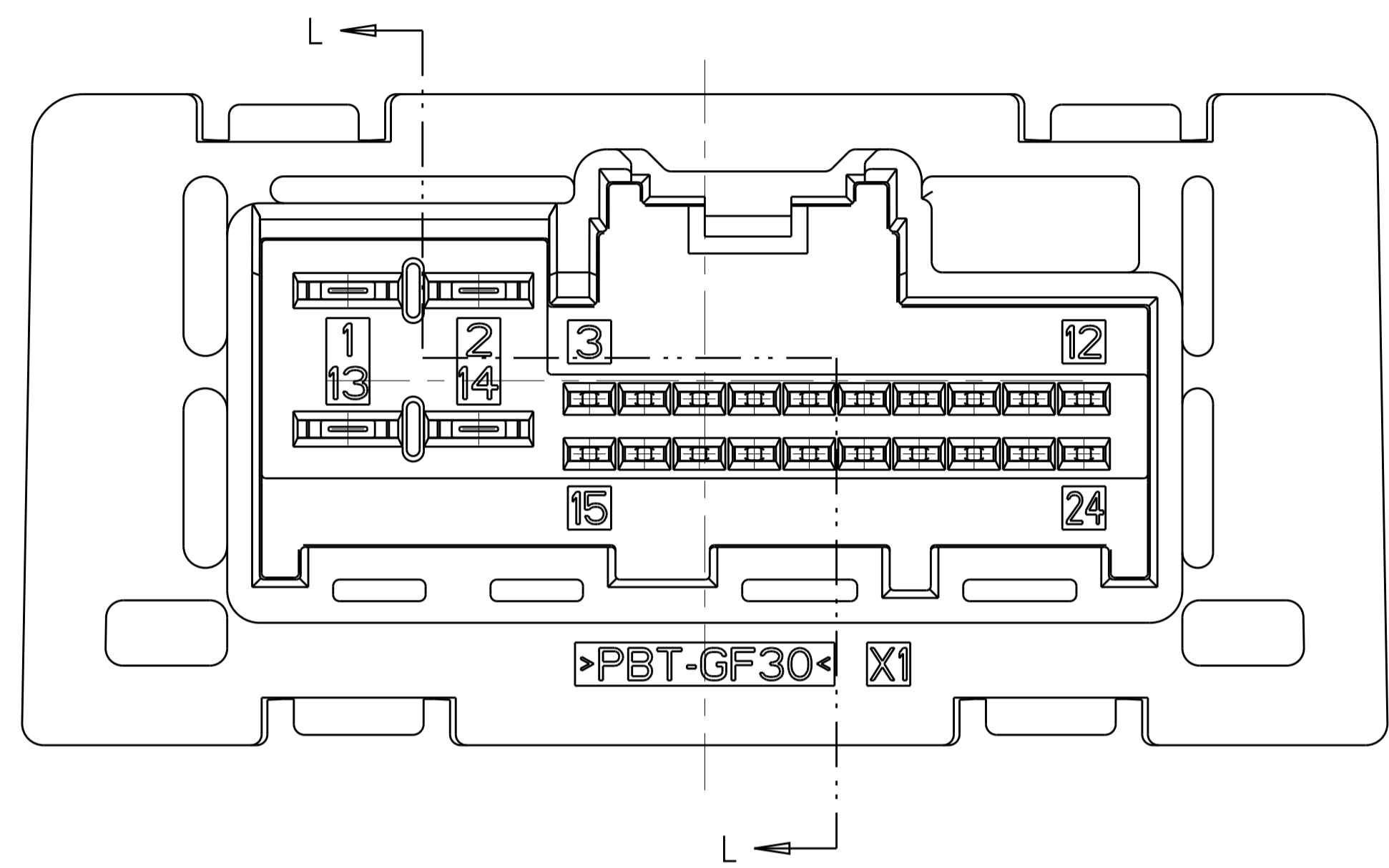
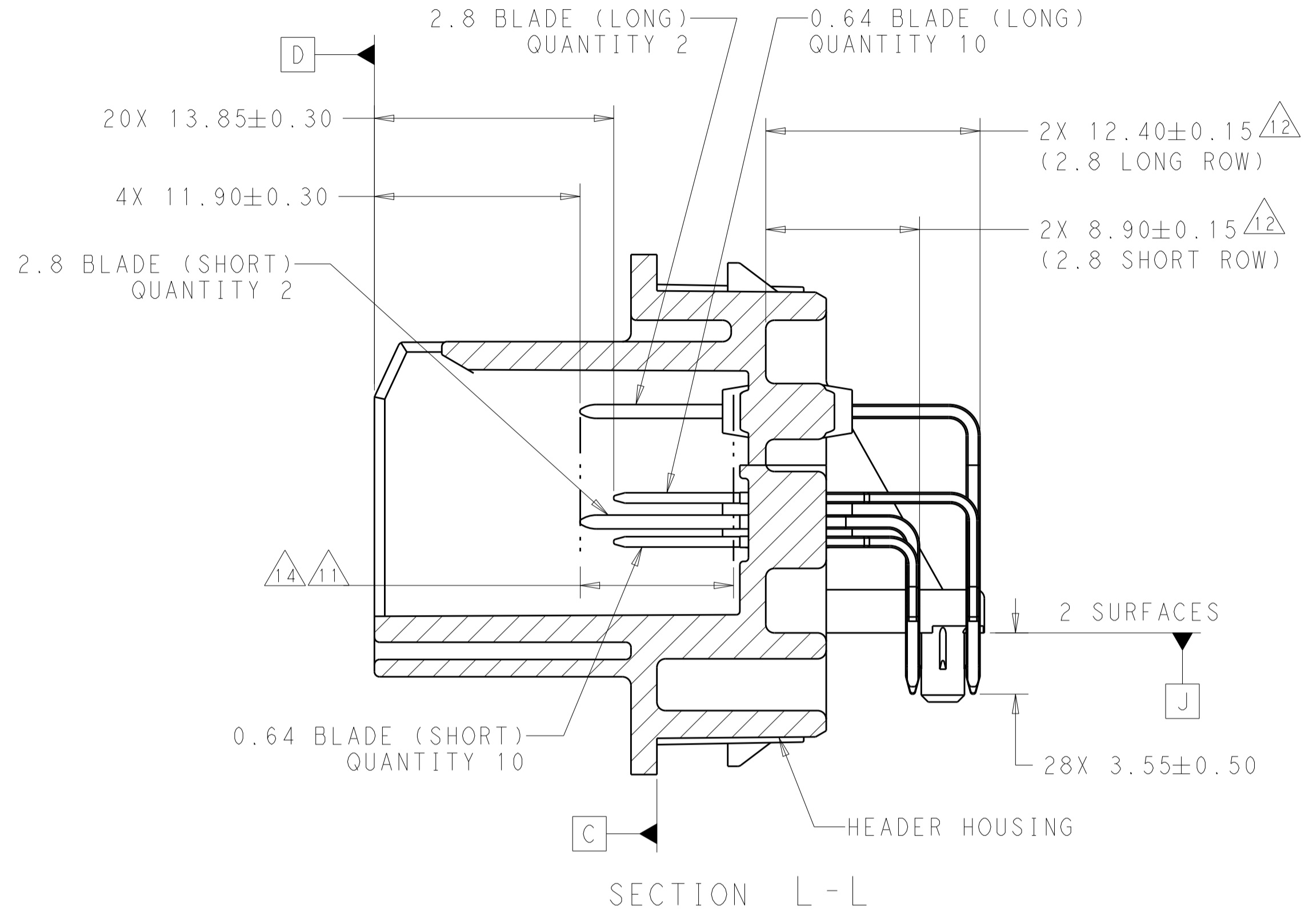
11. NOTE REMOVED

12. BEND LOCATIONS TO BE MEASURED FROM HOUSING AT POINTS  
INDICATED ON SHT 2 TO THE TANGENT POINT OF THE BENDS.

13. PRELIMINARY - NOT RELEASED FOR PRODUCTION

14. BLADES HAVE NYE LUBRICANTS, INC NYEACT 568J-20-UV APPLIED  
IN MATING REGION INDICATED. THIS IS A WHITISH COLORED LUBE  
AND VISIBILITY MAY VARY.

15. NOTE REMOVED

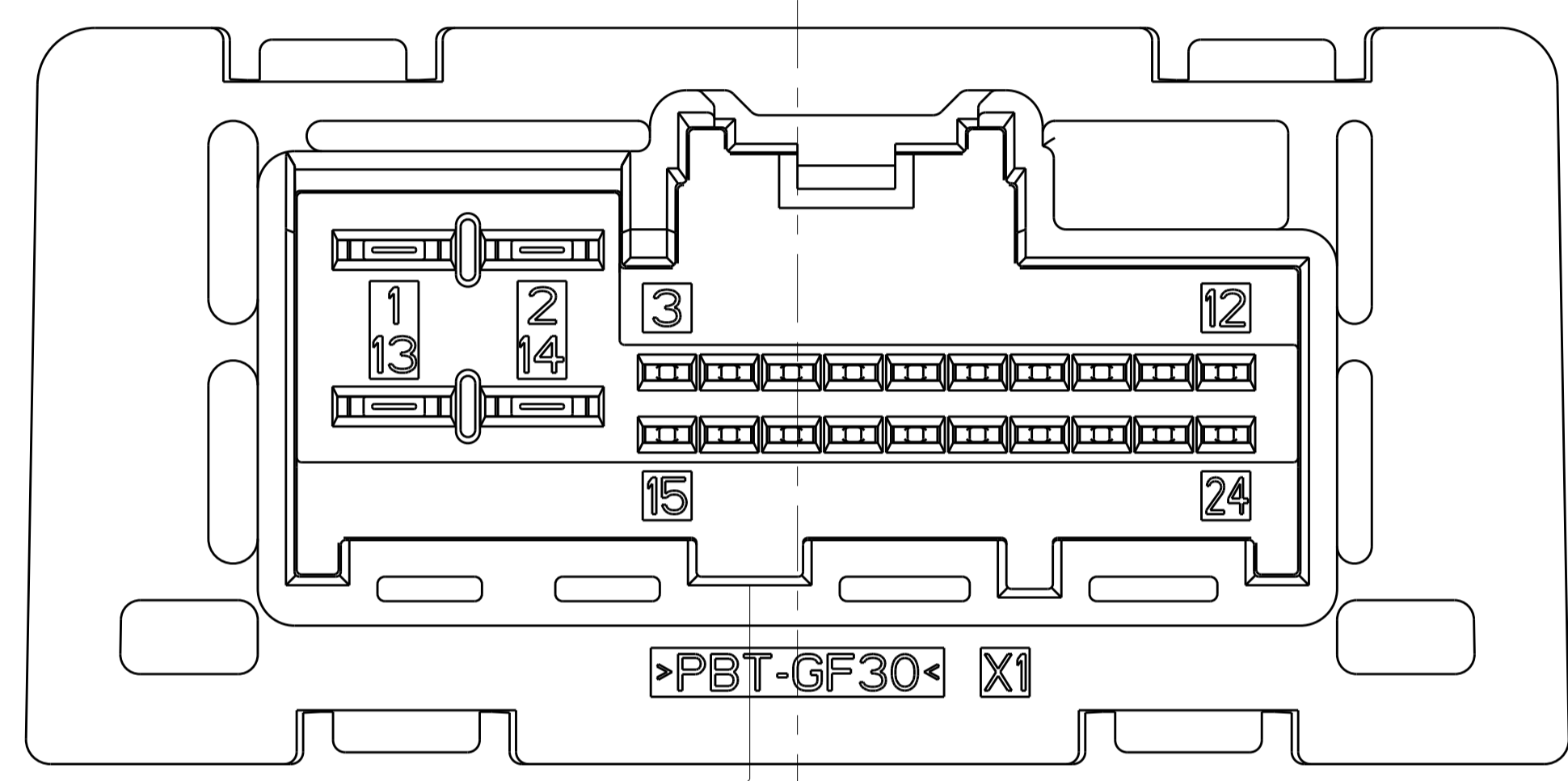


[13]	[14]	GRAY	B	1-2288242-2
[14]	[14]	BLACK	A	1-2288242-1
LUBRICANT		COLOR	KEY	PART NUMBER

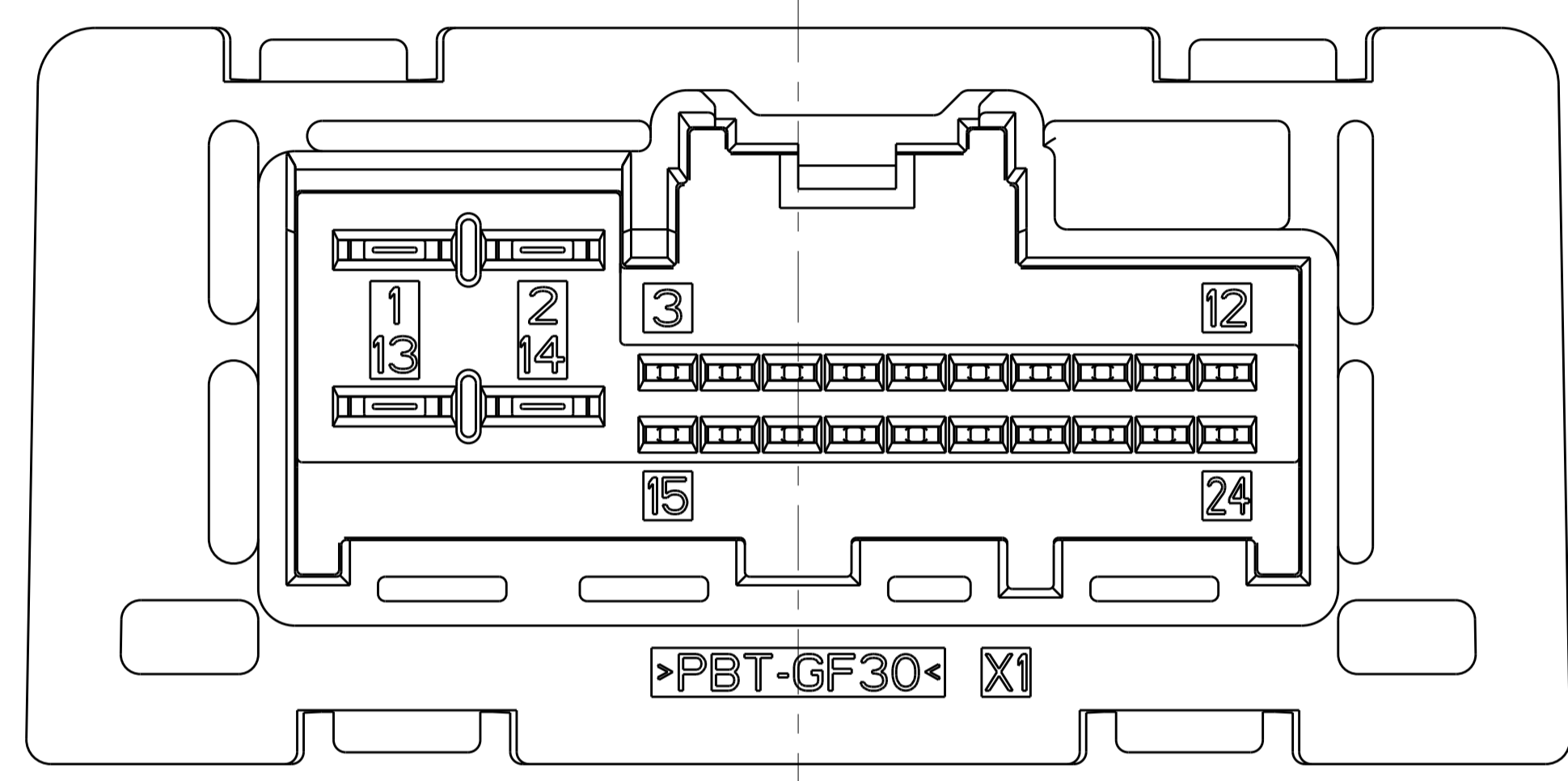
DIMENSIONS:		TOLERANCES UNLESS OTHERWISE SPECIFIED:		DWN D. DRUMMOND 27OCT2014	
mm	0 PLC	±		CHK C. SCHMID 27OCT2014	NAME
	1 PLC	±0.3		APVD C. SCHMID 27OCT2014	PRODUCT SPEC
	2 PLC	±0.13			APPLICATION SPEC
	3 PLC	±			SIZE
	4 PLC	±			CAGE CODE
	ANGLES	±			DRAWING NO
MATERIAL	FINISH	±			RESTRICTED TO
					A100779C=2288242
CUSTOMER DRAWING				SCALE 4:1	SHEET 1 OF 3



REVISIONS				
P.	LTN	DESCRIPTION	DATE	APVD
-	-	SEE SHEET 1	-	-



1-2288242-1  
 KEY A  
 SCALE 4:1



1-2288242-2 <sup>13</sup>  
 KEY B  
 SCALE 4:1

THIS DRAWING IS A CONTROLLED DOCUMENT.		DWN D. DRUMMOND 27OCT2014	TE Connectivity
DIMENSIONS:		CHK C. SCHMID 27OCT2014	
mm	TOLERANCES UNLESS OTHERWISE SPECIFIED:	APVD C. SCHMID 27OCT2014	NAME 24-WAY UNSEALED HYBRID (20X 0.64, 4X 2.8) MULTI-SPRING RIGHT ANGLE, HEADER ASSEMBLY
0 PLC ± 1 PLC ±0.3 2 PLC ±0.13 3 PLC ± 4 PLC ± ANGLES ±°	FINISH ±μm	PRODUCT SPEC	SIZE A1
MATERIAL		APPLICATION SPEC	CAGE CODE 114-13312
		WEIGHT	DRAWING NO 2288242
		CUSTOMER DRAWING	RESTRICTED TO
		SCALE 4:1	SHEET 3 OF 3
			REV A4