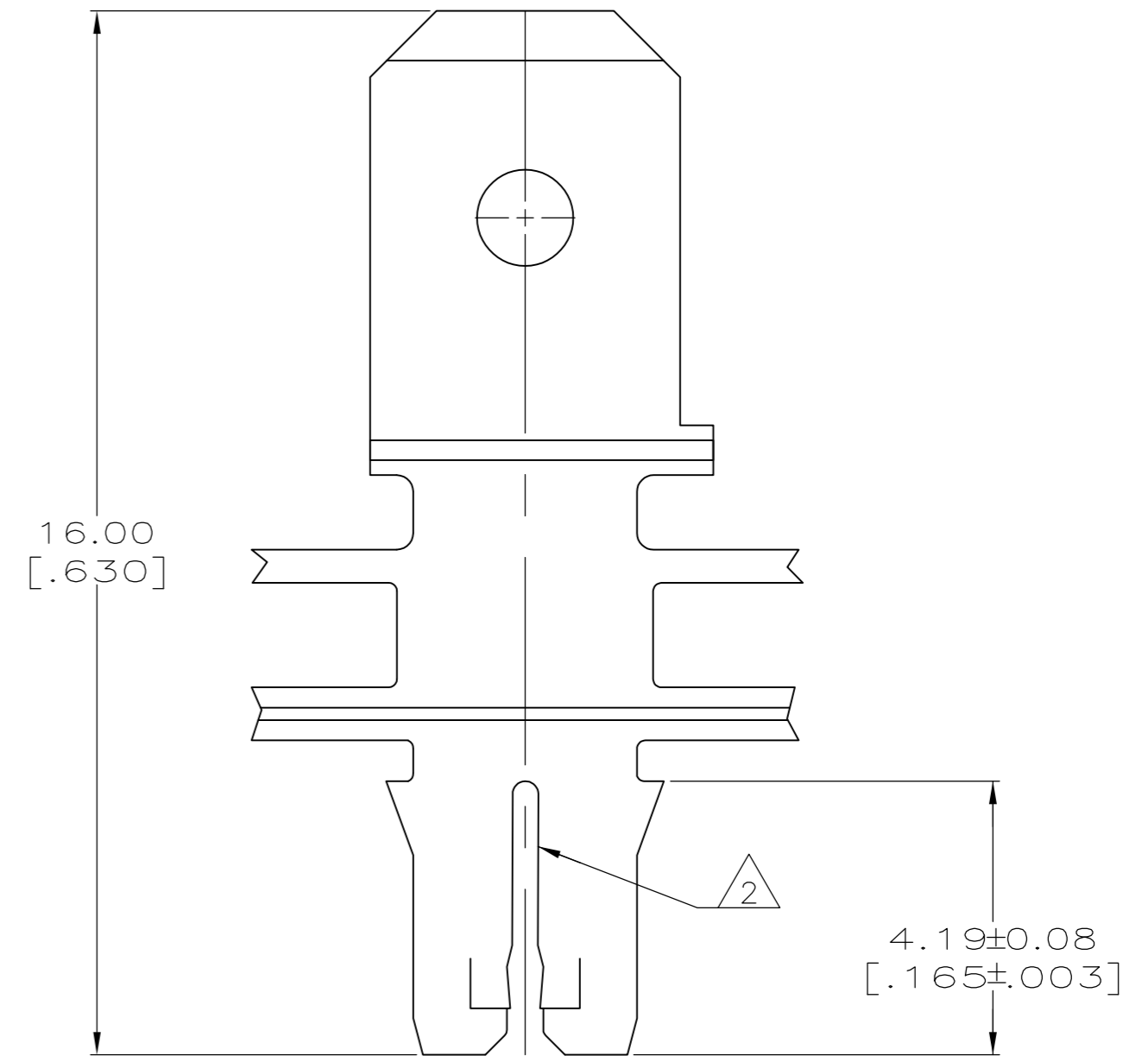
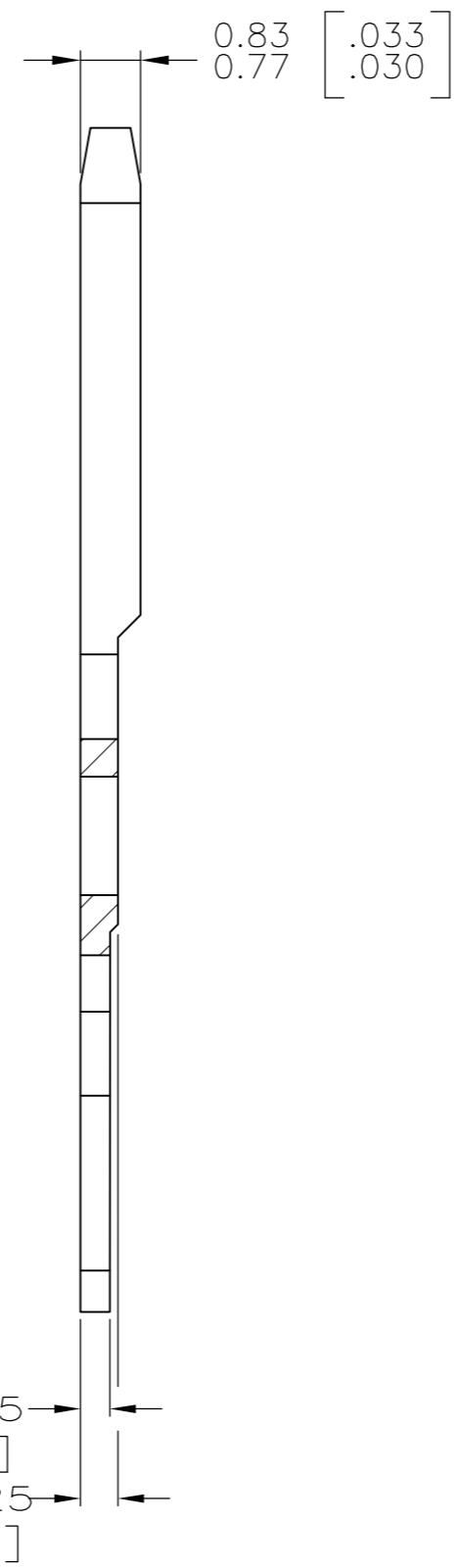
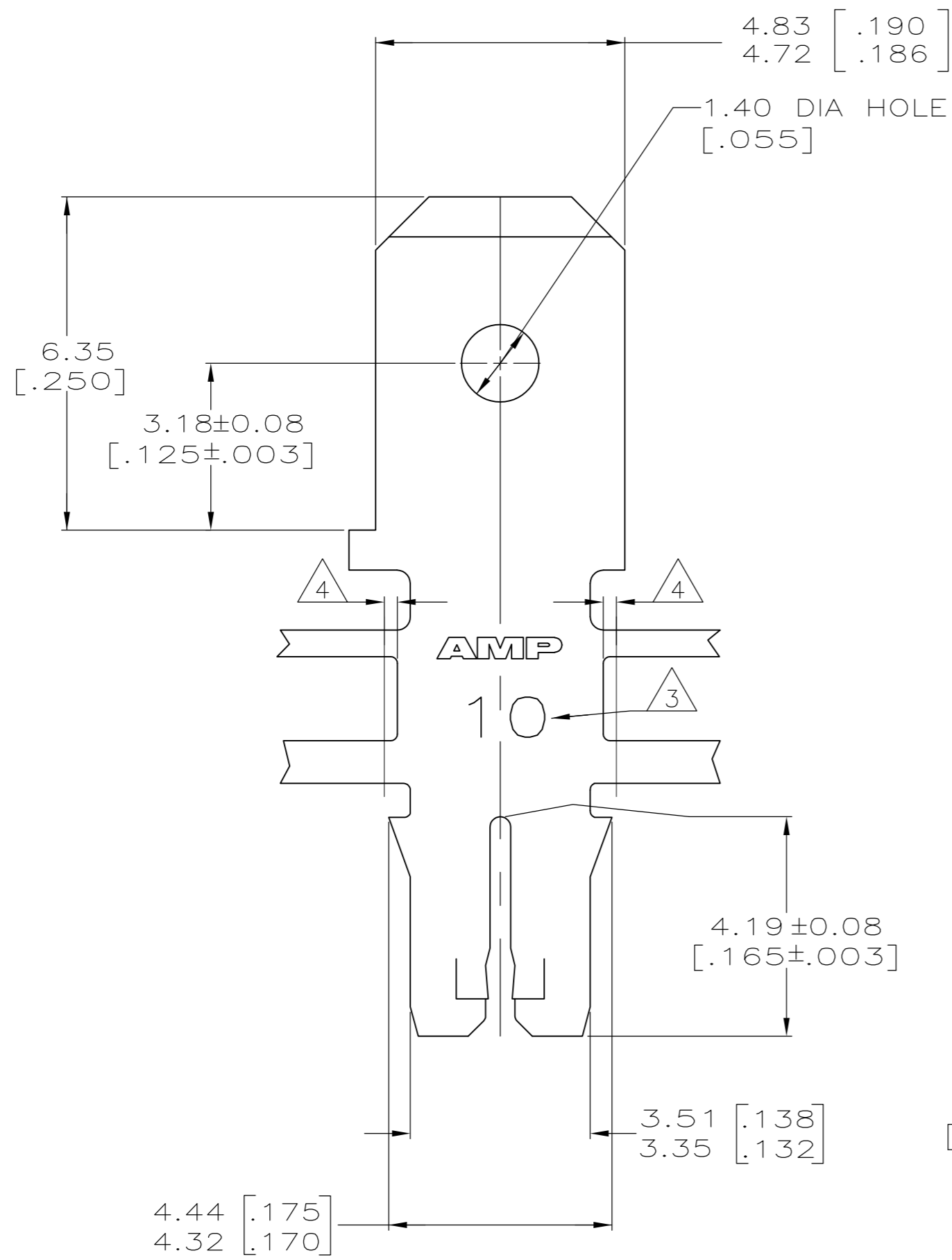


THIS DRAWING IS UNPUBLISHED. RELEASED FOR PUBLICATION  
 © COPYRIGHT - By TYCO ELECTRONICS CORPORATION. ALL RIGHTS RESERVED.

REVISIONS				
P	LTR	DESCRIPTION	DATE	APVD
A3		REVISED PER ECR-17-008225	08JUN2017	NK VS

- 1 CONTINUOUS STRIP ON REELS WITH TERMINALS LOCATED ON 6.86±0.08 [.270±.003] CENTERS
- 2 SLOT ACCEPTS DIA 0.375-0.60mm [#26<sup>1</sup>-#22<sup>1</sup>] AWG COPPER MAGNET WIRE. TWO WIRES OF THE SAME SIZE MAX PER SLOT
- 3 IDENTIFICATION NUMBER 10 FOR THE MAGNET WIRE SLOT SIZE
- 4 0.25[.010] MAX CARRIER CUT-OFF TABS



2232781-1  
PART NUMBER

THIS DRAWING IS A CONTROLLED DOCUMENT.		DWN GARY ZHANG 18FEB2014	<b>STE</b> TE Connectivity	
DIMENSIONS: mm [INCHES]		CHK JAIN LIU 18FEB2014		
TOLERANCES UNLESS OTHERWISE SPECIFIED:		APVD MAO YUHONG 18FEB2014	NAME	
0 PLC ± -		PRODUCT SPEC	TAB, 4.75[.187] FASTON,™	
1 PLC ± -		108-1484	MAG-MATE™ Slim Line	
2 PLC ± 0.13[.005]		APPLICATION SPEC	SIZE	CAGE CODE
3 PLC ± -		114-2140	A2	00779
4 PLC ± -		WEIGHT 0	DRAWING NO	
ANGLES ± -		CUSTOMER DRAWING	C=2232781	
FINISH TIN PLATE		SCALE 10:1	SHEET 1 of 1	REV A3