

4

3

2

1

THIS DRAWING IS UNPUBLISHED. RELEASED FOR PUBLICATION 2017
 © COPYRIGHT 2017 TE Connectivity Germany GmbH ALL RIGHTS RESERVED.

VERSION I

A-A

10±0.2

1:1

OBSOLETE

VERSION II

A-A

1:1

REVISIONS					
P	LTR	DESCRIPTION	DATE	DWN	APVD
1		NEW DRAWING	06MAY2011	TS	HV
2		Drawing reworked.	26JUL2012	JTO	DHV
A		Add 0-2177061-1 at drawing. Rework drawing.	10OCT2013	JTO	DHV
B		Sheet 2. obsolete	14JUN2016	W.SA	DHV
C		ADDED VERSION II	09MAY2017	CR	DHV
D		0-2177061-1 MADE OBSOLETE	05NOV2018	AHM	DHV

NOTES:

Bemerkungen:

- ONLY THE GERMAN LANGUAGE IS AUTHORITATIVE
Massgebend ist der deutsche Text
- PACKAGING: BULK PACKAGING IN SHIPPING BOX
Verpackung: Schuettgut in Versandkarton

NOTE Bem.	FEATURE Merkmal
3	PRODUCT-SPEC. 108-94297 Produkt-Spez.
4	APPLICATION-SPEC. 114-94130 Verarbeitungs-Spez.

0-2177061-2	SHIELD CRIMP FERRULE Untercrimphuelse	STAINLESS STEEL 1.4301 Edelstahl 1.4301	2.2	BLANK blank	SERIEL-TOOL Serien-Werkzeug	II
0-2177061-1	SHIELD CRIMP FERRULE Untercrimphuelse	STAINLESS STEEL 1.4301 Edelstahl 1.4301	2.2	BLANK blank	SERIEL-TOOL Serien-Werkzeug	I
TE-ORDER-NO. TE-Bestell-Nr.	DESCRIPTION Benennung	MATERIAL	WEIGHT (G) Gewicht [g]	SURFACE Oberflaeche	TOOL	VERS.

THIS DRAWING IS A CONTROLLED DOCUMENT.

DWN T.Salman 06MAY2011

CHK U.Hoepfner 09MAY2011

APVD D.H.Vu 09MAY2011

PRODUCT SPEC

APPLICATION SPEC

WEIGHT

SEE TABLE A2

CUSTOMER DRAWING

STE TE Connectivity

NAME SHIELD CRIMP FERRULE
Untercrimphuelse

SIZE CAGE CODE DRAWING NO. RESTRICTED TO

A2100779 C-2177061

SCALE 5:1 SHEET 1 OF 2 REV D

DIMENSIONS: mm

TOLERANCES UNLESS OTHERWISE SPECIFIED:

	DIN ISO	
0 PLC	±	2768
1 PLC	±	- mk
2 PLC	±	
3 PLC	±	
4 PLC	±	
ANGLES	±°	
FINISH		

MATERIAL

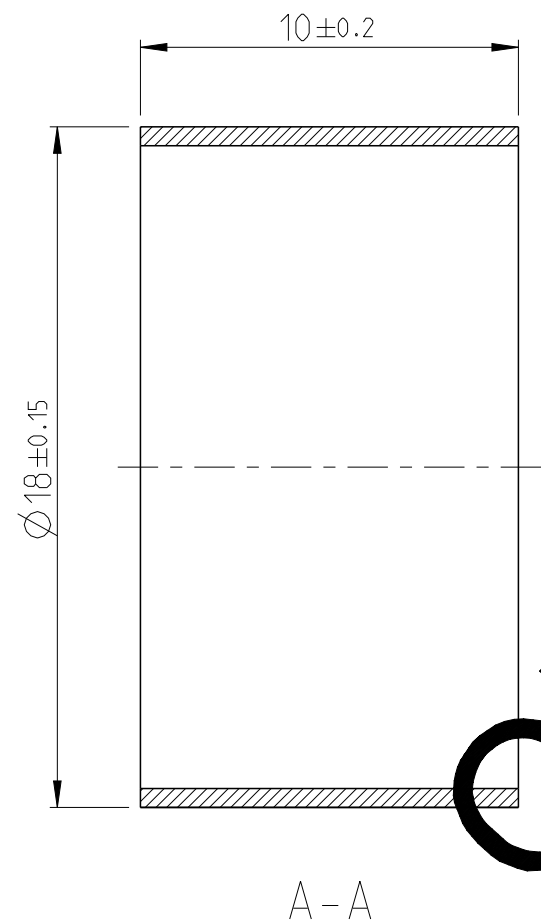
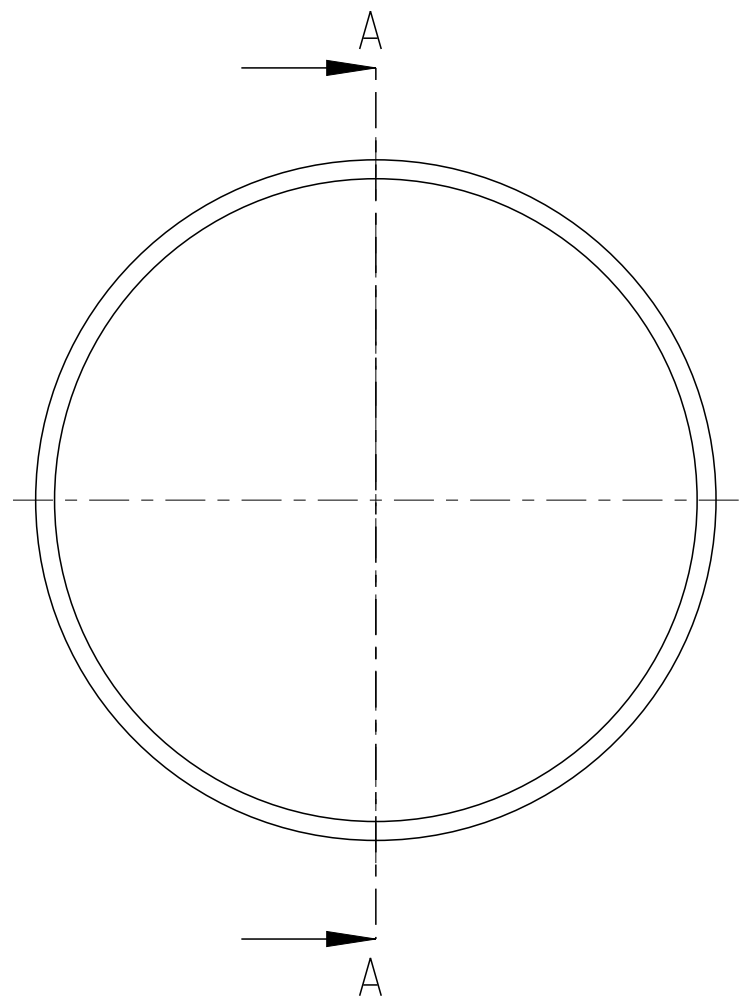
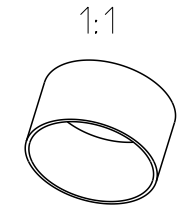
FINISH

1471-9 (3/13)

THIS DRAWING IS UNPUBLISHED. RELEASED FOR PUBLICATION 2011
 © COPYRIGHT 2011 Tyco Electronics AMP GmbH ALL RIGHTS RESERVED.

LOC	DIST	REVISIONS			
P	LTR	DESCRIPTION	DATE	DWN	APVD
AI	-	SEE SHEET 1	-	-	-

9-2177061-1	SHIELD CRIMP FERRULE Untercrimphuelse	STAINLESS STEEL 1.4301 Edelstahl 1.4301	2.2	BLANK blank	LOW-VOLUME-TOOL Kleinserien-Werkzeug
TE-ORDER-NO. TE-Bestell-Nr.	DESCRIPTION Benennung	MATERIAL	WEIGHT [G] Gewicht [g]	SURFACE Oberflaeche	TOOL



OBSOLETE!

- NOTES:
Bemerkungen:
- ONLY THE GERMAN LANGUAGE IS AUTHORITATIVE
Maßgebend ist der deutsche Text
 - PACKAGING: BULK PACKAGING IN SHIPPING BOX
Verpackung: Schuettgut in Versandkarton

NOTE Bem.	FEATURE Merkmal
3	PRODUCT-SPEC. 108-94297 Produkt-Spez.
4	APPLICATION-SPEC. 114-94130 Verarbeitungs-Spez.

9- -1 AS SHOWN
wie gezeichnet

THIS DRAWING IS A CONTROLLED DOCUMENT.		DWN T.Salman 06MAY2011	TE Connectivity		
DIMENSIONS: mm		CHK U.Hoepfner 09MAY2011			
TOLERANCES UNLESS OTHERWISE SPECIFIED:		APVD D.H.Vu 09MAY2011			
0 PLC ± DIN ISO 1 PLC ± 2768 2 PLC ± - mK 3 PLC ± 4 PLC ± ANGLES ± FINISH SEE TABLE		PRODUCT SPEC -	NAME SHIELD CRIMP FERRULE Untercrimphuelse		
MATERIAL SEE TABLE		APPLICATION SPEC -	SIZE A3	CAGE CODE 00779	DRAWING NO C=2177061
		WEIGHT SEE TABL	RESTRICTED TO -		
		Customer Drawing	SCALE 5:1	SHEET 2	OF 2
			REV D		